



REPUBLIKA E SHQIPERISE
MINISTRIA E FINANCAVE
DREJTORIA E PERGJITHSHME E MENAXHIMIT TE BORXHIT PUBLIK



MINISTRIA E FINANCAVE

Treguesit e Borxhit – 9/Mujori 2011

Debt Indicators as of Sept 30, 2011

**Stoku i Borxhit Publik
Public Debt Stock**

million ALL

	2009	2010	30.09.2011	
Borxhi Publik	682,517	715,493	768,955	Public Debt Stock
- Borxhi i Qeverise Qendrore	682,517	715,346	768,752	Central Government Debt Stock
- Borxhi i pushtetit lokal	-	147	203	Local Government Debt Stock

**Borxhi i Qeverise Qendrore
Central Government Debt Stock**

million ALL

	2009	2010	30.09.2011	
Borxhi i Qeverise Qendrore, nga i cili:	682,517.0	715,345.7	768,752.0	Central Government Debt Stock, of which:
-Borxhi i brendshem	415,028.0	407,371.7	437,653.0	-Domestic Debt
-Borxhi i jashtem*	267,489.0	307,974.0	331,099.0	-Foreign Debt

*) Te dhenat per gjendjen me 30.09.2011 jane paraprake

*) Preliminary data for Sep. 30, 2011

**Borxhi i Qeverise Qendrore
Central Government Debt Stock**

million ALL

	2009	2010	30.09.2011	
Borxhi i Qeverise Qendrore, nga i cili:	45,775	45,425	768,752	Central Government Debt Stock, of which:
-Borxhi i Qeverise	0	0	722,330	-Central Government Debt
-Borxhi i garantuar nga Qeveria	45,775	45,425	46,422	-Central Government Guaranteed Debt

*) Te dhenat per gjendjen me 30.09.2011 jane paraprake

*) Preliminary data for Sep. 30, 2011

Borxhi i Qeverise Qendrore
Gross Central Government Debt position

ALL million

	2010Q4	2011Q1	2011Q2	2011Q3	
Gross Central Government Debt					Gross Central Government Debt
Sipas maturimit dhe Instrumentave	669,924	689,828	706,314	722,333	By maturity and type of instrument:
Afatshkurter sipas maturimit origjinal	231,436	241,356	247,393	242,451	Short-term by original maturity
Letra me Vlere te Borxhit	231,436	241,356	247,393	242,451	Debt securities
Kredi					Loans
Afatgjate sipas maturimit origjinal	438,488	448,472	458,921	479,882	Long-term, by original maturity:
Me shlyerje brenda nje viti	38,082	49,504	44,790	47,187	With payment due in one year or less:
Letra me Vlere te Borxhit	37,407	48,867	44,060	46,560	Debt securities
Kredi	675	637	730	627	Loans
Me shlyerje mbi nje vit	400,406	398,968	414,130	432,695	With payment due in more than one year:
Letra me Vlere te Borxhit	174,609	171,992	181,672	185,288	Debt securities
Kredi	225,797	226,976	232,458	247,407	Loans
Borxhi gjithsej	669,924	689,828	706,314	722,333	Total gross debt
Letra me Vlere te Borxhit	443,452	462,215	473,125	474,299	Debt securities
Kredi	226,472	227,613	233,189	248,034	Loans
Sipas Monedhes se emetimit					By currency of denomination:
Monedhe Kombetare	398,504	417,697	428,341	429,661	Domestic currency
Monedhe e Huaj	271,420	272,131	277,973	292,672	Foreign currency
Sipas rezidences se kreditoreve					By residence of the creditor:
Kreditore vendas	402,490	421,571	432,251	433,550	Domestic creditors
Kreditore te huaj	267,434	268,258	274,063	288,783	External creditors
Memorandum item:					
Borxhi Brendshem i garantuar	5,551	5,623	5,656	5,638	Domestic Guaranteed Debt
Borxhi Jashtem i garantuar	39,874	39,764	39,768	40,784	External Guaranteed Debt
Borxhi i garantuar Gjithsej	45,425	45,387	45,424	46,422	Total Guaranteed Debt

Domestic Debt Stock by Instruments

million ALL

	31.12.2009		31.12.2010		31.03.2011		30.06.2011		30.09.2011		
	Purchase value	%	Purchase value	%	Purchase value	%	Purchase value	%	Purchase value	%	
Stoku I Borxhit Gjithsej	415,028		407,372		425,667		436,358		437,652		Total Debt Stock
I.Borxhi Shteteror	409,501	98.67	401,821	98.64	420,044	98.68	430,702	98.70	432,014	98.71	I.Public Debt
1.Instrumenta afatshkurter	237,469	57.22	231,436	56.81	241,356	56.70	247,393	56.69	242,451	55.40	I.Short term Instruments
Bono 3/M	22,870	5.51	11,495	2.82	12,168	2.86	11,841	2.71	11,834	2.70	3 Month Bills
Bono 6/M	47,647	11.48	44,188	10.85	47,954	11.27	47,886	10.97	43,135	9.86	6 Month Bills
Bono 9/M			3,317	0.83	2,347	0.56	2,360	0.55	2,353	0.54	9 Month Bills
Bono 12/M	166,952	40.23	172,436	42.33	178,887	42.03	185,306	42.47	185,129	42.30	1 Year Bills
2.Instrumenta afatgjate	153,162	36.90	170,385	41.83	178,688	41.98	183,309	42.01	189,564	43.31	II. Long term Instruments
Oblig.2/Vj	65,247	15.72	70,957	17.42	71,507	16.80	73,500	16.84	76,300	17.43	2 Year Note
Oblig.3/Vj	15,600	3.76	15,613	3.83	17,913	4.21	17,637	4.04	19,387	4.43	3 Year Note
Oblig.5/Vj	60,315	14.53	71,815	17.63	77,268	18.15	80,172	18.37	81,877	18.71	5 Year Note
Oblig.7/Vj	12,000	2.89	12,000	2.95	12,000	2.82	12,000	2.75	12,000	2.74	7 Year Note
3. Kredi Direkte		0.00		0.00		0.00		0.00		0.00	Central Bank Credits
4.Rivleresimi Valutes	18,870	4.55	0	0.00	0	0.00	0	0.00	0	0.00	Forgn.Ex.Res.Evalu.
II.Borxhi i Garantuar	5,527	1.33	5,551	1.36	5,623	1.32	5,656	1.30	5,638	1.29	II.Publicly Guaranteed Debt
1. Garanci Treg.Brend.	5,527	1.33	5,551	1.36	5,623	1.32	5,656	1.30	5,638	1.29	Domestic Guarantees

Struktura e Borxhit te Brendshem Shteteror *
Structure of Central Government Domestic Debt

milion ALL

	2009		2010		3/M I-re 2011		6/M I-re 2011		9/M 2011		
	million ALL	%	million ALL	%	million ALL	%	million ALL	%	million ALL	%	
- Sipas Instrumentave	390,631		401,821		420,044		430,702		432,014		- By instruments
Instrumenta afatshkurter	237,469	60.79%	231,436	57.60%	241,356	57.46%	247,393	57.44%	242,451	56.12%	short tern
Instrumenta afatgjate	153,162	39.21%	170,385	42.40%	178,688	42.54%	183,309	42.56%	189,564	43.88%	long term
-Sipas monedhes	390,631		401,821		420,044		430,702		432,014		- By currency
- Monedhe kombetare	390,631	100.00%	398,352	99.14%	417,697	99.44%	428,341	99.45%	429,661	99.46%	domestic currency
- Monedhe huaj	0	0.00%	3,469	0.86%	2,347	0.56%	2,361	0.55%	2,353	0.54%	foreign currency
- Sipas rezidences se kreditorit	390,631		401,821		420,044		430,702		432,014		- By creditor's residence
- rezidente	388,456	99.44%	397,911	99.03%	416,932	99.26%	427,584	99.28%	428,899	99.28%	residents
- jo rezidente	2,175	0.56%	3,910	0.97%	3,112	0.74%	3,118	0.72%	3,115	0.72%	non residents

* Nuk perfshihet rivleresimi i valutes dhe garancite e brendshme

* Forgn.Ex.Res.Evalu. and domestic guaranties are not includet

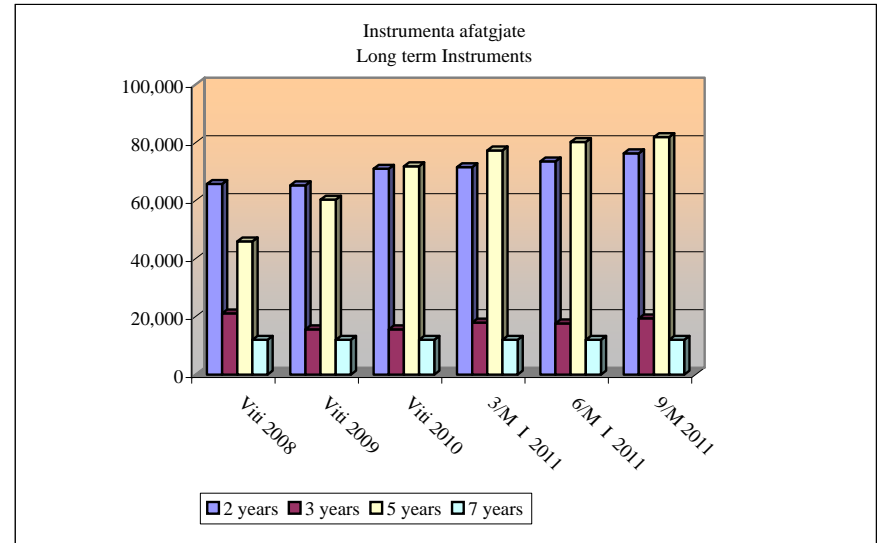
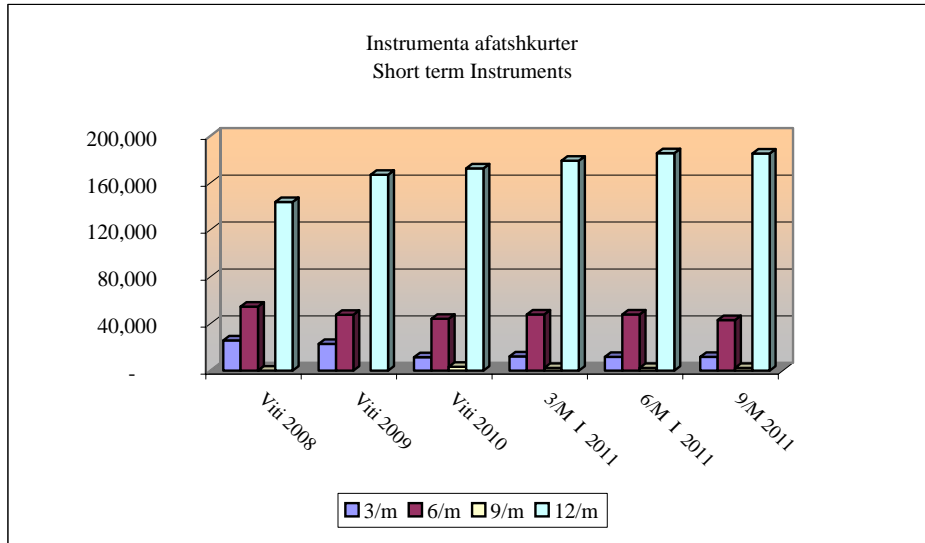
Financimi i brendshem i Deficitit Buxhetor 9/M 2011
Domestic Deficit Financing as of Sept 30, 2011

mije leke

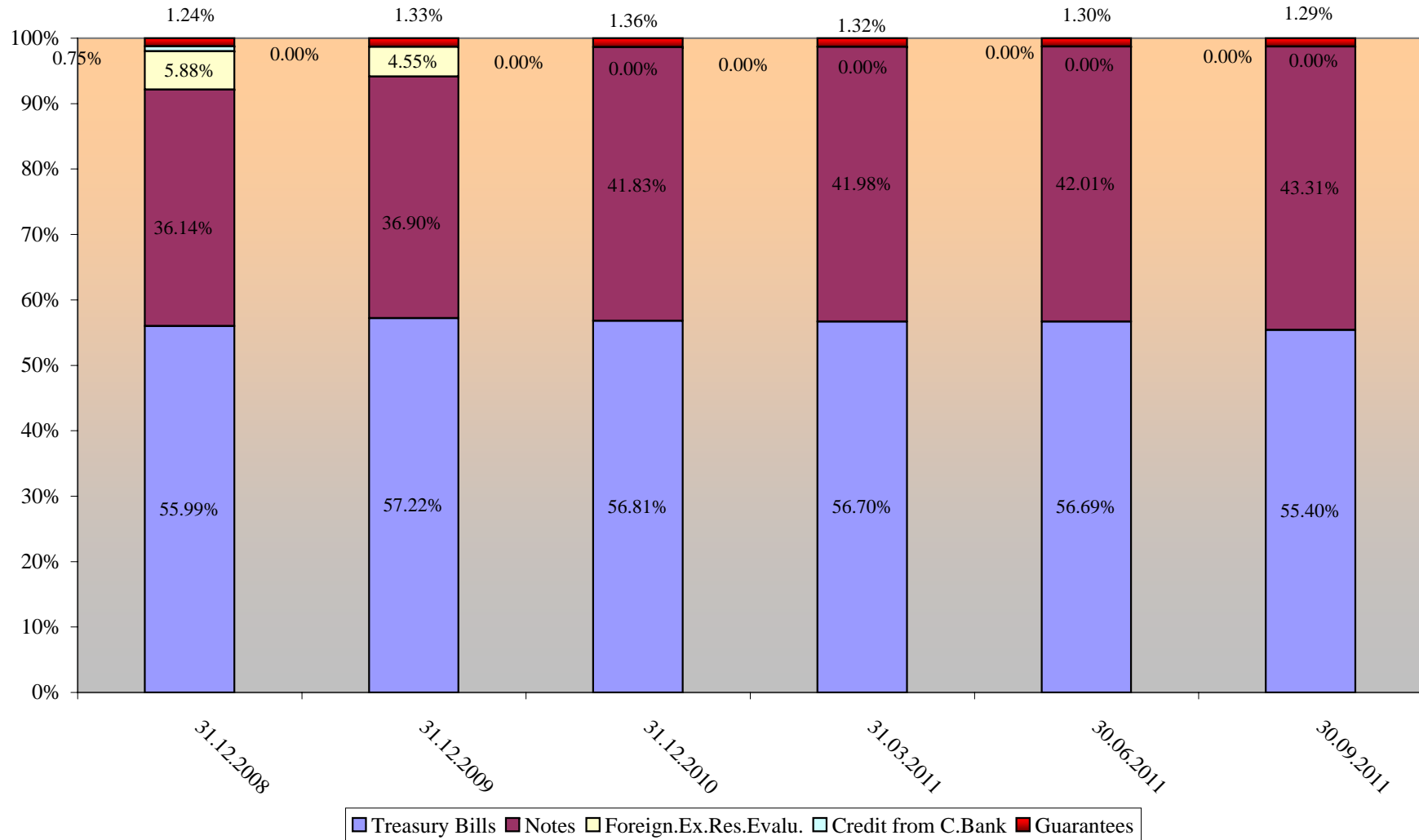
000'ALL

Periudha	9/m	
Financimi i Deficitit	30,145,557	Deficit financing
Nga i cili:		of which :
Instrumenta Afatshkurter	10,967,024	Short term instruments
- Bono Thesari Leke	11,978,712	Tbills (leke)
- Bono Thesari Euro	-1,011,688	Tbills (EURO)
- Kredi Direkte	0	Credit from BOA
Instrumenta Afatgjate	19,178,533	Long term instruments
- Oblig.e qeverise 2 vjecare	5,343,000	2 y bonds
- Oblig.e qeverise 3 vjecare	3,773,600	3 y bonds
- Oblig.e qeverise 5 vjecare	10,061,933	5 y bonds
- Oblig.e qeverise 7 vjecare	0	7 y bonds
GDP	1,326,057,000	GDP
Financimi i Deficitit / GDP	2.27%	Deficit financing / GDP
Instrumenta Afatshkurter / GDP	0.83%	Short term instruments / GDP
Instrumenta Afatgjate / GDP	1.45%	Long term instruments / GDP

Ecuria e instrumentave te borxhit te brendshem
Evolution of Domestic Debt Instruments

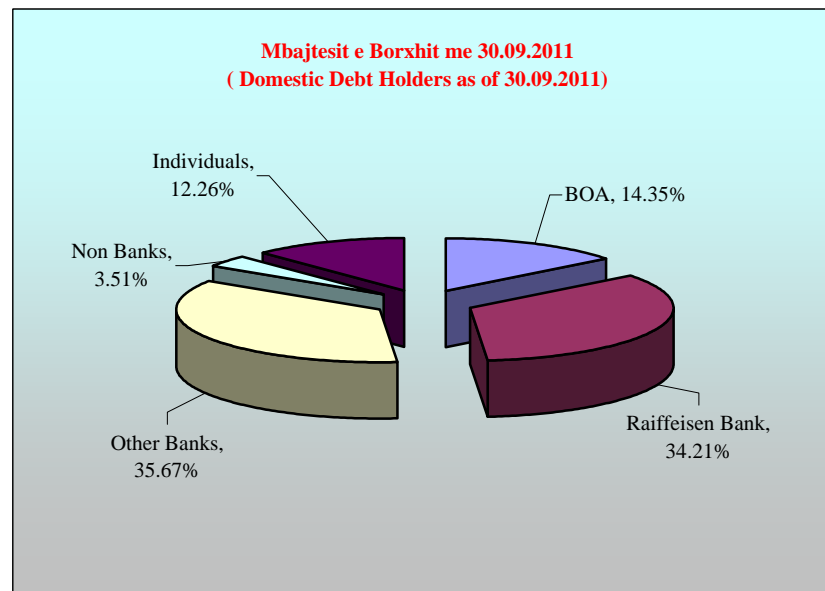
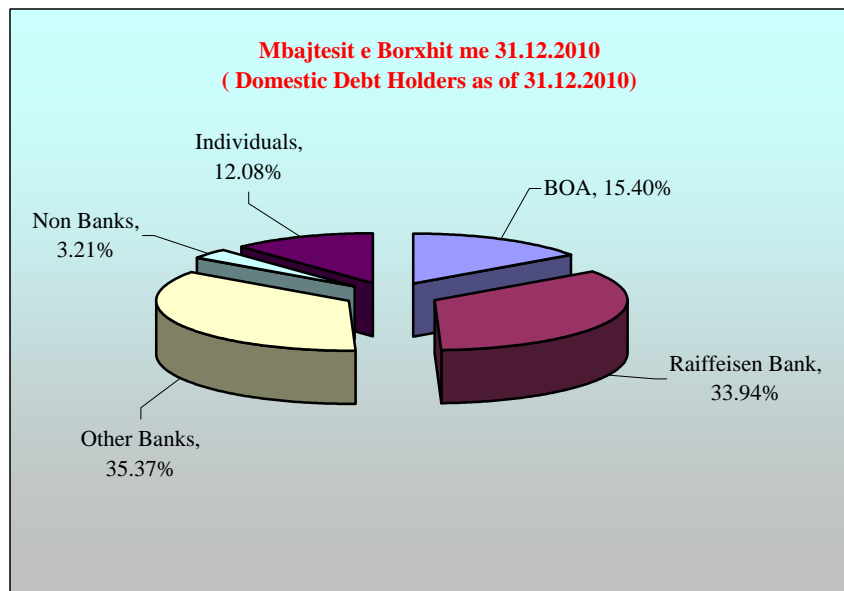


Stoku i Borxhit te Brendshem sipas instrumentave
Domestic Debt Stock by Instruments



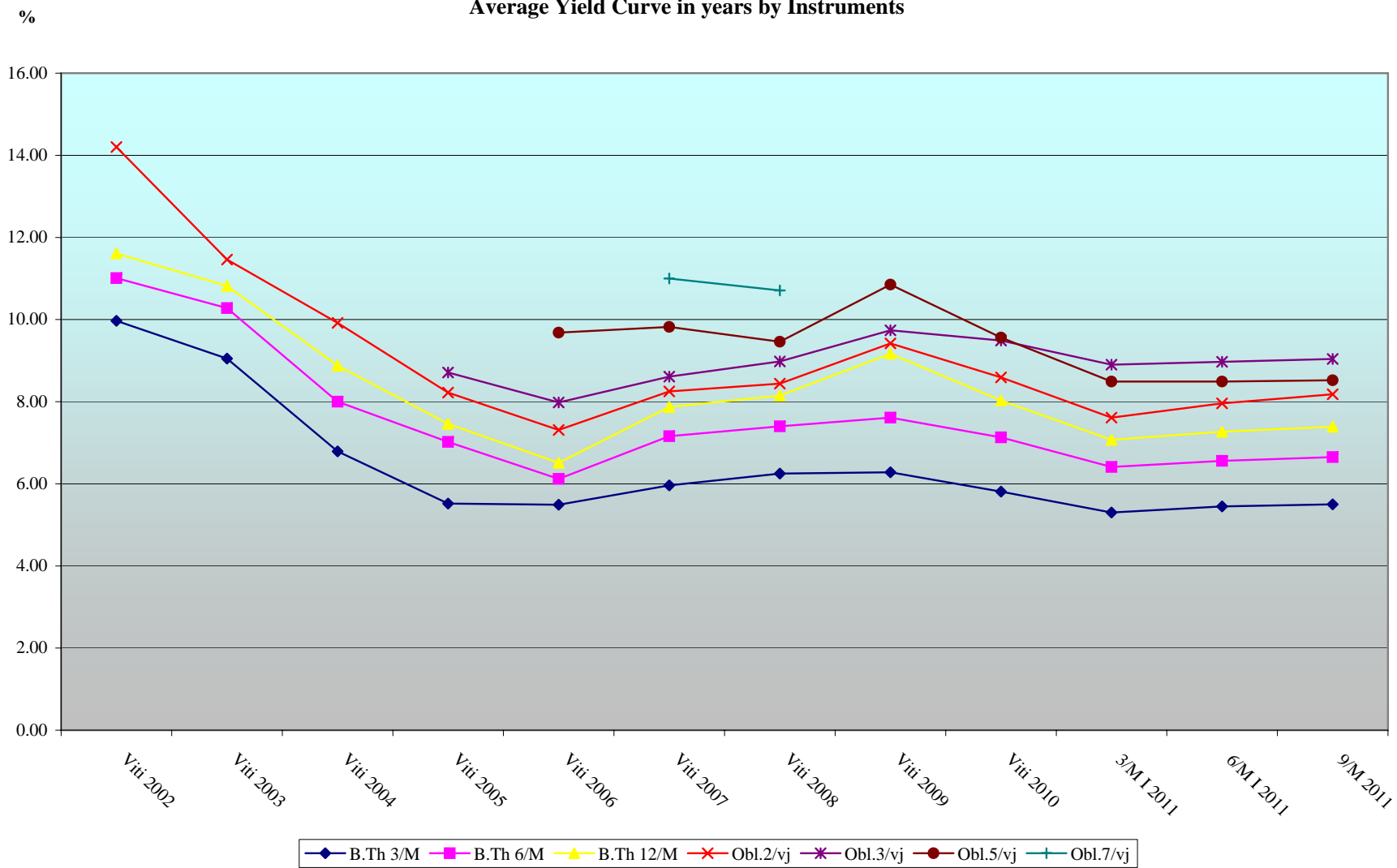
Mbajtesit e Borxhit te Brendshem * ne Çmim Blerje
Domestic Debt Holders * in Purchase Value

	31.12.2008	31.12.2009	31.12.2010	31.03.2011	30.06.2011	30.09.2011	
BOA	17.75%	17.66%	15.40%	14.78%	14.41%	14.35%	BOA
Raiffeisen Bank	36.88%	34.57%	33.94%	33.71%	33.93%	34.21%	Banka Raiffeisen
Other Banks	34.58%	34.33%	35.37%	36.52%	36.54%	35.67%	Bankat e tjera
Non Banks	2.46%	2.68%	3.21%	3.28%	3.36%	3.51%	Jo Banka
Individuals	8.33%	10.76%	12.08%	11.71%	11.76%	12.26%	Individet

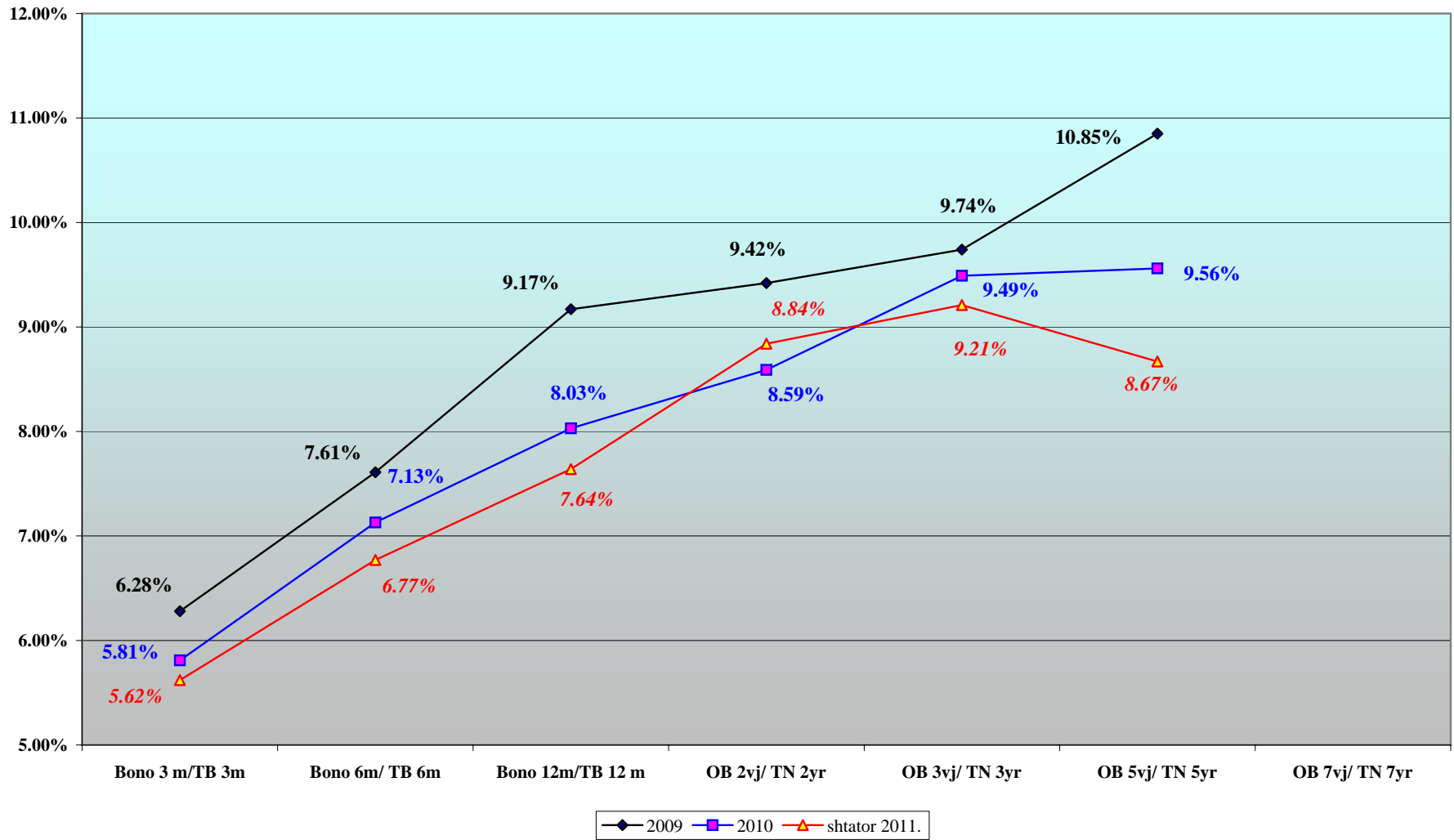


***) Nuk perfshihen Rivlresimi i valutes dhe Garancite.**
Foreing exchange reserves reevaluation and Guarantees are not included

Interesi mes. ponderuar i Letrave me vlere ne vite sipas Instrumentave
Average Yield Curve in years by Instruments



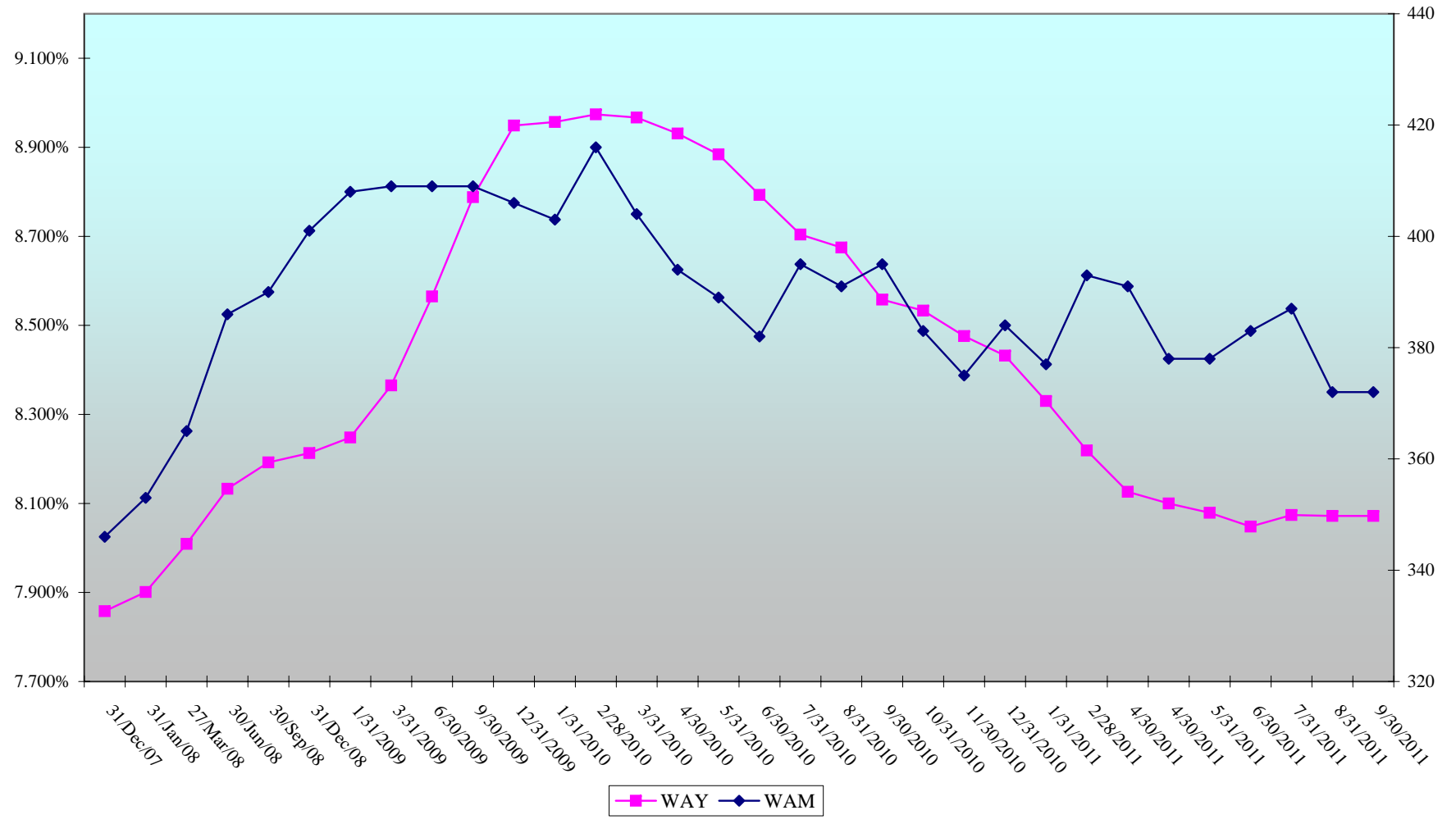
**Kurba e Yield-it te Letrave me Vlere
Yield Curve Of Albanian Securities**



Letrat me vlere te Qeverise
Yield Mesatar & Dite Mesatare ne maturim
Albanian Government Securities
Weighted Average Yield & Weighted Average Maturity

Yield

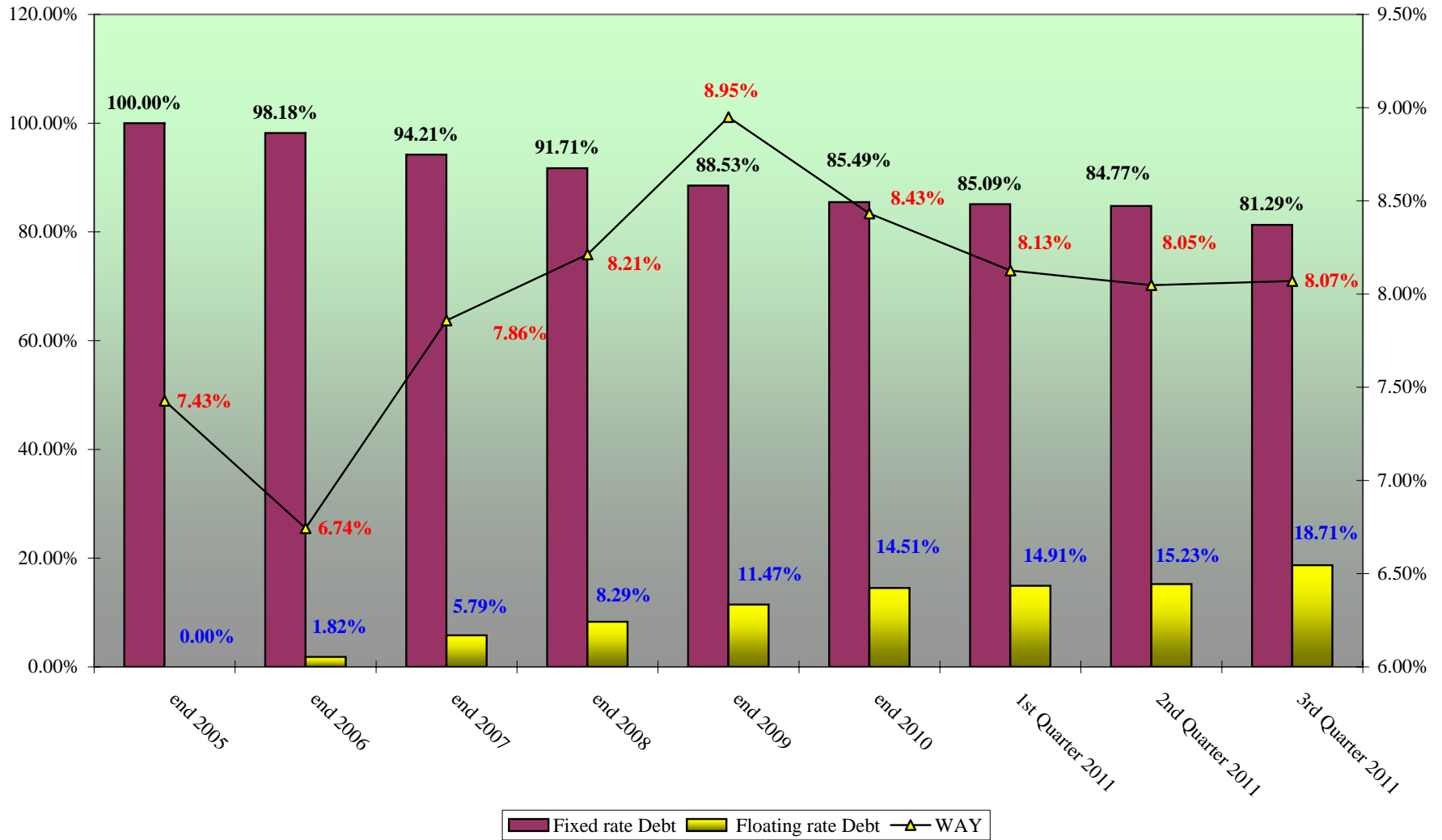
Days



Dite Mesatare ne Maturim & Yield-i Mesatar i Ponderuar
Weighted Average Maturity & Weighted Average Yield

	Average Maturity	Average Yield	Averg. Mat Pa BOA	Averg Yield Pa BOA
31.12.2005	195	7.427	223	7.589
31.12.2006	242	6.744	284	6.807
31.12.2007	346	7.858	409	8.070
31.12.2008	401	8.213	470	8.461
31.01.2009	408	8.248	475	8.507
29.02.2009	414	8.304	485	8.572
31.03.2009	409	8.365	485	8.647
30.04.2009	408	8.422	482	8.702
31.05.2009	416	8.511	492	8.791
30.06.2009	409	8.565	486	8.844
31.07.2009	419	8.656	494	8.950
31.08.2009	419	8.727	492	9.000
30.09.2009	409	8.788	481	9.068
31.10.2009	402	8.844	471	9.129
30.11.2009	406	8.922	475	9.207
31.12.2009	406	8.949	471	9.236
31.01.2010	403	8.957	465	9.255
28.02.2010	416	8.974	484	9.289
31.03.2010	404	8.967	472	9.286
30.04.2010	394	8.931	460	9.263
31.05.2010	389	8.884	456	9.218
30.06.2010	382	8.793	445	9.120
31.07.2010	395	8.704	456	9.030
31.08.2010	391	8.675	455	8.998
30.09.2010	395	8.558	460	8.878
31.10.2010	383	8.533	448	8.857
30.11.2010	375	8.476	442	8.797
31.12.2010	384	8.432	438	8.705
31.01.2011	377	8.33	425	8.603
28.02.2011	393	8.219	442	8.497
31.03.2011	391	8.126	438	8.397
30.04.2011	378	8.100	424	8.368
31.05.2011	378	8.079	425	8.339
30.06.2011	383	8.048	429	8.293
31.07.2011	387	8.074	432	8.304
31.08.2011	372	8.072	416	8.297
30.09.2011	372	8.072	417	8.296

Ecuria e Struktures se Borxhit te Brendshem & Yield-I Mesatar i Ponderuar
Evolution of Domestic Debt Structure and Weighted Average Yield



**BORXHI I JASHEM* AFATGJATE I SHQIPERISE
TE DHENA PERMBLEDHESE**

**LONG-TERM EXTERNAL PUBLIC DEBT*
SUMMARIZED DATA**

(in million EUR)

Klasifikimi	Deri ne 31.12.2006	2007	2008	2009	2010	2011	GJITHSEJ TOTAL	Classification
	Up to 31.12.2006					Q3		
I. TE DHENA KUMULATIVE								
Borxhi Neto	1,176.69	1,210.27	1,577.79	1,938.89	2,219.31	2,349.05	2,349.05	I. CUMULATIVE DATA (STOCK)
Terheqjet	1,554.35	1,679.45	2,058.64	2,454.48	2,927.37	3,091.56	3,091.56	Debt Outstanding Disbursed (DOD)
Pagesat e Borxhit	394.72	458.43	534.41	641.41	950.40	1,016.93	1,016.93	Drawings
-Principal	201.22	241.89	287.49	344.58	603.52	647.13	647.13	Debt Service
-Interes	193.50	216.54	246.92	296.83	346.88	369.80	369.80	-Principal
Borxhi i nenshkruar i paterhequr	439.26	667.17	783.75	717.29	764.64	895.98	895.98	-Interest
II. TE DHENA VJETORE								
Terheqjet	1,554.35	125.09	379.19	395.84	472.89	164.19	3,091.56	Committed Undisbursed Balance (CUB)
Pagesat e Borxhit	394.72	63.71	75.98	107.00	309.00	66.53	1,016.93	II. ANNUAL DATA (FLOWS)
-Principal	201.22	40.67	45.60	57.09	258.95	43.61	647.13	Drawings
-Interes	193.50	23.04	30.38	49.91	50.05	22.92	369.80	Debt Service

*) Përfshin borxhin shtetëror dhe shtetëror të garantuar (Tabela I.1 + Tabela I.2)

**) Përfshihen të dhënat për periudhën 1991-2006

**) Deri më 30.09.2011, të dhëna paraprake

Ne këto Tabela nuk përfshihet kredia e FMN-se

*) Includes Central Government and Central Government Guaranteed debt (Table I.1 + Table I.2)

**) Cumulative data (1991-2006)

**) As of September. 30, 2011, data are preliminary

IMF credit is not included

**BORXHI I JASHEM I QEVERISE QENDRORE
TE DHENA PERMBLEDHESE**

**CENTRAL GOVERNMENT EXTERNAL DEBT
SUMMARIZED DATA**

(in million EUR)

Klasifikimi	Deri ne 31.12.2006 Up to 31.12.2006	2007	2008	2009	2010	2011	GJITHSEJ TOTAL	Classification
						Q3		
I. TE DHENA KUMULATIVE								I. CUMULATIVE DATA (STOCK)
Borxhi Neto	969.29	985.26	1,322.58	1,647.16	1,931.97	2,059.70	2,059.70	Debt Outstanding Disbursed (DOD)
Terheqjet	1,307.43	1,397.88	1,741.67	2,085.41	2,546.54	2,696.70	2,696.70	Drawings
<u>Pagesat e Borxhit</u>	<u>336.34</u>	<u>384.85</u>	<u>441.95</u>	<u>525.99</u>	<u>808.49</u>	<u>857.92</u>	<u>857.92</u>	Debt Service
-Principal	168.56	200.56	234.72	276.77	516.07	547.49	547.49	-Principal
-Interes	167.78	184.30	207.24	249.23	292.43	310.44	310.44	-Interest
Borxhi i nenshkuar i paterhequr	286.37	533.21	671.22	656.96	716.07	861.55	861.55	Committed Undisbursed Balance (CUB)
II. TE DHENA VJETORE								II. ANNUAL DATA (FLOWS)
Terheqjet	1,307.43	90.45	343.79	343.74	461.13	150.16	2,696.70	Drawings
<u>Pagesat e Borxhit</u>	<u>336.34</u>	<u>48.51</u>	<u>57.10</u>	<u>84.04</u>	<u>282.50</u>	<u>49.43</u>	<u>857.92</u>	Debt Service
-Principal	168.56	32.00	34.16	42.05	239.30	31.42	547.49	-Principal
-Interes	167.78	16.51	22.94	41.99	43.20	18.01	310.44	-Interest

*) Përfshihen të dhënat për periudhën 1991-2006

***) Deri më 30.09.2011, të dhëna paraprake

Ne këto tabela nuk përfshihen kredia e FMN-se

*) Cumulative data (1991-2006)

***) As of September 30, 2011, data are preliminary

IMF credit is not included

**BORXHI I JASHEM I GARANTUAR NGA QEVERIA QENDRORE
TE DHENA PERMBLEDHESE**

**CENTRAL GOVERNMENT GUARANTEED DEBT
SUMMARIZED DATA**

(in million EUR)

Klasifikimi	Deri ne 31.12.2006 Up to 31.12.2006	2007	2008	2009	2010	2011	GJITHSEJ TOTAL	Classification
						Q3		
I. TE DHENA KUMULATIVE								
Borxhi Neto	207.40	225.01	255.21	291.74	287.34	289.35	289.35	I. CUMULATIVE DATA (STOCK)
Terheqjet	246.93	281.57	316.97	369.07	380.83	394.86	394.86	Debt Outstanding Disbursed (DOD)
Pagesat e Borxhit	58.38	73.58	92.45	115.41	141.91	159.01	159.01	Drawings
-Principal	32.66	41.33	52.77	67.81	87.45	99.64	99.64	Debt Service
-Interes	25.72	32.24	39.68	47.60	54.45	59.36	59.36	
Borxhi i nenshkruar i paterhequr	152.90	133.97	112.53	60.22	48.45	34.43	34.43	Committed Undisbursed Balance (CUB)
II. TE DHENA VJETORE								
Terheqjet	246.93	34.64	35.40	52.10	11.76	14.03	394.86	II. ANNUAL DATA (FLOWS)
Pagesat e Borxhit	58.38	15.19	18.88	22.96	26.50	17.10	159.01	Drawings
-Principal	32.66	8.67	11.44	15.04	19.65	12.19	99.64	Debt Service
-Interes	25.72	6.52	7.44	7.92	6.85	4.91	59.36	

*) Përfshihen të dhënat për periudhën 1991-2006

***) Deri më 30.09.2011, të dhëna paraprake

*) Cumulative data (1991-2006)

***) As of September 30, 2011, data are preliminary

BORXHI I JASHEM* AFATGJATE I SHQIPERISE
TERHEQJET NE VITE NGA KREDITE E HUAJA SIPAS KREDITOREVE
LONG-TERM EXTERNAL PUBLIC DEBT*
DRAWINGS BY YEARS AND BY CREDITORS

(in million EUR)

Sipas kreditoreve	Deri ne 31.12.2006 Up to 31.12.2006	2007	2008	2009	2010	2011			TOTALI	By Creditors
						Q1	Q2	Q3		
-Shumepalesh (I)	910.80	99.14	112.97	136.80	111.21	21.85	37.41	61.30	1,491.47	-Multilateral (I)
CEB	9.98	8.40	15.41	21.83	21.30	11.50	-	5.64	94.06	CEB
IBRD	-	3.85	8.08	4.94	2.32	0.18	1.71	18.86	39.94	IBRD
EC	9.00	-	-	-	-	-	-	-	9.00	EC
EBRD	80.96	14.67	24.93	32.24	14.38	2.99	12.15	11.89	194.19	EBRD
EIB	99.37	30.95	31.76	28.19	27.28	-	12.96	16.68	247.20	EIB
IDA	625.05	35.02	18.53	25.02	19.61	5.38	8.13	2.23	738.97	IDA
IDB	34.07	4.94	9.45	14.80	13.39	0.69	1.14	4.39	82.87	IDB
IFAD	29.73	0.73	1.51	1.41	2.17	0.19	0.51	0.22	36.47	IFAD
OPEC	22.64	0.58	3.30	8.36	10.76	0.93	0.81	1.39	48.77	OPEC
-Dypalesh (II)	552.07	25.95	36.22	66.44	63.20	9.82	22.98	10.83	787.52	-Bilateral (II)
AUSTRIA	4.51	-	-	5.03	2.46	0.89	2.94	0.84	16.66	AUSTRIA
BULLGARI	0.08	-	-	-	-	-	-	-	0.08	BULGARIA
ÇEKI	8.49	-	-	-	-	-	-	-	8.49	CZECH REP.
GREQI	49.35	-	-	-	-	-	-	-	49.35	GREECE
GJERMANI	112.22	13.53	10.74	24.79	15.04	2.81	7.41	3.87	190.41	GERMANY
HUNGARI	11.92	-	-	-	-	-	-	-	11.92	HUNGARY
ITALI	134.69	6.79	17.10	23.24	39.19	5.63	11.54	5.61	243.79	ITALY
JAPONI	52.71	-	-	-	2.29	0.05	0.72	0.16	55.94	JAPAN
JUGOSLLAVI	0.05	-	-	-	-	-	-	-	0.05	YUGOSLAVIA
MAQEDONI	0.98	-	-	-	-	-	-	-	0.98	MACEDONIA
TURQI	26.86	-	-	-	-	-	-	-	26.86	TURKEY
KUVAIT	37.49	1.64	3.04	2.46	2.50	0.36	0.38	-	47.87	KUWAIT
KINE	41.09	-	-	-	-	-	-	-	41.09	CHINA
KOREA	18.80	3.05	0.21	-	-	-	-	-	22.05	SOUTH KOREA
POLONI	0.92	-	-	-	-	-	-	-	0.92	POLAND
RUMANI	4.50	-	-	-	-	-	-	-	4.50	ROMANIA
SPANJE	-	0.95	0.74	5.02	-	-	-	-	6.71	SPAIN
SLOVAKI	4.30	-	-	-	-	-	-	-	4.30	SLOVAKIA
SUEDI	3.14	-	-	-	-	-	-	-	3.14	SWEDEN
NORVEGJI	28.86	-	-	-	-	-	-	-	28.86	NORWAY
Saudi Arabia	-	-	4.40	5.90	1.72	0.07	-	0.05	0.05	Saudi Arabia
HOLLANDE	-	-	-	-	-	-	-	0.30	12.39	NETHERLANDS
Russia	0.73	-	-	-	-	-	-	-	0.73	Russia
Serbia	5.93	-	-	-	-	-	-	-	5.93	Serbia
ZVICRA	4.47	-	-	-	-	-	-	-	4.47	SWITZERLAND
Kreditore Private (III)	-	-	230.00	192.60	298.49	-	-	-	721.09	Private Creditors (III)
Kreditore Private	-	-	230.00	192.60	-	-	-	-	422.60	Private Creditors
EUROBONDI	-	-	-	-	298.49	-	-	-	298.49	EUROBOND
-Klubi i Parisit (IV)	91.44	-	-	-	-	-	-	-	91.44	-Paris Club (IV)
AUSTRI	8.85	-	-	-	-	-	-	-	8.85	AUSTRIA
ANGLI	0.02	-	-	-	-	-	-	-	0.02	UNITED KINGDOM
DANIMARKE	0.12	-	-	-	-	-	-	-	0.12	DENMARK
FRANCE	21.85	-	-	-	-	-	-	-	21.85	FRANCE
GJERMANI	13.14	-	-	-	-	-	-	-	13.14	GERMANY
HOLLANDE	1.18	-	-	-	-	-	-	-	1.18	NETHERLANDS
ITALI	7.57	-	-	-	-	-	-	-	7.57	ITALY
JAPONI	0.20	-	-	-	-	-	-	-	0.20	JAPAN
RUSI	38.52	-	-	-	-	-	-	-	38.52	RUSSIA
GJITHSEJ (I+II+III+IV)	1,554.31	125.09	379.19	395.84	472.90	31.66	60.39	72.13	3,091.51	TOTAL (I+II+III+IV)

*) Përfshin borxhin shtetëror dhe shtetëror të garantuar (Tabela II.1 + Tabela II.2)

Ne këto tabelle nuk përfshihen kredia e FMN-se

**) Deri më 30.09.2011, të dhëna paraprake

*) Includes Central Government and Central Government Guaranteed debt

IMF credit is not included

**) As of September. 30, 2011, data are preliminary

**BORXHI I JASHEM I QEVERISE QENDRORE
TERHEQJET NE VITE NGA KREDITE E HUAJA SIPAS KREDITOREVE**

**CENTRAL GOVERNMENT EXTERNAL DEBT
DRAWINGS BY YEARS AND BY CREDITORS**

(in million EUR)

Sipas kreditoreve	Deri ne 31.12.2006 Up to 31.12.2006	2007	2008	2009	2010	2011			TOTALI	By Creditors
						Q1	Q2	Q3		
-Shumepalesh (I)	817.18	72.61	83.58	103.69	105.44	21.55	37.04	54.43	1,295.52	-Multilateral (I)
CEB	9.98	8.40	15.41	21.83	21.30	11.50		5.64	94.06	CEB
IBRD	-	3.85	8.08	4.94	2.32	0.18	1.71	18.86	39.94	IBRD
EC	9.00				-				9.00	EC
EBRD	16.99	7.14	10.54	10.14	8.60	2.70	11.78	5.02	72.89	EBRD
EIB	69.72	11.95	16.76	17.19	27.28	-	12.96	16.68	172.55	EIB
IDA	625.05	35.02	18.53	25.02	19.61	5.38	8.13	2.23	738.97	IDA
IDB	34.07	4.94	9.45	14.80	13.39	0.69	1.14	4.39	82.87	IDB
IFAD	29.73	0.73	1.51	1.41	2.17	0.19	0.51	0.22	36.47	IFAD
OPEC	22.64	0.58	3.30	8.36	10.76	0.93	0.81	1.39	48.77	OPEC
-Dypalesh (II)	398.81	17.84	30.21	47.45	57.21	8.88	17.63	10.62	588.65	-Bilateral (II)
AUSTRIA	4.51	-	-	5.03	2.46	0.89	2.94	0.84	16.66	AUSTRIA
BULLGARI	0.08	-	-	-	-	-	-	-	0.08	BULGARIA
ÇEKI	8.49	-	-	-	-	-	-	-	8.49	CZECH REP.
GREQI	40.54	-	-	-	-	-	-	-	40.54	GREECE
GJERMANI	69.20	9.43	6.08	5.80	9.16	2.81	2.90	3.87	109.25	GERMANY
HUNGARI	11.92								11.92	HUNGARY
ITALI	88.61	5.82	15.95	23.24	39.08	4.70	10.70	5.40	193.50	ITALY
JAPONI	16.15	-	-	-	2.29	0.05	0.72	0.16	19.37	JAPAN
JUGOSLLAVI	0.05								0.05	YUGOSLAVIA
MAQEDONI	0.98								0.98	MACEDONIA
TURQI	26.86								26.86	TURKEY
KUVAIT	37.49	1.64	3.04	2.46	2.50	0.36	0.38		47.87	KUWAIT
KINE	41.09	-	-	-	-	-	-	-	41.09	CHINA
POLONI	-	-	-	-	-	-	-	-	0.92	POLAND
RUMANI	4.50	-	-	-	-	-	-	-	4.50	ROMANIA
SPANJE	-	0.95	0.74	5.02	-	-	-	-	6.71	SPAIN
SLOVAKI	4.30	-	-	-	-	-	-	-	4.30	SLOVAKIA
SUEDI	3.14	-	-	-	-	-	-	-	3.14	SWEDEN
NORVEGJI	28.86	-	-	-	-	-	-	-	28.86	NORWAY
Saudi Arabia								0.05	0.05	Saudi Arabia
HOLLANDE	-	-	4.40	5.90	1.72	0.07		0.30	12.39	NETHERLANDS
Russia	0.73								0.73	Russia
Serbia	5.93								5.93	Serbia
ZVICRA	4.47								4.47	SWITZERLAND
Kreditor Privat (III)	-	-	230.00	192.60	298.49	-	-	-	721.09	Private Creditors (III)
Kreditor Private kredi	-	-	230.00	192.60	-	-	-	-	422.60	Private Creditors Loans
EUROBONDI	-	-	-	-	298.49	-	-	-	298.49	EUROBOND
-Klubi i Parisit (IV)	91.44	-	-	-	-	-	-	-	91.44	-Paris Club (IV)
AUSTRI	8.85	-	-	-	-	-	-	-	8.85	AUSTRIA
ANGLI	0.02	-	-	-	-	-	-	-	0.02	UNITED KINGDOM
DANIMARKE	0.12	-	-	-	-	-	-	-	0.12	DENMARK
FRANCE	21.85	-	-	-	-	-	-	-	21.85	FRANCE
GJERMANI	13.14	-	-	-	-	-	-	-	13.14	GERMANY
HOLLANDE	1.18	-	-	-	-	-	-	-	1.18	NETHERLANDS
ITALI	7.57	-	-	-	-	-	-	-	7.57	ITALY
JAPONI	0.20	-	-	-	-	-	-	-	0.20	JAPAN
RUSI	38.52	-	-	-	-	-	-	-	38.52	RUSSIA
GJITHSEJ (I+II+III+IV)	1,307.43	90.45	343.79	343.74	461.13	30.44	54.67	65.05	2,696.70	TOTAL (I+II+III+IV)

Ne kete tabelë nuk përfshihen kredita e FMN-se

***) Deri më 30.09.2011, të dhëna paraprake

IMF credit is not included

***) As of September. 30, 2011, data are preliminary

**BORXHI I JASHEM I GARANTUAR NGA QEVERIA QENDRORE
TERHEQJET NE VITE NGA KREDITE E HUAJA SIPAS KREDITOREVE**

**CENTRAL GOVERNMENT GUARANTEED DEBT
DRAWINGS BY YEARS AND BY CREDITORS**

(in million EUR)

Sipas kreditoreve	Deri ne 31.12.2006 Up to 31.12.2006	2007	2008	2009	2010	2011			GJITHSEJ TOTAL	By Creditors
						Q1	Q2	Q3		
-Shumepalesh (I)	93.62	26.53	29.39	33.10	5.77	0.29	0.37	6.87	195.95	-Multilateral (I)
EBRD	63.97	7.53	14.39	22.10	5.77	0.29	0.37	6.87	121.30	EBRD
EIB	29.65	19.00	15.00	11.00	-	-	-	-	74.65	EIB
-Dypalesh (II)	153.26	8.11	6.01	18.99	5.99	0.93	5.35	0.21	198.86	-Bilateral (II)
GJERMANI	43.02	4.10	4.66	18.99	5.88	-	4.51	-	81.16	GERMANY
GREQI	8.80	-	-	-	-	-	-	-	8.80	GREECE
ITALI	46.08	0.96	1.15	-	0.11	0.93	0.84	0.21	50.29	ITALY
JAPONI	36.56	-	-	-	-	-	-	-	36.56	JAPAN
KOREA	18.80	3.05	0.21	-	-	-	-	-	22.05	SOUTH KOREA
-Klubi Parisit (III)	0.05	-	-	-	-	-	-	-	0.05	-Paris Club (III)
JAPONI	0.05	-	-	-	-	-	-	-	0.05	JAPAN
GJITHSEJ (I+II+III)	246.93	34.64	35.40	52.10	11.76	1.23	5.72	7.08	394.86	TOTAL (I+II+III)

**) Deri me 30.09.2011, te dhena paraprake

**) As of September. 30, 2011, data are preliminary

TABELA III - TABLE III

**BORXHI I JASHEM* AFATGJATE I SHQIPERISE
TERHEQJET NE VITE SIPAS SEKTOREVE EKONOMIKE**

**LONG-TERM EXTERNAL PUBLIC DEBT*
DRAWINGS BY ECONOMIC SECTORS**

(in million EUR)

Sipas sektoreve ekonomike	Deri ne 31.12.2006 Up to 31.12.2006	2007	2008	2009	2010	2011			GJITHSEJ TOTAL	By Economic Sectors
						Q1	Q2	Q3		
ADMINISTRATA SHETETERORE	31.16	1.72	-	-	-	-	-	-	32.88	Public Administration
ARESIMI	26.60	9.72	9.72	4.13	4.10	-	4.23	1.00	59.50	Education
BILANCI I PAGESAVE	18.35	-	-	-	-	-	-	-	18.35	Balance of Payment
BUJQESI, UJITJE	114.76	8.54	10.03	6.28	2.79	0.27	0.07	0.14	142.88	Agriculture-Irrigation
ENERGJETIKE	261.88	38.89	44.80	85.76	39.96	4.84	16.54	7.60	500.27	Energy
IMPORT MALLRASH DHE PAJISJESH	54.74	-	-	-	-	-	-	-	54.74	Import of Goods and Services
INDUSTRI E LEHTE	2.56	-	-	-	-	-	-	-	2.56	Light Industry
INFRASTRUKTURE URBANE DHE RURALE	45.52	3.25	7.21	4.78	1.96	1.45	0.27	1.39	65.83	Urban and Rural Infrastructure
KLUBI I PARISIT DHE RISKEDULIME TE TJERA	212.97	-	-	-	-	-	-	-	212.97	Paris Club & Other Rescheduling
MBESHETJE PER BUXHETIN	234.58	7.34	-	192.60	298.49	-	-	-	733.02	Budgetary Support
MBROJTJA	8.90	-	-	-	1.83	-	0.37	-	11.10	Defence
MBROJTJA E MJEDISIT	1.39	1.13	0.26	0.25	1.02	0.19	0.21	0.09	4.54	Environmental Protection
PYJE	7.22	-	-	-	-	-	-	-	7.22	Forestry
SHENDETESI	39.58	6.70	2.73	15.46	8.44	2.52	3.95	1.84	81.23	Health
SIGURIME SHOQ./TREGU I PUNES	11.48	1.72	2.83	0.17	0.31	0.36	0.16	18.10	35.12	Social Safety/Labor Market
STREHIMI	14.07	-	2.19	5.03	4.10	1.00	-	0.79	27.18	Housing
TELEKOMUNIKACION	14.69	-	-	-	-	-	-	-	14.69	Telecommunication
TRANSPORT	236.96	29.88	278.46	61.27	71.38	16.63	24.74	33.85	753.17	Transport
TRANSPORTI AJROR	23.64	-	-	-	-	-	-	-	23.64	Air Transport
TRANSPORTI HEKURUDHOR	3.10	-	-	-	-	-	-	-	3.10	Rail Transport
UJESJELLESA/KANALIZIME	90.73	14.83	13.80	17.71	22.16	3.74	8.18	4.52	175.66	Water Supply and Sewerage
ZHVILL. SEK.PRIVAT	41.45	0.65	5.13	0.00	11.23	0.34	0.80	0.33	59.94	Enterprise Sector Development
TE TJERA	26.53	-	-	-	-	-	-	-	26.53	Other
ZHVILLIMI RURAL	31.50	0.73	2.03	2.41	5.11	0.32	0.92	2.45	45.47	Rural Development
GJITHSEJ	1,554.35	125.09	379.20	395.84	472.90	31.66	60.44	72.10	3,091.58	TOTAL

*) Perfshin borxhin shteteror dhe shteteror te garantuar
Ne kete table nuk perfshihet kredia e FMN-se

**) Deri me 30.09.2011, te dhena paraprake

*) Includes Central Government and Central Government Guaranteed debt
IMF credit is not included

**) As of September. 30, 2011, data are preliminary

**BORXHI I JASHEM* AFATGJATE I SHQIPERISE
BORXHI NETO SIPAS KREDITOREVE**

**LONG-TERM EXTERNAL PUBLIC DEBT*
DEBT OUTSTANDING DISBURSED BY CREDITORS**

(in million EUR)

Sipas kreditoreve	31.12.2007	31.12.2008	31.12.2009	2010***	Q3-2011	By Creditors
-Shumepalesh (I)	810.94	919.37	1,018.50	1,139.85	1,240.44	-Multilateral (I)
CEB	17.59	33.17	54.84	76.17	92.99	CEB
EBRD	61.57	77.86	97.94	98.66	117.84	EBRD
EC	9.00	9.00	9.00	9.00	9.00	EC
EIB	106.70	134.17	155.55	175.49	200.58	EIB
IBRD	3.85	11.93	16.88	19.20	39.82	IBRD
IDA	549.79	577.31	587.69	636.83	647.89	IDA
IDB	28.40	37.85	51.48	65.86	71.54	IDB
IFAD	24.36	26.03	26.62	29.68	30.21	IFAD
OPEC	9.67	12.05	18.51	28.97	30.57	OPEC
-Dypalesh (II)	323.41	357.67	408.85	466.23	495.86	-Bilateral (II)
GJERMANI	107.82	116.96	139.27	147.79	156.83	GERMANY
GREQI	13.19	12.94	12.69	12.44	12.22	GREECE
AUSTRI			5.03	7.49	12.16	AUSTRIA
ITALI	117.64	129.86	147.79	181.66	199.78	ITALY
JAPONI	36.39	45.05	41.57	48.98	50.77	JAPAN
KINE	1.26	1.32	1.29	1.39	1.37	CHINA
KUVAIT	21.79	23.73	23.03	26.75	26.19	KUWAIT
NORVEGJI	7.56	6.14	4.29	2.78	1.83	NORWAY
HOLLANDE		4.40	9.98	10.60	9.71	NETHERLANDS
SPANJE	0.95	1.74	6.46	6.97	6.88	SPAIN
KOREA	16.81	15.52	17.44	19.38	18.06	SOUTH KOREA
Arabia Saudite					0.06	Saudi Arab
Kreditore private (III)		230.00	422.60	530.00	530.00	Private Creditors (III)
KREDITORE PRIVATE		230.00	422.60	230.00	230.00	PRIVATE CREDITORS
EUROBONDI				300.00	300.00	EUROBOND
-Borxhi i riskeduluar (IV) (A+B)	75.93	70.75	88.94	83.23	82.76	-Rescheduled Debt (IV) (A+B)
-Klubi i Parisit (A)	27.36	27.21	25.60	26.58	25.70	-Paris Club (A)
GJERMANI	1.00	0.33	-	-	-	GERMANY
ITALI	2.75	2.66	2.49	2.41	2.31	ITALY
RUSI	23.61	24.22	23.11	24.17	23.39	RUSSIA
-Te tjere (B)	48.57	43.54	63.34	56.66	57.06	-Others (B)
TURQI	12.64	11.65	9.87	9.01	8.08	TURKEY
GREQI			27.70	25.71	23.30	GREECE
KINE	17.96	16.41	13.75	12.37	10.98	CHINA
HUNGARI	5.78	5.04	3.94	3.19	3.14	HUNGARY
GJERMANI	2.21	1.47	0.74	-	-	GERMANY
RUMANIA	2.76	2.50	2.07	1.82	1.40	ROMANIA
SLLOVAKI	2.41	2.16	1.76	1.52	1.50	SLOVAK REP.
ÇEKI	4.82	4.31	3.51	3.03	2.99	CZECH REP.
SERBIA					5.67	Rep. of Serbia
GJITHSEJ (I+II+III+IV)	1,210.27	1,577.79	1,938.89	2,219.31	2,349.06	TOTAL (I+II+III+IV)

*) Përfshin borxhin shtetëror dhe shtetëror të garantuar

Ne kete tabelë nuk përfshihet kredia e FMN-se

**) Deri më 30.09.2011, të dhëna paraprake

***) Të dhëna të rishikuara

*) Includes Central Government and Central Government Guaranteed debt
IMF credit is not included

**) As of September. 30, 2011, data are preliminary

***) Revised data

BORXHI I JASHEM I QEVERISE QENDRORE
BORXHI NETO SIPAS KREDITOREVE

CENTRAL GOVERNMENT EXTERNAL DEBT
DEBT OUTSTANDING DISBURSED BY CREDITORS

(in million EUR)

Sipas kreditoreve	31.12.2007	31.12.2008	31.12.2009	2010***	Q3-2011	By Creditors
-Shumepalesh (I)	725.89	812.87	889.90	1,017.57	1,116.83	-Multilateral (I)
CEB	17.59	33.17	54.84	76.17	92.99	CEB
EBRD	21.29	30.42	37.78	43.22	60.27	EBRD
EC	9.00	9.00	9.00	9.00	9.00	EC
EIB	61.92	75.12	87.10	108.65	134.54	EIB
IBRD	3.85	11.93	16.88	19.20	39.82	IBRD
IDA	549.79	577.31	587.69	636.83	647.89	IDA
IDB	28.40	37.85	51.48	65.86	71.54	IDB
IFAD	24.36	26.03	26.62	29.68	30.21	IFAD
OPEC	9.67	12.05	18.51	28.97	30.57	OPEC
-Dypalesh (II)	183.45	208.95	245.72	301.17	330.11	-Bilateral (II)
GJERMANI	66.06	71.17	76.78	83.39	91.66	GERMANY
GREQI	4.39	4.14	3.89	3.64	3.42	GREECE
AUSTRI	-	-	5.03	7.49	12.16	AUSTRIA
ITALI	70.98	83.41	103.14	142.52	159.90	ITALY
JAPONI	10.46	12.89	11.83	15.65	16.94	JAPAN
KINE	1.26	1.32	1.29	1.39	1.37	CHINA
KUVAIT	21.79	23.73	23.03	26.75	26.19	KUWAIT
NORVEGJI	7.56	6.14	4.29	2.78	1.83	NORWAY
HOLLAND	-	4.40	9.98	10.60	9.71	NETHERLANDS
SPANJA	0.95	1.74	6.46	6.97	6.88	SPAIN
Arabia Saudite	-	-	-	-	0.05	Saudi Arab
Kreditore Private (III)	-	230.00	422.60	530.00	530.00	Private Creditors(III)
KREDITORE PRIVATE	-	230.00	422.60	230.00	230.00	PRIVATE CREDITORS
EUROBONDI	-	-	-	300.00	300.00	EUROBOND
-Borxhi i riskedeluar (IV) (A+B)	75.93	70.75	88.94	83.23	82.76	-Rescheduled Debt (IV) (A+B)
-Klubi i Parisit (A)	27.36	27.21	25.60	26.58	25.70	-Paris Club (A)
GJERMANI	1.00	0.33	-	-	-	GERMANY
ITALI	2.75	2.66	2.49	2.41	2.31	ITALY
RUSI	23.61	24.22	23.11	24.17	23.39	RUSSIA
-Te tjere (B)	48.57	43.54	63.34	56.66	57.06	-Others (B)
TURQI	12.64	11.65	9.87	9.01	8.08	TURKEY
GREQI	-	-	27.70	25.71	23.30	GREECE
KINE	17.96	16.41	13.75	12.37	10.98	CHINA
HUNGARI	5.78	5.04	3.94	3.19	3.14	HUNGARY
GJERMANI	2.21	1.47	0.74	-	-	GERMANY
RUMANIA	2.76	2.50	2.07	1.82	1.40	ROMANIA
SLLOVAKI	2.41	2.16	1.76	1.52	1.50	SLOVAK REP.
ÇEKI	4.82	4.31	3.51	3.03	2.99	CZECH REP.
SERBIA	-	-	-	-	5.67	Rep. of Serbia
GJITHSEJ (I+II+III+IV)	985.26	1,322.58	1,647.16	1,931.97	2,059.70	TOTAL (I+II+III+IV)

Ne kete tabelë nuk përfshihen kredia e FMN-se

** Deri më 30.09.2011, të dhëna paraprake

*** Të dhëna të rishikuara

IMF credit is not included

** As of September. 30, 2011, data are preliminary

*** Revised data

**BORXHI I JASHEM I GARANTUAR NGA QEVERIA QENDRORE
BORXHI NETO SIPAS KREDITOREVE**

**CENTRAL GOVERNMENT GUARANTEED DEBT
DEBT OUTSTANDING DISBURSED BY CREDITORS**

(in million EUR)

Sipas kreditoreve	31.12.2007	31.12.2008	31.12.2009	2010	Q3-2011	By Creditors
-Shumepalesh (I)	85.06	106.50	128.61	122.28	123.61	-Multilateral (I)
EBRD	40.28	47.44	60.16	55.44	57.57	EBRD
EIB	44.78	59.06	68.45	66.84	66.04	EIB
-Dypalesh (II)	139.95	148.72	163.13	165.06	165.74	-Bilateral (II)
GJERMANI	41.76	45.79	62.49	64.40	65.17	GERMANY
GREQI	8.80	8.80	8.80	8.80	8.80	GREECE
ITALI	46.66	46.45	44.65	39.14	39.88	ITALY
JAPONI	25.92	32.15	29.74	33.34	33.83	JAPAN
KOREA	16.81	15.52	17.44	19.38	18.06	SOUTH KOREA
GJITHSEJ (I+II)	225.01	255.21	291.73	287.34	289.35	TOTAL (I+II)

**) Deri me 30.09.2011, te dhena paraprake

**) As of September. 30, 2011, data are preliminary

BORXHI I JASHEM* AFATGJATE I SHQIPERISE
BORXHI NETO SIPAS MONEDHAVE

LONG-TERM EXTERNAL PUBLIC DEBT*
DOD BY CURRENCY

(in million EUR)

Monedha Currency	2009		2010		2011	
	Amount	%	Amount	%	Amount	%
ACU	51.48	2.66	65.86	2.97	67.84	2.89%
EUR	1,069.99	55.19	1,265.86	57.04	1,378.51	58.68%
JPY	41.56	2.14	48.98	2.21	50.77	2.16%
KWD	23.03	1.19	26.74	1.20	26.19	1.11%
KRW	17.44	0.90	19.38	0.87	18.06	0.77%
SAR					0.05	0.00%
SDR	614.31	31.68	666.51	30.03	678.11	28.87%
USD	121.07	6.24	125.99	5.68	129.54	5.51%
TOTAL	1,938.88	100.00	2,219.31	100.00	2,349.07	100.00%

*) Përfshin borxhin e jashtëm shtetëror dhe shtetëror të garantuar

**) Deri më 30.09.2011, të dhëna paraprake

Nuk përfshihet kredia e FMN-se

*) Includes external public and external publicly guaranteed debt

**) As of September. 30, 2011, data are preliminary

IMF credit is not included

**BORXHI I JASHEM* AFATGJATE I SHQIPERISE
PJESA E PATERHEQUR E KREDIVE**

**LONG-TERM EXTERNAL PUBLIC DEBT*
COMMITTED UNDISBURSED BALANCE**

(in million EUR)

Sipas kreditoreve	2007	2008	2009	2010	2011	By Creditors
-Shumepalesh (I)	399.77	430.38	405.41	391.74	501.69	-Multilateral (I)
CEB	38.24	38.85	62.01	40.75	23.60	CEB
EBRD	64.27	75.20	77.95	63.58	86.55	EBRD
EIB	117.83	109.06	80.88	103.60	73.95	EIB
IBRD	31.05	22.97	23.50	21.45	18.74	IBRD
IDA	102.65	122.26	100.27	85.99	69.02	IDA
IDB	22.73	42.98	34.97	54.10	212.00	IDB
IFAD	5.49	4.11	9.02	7.40	6.48	IFAD
OPEC	17.51	14.96	16.82	14.89	11.35	OPEC
-Dypalesh (II)	267.45	354.11	311.76	372.77	394.29	-Bilateral (II)
GJERMANI	58.20	54.96	49.23	125.18	157.09	GERMANY
GREQI			-	-	-	GREECE
ITALI	198.38	181.23	157.98	118.79	96.02	ITALY
JAPONI	-	87.55	85.88	100.00	103.84	JAPAN
KUVAIT	5.30	17.47	14.07	13.42	12.59	KUWAIT
AUSTRI			2.46	5.96	15.89	AUSTRIA
ArabiaSaudit				9.00	8.80	Saudi Arab
HOLLANDE		8.05	2.15	0.43	0.06	NETHERLANDS
SPANJA	5.38	4.87	-	-	-	SPAIN
KOREA	0.19	-				SOUTH KOREA
GJITHSEJ (I+II)	667.21	784.49	717.18	764.52	895.98	TOTAL (I+II)

*) Perfshin borxhin shteteror dhe shteteror te garantuar

**) Deri me 30.09.2011, te dhena paraprake

Ne kete tabele nuk perfshihet kredia e FMN-se

*) Includes Central Government and Central Government Guaranteed debt

**) As of September. 30, 2011, data are preliminary

IMF credit is not included

**BORXHI I JASHEM I QEVERISE QENDRORE
PJESA E PATERHEQUR E KREDIVE**

**CENTRAL GOVERNMENT EXTERNAL DEBT
COMMITTED UNDISBURSED BALANCE**

(in million EUR)

Sipas kreditoreve	2007	2008	2009	2010	2011	By Creditors
-Shumepalesh (I)	316.96	363.11	371.24	363.35	480.83	-Multilateral (I)
CEB	38.24	38.85	62.01	40.75	23.60	CEB
EBRD	7.46	18.92	43.79	35.18	65.69	EBRD
EIB	91.83	98.06	80.88	103.60	73.95	EIB
IBRD	31.05	22.97	23.50	21.45	18.74	IBRD
IDA	102.65	122.26	100.27	85.99	69.02	IDA
IDB	22.73	42.98	34.97	54.10	212.00	IDB
IFAD	5.49	4.11	9.02	7.40	6.48	IFAD
OPEC	17.51	14.96	16.82	14.89	11.35	OPEC
-Dypalesh (II)	216.36	309.07	285.72	352.72	380.72	-Bilateral (II)
GJERMANI	23.72	25.14	38.40	120.23	156.65	GERMANY
GREQI	-	-	-	-	-	GREECE
ITALI	181.96	166.01	142.76	103.68	82.89	ITALY
JAPONI	-	87.55	85.88	100.00	103.84	JAPAN
KUVAIT	5.30	17.47	14.07	13.42	12.59	KUWAIT
AUSTRI	-	-	2.46	5.96	15.89	AUSTRIA
HOLLANDE	-	8.05	2.15	0.43	0.06	NEITHERLANDS
ArabiaSaudit	-	-	-	9.00	8.80	Saudi Arab
SPANJA	5.38	4.87	-	-	-	SPAIN
GJITHSEJ (I+II)	533.32	672.18	656.96	716.07	861.55	TOTAL (I+II)

**) Deri me 30.09.2011, te dhena paraprake
Ne kete tabele nuk perfshihet kredia e FMN-se

**) As of September. 30, 2011, data are preliminary
IMF credit is not included

**BORXHI I JASHEM I GARANTUAR NGA QEVERIA QENDRORE
PJESA E PATERHEQUR E KREDIVE**

**CENTRAL GOVERNMENT GUARANTEED DEBT
COMMITTED UNDISBURSED BALANCE**

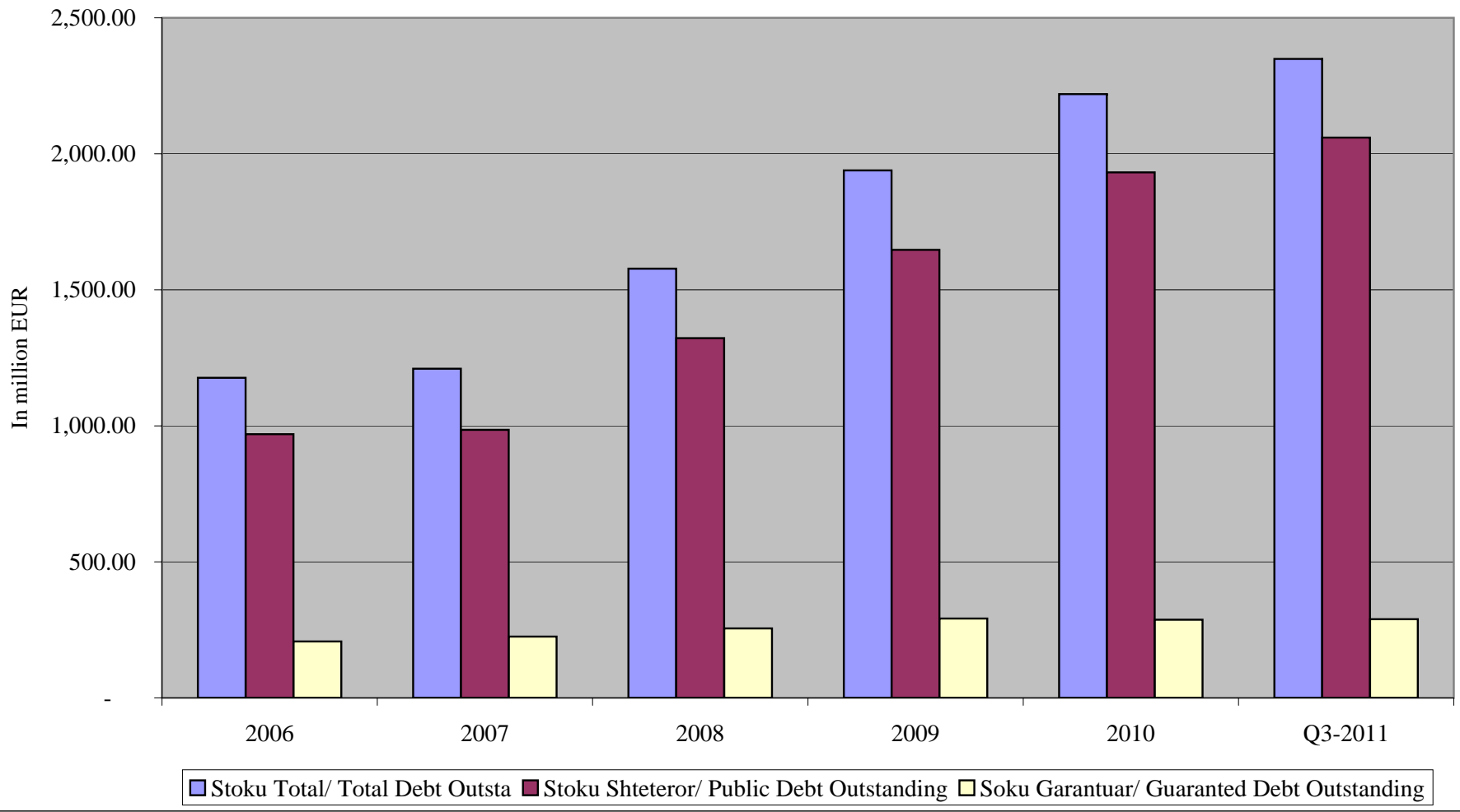
(in million EUR)

Sipas kreditoreve	2007	2008	2009	2010	2011	By Creditors
-Shumepalesh (I)	82.81	67.27	34.17	28.40	20.86	-Multilateral (I)
EBRD	56.81	56.27	34.17	28.40	20.86	EBRD
EIB	26.00	11.00	-	-	-	EIB
-Dypalesh (II)	51.09	45.04	26.05	20.05	13.57	-Bilateral (II)
GJERMANI	34.48	29.82	10.83	4.95	0.44	GERMANY
ITALI	16.42	15.22	15.22	15.11	13.13	ITALY
KOREA	0.19	-	-	-	-	SOUTH KOREA
GJITHSEJ (I+II)	133.90	112.31	60.22	48.45	34.43	TOTAL (I+II)

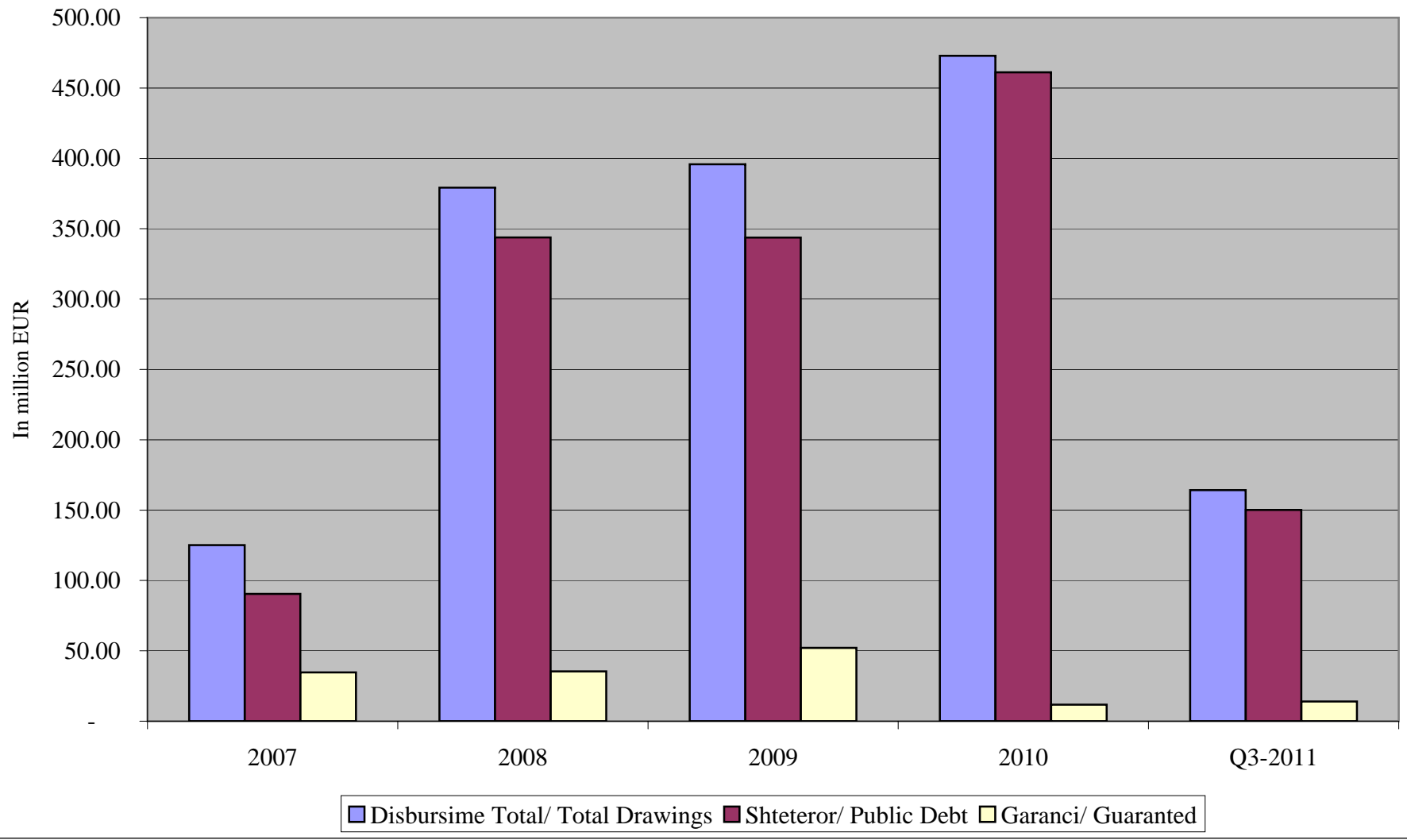
**) Deri me 30.09.2011, te dhena paraprake

**) As of September. 30, 2011, data are preliminary

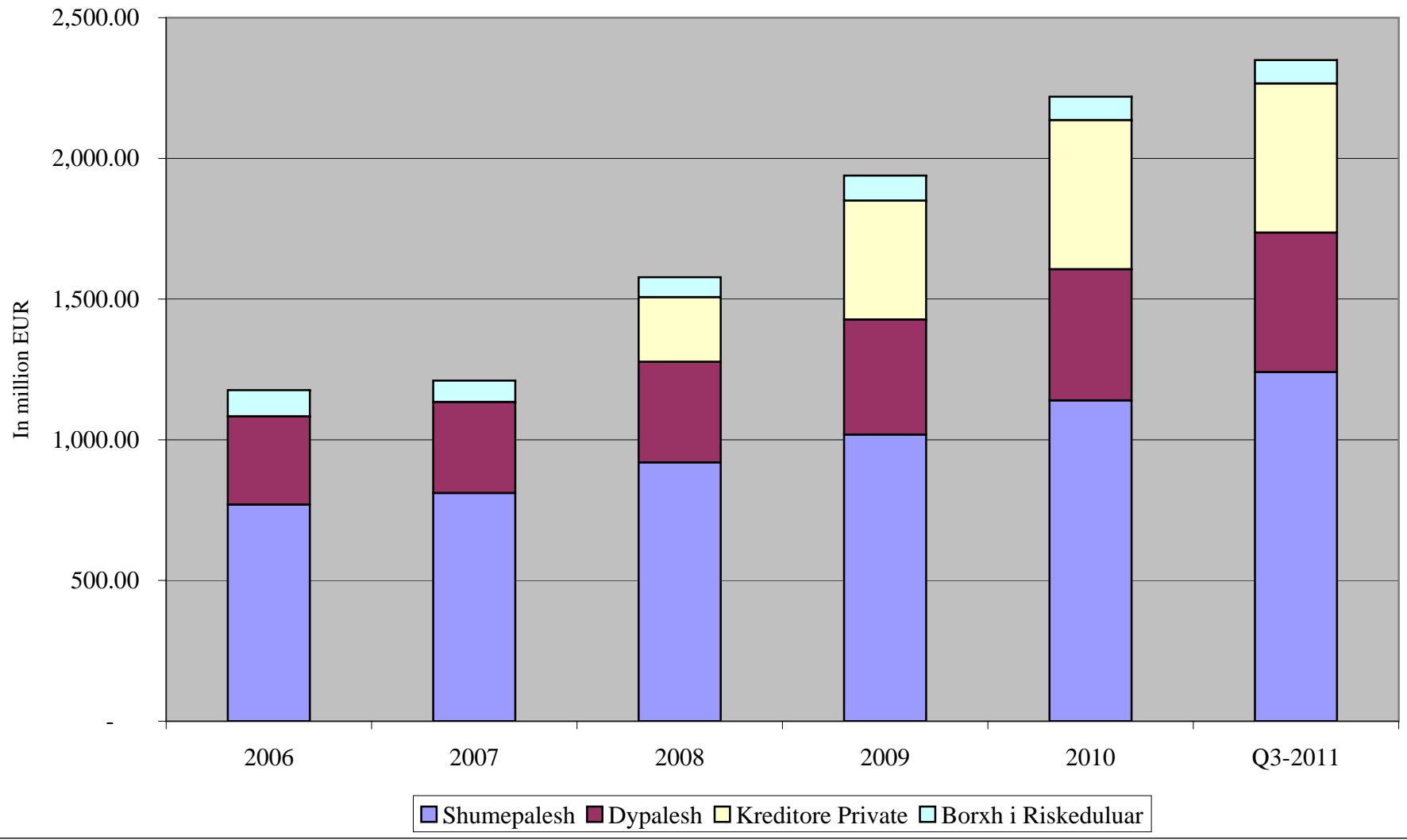
Paraqitja Grafike e Ecurise se Stokut te Borxhit te Jashtem
External Outstanding Debt



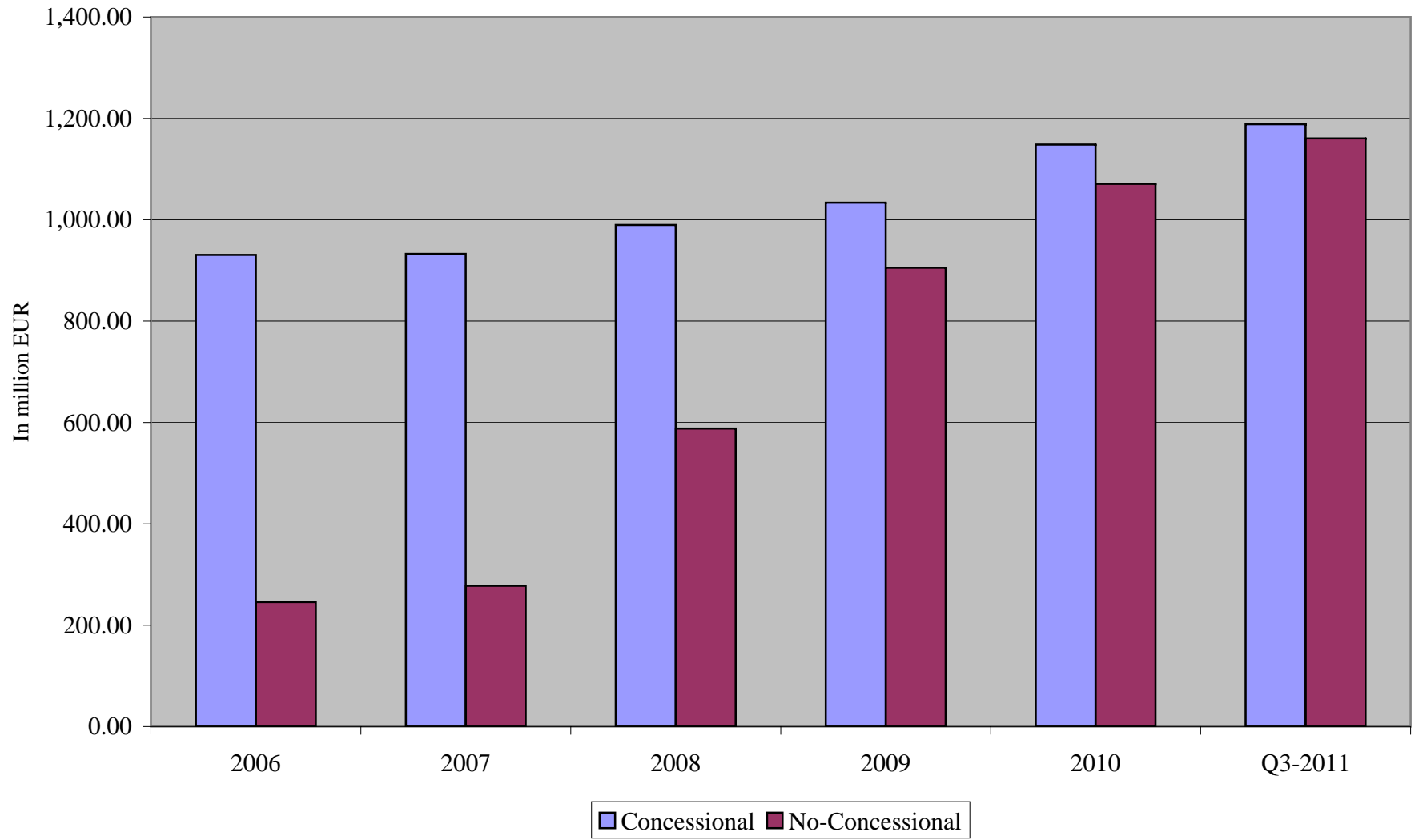
Ecuria e Disbursimeve te Borxhit te Jashtem
External Debt Drawings



Stoku i Borxhit te Jashtem Sipas Kreditoreve
Debt Outstanding by Creditor Type

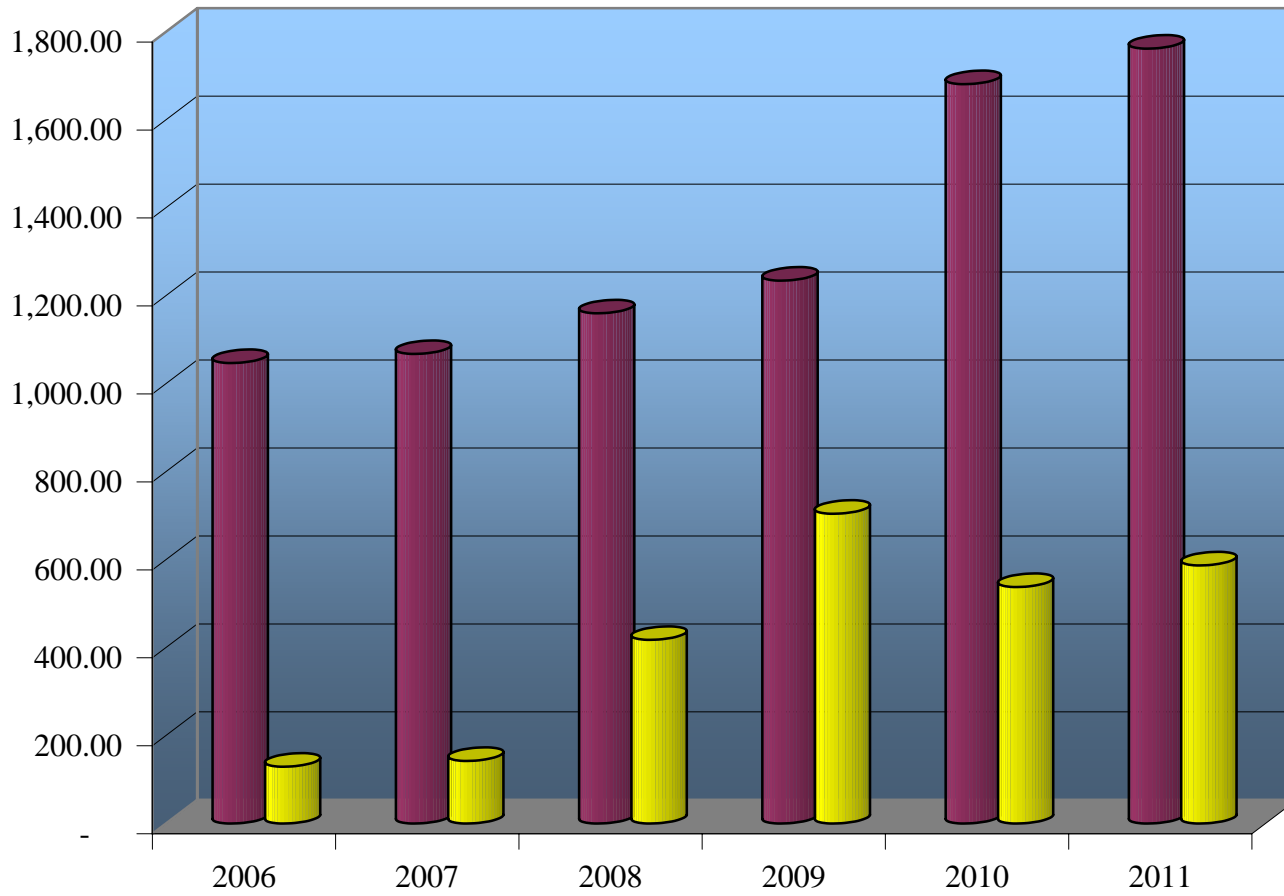


Stoku Borxhit te Jashtem sipas Koncesionalitetit
Debt Outstanding by Concessionality



Stoku i Borxhit te Jashtem sipas interesit
Debt Outstanding by Interest Type

in million Euro



Int. Fix

Int. Variabel