



**REPUBLIKA E SHQIPERISE**  
**MINISTRIA E FINANCAVE**  
**DREJTORIA E PERGJITHSHME E MENAXHIMIT TE BORXHIT PUBLIK**



**MINISTRIA E FINANCAVE**

**Treguesit e Borxhit – 6/Mujori I-re 2011**

**Debt Indicators as of June 30, 2011**

## **Ecuria e Borxhit Publik Janar-Qershor 2011**

Ne fund te Qershorit 2011 stoku i borxhit publik arriti ne 751.5 miliarde leke duke u rritur me 5% ne krahasim me nivelin e tij ne Dhjetor 2010. Struktura e stokut te borxhit publik ka mbetur e njejte: si ne fund te vitit 2010, ashtu edhe ne Qershor 2011, 99.97% te ketij borxhi e perfaqeson borxhi i Qeverise Qendrore, ndersa borxhi i pushtetit lokal ze vetem 0.03% te stokut.

### *Struktura e stokut te borxhit te Qeverise Qendrore*

Borxhi i brendshem perfaqeson 58% te borxhit te Qeverise Qendrore. Perberja e stokut te borxhit te brendshem *sipas instrumentave*, ka mbetur e njejte. Keshtu instrumentat afatgjate zene 42% te stokut.

Nga pikepamja e *monedhave perberese*, 99.5% e borxhit te brendshem eshte borxh ne leke.

Struktura e borxhit te brendshem *sipas mbajtesve* te tij ne fund te gjashtemujorit te pare 2011 nuk ka pesuar ndryshime ne krahasim me fundvitin 2010. 99.3% e mbajtesve te tij jane rezidente.

Borxhi i jashtem perfaqeson 42% te stokut te borxhit te Qeverise Qendrore. Struktura e tij: borxhi i jashtem shteteror – borxh i jashtem i garantuar ka mbetur e pandryshuar ne krahasim me fundin e vitit 2010 ne raportin 87% me 13%.

Po ashtu edhe perberja e stokut te borxhit te jashtem *sipas koncensionalitetit dhe tipit te interesit* ka mbetur pothuajse e pandryshuar ne krahasim me vitin 2010.

Persa i perket strukture se stokut te borxhit te jashtem *sipas monedhave*, EUR eshte monedha kryesore. 71% e stokut te borxhit te jashtem perbehet nga stoku i borxhit ne EUR (ne kete shifer merret parasysh edhe perberja e SDR sipas monedhave perkatese).

### *Ecuria e kostos se sherbimit te borxhit*

Gjate 6-mujorit te pare te vitit 2011 ne tregun e brendshem primar, yieldet e letrave me vlere te Qeverise kane patur tendence rritese. Megjithate yieldi mesatar i ponderuar i portofolit te letrave me vlere te Qeverise eshte ulur ne krahasim me fundin e 2010 nga 8,432% ne 8,048% ne fund te Qershorit 2011, si rezultat i rritjes se peshes specifike te instrumentave afatshkurter.

Persa i perket normave te interesit ne tregjet nderkombetare (Libor, Euribor), gjate kesaj periudhe te vitit 2011 eshte vene re gjithashtu tendenca ne rritje e tyre, gje qe do te jape ndikimin e vet ne sherbimin e borxhit te jashtem.

**Stoku i Borxhit Publik**  
**Public Debt Stock**

million ALL

	2009	2010	30.06.2011	
<b>Borxhi Publik</b>	682,404	715,475	751,473	<b>Public Debt Stock</b>
- Borxhi i Qeverise Qendrore	682,404	715,328	751,270	<b>Central Government Debt Stock</b>
- Borxhi i pushtetit lokal	-	147	203	<b>Local Government Debt Stock</b>

**Borxhi i Qeverise Qendrore**  
**Central Government Debt Stock**

million ALL

	2009	2010	30.06.2011	
<b>Borxhi i Qeverise Qendrore, nga i cili:</b>	<b>682,404</b>	<b>715,328</b>	<b>751,270</b>	<b>Central Government Debt Stock, of which:</b>
-Borxhi i brendshem	415,028	407,372	436,359	<b>-Domestic Debt</b>
-Borxhi i jashtem*	267,376	307,956	314,911	<b>-Foreign Debt</b>

\*) Te dhenat per gjendjen me 30.06.2011 jane paraprake

\*) Preliminary data for June 30, 2011

**Borxhi i Qeverise Qendrore**  
**Central Government Debt Stock**

million ALL

	2009	2010	30.06.2011	
<b>Borxhi i Qeverise Qendrore, nga i cili:</b>	<b>682,404</b>	<b>715,328</b>	<b>751,270</b>	<b>Central Government Debt Stock, of which:</b>
-Borxhi i Qeverise	636,629	669,903	705,813	<b>-Central Government Debt</b>
-Borxhi i garantuar nga Qeveria	45,775	45,425	45,457	<b>-Central Government Guaranteed Debt</b>

\*) Te dhenat per gjendjen me 30.06.2011 jane paraprake

\*) Preliminary data for June 30, 2011

**Borxhi i Qeverise Qendrore**  
**Gross Central Government Debt**

ALL millions

	2010Q3	2010Q4	2011Q1	2011Q2	
<b>Gross Central Government Debt</b>					<b>Gross Central Government Debt</b>
<b><u>Sipas Maturimit dhe Instrumentave</u></b>	<b>666,019</b>	<b>669,907</b>	<b>689,809</b>	<b>705,815</b>	<b><u>By maturity and type of instrument:</u></b>
<b>Afat shkurter sipas maturimit origjinal</b>	<b>250,078</b>	<b>231,436</b>	<b>241,356</b>	<b>247,393</b>	<b>Short-term by original maturity</b>
Letra me vlere te borxhit	250,078	231,436	241,356	247,393	Debt securities
Kredi					Loans
<b>Afat gjate sipas maturimit origjinal</b>	<b>415,941</b>	<b>438,471</b>	<b>448,453</b>	<b>458,422</b>	<b>Long-term, by original maturity:</b>
<b>Me shlyerje brenda nje viti</b>	<b>37,912</b>	<b>38,082</b>	<b>49,504</b>	<b>44,790</b>	<b>With payment due in one year or less:</b>
Letra me vlere te borxhit	37,407	37,407	48,867	44,060	Debt securities
Kredi	505	675	637	730	Loans
<b>Me shlyerje mbi nje vit</b>	<b>378,029</b>	<b>400,389</b>	<b>398,950</b>	<b>413,632</b>	<b>With payment due in more than one year:</b>
Letra me vlere te borxhit	130,365	174,609	171,992	181,672	Debt securities
Kredi	247,664	225,780	226,958	231,960	Loans
<b>Borxhi gjithsej</b>	<b>666,019</b>	<b>669,907</b>	<b>689,809</b>	<b>705,815</b>	<b>Total gross debt</b>
Letra me vlere te borxhit	<b>417,850</b>	<b>443,452</b>	<b>462,215</b>	<b>473,125</b>	Debt securities
Kredi	<b>248,169</b>	<b>226,455</b>	<b>227,594</b>	<b>232,690</b>	Loans
<b><u>Sipas monedhes se emetimit</u></b>					<b><u>By currency of denomination:</u></b>
Monedhe kombetare	414,541	398,504	417,697	428,341	Domestic currency
Monedhe te huaj	251,478	271,403	272,112	277,474	Foreign currency
<b><u>Sipas rezidences se kreditoreve</u></b>					<b><u>By residence of the creditor:</u></b>
Kreditore vendas	419,312	402,490	421,571	432,251	Domestic creditors
Kreditore te huaj	246,707	267,417	268,239	273,564	External creditors
<b><u>Memorandum item:</u></b>					<b><u>Memorandum item:</u></b>
<b>Borxhi i Brendshem i garantuar</b>	5,538	5,551	5,623	5,656	<b>Domestic Guaranteed Debt</b>
<b>Borxhi i jashtem i garantuar</b>	40,284	39,874	39,763	39,801	<b>External Guaranteed Debt</b>
<b>Borxhi i garantuar gjithsej</b>	<b>45,822</b>	<b>45,425</b>	<b>45,386</b>	<b>45,457</b>	<b>Total Guaranteed Debt</b>

**Financimi i brendshem i Deficitit Buxhetor 6/M I-re 2011**  
**Domestic Deficit Financing as of June 30, 2011**

mije leke

mije ALL

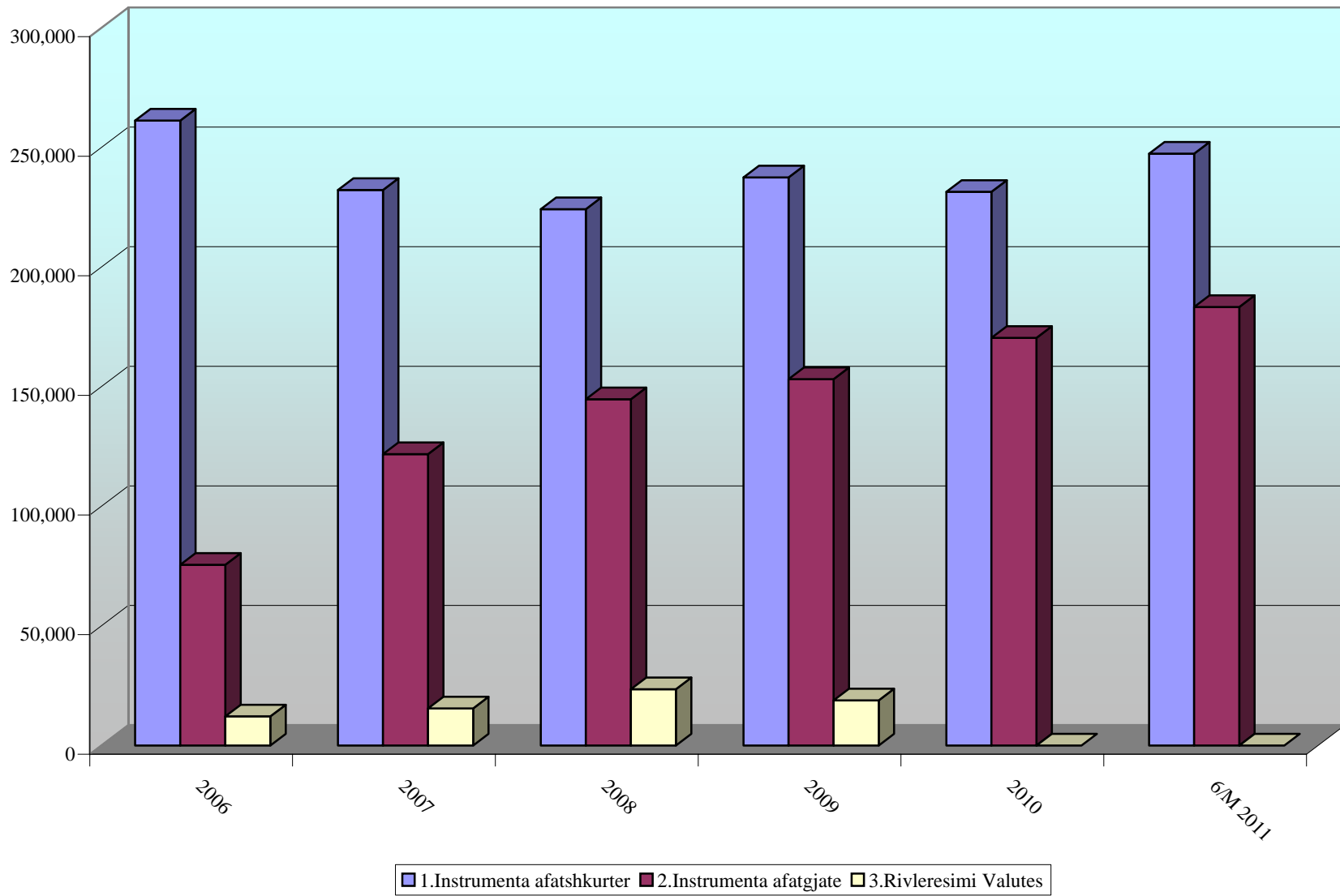
<b>Periudha</b>	<b>6/m I</b>	
<b>Financimi i Deficitit</b>	<b>28,825,485</b>	Deficit financing
Nga i cili:		of which :
<b>Instrumenta Afatshkurter</b>	<b>15,902,085</b>	Short term instruments
- Bono Thesari Leke	16,913,773	Tbills ( leke)
- Bono Thesari Euro	-1,011,688	Tbills ( EURO)
- Kredi Direkte	0	Credit from BOA
<b>Instrumenta Afatgjate</b>	<b>12,923,400</b>	Long term instruments
- Oblig.e qeverise 2 vjecare	2,543,000	2 y bonds
- Oblig.e qeverise 3 vjecare	2,023,600	3 y bonds
- Oblig.e qeverise 5 vjecare	8,356,800	5 y bonds
- Oblig.e qeverise 7 vjecare	0	7 y bonds
GDP	1,326,057,000	GDP
<b>Financimi i Deficitit / GDP</b>	2.17%	Deficit financing / GDP
<b>Instrumenta Afatshkurter / GDP</b>	1.20%	Short term instruments / GDP
<b>Instrumenta Afatgjate / GDP</b>	0.97%	Long term instruments / GDP

**Borxhi i Brendshem sipas instrumentave**  
**Domestic Debt Stock by Instruments**

milion ALL

	31.12.2007		31.12.2008		31.12.2009		31.12.2010		31.03.2011		30.06.2011		
	Purchase value	%	Purchase value	%	Purchase value	%	Purchase value	%	Purchase value	%	Purchase value	%	
<b>Stoku I Borxhit Gjithsej</b>	<b>369,536</b>		<b>400,456</b>		<b>415,028</b>		<b>407,372</b>		<b>425,667</b>		<b>436,358</b>		<b>Total Debt Stock</b>
<b>I.Borxhi Shteteror</b>	<b>369,536</b>	<b>100.00</b>	<b>395,504</b>	<b>98.76</b>	<b>409,501</b>	<b>98.67</b>	<b>401,821</b>	<b>98.64</b>	<b>420,044</b>	<b>98.68</b>	<b>430,702</b>	<b>98.70</b>	<b>I.Public Debt</b>
<b>1.Instrumenta afatshkurter</b>	<b>232,211</b>	<b>62.84</b>	<b>224,224</b>	<b>55.99</b>	<b>237,469</b>	<b>57.22</b>	<b>231,436</b>	<b>56.81</b>	<b>241,356</b>	<b>56.70</b>	<b>247,393</b>	<b>56.69</b>	<b>I.Short term Instruments</b>
Bono 3/M	30,695	8.31	25,774	6.44	22,870	5.51	11,495	2.82	12,168	2.86	11,841	2.71	3 Month Bills
Bono 6/M	57,911	15.67	54,631	13.64	47,647	11.48	44,188	10.85	47,954	11.27	47,886	10.97	6 Month Bills
Bono 9/M							3,317	0.83	2,347	0.56	2,360	0.55	9 Month Bills
Bono 12/M	143,605	38.86	143,819	35.91	166,952	40.23	172,436	42.33	178,887	42.03	185,306	42.47	1 Year Bills
<b>2.Instrumenta afatgjate</b>	<b>121,820</b>	<b>32.97</b>	<b>144,740</b>	<b>36.14</b>	<b>153,162</b>	<b>36.90</b>	<b>170,385</b>	<b>41.83</b>	<b>178,688</b>	<b>41.98</b>	<b>183,309</b>	<b>42.01</b>	<b>II. Long term Instruments</b>
Oblig.2/Vj	66,460	17.98	65,730	16.41	65,247	15.72	70,957	17.42	71,507	16.80	73,500	16.84	2 Year Note
Oblig.3/Vj	25,250	6.83	21,100	5.27	15,600	3.76	15,613	3.83	17,913	4.21	17,637	4.04	3 Year Note
Oblig.5/Vj	24,110	6.52	45,910	11.46	60,315	14.53	71,815	17.63	77,268	18.15	80,172	18.37	5 Year Note
Oblig.7/Vj	6,000	1.62	12,000	3.00	12,000	2.89	12,000	2.95	12,000	2.82	12,000	2.75	7 Year Note
<b>3. Kredi Direkte</b>	<b>0</b>	<b>0.00</b>	<b>3,000</b>	<b>0.75</b>		<b>0.00</b>		<b>0.00</b>		<b>0.00</b>		<b>0.00</b>	<b>Central Bank Credits</b>
<b>4.Rivleresimi Valutes</b>	<b>15,505</b>	<b>4.20</b>	<b>23,540</b>	<b>5.88</b>	<b>18,870</b>	<b>4.55</b>	<b>0</b>	<b>0.00</b>	<b>0</b>	<b>0.00</b>	<b>0</b>	<b>0.00</b>	<b>Forgn.Ex.Res.Evalu.</b>
<b>II.Borxhi i Garantuar</b>	<b>0</b>	<b>0.00</b>	<b>4,952</b>	<b>1.24</b>	<b>5,527</b>	<b>1.33</b>	<b>5,551</b>	<b>1.36</b>	<b>5,623</b>	<b>1.32</b>	<b>5,656</b>	<b>1.30</b>	<b>II.Publicly Guaranteed Debt</b>
<b>I. Garanci Treg.Brend.</b>	<b>0</b>	<b>0.00</b>	<b>4,952</b>	<b>1.24</b>	<b>5,527</b>	<b>1.33</b>	<b>5,551</b>	<b>1.36</b>	<b>5,623</b>	<b>1.32</b>	<b>5,656</b>	<b>1.30</b>	<b>Domestic Guarantees</b>

**Struktura e Borxhit te Brendshem**  
**Domestic Debt Structure**



**Struktura e Borxhit te Brendshem Shteteror \***  
**Structure of Central Government Domestic Debt**

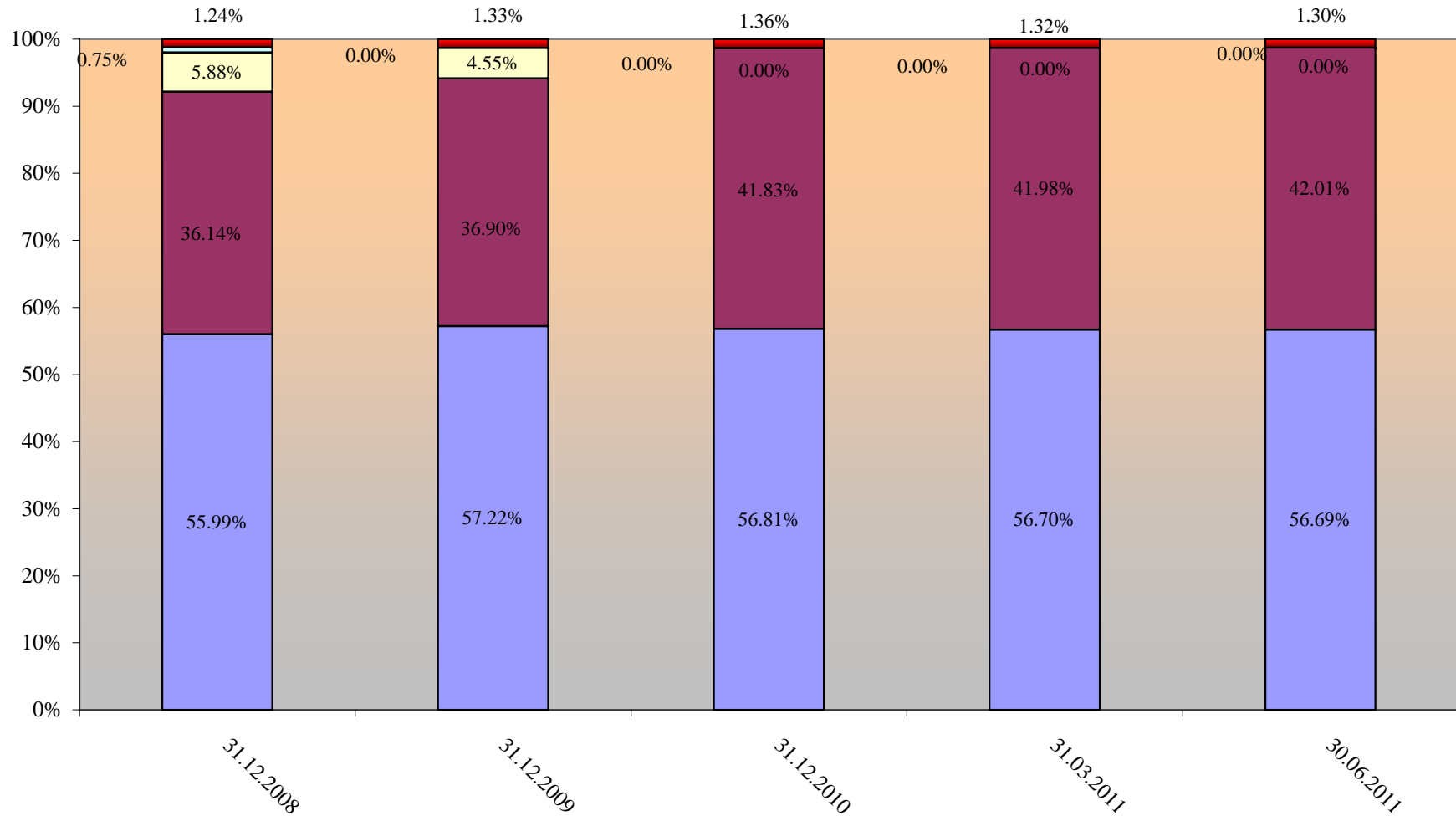
	2009		2010		3/M I-re 2011		6/M I-re 2011		
	million ALL	%	million ALL	%	million ALL	%	million ALL	%	
<b>- Sipas Instrumentave</b>	<b>390,631</b>		<b>401,821</b>		<b>420,044</b>		<b>430,702</b>		- By instruments
Instrumenta afatshkurter	237,469	60.79%	231,436	57.60%	241,356	57.46%	247,393	57.44%	short tern
Instrumenta afatgjate	153,162	39.21%	170,385	42.40%	178,688	42.54%	183,309	42.56%	long term
<b>-Sipas monedhes</b>	<b>390,631</b>		<b>401,821</b>		<b>420,044</b>		<b>430,702</b>		- By currency
-Monedhe kombetare	390,631	100.00%	398,352	99.14%	417,697	99.44%	428,341	99.45%	domestic currency
-Monedhe huaj	0	0.00%	3,469	0.86%	2,347	0.56%	2,361	0.55%	foreign currency
<b>- Sipas rezidences se kreditorit</b>	<b>390,631</b>		<b>401,821</b>		<b>420,044</b>		<b>430,702</b>		- By creditor's residence
- rezidente	388,456	99.44%	397,911	99.03%	416,932	99.26%	427,584	99.28%	residents
- jo rezidente	2,175	0.56%	3,910	0.97%	3,112	0.74%	3,118	0.72%	non residents

\* Nuk perfshihet rivleresimi i valutes dhe garancite e brendshme

\* Forgn.Ex.Res.Evalu. and domestic guaranties are not includet

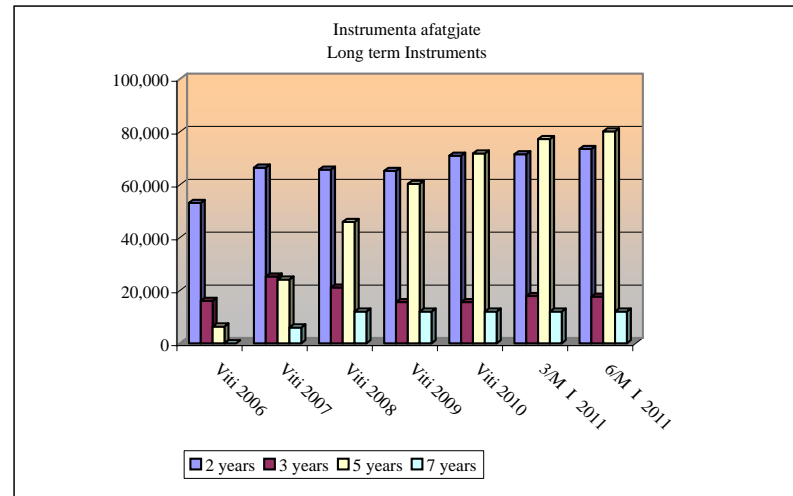
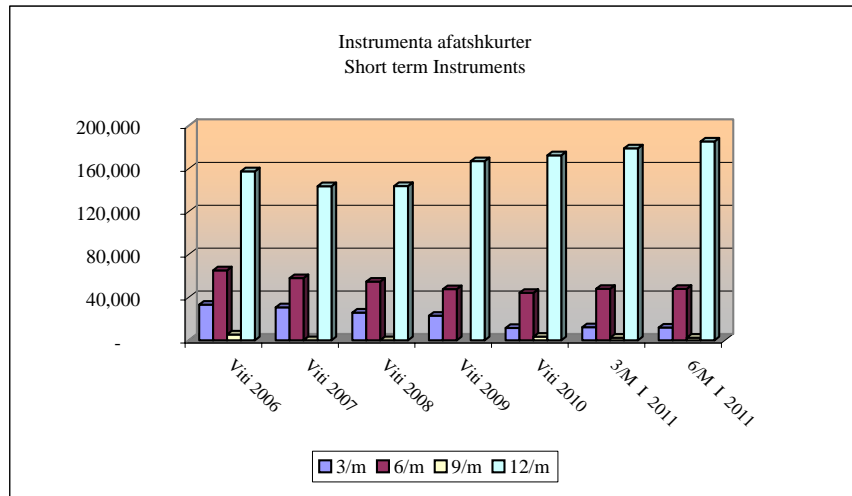


**Stoku i Borxhit te Brendshem sipas instrumentave**  
**Domestic Debt Stock by Instruments**



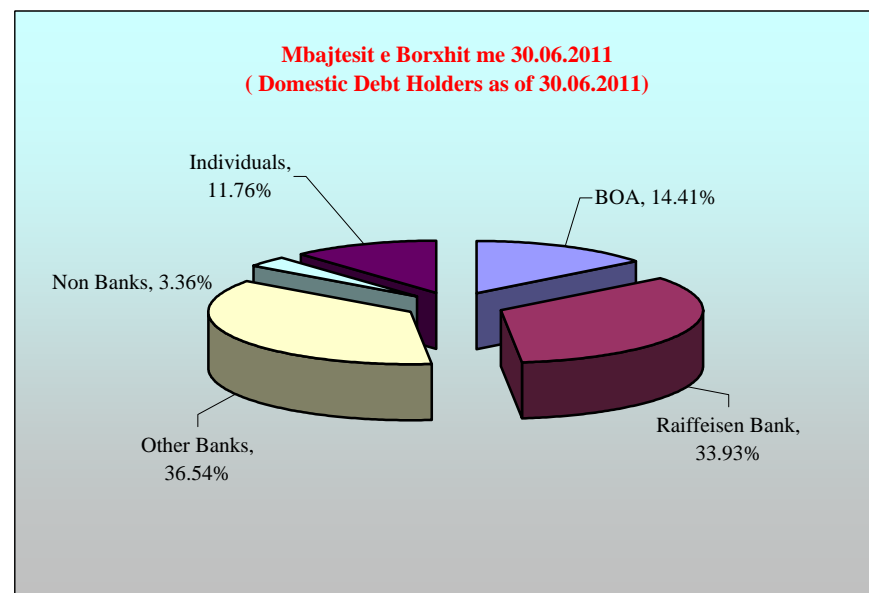
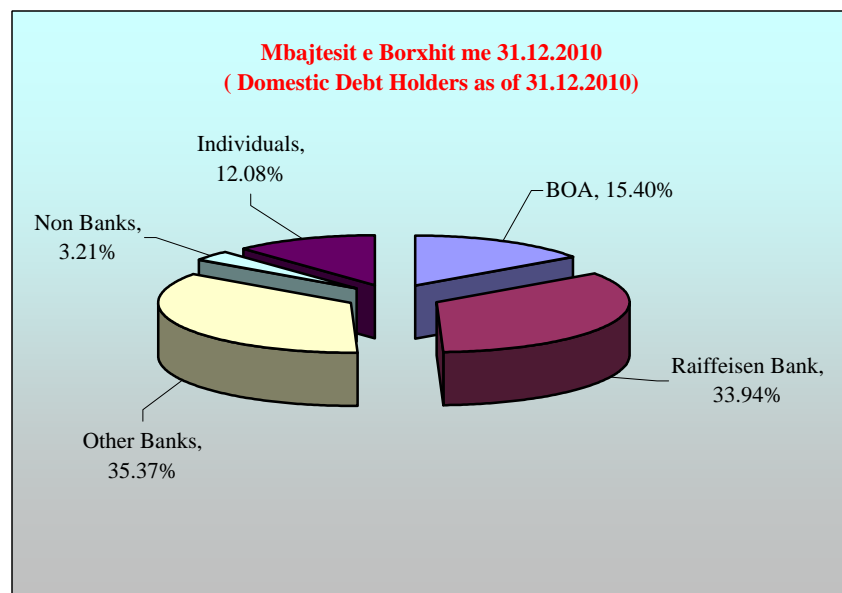
■ Treasury Bills 
 ■ Notes 
 ■ Foreign.Ex.Res.Evalu. 
 ■ Credit from C.Bank 
 ■ Guarantees

**Ecuria e instrumentave te borxhit te brendshem**  
**Evolution of Domestic Debt Instruments**



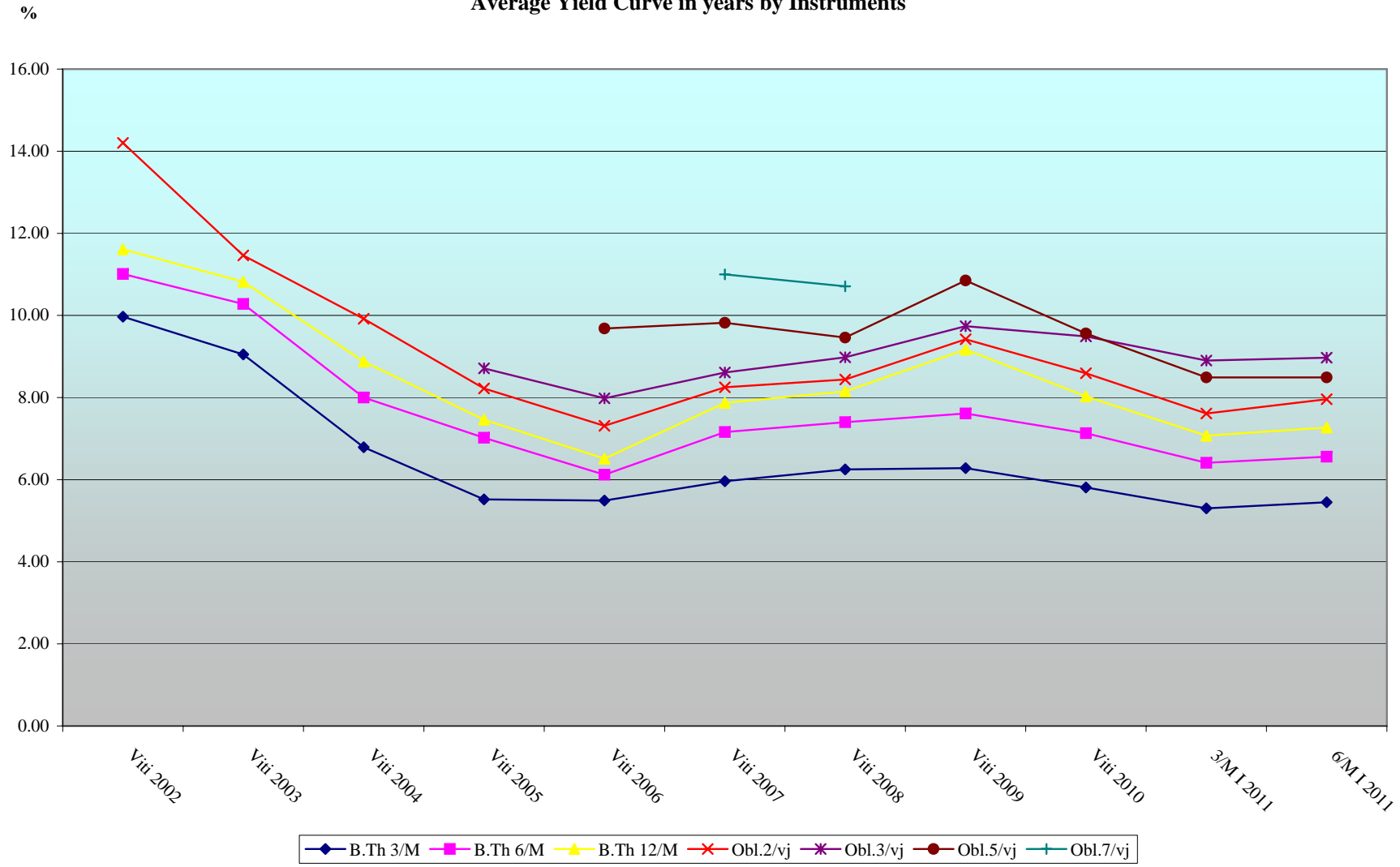
**Mbajtesit e Borxhit te Brendshem \* ne Çmim Blerje**  
**Domestic Debt Holders \* in Purchase Value**

	31.12.2008	31.12.2009	31.12.2010	31.03.2011	30.06.2011	
<b>BOA</b>	17.75%	17.66%	15.40%	14.78%	14.41%	<b>BOA</b>
<b>Raiffeisen Bank</b>	36.88%	34.57%	33.94%	33.71%	33.93%	<b>Banka Raiffeisen</b>
<b>Other Banks</b>	34.58%	34.33%	35.37%	36.52%	36.54%	<b>Bankat e tjera</b>
<b>Non Banks</b>	2.46%	2.68%	3.21%	3.28%	3.36%	<b>Jo Banka</b>
<b>Individuals</b>	8.33%	10.76%	12.08%	11.71%	11.76%	<b>Individet</b>

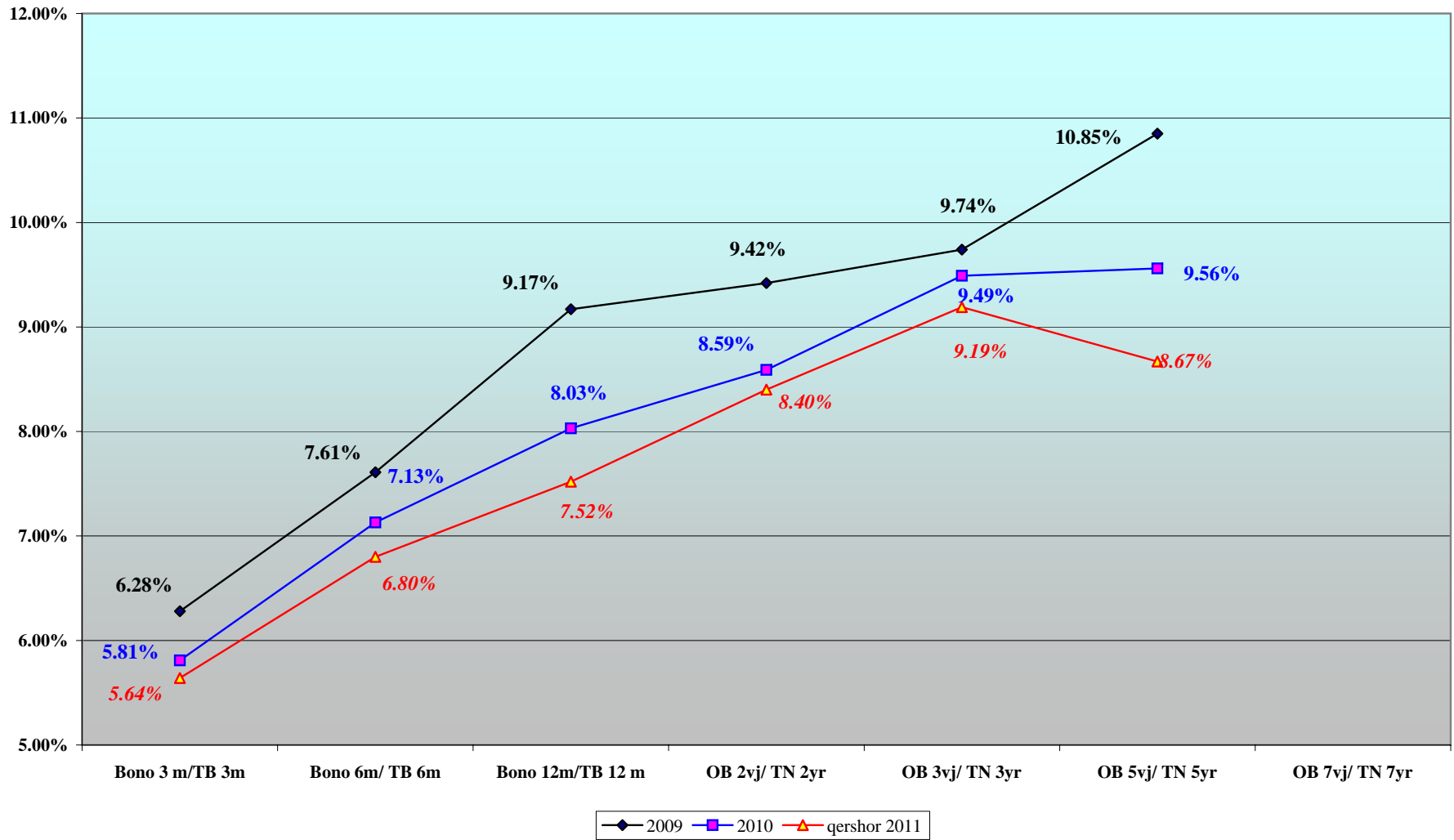


**\*) Nuk perfshihen Rivleresimi i valutes dhe Garancite.**  
**Foreing exchange reserves reevaluation and Guarantees are not included**

**Interesi mes. ponderuar i Letrave me vlere ne vite sipas Instrumentave**  
**Average Yield Curve in years by Instruments**



**Kurba e Yield-it te Letrave me Vlere**  
**Yield Curve Of Albanian Securities**



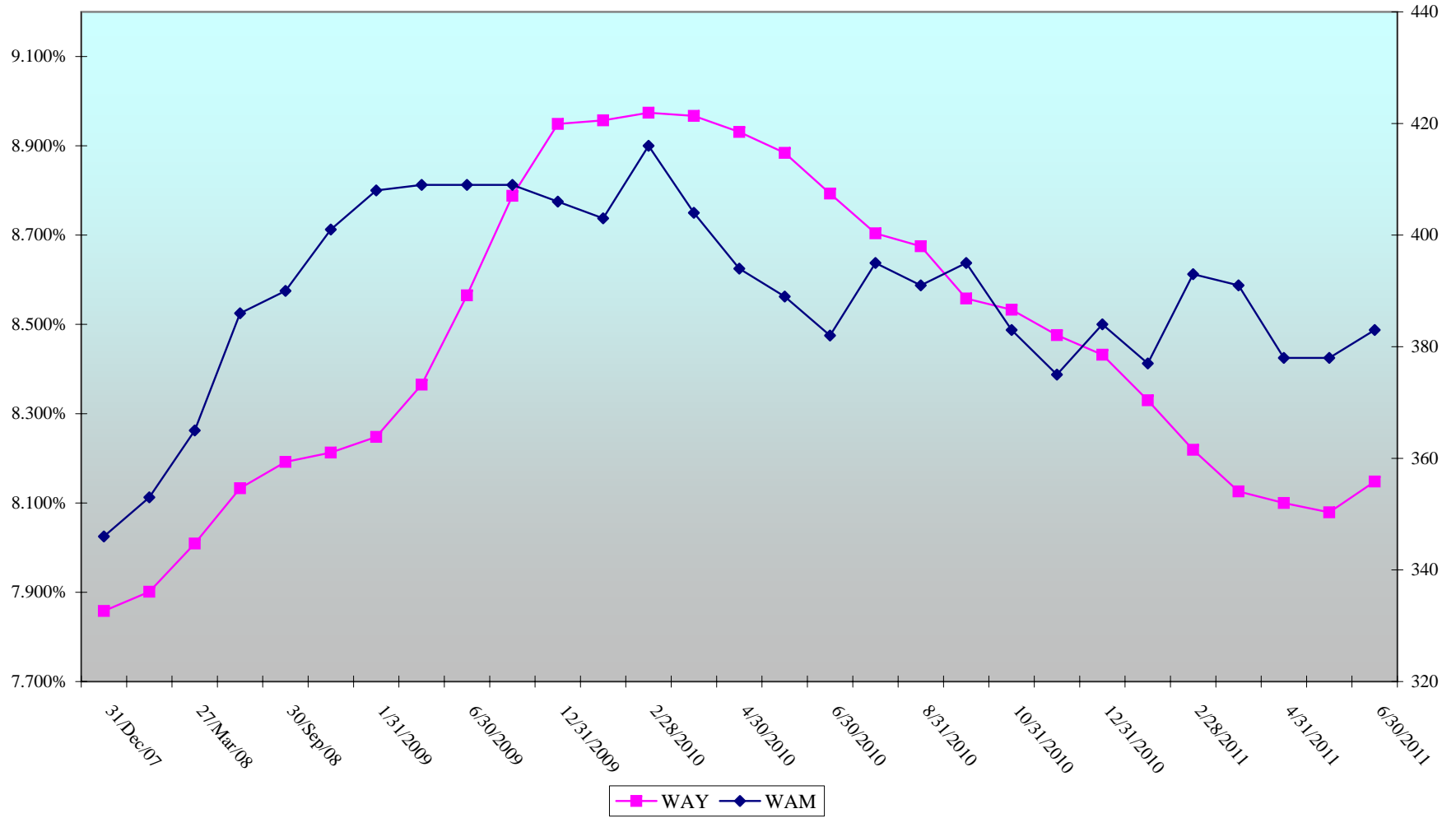
**Dite Mesatare ne Maturim & Yield-i Mesatar i Ponderuar**  
**Weighted Average Maturity & Weighted Average Yield**

	Average Maturity	Average Yield	Averg. Mat Pa BOA	Averg Yield Pa BOA
<b>31,12,2005</b>	<b>195</b>	<b>7.427</b>	<b>223</b>	<b>7.589</b>
<b>31,12,2006</b>	<b>242</b>	<b>6.744</b>	<b>284</b>	<b>6.807</b>
<b>31,12,2007</b>	<b>346</b>	<b>7.858</b>	<b>409</b>	<b>8.070</b>
<b>31.12.2008</b>	<b>401</b>	<b>8.213</b>	<b>470</b>	<b>8.461</b>
31.01.2009	408	8.248	475	8.507
29.02.2009	414	8.304	485	8.572
31.03.2009	409	8.365	485	8.647
30.04.2009	408	8.422	482	8.702
31.05.2009	416	8.511	492	8.791
30.06.2009	409	8.565	486	8.844
31.07.2009	419	8.656	494	8.950
31.08.2009	419	8.727	492	9.000
30.09.2009	409	8.788	481	9.068
31.10.2009	402	8.844	471	9.129
30.11.2009	406	8.922	475	9.207
<b>31.12.2009</b>	<b>406</b>	<b>8.949</b>	<b>471</b>	<b>9.236</b>
31.01.2010	403	8.957	465	9.255
28.02.2010	416	8.974	484	9.289
31.03.2010	404	8.967	472	9.286
30.04.2010	394	8.931	460	9.263
31.05.2010	389	8.884	456	9.218
30.06.2010	382	8.793	445	9.120
31.07.2010	395	8.704	456	9.030
31.08.2010	391	8.675	455	8.998
30.09.2010	395	8.558	460	8.878
31.10.2010	383	8.533	448	8.857
30.11.2010	375	8.476	442	8.797
<b>31.12.2010</b>	<b>384</b>	<b>8.432</b>	<b>438</b>	<b>8.705</b>
31.01.2011	377	8.33	425	8.603
28.02.2011	393	8.219	442	8.497
31.03.2011	391	8.126	438	8.397
30.04.2011	378	8.100	424	8.368
31.05.2011	378	8.079	425	8.339
30.06.2011	383	8.048	429	8.293

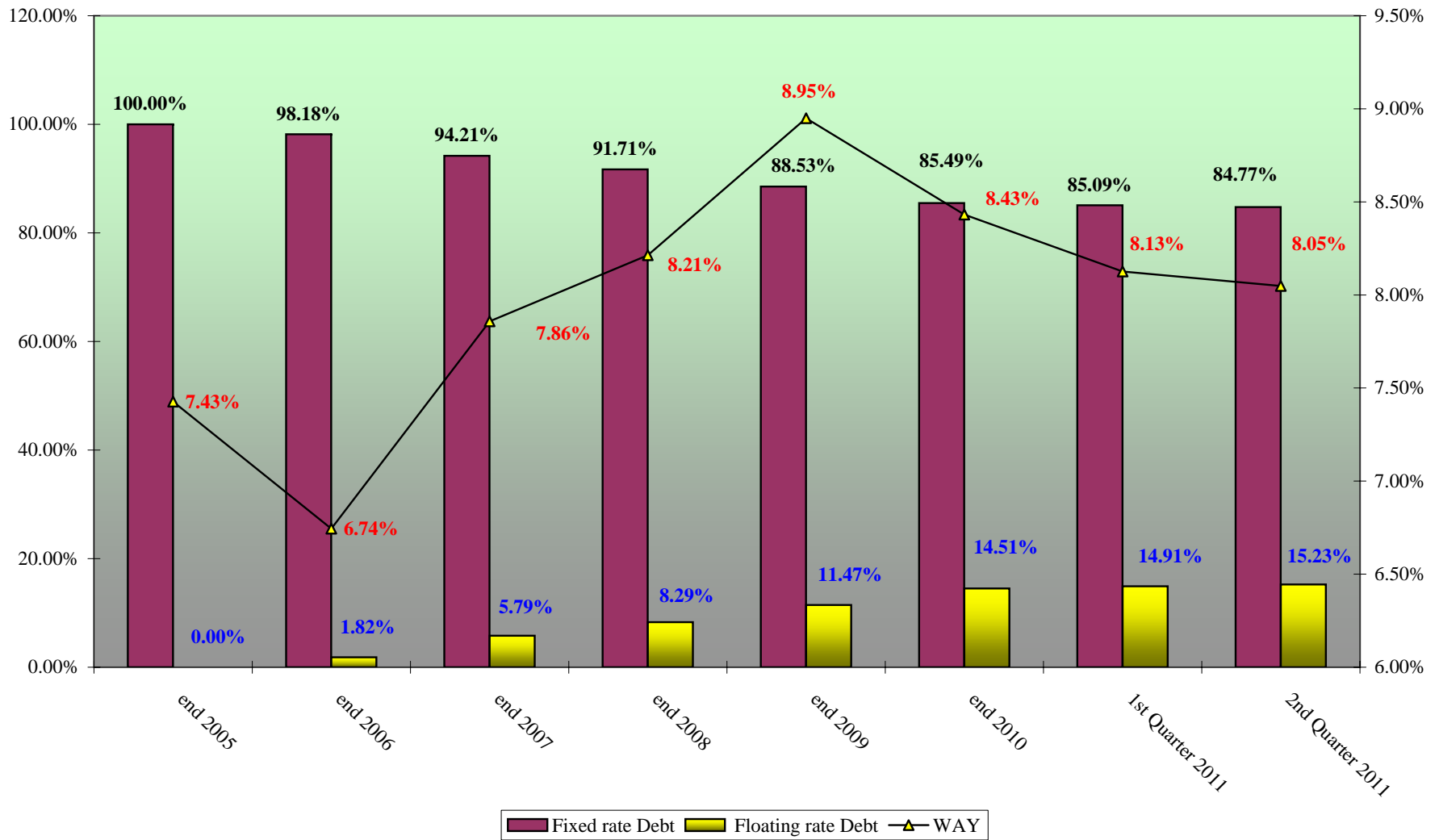
**Letrat me vlere te Qeverise**  
**Yield Mesatar & Dite Mesatare ne maturim**  
**Albanian Government Securities**  
**Weighted Average Yield & Weighted Average Maturity**

**Yield**

**Days**



**Ecuria e Struktures se Borxhit te Brendshem & Yield-I Mesatar i Ponderuar**  
**Evolution of Domestic Debt Structure and Weighted Average Yield**





**BORXHI I JASHEM\* AFATGJATE I SHQIPERISE  
TE DHENA PERMBLEDHESE**

**LONG-TERM EXTERNAL PUBLIC DEBT\*  
SUMMARIZED DATA**

(in million EUR)

Klasifikimi	Deri ne 31.12.2006	2007	2008	2009	2010	2011	GJITHSEJ TOTAL	Classification
	Up to 31.12.2006					Q2		
<b>I. TE DHENA KUMULATIVE</b>								<b>I. CUMULATIVE DATA (STOCK)</b>
<b>Borxhi Neto</b>	1,176.69	1,210.27	1,577.79	1,938.07	2,219.18	2,226.94	2,226.94	<b>Debt Outstanding Disbursed (DOD)</b>
<b>Terheqjet</b>	1,547.69	1,672.79	2,051.98	2,447.55	2,920.42	3,008.99	3,008.99	<b>Drawings</b>
<b>Pagesat e Borxhit</b>	394.72	458.43	534.41	641.41	950.28	999.95	999.95	<b>Debt Service</b>
-Principal	201.22	241.89	287.49	344.58	603.51	637.58	637.58	-Principal
-Interes	193.50	216.54	246.92	296.83	346.78	362.37	362.37	-Interest
<b>Borxhi i nenshkuar i paterhequr</b>	439.26	667.17	783.75	717.29	764.64	761.80	761.80	<b>Committed Undisbursed Balance (CUB)</b>
<b>II. TE DHENA VJETORE</b>								<b>II. ANNUAL DATA (FLOWS)</b>
<b>Terheqjet</b>	1,547.69	125.09	379.19	395.56	472.88	88.57	3,009.72	<b>Drawings</b>
<b>Pagesat e Borxhit</b>	394.72	63.71	75.98	107.00	308.88	49.67	999.95	<b>Debt Service</b>
-Principal	201.22	40.67	45.60	57.09	258.93	34.08	637.58	-Principal
-Interes	193.50	23.04	30.38	49.91	49.95	15.60	362.37	-Interest

\*) Përfshin borxhin shtetëror dhe shtetëror të garantuar (Tabela I.1 + Tabela I.2)

\*\*) Përfshihen të dhënat për periudhën 1991-2006

\*\*) Deri më 30.06.2011, të dhëna paraprake

Ne këto Tabela nuk përfshihen kredia e FMN-se

\*) Includes Central Government and Central Government Guaranteed debt (Table I.1 + Table I.2)

\*\*) Cumulative data (1991-2006)

\*\*) As of June. 30, 2011, data are preliminary

IMF credit is not included

**BORXHI I JASHEM I QEVERISE QENDRORE  
TE DHENA PERMBLEDHESE**

**CENTRAL GOVERNMENT EXTERNAL DEBT  
SUMMARIZED DATA**

(in million EUR)

Klasifikimi	Deri ne 31.12.2006 Up to 31.12.2006	2007	2008	2009	2010	2011	GJITHSEJ TOTAL	Classification
						Q2		
<b>I. TE DHENA KUMULATIVE</b>								
Borxhi Neto	969.29	985.26	1,322.58	1,646.33	1,931.84	1,945.48	1,945.48	<b>I. CUMULATIVE DATA (STOCK)</b>
Terheqjet	1,300.77	1,391.22	1,735.01	2,078.48	2,539.59	2,621.21	2,621.21	<b>Debt Outstanding Disbursed (DOD)</b>
<u>Pagesat e Borxhit</u>	<u>336.34</u>	<u>384.85</u>	<u>441.95</u>	<u>525.99</u>	<u>808.38</u>	<u>844.59</u>	<u>844.59</u>	<b>Drawings</b>
-Principal	168.56	200.56	234.72	276.77	516.05	540.15	540.15	<b>Debt Service</b>
-Interes	167.78	184.30	207.24	249.23	292.32	304.44	304.44	<b>-Principal</b>
Borxhi i nenshkruar i paterhequr	286.37	533.21	671.22	657.08	716.19	720.36	720.36	<b>-Interest</b>
<b>II. TE DHENA VJETORE</b>								
Terheqjet	1,301.50	90.45	343.79	343.46	461.12	81.62	2,621.94	<b>II. ANNUAL DATA (FLOWS)</b>
<u>Pagesat e Borxhit</u>	<u>336.34</u>	<u>48.51</u>	<u>57.10</u>	<u>84.04</u>	<u>282.38</u>	<u>36.22</u>	<u>844.59</u>	<b>Drawings</b>
-Principal	168.56	32.00	34.16	42.05	239.29	24.10	540.15	<b>Debt Service</b>
-Interes	167.78	16.51	22.94	41.99	43.10	12.12	304.44	<b>-Principal</b>
								<b>-Interest</b>

\*) Përfshihen të dhënat për periudhën 1991-2006

\*\*\*) Deri më 30.06.2011, të dhëna paraprake

Ne këto tabela nuk përfshihen kredia e FMN-se

\*) Cumulative data (1991-2006)

\*\*\*) As of June. 30, 2011, data are preliminary

IMF credit is not included

**BORXHI I JASHEM I GARANTUAR NGA QEVERIA QENDRORE  
TE DHENA PERMBLEDHESE**

**CENTRAL GOVERNMENT GUARANTEED DEBT  
SUMMARIZED DATA**

(in million EUR)

Klasifikimi	Deri ne 31.12.2006 Up to 31.12.2006	2007	2008	2009	2010	2011	GJITHSEJ TOTAL	Classification
						Q2		
<b>I. TE DHENA KUMULATIVE</b>								
Borxhi Neto	207.40	225.01	255.21	291.74	287.34	281.46	281.46	<b>I. CUMULATIVE DATA (STOCK)</b>
Terheqjet	246.93	281.57	316.97	369.07	380.83	387.78	387.78	Debt Outstanding Disbursed (DOD)
Pagesat e Borxhit	58.38	73.58	92.45	115.41	141.91	155.36	155.36	Drawings
-Principal	32.66	41.33	52.77	67.81	87.46	97.43	97.43	Debt Service
-Interes	25.72	32.24	39.68	47.60	54.45	57.93	57.93	
Borxhi i nenshkruar i paterhequr	152.90	133.97	112.53	60.22	48.45	41.44	41.44	Committed Undisbursed Balance (CUB)
<b>II. TE DHENA VJETORE</b>								
Terheqjet	246.93	34.64	35.40	52.10	11.76	6.95	387.78	<b>II. ANNUAL DATA (FLOWS)</b>
Pagesat e Borxhit	58.38	15.19	18.88	22.96	26.50	13.45	155.36	Drawings
-Principal	32.66	8.67	11.44	15.04	19.65	9.98	97.43	Debt Service
-Interes	25.72	6.52	7.44	7.92	6.85	3.48	57.93	

\*) Përfshihen të dhënat për periudhën 1991-2006

\*\*\*) Deri më 30.06.2011, të dhëna paraprake

\*) Cumulative data (1991-2006)

\*\*\*) As of June. 30, 2011, data are preliminary

**BORXHI I JASHEM\* AFATGJATE I SHQIPERISE**  
**TERHEQJET NE VITE NGA KREDITE E HUAJA SIPAS KREDITOREVE**  
**LONG-TERM EXTERNAL PUBLIC DEBT\***  
**DRAWINGS BY YEARS AND BY CREDITORS**

(in million EUR)

Sipas kreditoreve	Deri ne 31.12.2006 Up to 31.12.2006	2007	2008	2009	2010	2011		TOTALI	By Creditors
						Q1	Q2		
-Shumepalesh (I)	910.80	99.14	112.97	136.80	111.20	21.84	34.01	1,426.74	-Multilateral (I)
CEB	9.98	8.40	15.41	21.83	21.30	11.50	-	88.42	CEB
IBRD	-	3.85	8.08	4.94	2.32	0.18	0.61	19.97	IBRD
EC	9.00	-	-	-	-	-	-	9.00	EC
EBRD	80.96	14.67	24.93	32.24	14.38	2.99	12.15	182.30	EBRD
EIB	99.37	30.95	31.76	28.19	27.28	-	12.96	230.52	EIB
IDA	625.05	35.02	18.53	25.02	19.61	5.38	5.84	734.45	IDA
IDB	34.07	4.94	9.45	14.80	13.37	0.69	1.14	78.46	IDB
IFAD	29.73	0.73	1.51	1.41	2.17	0.19	0.51	36.25	IFAD
OPEC	22.64	0.58	3.30	8.36	10.76	0.92	0.81	47.37	OPEC
-Dypalesh (II)	545.41	25.95	36.22	66.17	63.20	9.82	22.90	769.67	-Bilateral (II)
AUSTRIA	4.51	-	-	5.03	2.46	0.89	2.94	15.82	AUSTRIA
BULLGARI	0.08	-	-	-	-	-	-	0.08	BULGARIA
ÇEKI	8.49	-	-	-	-	-	-	8.49	CZECH REP.
GREQI	49.35	-	-	-	-	-	-	49.35	GREECE
GJERMANI	112.22	13.53	10.74	24.67	15.04	2.81	7.38	186.39	GERMANY
HUNGARI	11.92	-	-	-	-	-	-	11.92	HUNGARY
ITALI	134.69	6.79	17.10	23.09	39.19	5.63	11.54	238.03	ITALY
JAPONI	52.71	-	-	-	2.29	0.05	0.67	55.72	JAPAN
JUGOSLLAVI	0.05	-	-	-	-	-	-	0.05	YUGOSLAVIA
MAQEDONI	0.98	-	-	-	-	-	-	0.98	MACEDONIA
TURQI	26.86	-	-	-	-	-	-	26.86	TURKEY
KUVAIT	37.49	1.64	3.04	2.46	2.50	0.36	0.38	47.87	KUWAIT
KINE	41.09	-	-	-	-	-	-	41.09	CHINA
KOREA	18.80	3.05	0.21	-	-	-	-	22.05	SOUTH KOREA
POLONI	0.92	-	-	-	-	-	-	0.92	POLAND
RUMANI	4.50	-	-	-	-	-	-	4.50	ROMANIA
SPANJE	-	0.95	0.74	5.02	-	-	-	6.71	SPAIN
SLOVAKI	4.30	-	-	-	-	-	-	4.30	SLOVAKIA
SUEDI	3.14	-	-	-	-	-	-	3.14	SWEDEN
NORVEGJI	28.86	-	-	-	-	-	-	28.86	NORWAY
HOLLANDE	-	-	4.40	5.90	1.72	0.07	-	12.09	NETHERLANDS
ZVICRA	4.47	-	-	-	-	-	-	4.47	SWITZERLAND
Kreditore Private (III)	-	-	230.00	192.60	298.49	-	-	721.09	Private Creditors (III)
Kreditore Private	-	-	230.00	192.60	-	-	-	422.60	Private Creditors
EUROBONDI	-	-	-	-	298.49	-	-	298.49	EUROBOND
-Klubi i Parisit (IV)	92.17	-	-	-	-	-	-	92.17	-Paris Club (IV)
AUSTRI	8.85	-	-	-	-	-	-	8.85	AUSTRIA
ANGLI	0.02	-	-	-	-	-	-	0.02	UNITED KINGDOM
DANIMARKE	0.12	-	-	-	-	-	-	0.12	DENMARK
FRANCE	21.85	-	-	-	-	-	-	21.85	FRANCE
GJERMANI	13.14	-	-	-	-	-	-	13.14	GERMANY
HOLLANDE	1.18	-	-	-	-	-	-	1.18	NETHERLANDS
ITALI	7.57	-	-	-	-	-	-	7.57	ITALY
JAPONI	0.20	-	-	-	-	-	-	0.20	JAPAN
RUSI	39.25	-	-	-	-	-	-	39.25	RUSSIA
<b>GJITHSEJ (I+II+III+IV)</b>	<b>1,548.38</b>	<b>125.09</b>	<b>379.19</b>	<b>395.56</b>	<b>472.88</b>	<b>31.65</b>	<b>56.91</b>	<b>3,009.68</b>	<b>TOTAL (I+II+III+IV)</b>

\*) Përfshin borxhin shtetëror dhe shtetëror të garantuar (Tabela II.1 + Tabela II.2)

Ne këto tabela nuk përfshihen kredia e FMN-se

\*\*) Deri më 30.06.2011, të dhëna paraprake

\*) Includes Central Government and Central Government Guaranteed debt

IMF credit is not included

\*\*) As of June. 30, 2011, data are preliminary

**BORXHI I JASHTEM I QEVERISE QENDRORE  
TERHEQJET NE VITE NGA KREDITE E HUAJA SIPAS KREDITOREVE**

**CENTRAL GOVERNMENT EXTERNAL DEBT  
DRAWINGS BY YEARS AND BY CREDITORS**

(in million EUR)

Sipas kreditoreve	Deri ne 31.12.2006 Up to 31.12.2006	2007	2008	2009	2010	2011		TOTALI	By Creditors
						Q1	Q2		
-Shumepalesh (I)	817.18	72.61	83.58	103.69	105.42	21.54	33.64	1,237.66	-Multilateral (I)
CEB	9.98	8.40	15.41	21.83	21.30	11.50		88.42	CEB
IBRD	-	3.85	8.08	4.94	2.32	0.18	0.61	19.97	IBRD
EC	9.00				-	-		9.00	EC
EBRD	16.99	7.14	10.54	10.14	8.60	2.70	11.78	67.87	EBRD
EIB	69.72	11.95	16.76	17.19	27.28	-	12.96	155.87	EIB
IDA	625.05	35.02	18.53	25.02	19.61	5.38	5.84	734.45	IDA
IDB	34.07	4.94	9.45	14.80	13.37	0.69	1.14	78.46	IDB
IFAD	29.73	0.73	1.51	1.41	2.17	0.19	0.51	36.25	IFAD
OPEC	22.64	0.58	3.30	8.36	10.76	0.92	0.81	47.37	OPEC
-Dypalesh (II)	392.15	17.84	30.21	47.17	57.21	8.88	17.55	571.02	-Bilateral (II)
AUSTRIA	4.51	-	-	5.03	2.46	0.89	2.94	15.82	AUSTRIA
BULLGARI	0.08	-	-	-	-	-	-	0.08	BULGARIA
ÇEKI	8.49	-	-	-	-	-	-	8.49	CZECH REP.
GREQI	40.54	-	-	-	-	-	-	40.54	GREECE
GJERMANI	69.20	9.43	6.08	5.68	9.16	2.81	2.88	105.23	GERMANY
HUNGARI	11.92	-	-	-	-	-	-	11.92	HUNGARY
ITALI	88.61	5.82	15.95	23.09	39.08	4.70	10.70	187.95	ITALY
JAPONI	16.15	-	-	-	2.29	0.05	0.67	19.16	JAPAN
JUGOSLLAVI	0.05	-	-	-	-	-	-	0.05	YUGOSLAVIA
MAQEDONI	0.98	-	-	-	-	-	-	0.98	MACEDONIA
TURQI	26.86	-	-	-	-	-	-	26.86	TURKEY
KUVAIT	37.49	1.64	3.04	2.46	2.50	0.36	0.38	47.87	KUWAIT
KINE	41.09	-	-	-	-	-	-	41.09	CHINA
POLONI	0.92	-	-	-	-	-	-	0.92	POLAND
RUMANI	4.50	-	-	-	-	-	-	4.50	ROMANIA
SPANJE	-	0.95	0.74	5.02	-	-	-	6.71	SPAIN
SLOVAKI	4.30	-	-	-	-	-	-	4.30	SLOVAKIA
SUEDI	3.14	-	-	-	-	-	-	3.14	SWEDEN
NORVEGJI	28.86	-	-	-	-	-	-	28.86	NORWAY
HOLLANDE	-	-	4.40	5.90	1.72	0.07	-	12.09	NETHERLANDS
ZVICRA	4.47	-	-	-	-	-	-	4.47	SWITZERLAND
Kreditor Privat (III)	-	-	230.00	192.60	298.49	-	-	721.09	Private Creditors (III)
Kreditor Private kredi	-	-	230.00	192.60	-	-	-	422.60	Private Creditors Loans
EUROBONDI	-	-	-	-	298.49	-	-	298.49	EUROBOND
-Klubi i Parisit (IV)	92.17	-	-	-	-	-	-	92.17	-Paris Club (IV)
AUSTRI	8.85	-	-	-	-	-	-	8.85	AUSTRIA
ANGLI	0.02	-	-	-	-	-	-	0.02	UNITED KINGDOM
DANIMARKE	0.12	-	-	-	-	-	-	0.12	DENMARK
FRANCE	21.85	-	-	-	-	-	-	21.85	FRANCE
GJERMANI	13.14	-	-	-	-	-	-	13.14	GERMANY
HOLLANDE	1.18	-	-	-	-	-	-	1.18	NETHERLANDS
ITALI	7.57	-	-	-	-	-	-	7.57	ITALY
JAPONI	0.20	-	-	-	-	-	-	0.20	JAPAN
RUSI	39.25	-	-	-	-	-	-	39.25	RUSSIA
<b>GJITHSEJ (I+II+III+IV)</b>	<b>1,301.50</b>	<b>90.45</b>	<b>343.79</b>	<b>343.46</b>	<b>461.12</b>	<b>30.43</b>	<b>51.19</b>	<b>2,621.94</b>	<b>TOTAL (I+II+III+IV)</b>

Ne kete tabelë nuk përfshihen kredia e FMN-se  
\*\*) Deri me 30.06.2011, të dhëna paraprake

IMF credit is not included  
\*\*) As of June. 30, 2011, data are preliminary

**BORXHI I JASHEM I GARANTUAR NGA QEVERIA QENDRORE  
TERHEQJET NE VITE NGA KREDITE E HUAJA SIPAS KREDITOREVE**

**CENTRAL GOVERNMENT GUARANTEED DEBT  
DRAWINGS BY YEARS AND BY CREDITORS**

(in million EUR)

Sipas kreditoreve	Deri ne 31.12.2006 Up to 31.12.2006	2007	2008	2009	2010	2011		GJITHSEJ TOTAL	By Creditors
						Q1	Q2		
-Shumepalesh (I)	93.62	26.53	29.39	33.10	5.77	0.29	0.37	189.08	-Multilateral (I)
EBRD	63.97	7.53	14.39	22.10	5.77	0.29	0.37	114.43	EBRD
EIB	29.65	19.00	15.00	11.00	-	-	-	74.65	EIB
-Dypalesh (II)	153.26	8.11	6.01	18.99	5.99	0.93	5.35	198.65	-Bilateral (II)
GJERMANI	43.02	4.10	4.66	18.99	5.88	-	4.51	81.16	GERMANY
GREQI	8.80	-	-	-	-	-	-	8.80	GREECE
ITALI	46.08	0.96	1.15	-	0.11	0.93	0.84	50.08	ITALY
JAPONI	36.56	-	-	-	-	-	-	36.56	JAPAN
KOREA	18.80	3.05	0.21	-	-	-	-	22.05	SOUTH KOREA
-Klubi Parisit (III)	0.05	-	-	-	-	-	-	0.05	-Paris Club (III)
JAPONI	0.05	-	-	-	-	-	-	0.05	JAPAN
<b>GJITHSEJ (I+II+III)</b>	<b>246.93</b>	<b>34.64</b>	<b>35.40</b>	<b>52.10</b>	<b>11.76</b>	<b>1.23</b>	<b>5.72</b>	<b>387.78</b>	<b>TOTAL (I+II+III)</b>

\*\*) Deri me 30.06.2011, te dhena paraprake

\*\*) As of June. 30, 2011, data are preliminary

**BORXHI I JASHEM\* AFATGJATE I SHQIPERISE  
TERHEQJET NE VITE SIPAS SEKTOREVE EKONOMIKE**

**LONG-TERM EXTERNAL PUBLIC DEBT\*  
DRAWINGS BY ECONOMIC SECTORS**

(in million EUR)

Sipas sektoreve ekonomike	Deri ne 31.12.2006 Up to 31.12.2006	2007	2008	2009	2010	2011		GJITHSEJ TOTAL	By Economic Sectors
						Q1	Q2		
ADMINISTRATA SHETETERORE	31.16	1.72	-	-	-	-	-	32.88	Public Administration
ARESIMI	26.60	9.72	9.72	4.13	4.10	-	4.23	58.50	Education
BILANCI I PAGESAVE	18.35	-	-	-	-	-	-	18.35	Balance of Payment
BUJQESI, UJITJE	114.76	8.54	10.03	6.28	2.79	0.26	0.71	143.37	Agriculture-Irrigation
ENERGJETIKE	261.88	38.89	44.80	85.76	39.96	4.84	15.93	492.06	Energy
IMPORT MALLRASH DHE PAJISJESH	54.74	-	-	-	-	-	-	54.74	Import of Goods and Services
INDUSTRI E LEHTE	2.56	-	-	-	-	-	-	2.56	Light Industry
INFRASTRUKTURE URBANE DHE RURALE	45.52	3.25	7.21	4.78	1.96	1.45	0.27	64.44	Urban and Rural Infrastructure
KLUBI I PARISIT DHE RISKEDULIME TE TJERA	207.04	-	-	-	-	-	-	207.04	Paris Club & Other Rescheduling
MBESHETJE PER BUXHETIN	234.58	7.34	-	192.60	298.49	-	-	733.01	Budgetary Support
MBROJTJA	8.90	-	-	-	1.83	-	0.37	11.10	Defence
MBROJTJA E MJEDISIT	1.39	1.13	0.26	0.25	1.02	0.19	0.13	4.37	Environmental Protection
PYJE	7.22	-	-	-	-	-	-	7.22	Forestry
SHENDETESI	39.58	6.70	2.73	15.31	8.44	2.52	2.93	78.21	Health
SIGURIME SHOQ./TREGU I PUNES	11.48	1.72	2.83	0.17	0.31	0.36	0.16	17.02	Social Safety/Labor Market
STREHIMI	14.07	-	2.19	5.03	4.10	1.00	-	26.39	Housing
TELEKOMUNIKACION	14.69	-	-	-	-	-	-	14.69	Telecommunication
TRANSPORT	236.96	29.88	278.46	61.27	71.38	16.63	24.39	718.97	Transport
TRANSPORTI AJROR	23.64	-	-	-	-	-	-	23.64	Air Transport
TRANSPORTI HEKURUDHOR	3.10	-	-	-	-	-	-	3.10	Rail Transport
UJESJELLESA/KANALIZIME	90.73	14.83	13.80	17.59	22.15	3.74	6.94	169.77	Water Supply and Sewerige
ZHVILL. SEK.PRIVAT	41.45	0.65	5.13	0.00	11.23	0.34	0.55	59.36	Enterprise Sector Development
TE TJERA	26.53	-	-	-	-	-	-	26.53	Other
ZHVILLIMI RURAL	31.50	0.73	2.03	2.41	5.11	0.32	0.92	43.02	Rural Development
<b>GJITHSEJ</b>	<b>1,548.42</b>	<b>125.09</b>	<b>379.20</b>	<b>395.56</b>	<b>472.88</b>	<b>31.65</b>	<b>57.53</b>	<b>3,010.34</b>	<b>TOTAL</b>

\*) Përfshin borxhin shtetëror dhe shtetëror të garantuar  
Ne këto tabele nuk përfshihet kredia e FMN-se

\*\*) Deri më 30.06.2011, të dhëna paraprake

\*) Includes Central Government and Central Government Guaranteed debt  
IMF credit is not included

\*\*) As of June. 30, 2011, data are preliminary

**BORXHI I JASHEM\* AFATGJATE I SHQIPERISE  
BORXHI NETO SIPAS KREDITOREVE**

**LONG-TERM EXTERNAL PUBLIC DEBT\*  
DEBT OUTSTANDING DISBURSED BY CREDITORS**

(in million EUR)

Sipas kreditoreve	31.12.2007	31.12.2008	31.12.2009	2010***	2011	By Creditors
-Shumepalesh (I)	810.94	919.37	1,017.81	1,139.84	1,142.53	-Multilateral (I)
CEB	17.59	33.17	54.84	76.17	87.12	CEB
EBRD	61.57	77.86	97.94	98.66	105.94	EBRD
EC	9.00	9.00	9.00	9.00	9.00	EC
EIB	106.70	134.17	155.55	175.49	184.73	EIB
IBRD	3.85	11.93	16.88	19.20	19.83	IBRD
IDA	549.79	577.31	587.69	636.83	615.60	IDA
IDB	28.40	37.85	50.78	65.85	63.94	IDB
IFAD	24.36	26.03	26.62	29.68	28.67	IFAD
OPEC	9.67	12.05	18.51	28.97	27.70	OPEC
-Dypalesh (II)	323.41	357.67	408.72	466.11	482.09	-Bilateral (II)
GJERMANI	107.82	116.96	139.15	147.68	154.56	GERMANY
GREQI	13.19	12.94	12.69	12.44	12.31	GREECE
AUSTRI			5.03	7.49	11.32	AUSTRIA
ITALI	117.64	129.86	147.79	181.66	195.85	ITALY
JAPONI	36.39	45.05	41.57	48.98	45.04	JAPAN
KINE	1.26	1.32	1.29	1.39	1.28	CHINA
KUVAIT	21.79	23.73	23.03	26.75	24.83	KUWAIT
NORVEGJI	7.56	6.14	4.29	2.78	1.71	NORWAY
HOLLANDE		4.40	9.98	10.60	10.04	NETHERLANDS
SPANJE	0.95	1.74	6.46	6.97	6.43	SPAIN
KOREA	16.81	15.52	17.44	19.38	18.73	SOUTH KOREA
Kreditore private (III)		230.00	422.60	530.00	530.00	Private Creditors (III)
KREDITORE PRIVATE		230.00	422.60	230.00	230.00	PRIVATE CREDITORS
EUROBONDI				300.00	300.00	EUROBOND
-Borxhi i riskedeluar (IV) (A+B)	75.93	70.75	88.94	83.23	72.32	-Rescheduled Debt (IV) (A+B)
-Klubi i Parisit (A)	27.36	27.21	25.60	26.58	24.11	-Paris Club (A)
GJERMANI	1.00	0.33	-	-	-	GERMANY
ITALI	2.75	2.66	2.49	2.41	2.25	ITALY
RUSI	23.61	24.22	23.11	24.17	21.86	RUSSIA
-Te tjere (B)	48.57	43.54	63.34	56.66	48.21	-Others (B)
TURQI	12.64	11.65	9.87	9.01	7.55	TURKEY
GREQI			27.70	25.71	21.77	GREECE
KINE	17.96	16.41	13.75	12.37	10.26	CHINA
HUNGARI	5.78	5.04	3.94	3.19	2.94	HUNGARY
GJERMANI	2.21	1.47	0.74	-	-	GERMANY
RUMANIA	2.76	2.50	2.07	1.82	1.49	ROMANIA
SLLOVAKI	2.41	2.16	1.76	1.52	1.40	SLOVAK REP.
ÇEKI	4.82	4.31	3.51	3.03	2.80	CZECH REP.
<b>GJITHSEJ (I+II+III+IV)</b>	<b>1,210.27</b>	<b>1,577.79</b>	<b>1,938.07</b>	<b>2,219.18</b>	<b>2,226.94</b>	<b>TOTAL (I+II+III+IV)</b>

\*) Perfshin borxhin shtetedor dhe shtetedor te garantuar  
Ne kete tabele nuk perfshihet kredia e FMN-se

\*\*) Deri me 30.06.2011, te dhena paraprake

\*\*\*Te dhena te rishikuara

\*) Includes Central Government and Central Government Guaranteed debt  
IMF credit is not included

\*\*) As of June. 30, 2011, data are preliminary

\*\*\*Revised data



**BORXHI I JASHEM I QEVERISE QENDRORE  
BORXHI NETO SIPAS KREDITOREVE**

**CENTRAL GOVERNMENT EXTERNAL DEBT  
DEBT OUTSTANDING DISBURSED BY CREDITORS**

(in million EUR)

Sipas kreditoreve	31.12.2007	31.12.2008	31.12.2009	2010***	2011	By Creditors
-Shumepalesh (I)	725.89	812.87	889.20	1,017.56	1,025.80	-Multilateral (I)
CEB	17.59	33.17	54.84	76.17	87.12	CEB
EBRD	21.29	30.42	37.78	43.22	55.25	EBRD
EC	9.00	9.00	9.00	9.00	9.00	EC
EIB	61.92	75.12	87.10	108.65	118.69	EIB
IBRD	3.85	11.93	16.88	19.20	19.83	IBRD
IDA	549.79	577.31	587.69	636.83	615.60	IDA
IDB	28.40	37.85	50.78	65.85	63.94	IDB
IFAD	24.36	26.03	26.62	29.68	28.67	IFAD
OPEC	9.67	12.05	18.51	28.97	27.70	OPEC
-Dypalesh (II)	183.45	208.95	245.60	301.06	317.36	-Bilateral (II)
GJERMANI	66.06	71.17	76.66	83.27	87.64	GERMANY
GREQI	4.39	4.14	3.89	3.64	3.51	GREECE
AUSTRI	-	-	5.03	7.49	11.32	AUSTRIA
ITALI	70.98	83.41	103.14	142.52	155.72	ITALY
JAPONI	10.46	12.89	11.83	15.65	14.89	JAPAN
KINE	1.26	1.32	1.29	1.39	1.28	CHINA
KUVAIT	21.79	23.73	23.03	26.75	24.83	KUWAIT
NORVEGJI	7.56	6.14	4.29	2.78	1.71	NORWAY
HOLLAND	-	4.40	9.98	10.60	10.04	NETHERLANDS
SPANJA	0.95	1.74	6.46	6.97	6.43	SPAIN
Kreditore Private (III)		230.00	422.60	530.00	530.00	Private Creditors(III)
KREDITORE PRIVATE		230.00	422.60	230.00	230.00	PRIVATE CREDITORS
EUROBONDI				300.00	300.00	EUROBOND
-Borxhi i riskedeluar (IV) (A+B)	75.93	70.75	88.94	83.23	72.32	-Rescheduled Debt (IV) (A+B)
-Klubi i Parisit (A)	27.36	27.21	25.60	26.58	24.11	-Paris Club (A)
GJERMANI	1.00	0.33	-	-	-	GERMANY
ITALI	2.75	2.66	2.49	2.41	2.25	ITALY
RUSI	23.61	24.22	23.11	24.17	21.86	RUSSIA
-Te tjere (B)	48.57	43.54	63.34	56.66	48.21	-Others (B)
TURQI	12.64	11.65	9.87	9.01	7.55	TURKEY
GREQI	-	-	27.70	25.71	21.77	GREECE
KINE	17.96	16.41	13.75	12.37	10.26	CHINA
HUNGARI	5.78	5.04	3.94	3.19	2.94	HUNGARY
GJERMANI	2.21	1.47	0.74	-	-	GERMANY
RUMANIA	2.76	2.50	2.07	1.82	1.49	ROMANIA
SLLOVAKI	2.41	2.16	1.76	1.52	1.40	SLOVAK REP.
ÇEKI	4.82	4.31	3.51	3.03	2.80	CZECH REP.
<b>GJITHSEJ (I+II+III+IV)</b>	<b>985.26</b>	<b>1,322.58</b>	<b>1,646.33</b>	<b>1,931.84</b>	<b>1,945.48</b>	<b>TOTAL (I+II+III+IV)</b>

Ne kete table nuk perfishihet kredia e FMN-se

\*\* Deri me 30.06.2011, te dhena paraprake

\*\*\*Te dhena te rishikuara

IMF credit is not included

\*\* As of June. 30, 2011, data are preliminary

\*\*\*Revised data

**BORXHI I JASHEM I GARANTUAR NGA QEVERIA QENDRORE  
BORXHI NETO SIPAS KREDITOREVE**

**CENTRAL GOVERNMENT GUARANTEED DEBT  
DEBT OUTSTANDING DISBURSED BY CREDITORS**

(in million EUR)

Sipas kreditoreve	31.12.2007	31.12.2008	31.12.2009	2010	2011	By Creditors
-Shumepalesh (I)	85.06	106.50	128.61	122.28	116.73	-Multilateral (I)
EBRD	40.28	47.44	60.16	55.44	50.69	EBRD
EIB	44.78	59.06	68.45	66.84	66.04	EIB
-Dypalesh (II)	139.95	148.72	163.13	165.06	164.73	-Bilateral (II)
GJERMANI	41.76	45.79	62.49	64.40	66.92	GERMANY
GREQI	8.80	8.80	8.80	8.80	8.80	GREECE
ITALI	46.66	46.45	44.65	39.14	40.13	ITALY
JAPONI	25.92	32.15	29.74	33.34	30.15	JAPAN
KOREA	16.81	15.52	17.44	19.38	18.73	SOUTH KOREA
<b>GJITHSEJ (I+II)</b>	<b>225.01</b>	<b>255.21</b>	<b>291.74</b>	<b>287.34</b>	<b>281.46</b>	<b>TOTAL (I+II)</b>

\*\*) Deri me 30.06.2011, te dhena paraprake

\*\*) As of June. 30, 2011, data are preliminary

**BORXHI I JASHEM\* AFATGJATE I SHQIPERISE**  
**BORXHI NETO SIPAS MONEDHAVE**

**LONG-TERM EXTERNAL PUBLIC DEBT\***  
**DOD BY CURRENCY**

(in million EUR)

Monedha Currency	2009		2010		2011	
	Amount	%	Amount	%	Amount	%
ACU	50.78	2.62	65.85	2.97	63.94	2.87%
EUR	1,069.87	55.20	1,265.85	57.04	1,318.54	59.21%
JPY	41.56	2.14	48.98	2.21	45.04	2.02%
KWD	23.03	1.19	26.74	1.20	24.83	1.11%
KRW	17.44	0.90	19.38	0.87	18.73	0.84%
SDR	614.31	31.70	666.51	30.03	644.27	28.93%
USD	121.07	6.25	125.99	5.68	111.62	5.01%
<b>TOTAL</b>	<b>1,938.06</b>	<b>100.00</b>	<b>2,219.29</b>	<b>100.00</b>	<b>2,226.96</b>	<b>100.00%</b>

\*) Përfshin borxhin e jashtëm shtetëror dhe shtetëror të garantuar

\*\*) Deri më 30.06.2011, të dhëna paraprake

Nuk përfshihet kredia e FMN-se

\*) Includes external public and external publicly guaranteed debt

\*\*) As of June. 30, 2011, data are preliminary

IMF credit is not included

**BORXHI I JASHEM\* AFATGJATE I SHQIPERISE  
PJESA E PATERHEQUR E KREDIVE**

**LONG-TERM EXTERNAL PUBLIC DEBT\*  
COMMITTED UNDISBURSED BALANCE**

(in million EUR)

<b>Sipas kreditoreve</b>	<b>2007</b>	<b>2008</b>	<b>2009</b>	<b>2010</b>	<b>2011</b>	<b>By Creditors</b>
<b>-Shumepalesh (I)</b>	<b>399.77</b>	<b>430.38</b>	<b>405.41</b>	<b>391.74</b>	<b>377.00</b>	<b>-Multilateral (I)</b>
CEB	38.24	38.85	62.01	40.75	29.00	CEB
EBRD	64.27	75.20	77.95	63.58	99.00	EBRD
EIB	117.83	109.06	80.88	103.60	91.00	EIB
IBRD	31.05	22.97	23.50	21.45	20.00	IBRD
IDA	102.65	122.26	100.27	85.99	71.00	IDA
IDB	22.73	42.98	34.97	54.10	49.00	IDB
IFAD	5.49	4.11	9.02	7.40	6.00	IFAD
OPEC	17.51	14.96	16.82	14.89	12.00	OPEC
<b>-Dypalesh (II)</b>	<b>267.45</b>	<b>354.11</b>	<b>311.88</b>	<b>372.90</b>	<b>384.80</b>	<b>-Bilateral (II)</b>
GJERMANI	58.20	54.96	49.34	125.30	161.44	GERMANY
GREQI			-	-	-	GREECE
ITALI	198.38	181.23	157.98	118.79	101.00	ITALY
JAPONI	-	87.55	85.88	100.00	93.00	JAPAN
KUVAIT	5.30	17.47	14.07	13.42	12.00	KUWAIT
AUSTRI			2.46	5.96	9.00	AUSTRIA
ArabiaSaudit				9.00	8.00	
HOLLANDE		8.05	2.15	0.43	0.36	NETHERLANDS
SPANJA	5.38	4.87	-	-	-	SPAIN
KOREA	0.19	-				SOUTH KOREA
<b>GJITHSEJ (I+II)</b>	<b>667.21</b>	<b>784.49</b>	<b>717.29</b>	<b>764.64</b>	<b>761.80</b>	<b>TOTAL (I+II)</b>

\*) Perfshin borxhin shtetedor dhe shtetedor te garantuar

\*\*) Deri me 30.06.2011, te dhena paraprake

Ne kete tabele nuk perfshihet kredia e FMN-se

\*) Includes Central Government and Central Government Guaranteed debt

\*\*) As of June. 30, 2011, data are preliminary

IMF credit is not included

**BORXHI I JASHEM I QEVERISE QENDRORE  
PJESA E PATERHEQUR E KREDIVE**

**CENTRAL GOVERNMENT EXTERNAL DEBT  
COMMITTED UNDISBURSED BALANCE**

(in million EUR)

<b>Sipas kreditoreve</b>	<b>2007</b>	<b>2008</b>	<b>2009</b>	<b>2010</b>	<b>2011</b>	<b>By Creditors</b>
<b>-Shumepalesh (I)</b>	<b>316.96</b>	<b>363.11</b>	<b>371.24</b>	<b>363.35</b>	<b>349.00</b>	<b>-Multilateral (I)</b>
CEB	38.24	38.85	62.01	40.75	29.00	CEB
EBRD	7.46	18.92	43.79	35.18	71.00	EBRD
EIB	91.83	98.06	80.88	103.60	91.00	EIB
IBRD	31.05	22.97	23.50	21.45	20.00	IBRD
IDA	102.65	122.26	100.27	85.99	71.00	IDA
IDB	22.73	42.98	34.97	54.10	49.00	IDB
IFAD	5.49	4.11	9.02	7.40	6.00	IFAD
OPEC	17.51	14.96	16.82	14.89	12.00	OPEC
<b>-Dypalesh (II)</b>	<b>216.36</b>	<b>309.07</b>	<b>285.83</b>	<b>352.84</b>	<b>371.36</b>	<b>-Bilateral (II)</b>
GJERMANI	23.72	25.14	38.52	120.36	161.00	GERMANY
GREQI	-	-	-	-	-	GREECE
ITALI	181.96	166.01	142.76	103.68	88.00	ITALY
JAPONI	-	87.55	85.88	100.00	93.00	JAPAN
KUVAIT	5.30	17.47	14.07	13.42	12.00	KUWAIT
AUSTRI	-	-	2.46	5.96	9.00	AUSTRIA
HOLLANDE	-	8.05	2.15	0.43	0.36	NEITHERLANDS
ArabiaSaudit	-	-	-	9.00	8.00	ArabiaSaudit
SPANJA	5.38	4.87	-	-	-	SPAIN
<b>GJITHSEJ (I+II)</b>	<b>533.32</b>	<b>672.18</b>	<b>657.08</b>	<b>716.19</b>	<b>720.36</b>	<b>TOTAL (I+II)</b>

\*\*) Deri me 30.06.2011, te dhena paraprake  
Ne kete tabelë nuk përfshihet kredia e FMN-se

\*\*) As of June. 30, 2011, data are preliminary  
IMF credit is not included

**BORXHI I JASHEM I GARANTUAR NGA QEVERIA QENDRORE  
PJESA E PATERHEQUR E KREDIVE**

**CENTRAL GOVERNMENT GUARANTEED DEBT  
COMMITTED UNDISBURSED BALANCE**

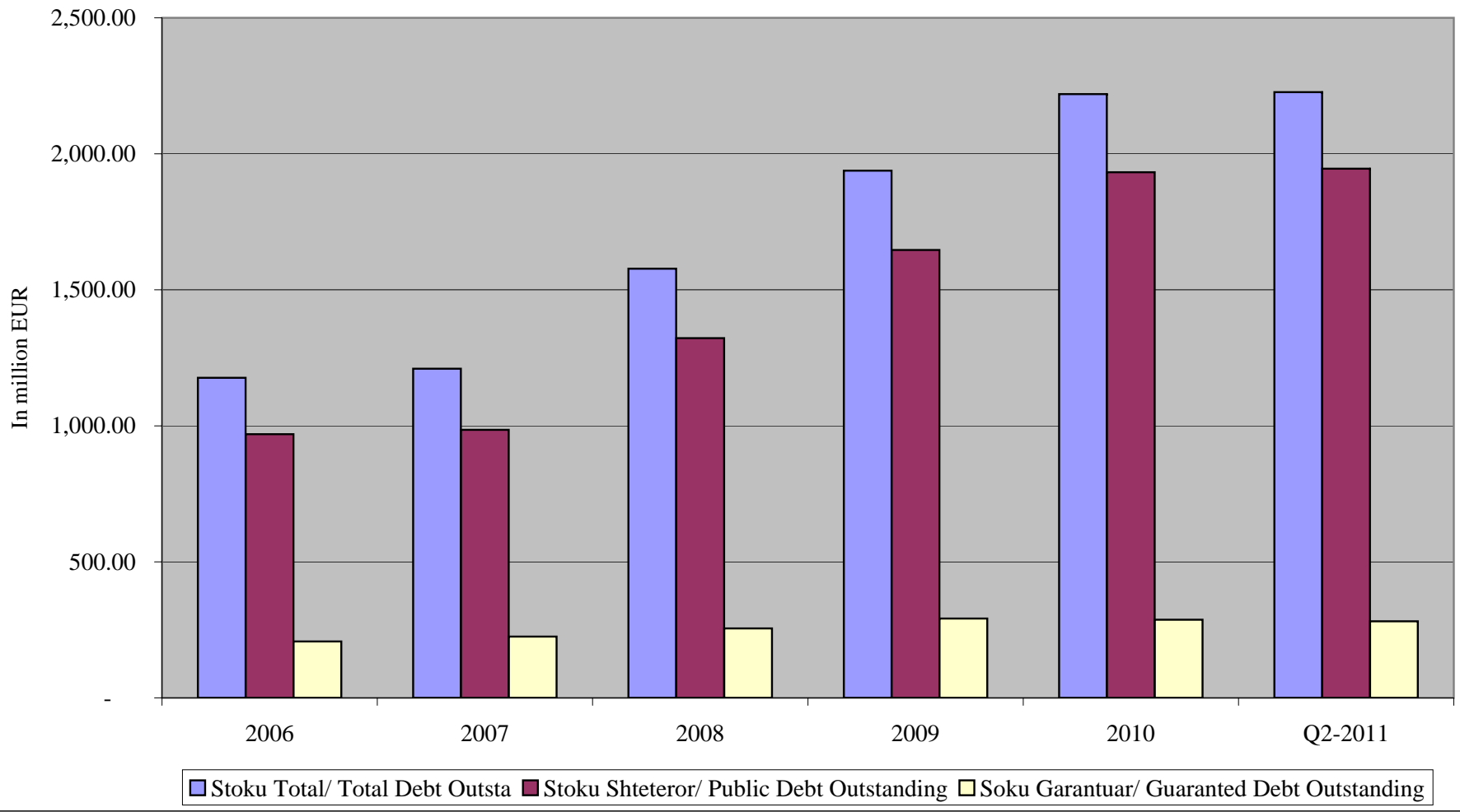
(in million EUR)

<b>Sipas kreditoreve</b>	<b>2007</b>	<b>2008</b>	<b>2009</b>	<b>2010</b>	<b>2011</b>	<b>By Creditors</b>
-Shumepalesh (I)	82.81	67.27	34.17	28.40	28.00	-Multilateral (I)
EBRD	56.81	56.27	34.17	28.40	28.00	EBRD
EIB	26.00	11.00	-	-	-	EIB
-Dypalesh (II)	51.09	45.04	26.05	20.05	13.44	-Bilateral (II)
GJERMANI	34.48	29.82	10.83	4.95	0.44	GERMANY
ITALI	16.42	15.22	15.22	15.11	13.00	ITALY
KOREA	0.19	-	-	-	-	SOUTH KOREA
<b>GJITHSEJ (I+II)</b>	<b>133.90</b>	<b>112.31</b>	<b>60.22</b>	<b>48.45</b>	<b>41.44</b>	<b>TOTAL (I+II)</b>

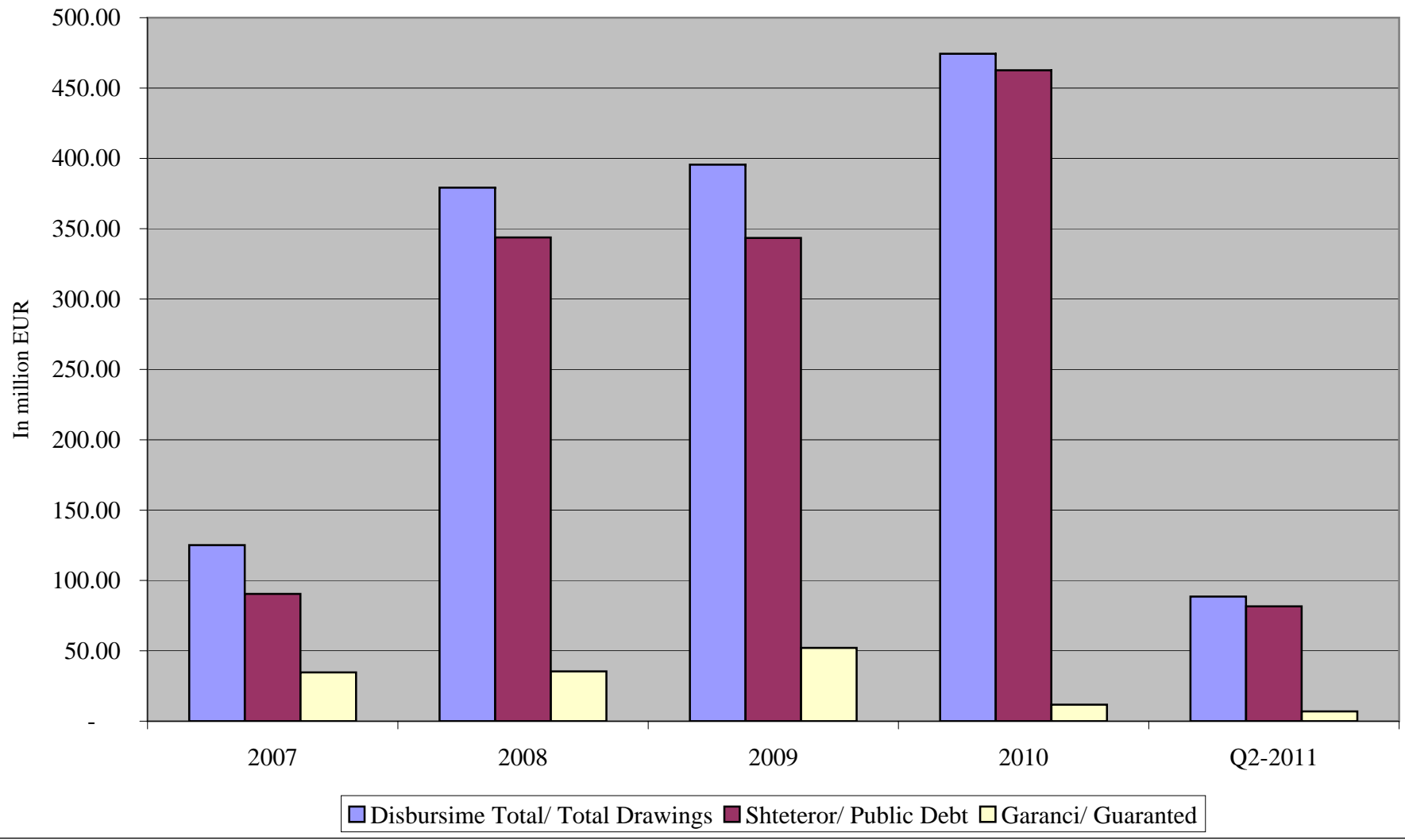
\*\*) Deri me 30.06.2011, te dhena paraprake

\*\*) As of June. 30, 2011, data are preliminary

Paraqitja Grafike e Ecurise se Stokut te Borxhit te Jashtem  
External Outstanding Debt

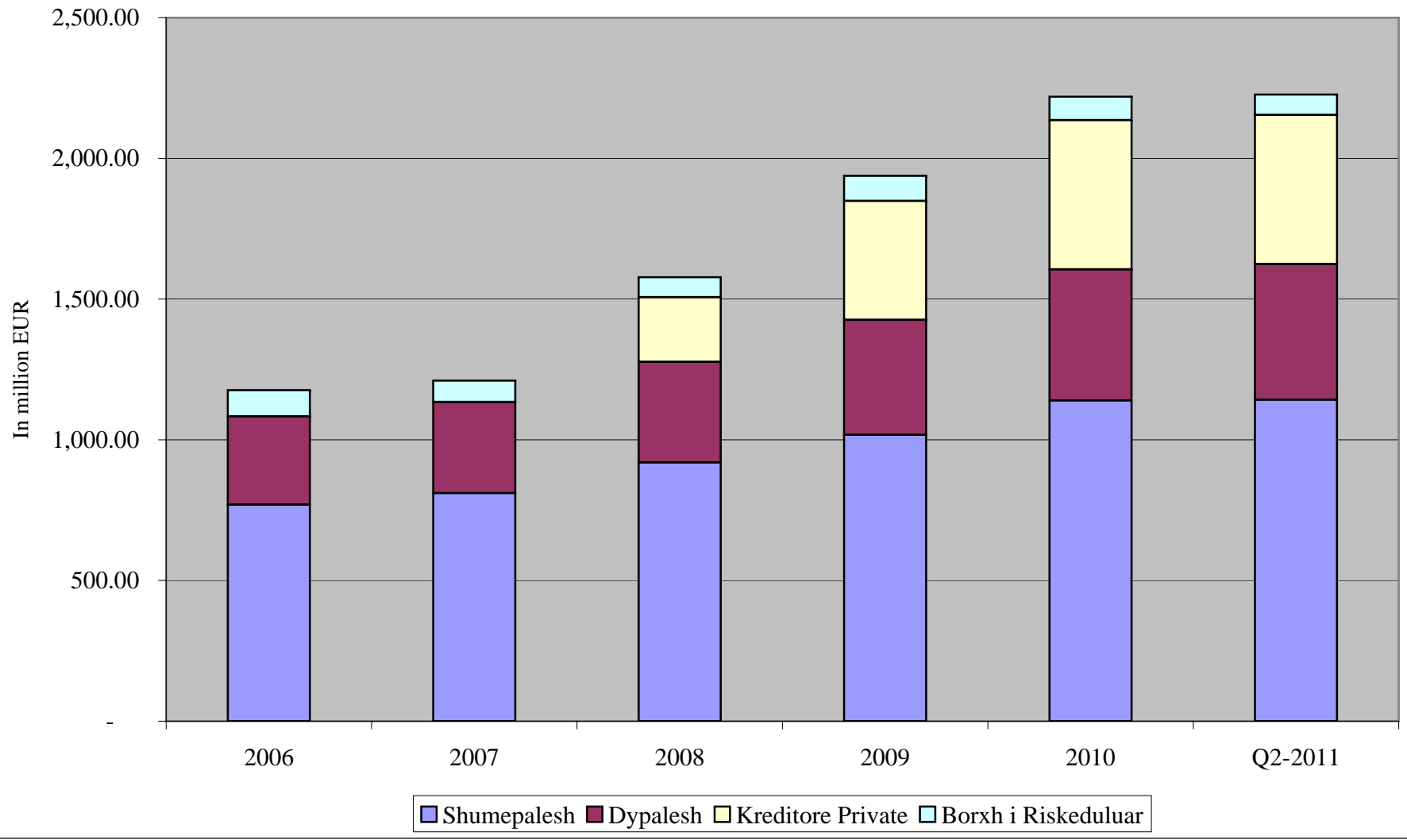


Ecuria e Disbursimeve te Borxhit te Jashtem  
External Debt Drawings

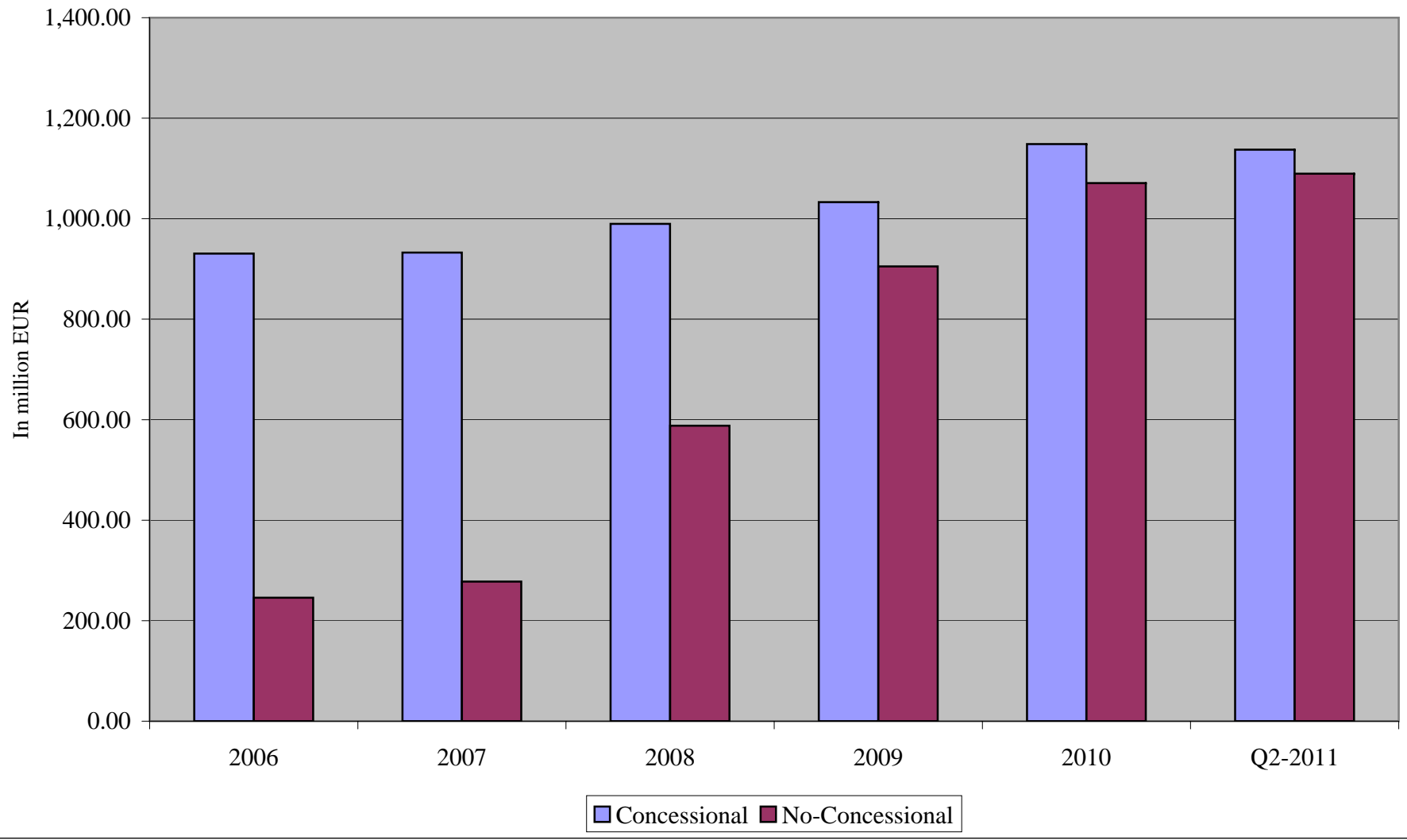




Stoku i Borxhit te Jashtem Sipas Kreditoreve  
Debt Outstanding by Creditor Type

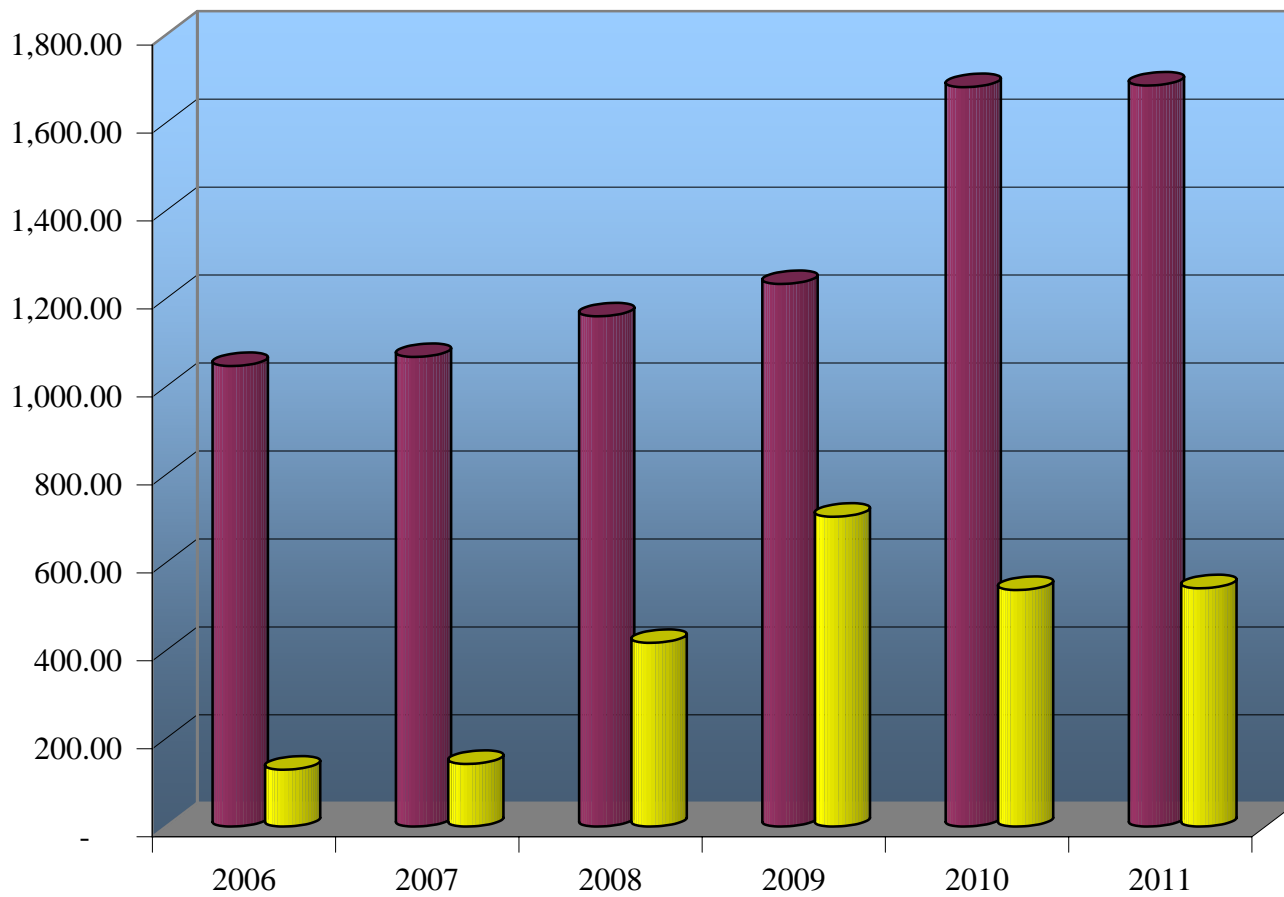


Stoku Borxhit te Jashtem sipas Koncesionalitetit  
Debt Outstanding by Concessionality



Stoku i Borxhit te Jashtem sipas interesit  
Debt Outstanding by Interest Type

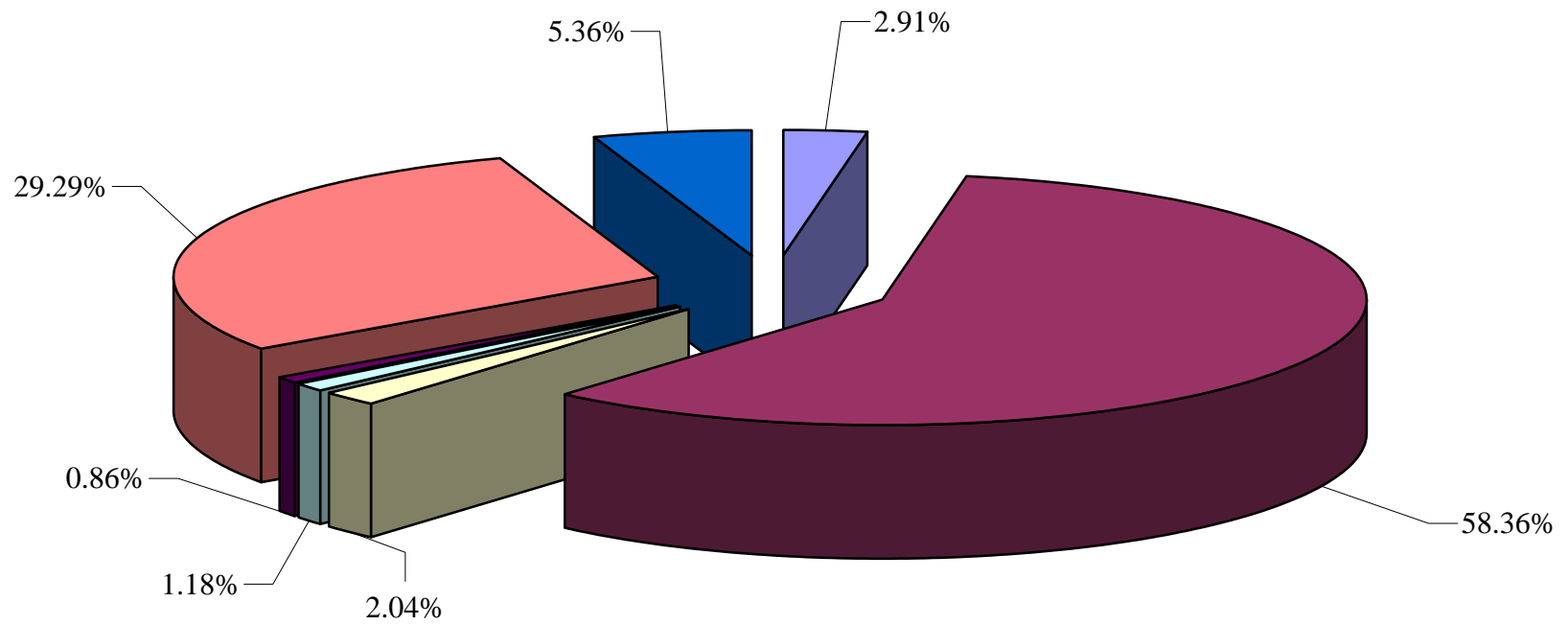
in million Euro



Int. Fix

Int. Variabel

Stoku I Borxhit te Jashtem sipas Monedhave 2011  
External Debt Outstanding by Currency 2011



■ ACU ■ EUR ■ JPY ■ KWD ■ KRW ■ SDR ■ USD