



*100 Vjet Pavarësi*

**REPUBLIKA E SHQIPERISE**  
**MINISTRIA E FINANCAVE**  
**DREJTORIA E PERGJITHSHME E MENAXHIMIT TE BORXHIT PUBLIK**



**MINISTRIA E FINANCAVE**

**Treguesit e Borxhit – 6/M-re I-re 2012**

**Debt Indicators as of June 30, 2012**

**Stoku i Borxhit Publik**  
**Public Debt Stock**

million ALL

	2009	2010	2011	30.06.2012	
<b>Borxhi Publik</b>	682,547	715,517	772,778	801,166	<b>Public Debt Stock</b>
- Borxhi i Qeverise Qendrore	682,547	715,370	772,561	800,913	<b>Central Government Debt Stock</b>
- Borxhi i pushtetit lokal	-	147	218	253	<b>Local Government Debt Stock</b>

**Borxhi i Qeverise Qendrore**  
**Central Government Debt Stock**

million ALL

	2009	2010	2011	30.06.2012	
<b>Borxhi i Qeverise Qendrore, nga i cili:</b>	<b>682,547</b>	<b>715,370</b>	<b>772,561</b>	<b>800,913</b>	<b>Central Government Debt Stock, of which:</b>
-Borxhi i brendshem	415,028	407,372	438,582	453,176	<b>-Domestic Debt</b>
-Borxhi i jashtem*	267,519	307,999	333,979	347,737	<b>-Foreign Debt</b>

**Borxhi i Qeverise Qendrore**  
**Central Government Debt Stock**

million ALL

	2009	2010	2011	30.06.2012	
<b>Borxhi i Qeverise Qendrore, nga i cili:</b>	<b>682,547</b>	<b>715,371</b>	<b>772,560</b>	<b>800,913</b>	<b>Central Government Debt Stock, of which:</b>
-Borxhi i Qeverise	636,773	669,946	724,243	752,946	<b>-Central Government Debt</b>
-Borxhi i garantuar nga Qeveria	45,775	45,425	48,316	47,967	<b>-Central Government Guaranteed Debt</b>

**Borxhi i Qeverise Qendrore**  
**Gross Central Government Debt position**

ALL million

	2011Q3	2011Q4	2012 Q1	2012 Q2	
<b>Gross Central Government Debt</b>					<b>Gross Central Government Debt</b>
<b><u>Sipas maturimit dhe Instrumentave</u></b>	<b><u>722,444</u></b>	<b><u>724,244</u></b>	<b><u>738,995</u></b>	<b><u>752,947</u></b>	<b><u>By maturity and type of instrument:</u></b>
<b>Afatshkurter sipas maturimit origjinal</b>	<b>242,451</b>	<b>241,385</b>	<b>250,781</b>	<b>251,097</b>	<b>Short-term by original maturity</b>
Letra me Vlere te Borxhit	242,451	241,385	250,781	251,097	Debt securities
Kredi					Loans
<b>Afatgjate sipas maturimit origjinal</b>	<b>479,993</b>	<b>482,859</b>	<b>488,214</b>	<b>501,850</b>	<b>Long-term, by original maturity:</b>
<b>Me shlyerje brenda nje viti</b>	<b>47,134</b>	<b>58,429</b>	<b>61,621</b>	<b>62,850</b>	<b>With payment due in one year or less:</b>
Letra me Vlere te Borxhit	46,560	57,700	60,950	62,300	Debt securities
Kredi	574	729	671	550	Loans
<b>Me shlyerje mbi nje vit</b>	<b>432,859</b>	<b>424,430</b>	<b>426,593</b>	<b>439,000</b>	<b>With payment due in more than one year:</b>
Letra me Vlere te Borxhit	185,288	172,518	168,554	172,602	Debt securities
Kredi	247,571	251,912	258,039	266,398	Loans
<b>Borxhi gjithsej</b>	<b>722,444</b>	<b>724,244</b>	<b>738,995</b>	<b>752,947</b>	<b>Total gross debt</b>
Letra me Vlere te Borxhit	474,299	471,603	480,285	485,999	Debt securities
Kredi	248,145	252,641	258,710	266,948	Loans
<b><u>Sipas Monedhes se emetimit</u></b>					<b><u>By currency of denomination:</u></b>
Monedhe Kombetare	429,661	428,754	436,989	443,384	Domestic currency
Monedhe e Huaj	292,783	295,490	302,006	309,562	Foreign currency
<b><u>Sipas rezidences se kreditoreve</u></b>					<b><u>By residence of the creditor:</u></b>
Kreditore vendas	433,566	434,509	444,207	450,489	Domestic creditors
Kreditore te huaj	288,877	289,735	294,787	302,457	External creditors
<b><u>Memorandum item:</u></b>					
<b>Borxhi Brendshem i garantuar</b>	5,638	8,657	8,715	8,627	<b>Domestic Guaranteed Debt</b>
<b>Borxhi Jashtem i garantuar</b>	40,759	39,659	40,644	39,340	<b>External Guaranteed Debt</b>
<b>Borxhi i garantuar Gjithsej</b>	46,397	48,316	49,359	47,967	<b>Total Guaranteed Debt</b>

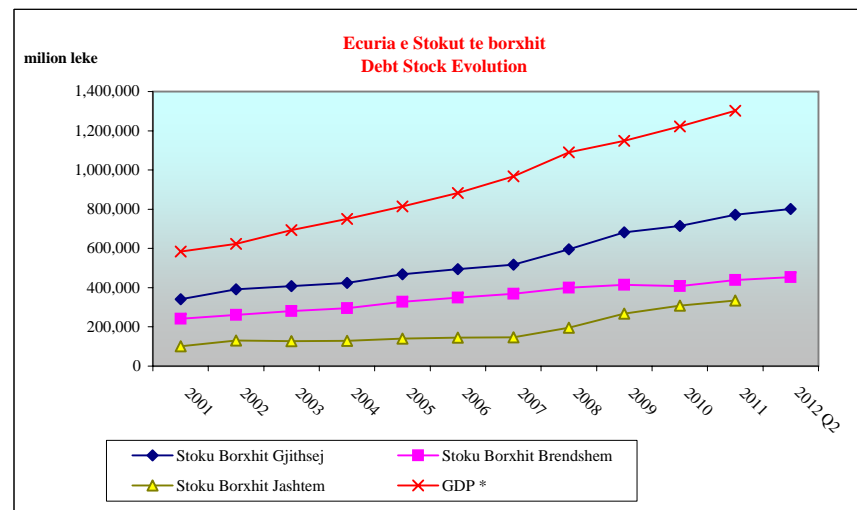
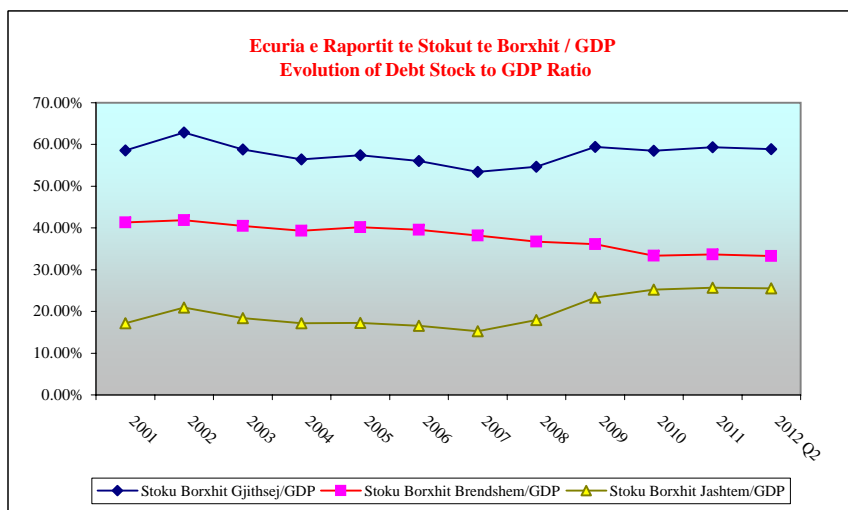
### Stoku i Borxhit te Qeverise qendrore Central Government Debt Stock

milion ALL

	2001	2002	2003	2004	2005	2006	2007	2008	2009	2010	2011	2012 Q2	
<b>Stoku Borxhit Gjithsej</b>	341,521	391,309	408,300	423,962	468,050	494,737	517,031	595,883	682,546	715,371	772,560	800,912	<b>Total Debt Stock</b>
<b>nga i cili garancia</b>	12,861	15,719	18,193	19,601	21,440	25,655	27,401	36,548	45,774	45,426	48,316	47,967	<b>of wich Guaranteed Debt</b>
<b>Stoku Borxhit Brendshem</b>	241,161	260,752	280,767	295,200	327,353	348,935	369,536	400,456	415,028	407,372	438,582	453,175	<b>Domestic Debt Stock</b>
<b>nga i cili garancia</b>							4,952	5,527	5,551	5,551	8,657	8,627	<b>of wich Guaranteed Debt</b>
<b>Stoku Borxhit Jashtem</b>	100,360	130,557	127,533	128,762	140,697	145,802	147,495	195,427	267,518	307,999	333,978	347,737	<b>External Debt Stock</b>
<b>nga i cili garancia</b>	12,861	15,719	18,193	19,601	21,440	25,655	27,401	31,596	40,247	39,875	39,659	39,340	<b>of wich Guaranteed Debt</b>
<b>GDP *</b>	583,369	622,711	694,098	751,022	814,797	882,209	967,670	1,089,293	1,148,082	1,222,462	1,301,750	1,360,914	<b>GDP *</b>
<b>Stoku Borxhit Gjithsej/GDP</b>	58.54%	62.84%	58.82%	56.45%	57.44%	56.08%	53.43%	54.70%	59.45%	58.52%	59.35%	58.85%	<b>Total Debt Stock/GDP</b>
<b>Stoku Borxhit Brendshem/GDP</b>	41.34%	41.87%	40.45%	39.31%	40.18%	39.55%	38.19%	36.76%	36.15%	33.32%	33.69%	33.30%	<b>Domestic Debt Stock/GDP</b>
<b>Stoku Borxhit Jashtem/GDP</b>	17.20%	20.97%	18.37%	17.14%	17.27%	16.53%	15.24%	17.94%	23.30%	25.19%	25.66%	25.55%	<b>External Debt Stock/GDP</b>

\* GDP vjetore

\* Annual GDP



**Borxhi i Brendshem sipas instrumentave**  
**Domestic Debt Stock by Instruments**

milion ALL

	31.12.2009		31.12.2010		31.12.2011		31.03.2012		30.06.2012		
	Purchase value	%	Purchase value	%	Purchase value	%	Purchase value	%	Purchase value	%	
<b>Stoku I Borxhit Gjithsej</b>	<b>415,028</b>		<b>407,372</b>		<b>438,582</b>		<b>446,886</b>		<b>453,175</b>		<b>Total Debt Stock</b>
<b>I.Borxhi Shteteror</b>	<b>409,501</b>	<b>98.67</b>	<b>401,821</b>	<b>98.64</b>	<b>429,924</b>	<b>98.03</b>	<b>438,171</b>	<b>98.05</b>	<b>444,549</b>	<b>98.10</b>	<b>I.Public Debt</b>
<b>1.Instrumenta afatshkurter</b>	<b>237,469</b>	<b>57.22</b>	<b>231,436</b>	<b>56.81</b>	<b>241,385</b>	<b>55.04</b>	<b>250,781</b>	<b>56.12</b>	<b>251,097</b>	<b>55.41</b>	<b>I.Short term Instruments</b>
Bono 3/M	22,870	5.51	11,495	2.82	11,579	2.64	10,305	2.31	9,350	2.06	3 Month Bills
Bono 6/M	47,647	11.48	44,188	10.85	42,914	9.78	42,097	9.42	41,749	9.21	6 Month Bills
Bono 9/M			3,317	0.83	0	0.00	0	0.00	0	0.00	9 Month Bills
Bono 12/M	166,952	40.23	172,436	42.33	186,892	42.61	198,378	44.39	199,998	44.13	1 Year Bills
<b>2.Instrumenta afatgjate</b>	<b>153,162</b>	<b>36.90</b>	<b>170,385</b>	<b>41.83</b>	<b>188,539</b>	<b>42.99</b>	<b>187,390</b>	<b>41.93</b>	<b>193,451</b>	<b>42.69</b>	<b>II. Long term Instruments</b>
Oblig.2/Vj	65,247	15.72	70,957	17.42	75,141	17.13	70,396	15.75	72,896	16.09	2 Year Note
Oblig.3/Vj	15,600	3.76	15,613	3.83	19,387	4.42	20,514	4.59	20,743	4.58	3 Year Note
Oblig.5/Vj	60,315	14.53	71,815	17.63	82,012	18.70	84,480	18.90	85,312	18.83	5 Year Note
Oblig.7/Vj	12,000	2.89	12,000	2.95	12,000	2.74	12,000	2.69	14,500	3.20	7 Year Note
<b>3. Kredi Direkte</b>		<b>0.00</b>		<b>0.00</b>		<b>0.00</b>		<b>0.00</b>		<b>0.00</b>	<b>Central Bank Credits</b>
<b>4.Rivleresimi Valutes</b>	<b>18,870</b>	<b>4.55</b>	<b>0</b>	<b>0.00</b>	<b>0</b>	<b>0.00</b>	<b>0</b>	<b>0.00</b>	<b>0</b>	<b>0.00</b>	<b>Forgn.Ex.Res.Evalu.</b>
<b>II.Borxhi i Garantuar</b>	<b>5,527</b>	<b>1.33</b>	<b>5,551</b>	<b>1.36</b>	<b>8,657</b>	<b>1.97</b>	<b>8,715</b>	<b>1.95</b>	<b>8,627</b>	<b>1.90</b>	<b>II.Publicly Guaranteed Debt</b>
<b>1. Garanci Treg.Brend.</b>	<b>5,527</b>	<b>1.33</b>	<b>5,551</b>	<b>1.36</b>	<b>8,657</b>	<b>1.97</b>	<b>8,715</b>	<b>1.95</b>	<b>8,627</b>	<b>1.90</b>	<b>Domestic Guarantees</b>

**Struktura e Borxhit te Brendshem Shteteror \***  
**Structure of Central Government Domestic Debt**

million ALL

	2009		2010		2011		2012 Q1		2012 Q2		
	million ALL	%	million ALL	%	million ALL	%	million ALL	%	million ALL	%	
<b>- Sipas Instrumentave</b>	<b>390,631</b>		<b>401,821</b>		<b>429,924</b>		<b>438,171</b>		<b>444,549</b>		<b>- By instruments</b>
Instrumenta afatshkurter	237,469	60.79%	231,436	57.60%	241,385	56.15%	250,781	57.23%	251,097	56.48%	short tern
Instrumenta afatgjate	153,162	39.21%	170,385	42.40%	188,539	43.85%	187,390	42.77%	193,451	43.52%	long term
<b>-Sipas monedhes</b>	<b>390,631</b>		<b>401,821</b>		<b>429,924</b>		<b>438,171</b>		<b>438,171</b>		<b>- By currency</b>
-Monedhe kombetare	390,631	100.00%	398,352	99.14%	428,754	99.73%	436,989	99.73%	437,007	99.73%	domestic currency
-Monedhe huaj	0	0.00%	3,469	0.86%	1,170	0.27%	1,182	0.27%	1,164	0.27%	foreign currency
<b>- Sipas rezidences se kreditorit</b>	<b>390,631</b>		<b>401,821</b>		<b>429,924</b>		<b>438,171</b>		<b>444,549</b>		<b>- By creditor's residence</b>
- rezidente	388,472	99.45%	397,928	99.03%	429,924	100.00%	438,171	100.00%	444,549	100.00%	residents
- jo rezidente	2,159	0.55%	3,893	0.97%	0	0.00%	0	0.00%	0	0.00%	non residents

\* Nuk perfsihet rivleresimi i valutes dhe garancite e brendshme

\* Forgn.Ex.Res.Evalu. and domestic guaranties are not included

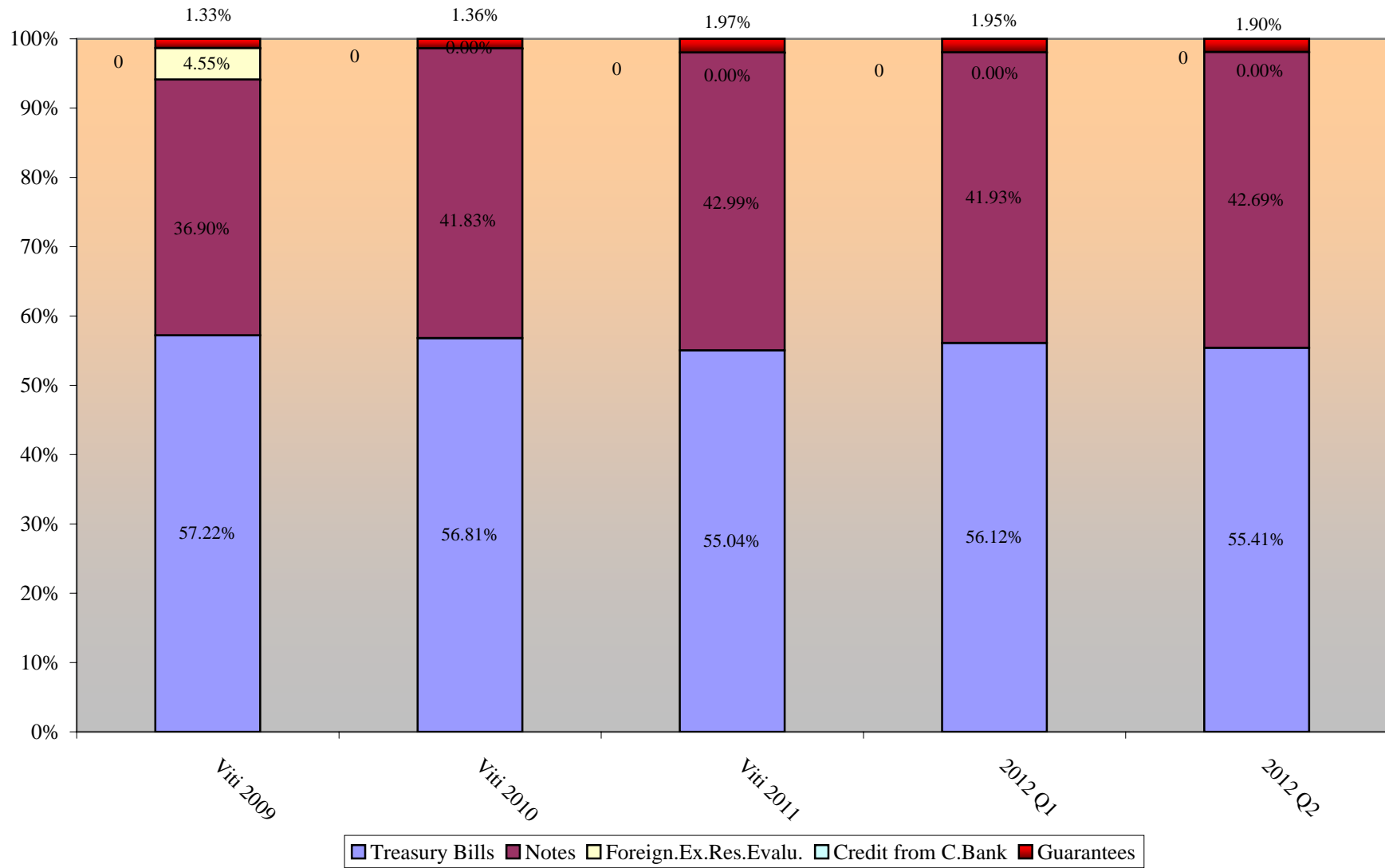
**Financimi me huamarrje te brendshme i Deficitit Buxhetor 6/M I-re 2012**  
**Domestic Deficit Financing as of June 30, 2012**

mije leke

000'ALL

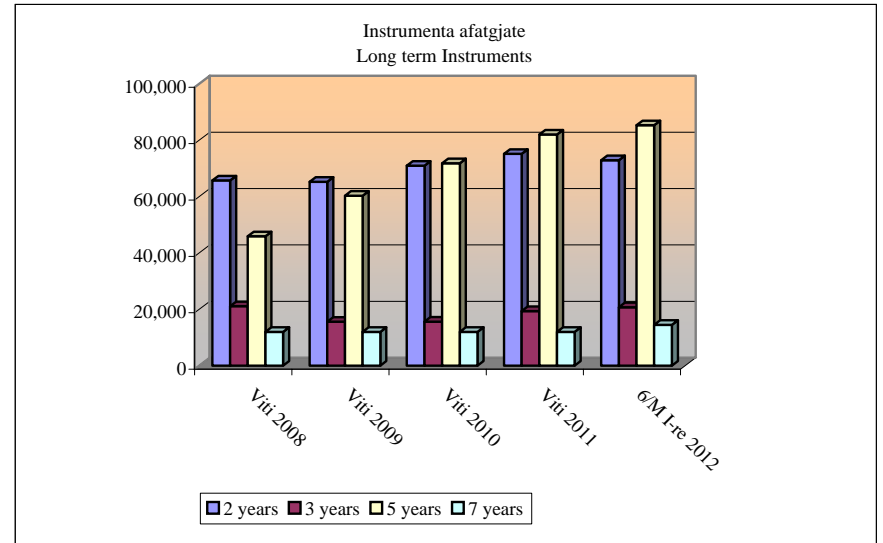
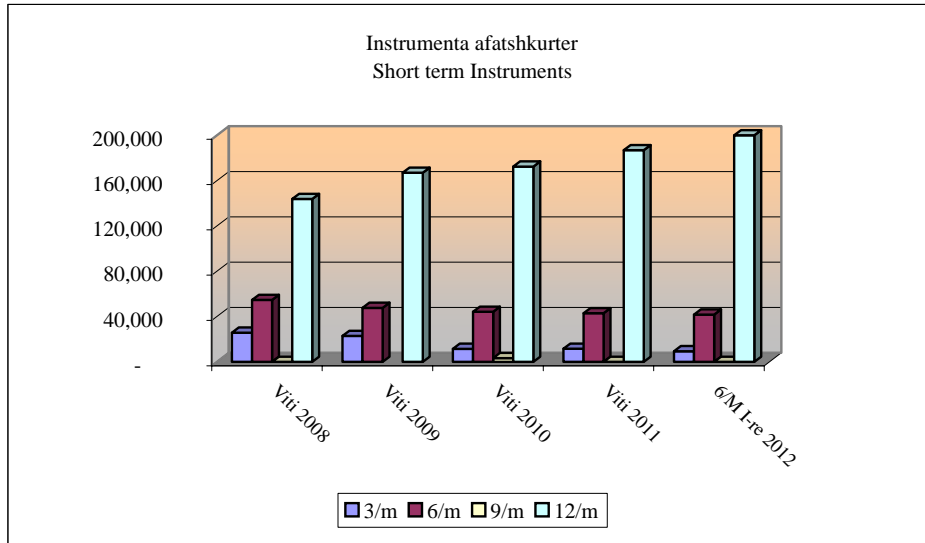
Periudha	2012 Q2	
<b>Financimi i Deficitit</b>	<b>14,627,870</b>	Deficit financing
Nga i cili:		of which :
<b>Instrumenta Afatshkurter</b>	<b>9,718,594</b>	Short term instruments
- Bono Thesari Leke	9,718,594	Tbills ( leke)
- Bono Thesari Euro	0	Tbills ( EURO)
- Kredi Direkte	0	Credit from BOA
<b>Instrumenta Afatgjate</b>	<b>4,909,277</b>	Long term instruments
- Oblig.e qeverise 2 vjecare	-2,244,300	2 y bonds
- Oblig.e qeverise 3 vjecare	1,355,950	3 y bonds
- Oblig.e qeverise 5 vjecare	3,297,627	5 y bonds
- Oblig.e qeverise 7 vjecare	2,500,000	7 y bonds
GDP	1,360,914	GDP
<b>Financimi i Deficitit / GDP</b>	1.07%	Deficit financing / GDP
<b>Instrumenta Afatshkurter / GDP</b>	0.71%	Short term instruments / GDP
<b>Instrumenta Afatgjate / GDP</b>	0.36%	Long term instruments / GDP

**Stoku i Borxhit te Brendshem sipas instrumentave**  
**Domestic Debt Stock by Instruments**



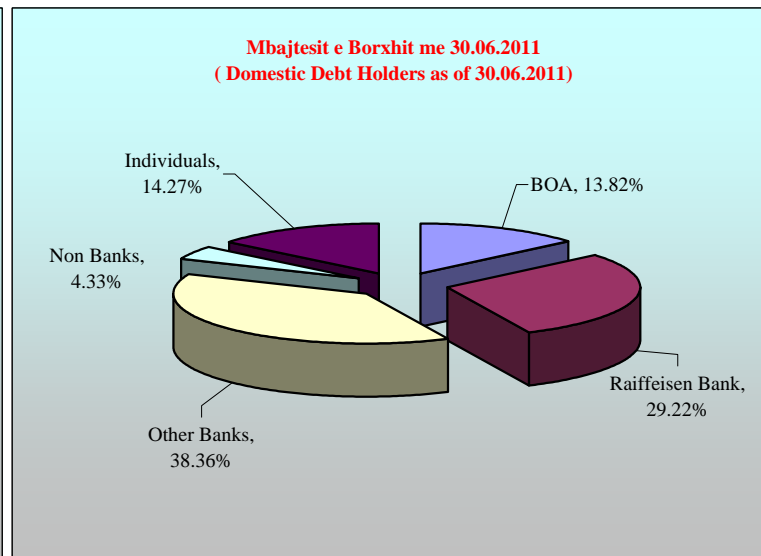
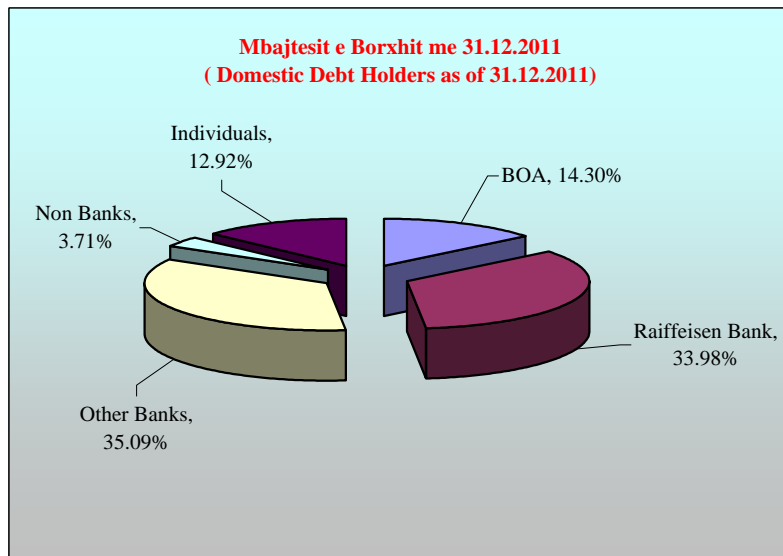


**Ecuria e instrumentave te borxhit te brendshem**  
**Evolution of Domestic Debt Instruments**



**Mbajtesit e Borxhit te Brendshem \* ne Çmim Blerje**  
**Domestic Debt Holders \* in Purchase Value**

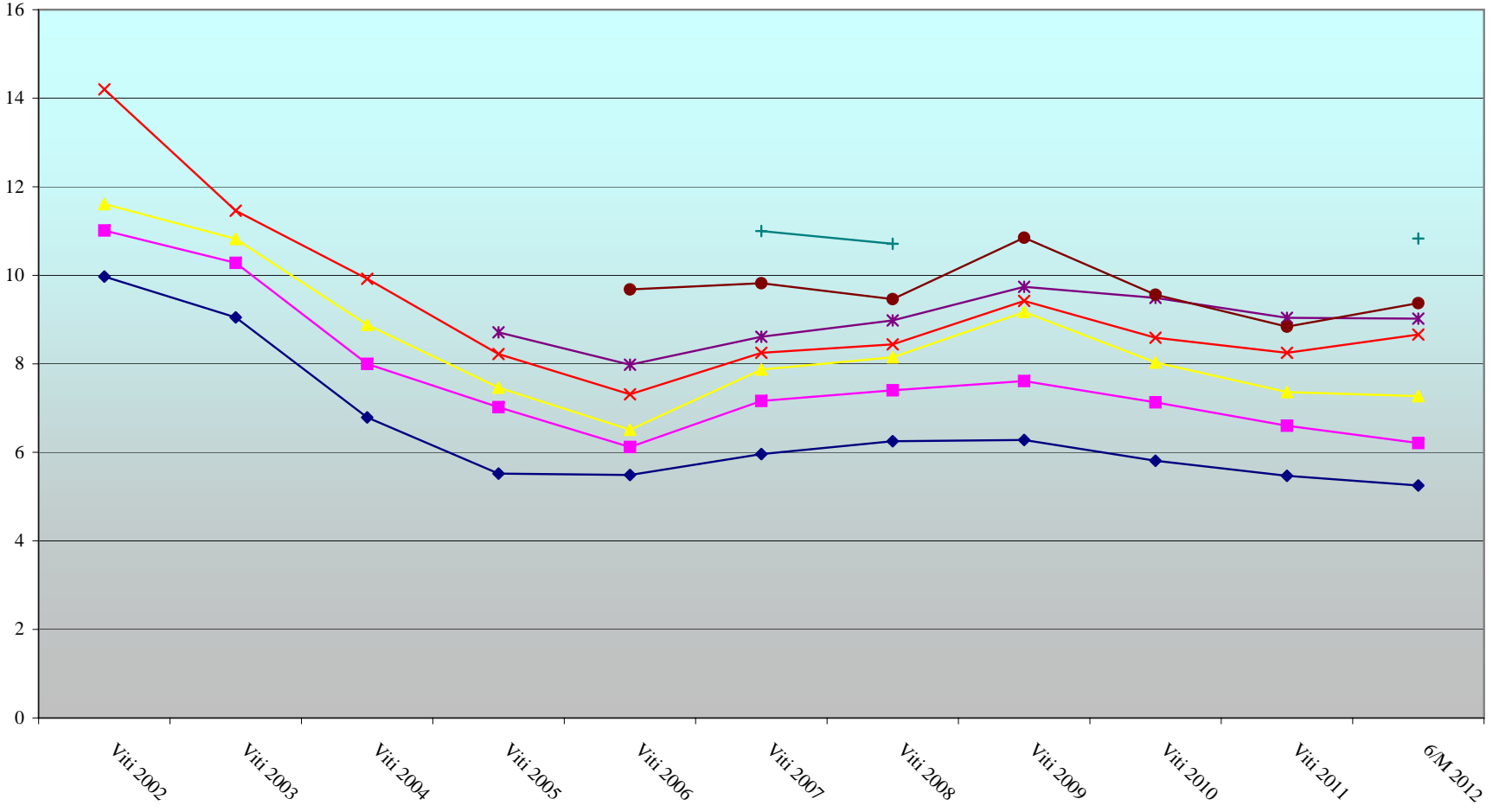
	31.12.2008	31.12.2009	31.12.2010	31.12.2011	31.03.2012	30.06.2012	
<b>BOA</b>	17.75%	17.66%	15.41%	14.30%	13.61%	13.82%	<b>BOA</b>
<b>Raiffeisen Bank</b>	36.88%	34.57%	34.90%	33.98%	31.47%	29.22%	<b>Banka Raiffeisen</b>
<b>Other Banks</b>	34.58%	34.33%	34.40%	35.09%	37.55%	38.36%	<b>Bankat e tjera</b>
<b>Non Banks</b>	2.46%	2.68%	3.21%	3.71%	4.07%	4.33%	<b>Jo Banka</b>
<b>Individuals</b>	8.33%	10.76%	12.08%	12.92%	13.30%	14.27%	<b>Individet</b>



**\*) Nuk perfshihen Rivleresimi i valutes dhe Garancite.**  
**Foreing exchange reserves reevaluation and Guarantees are not included**

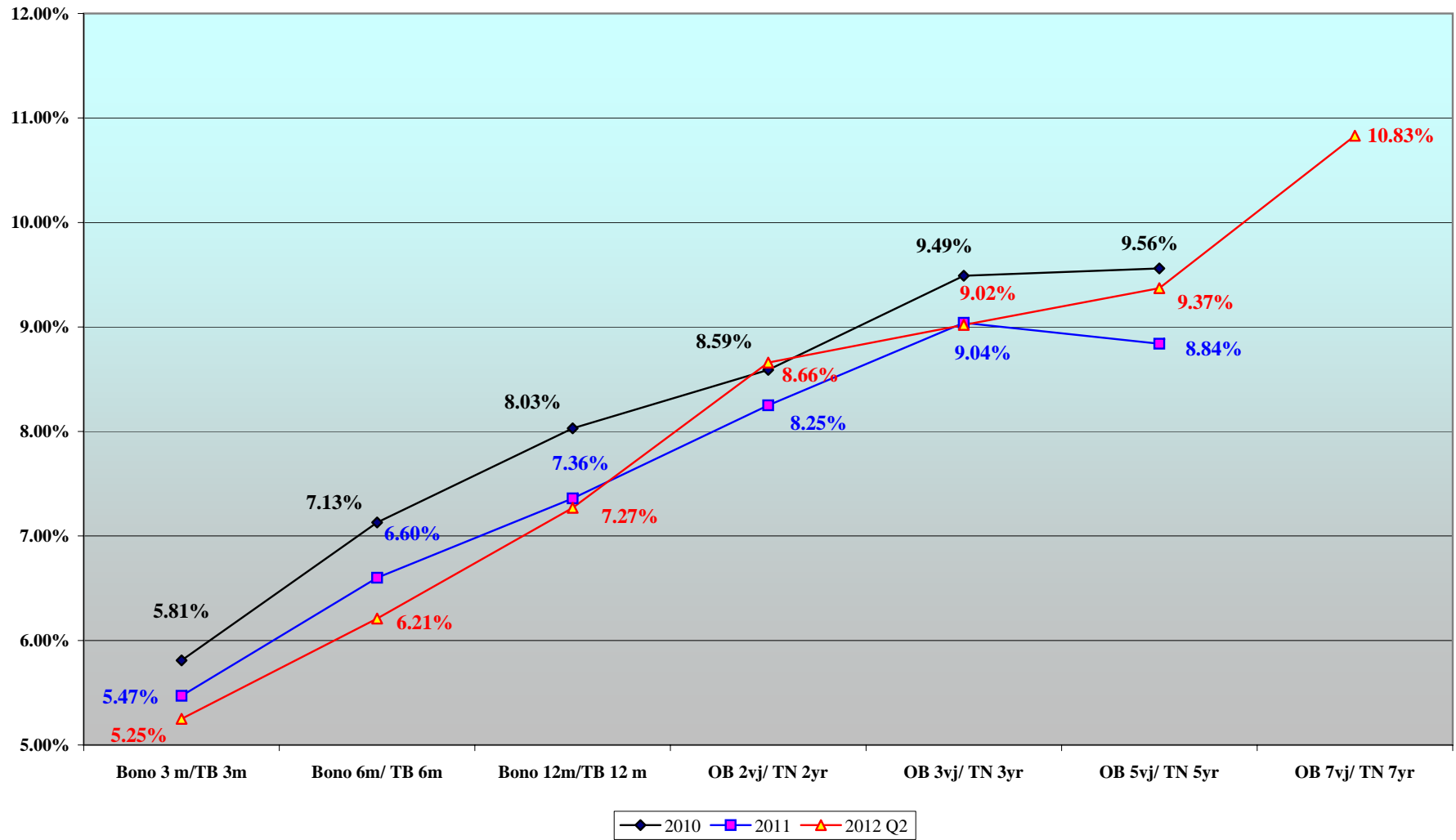
**Interesi mes. ponderuar i Letrave me vlere ne vite sipas Instrumentave**  
**Average Yield Curve in years by Instruments**

%

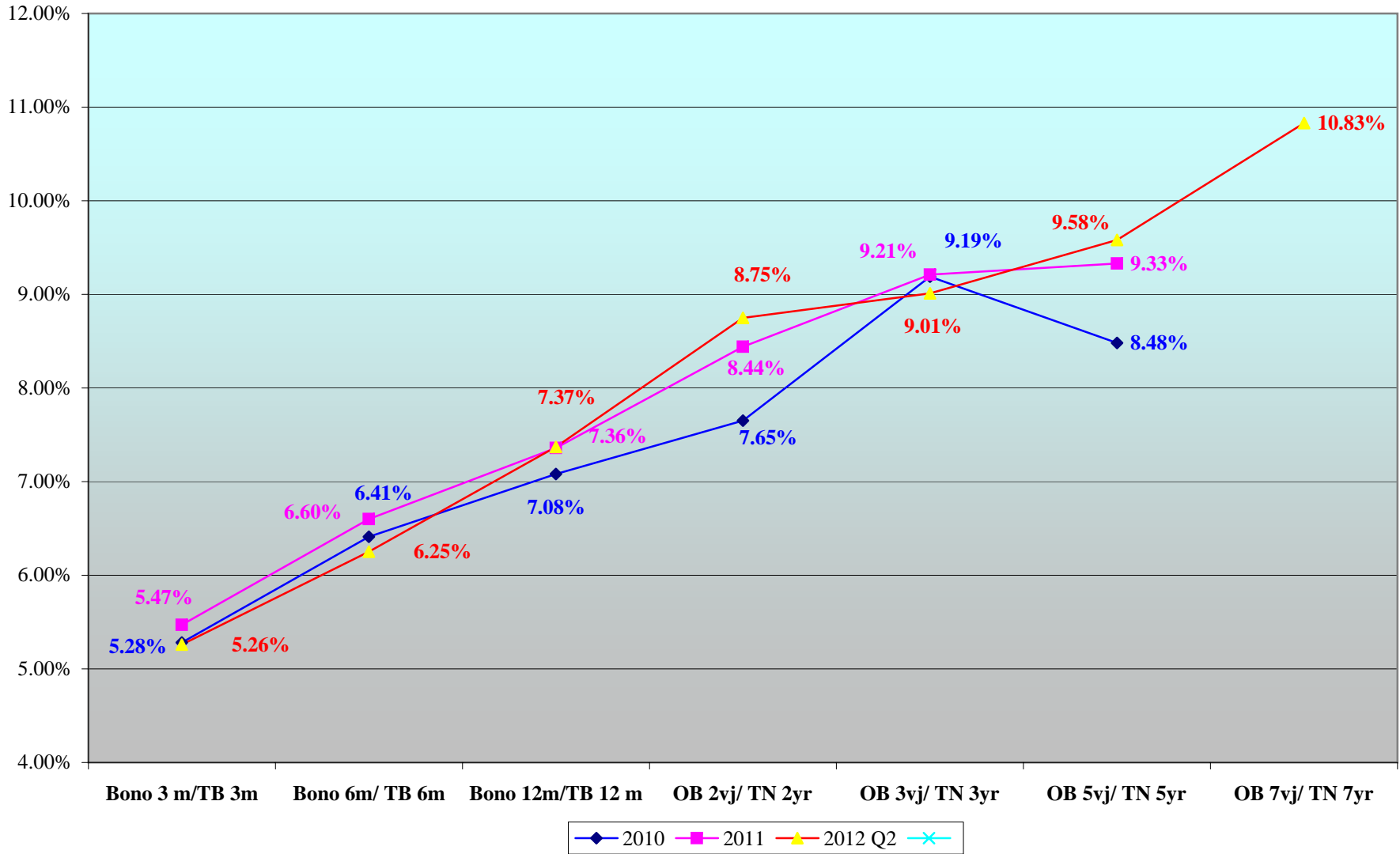


◆ B.Th 3/M    ■ B.Th 6/M    ▲ B.Th 12/M    × Obl.2/vj    \* Obl.3/vj    ● Obl.5/vj    + Obl.7/vj

**Kurba e Yield-it te Letrave me Vlere mes. Pond.**  
**Average Yield Curve Of Albanian Securities**



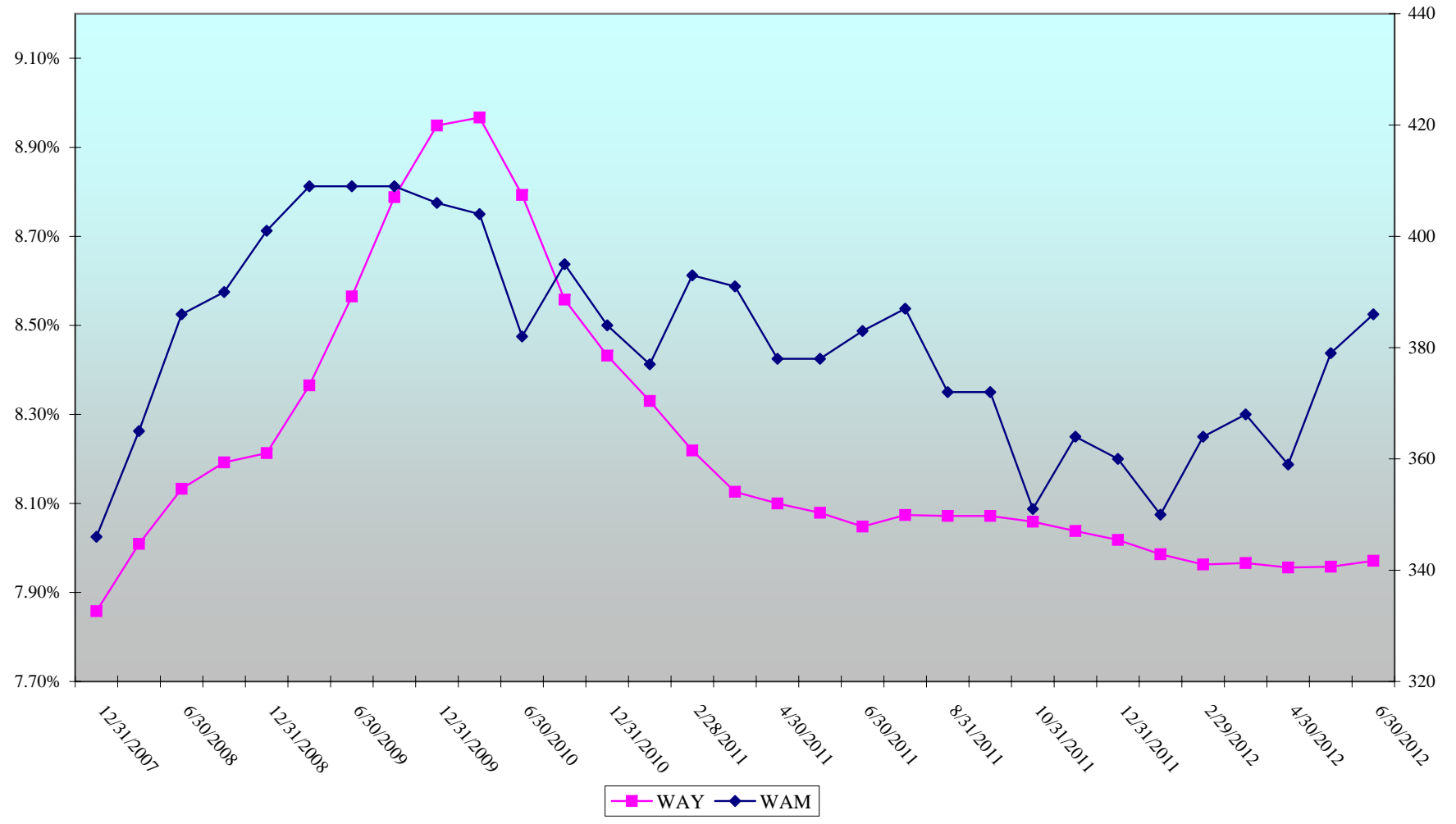
**Kurba e Yield-it te Letrave me Vlere ( te dhenat e ankandit te fundit)**  
**Yield Curve Of Albanian Securities (end of period data)**



**Letrat me vlere te Qeverise**  
**Yield Mesatar & Dite Mesatare ne maturim**  
**Albanian Government Securities**  
**Weighted Average Yield & Weighted Average Maturity**

**Yield**

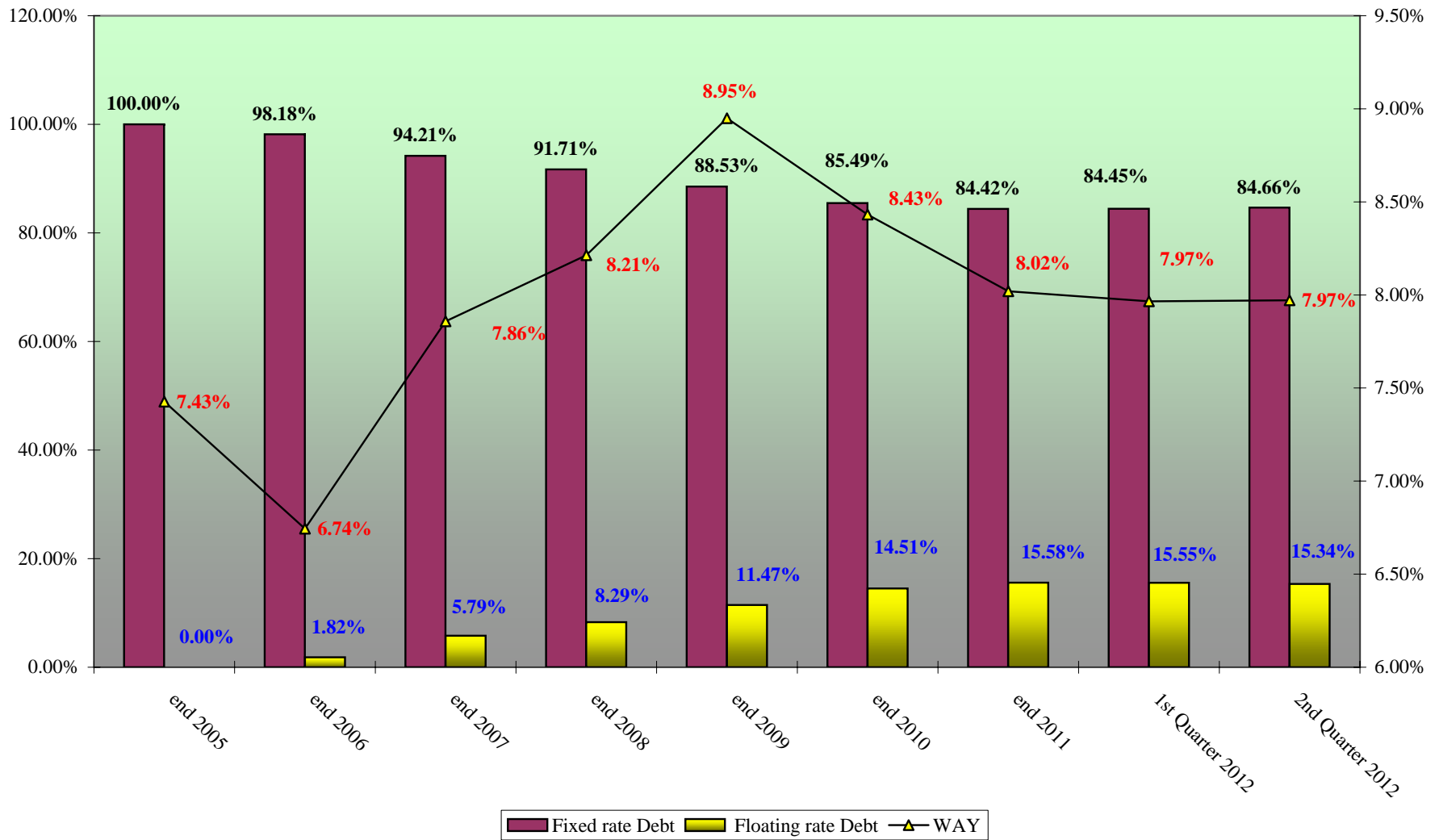
**Days**



**Dite Mesatare ne Maturim & Yield-i Mesatar i Ponderuar**  
**Weighted Average Maturity & Weighted Average Yield**

	<b>Average Maturity</b>	<b>Average Yield</b>	<b>Averg. Mat Pa BOA</b>	<b>Averg Yield Pa BOA</b>
<b>31.12.2005</b>	<b>195</b>	<b>7.427</b>	<b>223</b>	<b>7.589</b>
<b>31.12.2006</b>	<b>242</b>	<b>6.744</b>	<b>284</b>	<b>6.807</b>
<b>31.12.2007</b>	<b>346</b>	<b>7.858</b>	<b>409</b>	<b>8.070</b>
<b>31.12.2008</b>	<b>401</b>	<b>8.213</b>	<b>470</b>	<b>8.461</b>
31.01.2009	408	8.248	475	8.507
29.02.2009	414	8.304	485	8.572
31.03.2009	409	8.365	485	8.647
30.04.2009	408	8.422	482	8.702
31.05.2009	416	8.511	492	8.791
30.06.2009	409	8.565	486	8.844
31.07.2009	419	8.656	494	8.950
31.08.2009	419	8.727	492	9.000
30.09.2009	409	8.788	481	9.068
31.10.2009	402	8.844	471	9.129
30.11.2009	406	8.922	475	9.207
<b>31.12.2009</b>	<b>406</b>	<b>8.949</b>	<b>471</b>	<b>9.236</b>
31.01.2010	403	8.957	465	9.255
28.02.2010	416	8.974	484	9.289
31.03.2010	404	8.967	472	9.286
30.04.2010	394	8.931	460	9.263
31.05.2010	389	8.884	456	9.218
30.06.2010	382	8.793	445	9.120
31.07.2010	395	8.704	456	9.030
31.08.2010	391	8.675	455	8.998
30.09.2010	395	8.558	460	8.878
31.10.2010	383	8.533	448	8.857
30.11.2010	375	8.476	442	8.797
<b>31.12.2010</b>	<b>384</b>	<b>8.432</b>	<b>438</b>	<b>8.705</b>
31.01.2011	377	8.33	425	8.603
28.02.2011	393	8.219	442	8.497
31.03.2011	391	8.126	438	8.397
30.04.2011	378	8.100	424	8.368
31.05.2011	378	8.079	425	8.339
30.06.2011	383	8.048	429	8.293
31.07.2011	387	8.074	432	8.304
31.08.2011	372	8.072	416	8.297
30.09.2011	372	8.072	417	8.296
31.10.2011	351	8.059	395	8.285
30.11.2011	364	8.038	411	8.107
<b>31.12.2011</b>	<b>360</b>	<b>8.018</b>	<b>404</b>	<b>8.256</b>
31.01.2012	350	7.986	391	8.241
29.02.2012	364	7.963	405	8.213
31.03.2012	368	7.966	408	8.212
30.04.2012	359	7.956	396	8.197
31.05.2012	379	7.958	418	8.202
30.06.2012	386	7.971	428	8.220

**Ecuria e Struktures se Borxhit te Brendshem & Yield-I Mesatar i Ponderuar**  
**Evolution of Domestic Debt Structure and Weighted Average Yield**





**BORXHI I JASHEM\* AFATGJATE I SHQIPERISE  
TE DHENA PERMBLEDHESE**

**LONG-TERM EXTERNAL PUBLIC DEBT\*  
SUMMARIZED DATA**

(in million EUR)

Klasifikimi	Deri ne 31.12.2007 Up to 31.12.2007	2008	2009	2010	2011	6M 2012	GJITHSEJ TOTAL	Classification
<b>I. TE DHENA KUMULATIVE</b>								<b>I. CUMULATIVE DATA (STOCK)</b>
<b>Borxhi Neto</b>	1,211.16	1,578.56	1,939.10	2,219.49	2,403.93	2,516.73	2,516.73	<b>Debt Outstanding Disbursed (DOD)</b>
<b>Terheqjet</b>	1,685.18	2,064.37	2,460.21	2,933.10	3,155.36	3,284.33	3,284.33	<b>Drawings</b>
<b>Pagesat e Borxhit</b>	458.43	534.62	641.62	950.61	1,080.91	1,137.93	1,137.93	<b>Debt Service</b>
-Principal	241.89	287.77	344.94	603.93	678.32	717.42	717.42	-Principal
-Interes	216.51	246.85	296.68	346.68	402.59	420.51	420.51	-Interest
<b>Borxhi i nenshkuar i paterhequr</b>	667.22	785.59	718.28	765.62	852.80	860.72	860.72	<b>Committed Undisbursed Balance (CUB)</b>
<b>II. TE DHENA VJETORE</b>								<b>II. ANNUAL DATA (FLOWS)</b>
<b>Terheqjet</b>	125.09	379.19	395.84	472.89	222.26	128.97	1,724.24	<b>Drawings</b>
<b>Pagesat e Borxhit</b>	63.68	75.98	107.00	309.00	130.30	57.02	743.21	<b>Debt Service</b>
-Principal	40.67	45.60	57.17	259.00	74.39	39.10	516.20	-Principal
-Interes	23.01	30.38	49.83	50.00	55.91	17.92	227.01	-Interest

\*) Perfshin borxhin shteteror dhe shteteror te garantuar (Tabela I.1 + Tabela I.2)

\*\*) Perfshihen te dhenat per periudhen 1991-2007

\*\*) Deri me 30.06.2012, te dhena paraprake

Ne kete Tabele nuk perfshihet kredia e FMN-se

\*) Includes Central Government and Central Government Guaranteed debt (Table I.1 + Table I.2)

\*\*) Cumulative data (1991-2007)

\*\*) As of Jun 30, 2012, data are preliminary

IMF credit is not included

**BORXHI I JASHEM I QEVERISE QENDRORE  
TE DHENA PERMBLEDHESE**

**CENTRAL GOVERNMENT EXTERNAL DEBT  
SUMMARIZED DATA**

(in million EUR)

Klasifikimi	Deri ne 31.12.2007 Up to 31.12.2007	2008	2009	2010	2011	6M 2012	GJITHSEJ TOTAL	Classification
<b>I. TE DHENA KUMULATIVE</b>								<b>I. CUMULATIVE DATA (STOCK)</b>
Borxhi Neto	986.15	1,323.35	1,647.37	1,932.15	2,118.47	2,232.01	2,232.01	Debt Outstanding Disbursed (DOD)
Terheqjet	1,403.61	1,747.40	2,091.14	2,552.27	2,758.28	2,878.02	2,878.02	Drawings
<u>Pagesat e Borxhit</u>	<u>384.85</u>	<u>441.95</u>	<u>526.21</u>	<u>808.71</u>	<u>911.29</u>	<u>953.92</u>	<u>953.92</u>	Debt Service
-Principal	200.56	235.00	277.13	516.48	570.23	598.63	598.63	-Principal
-Interes	184.27	207.17	249.08	292.23	341.06	355.29	355.29	-Interest
Borxhi i nenshkruar i paterhequr	533.32	673.28	658.06	717.17	820.60	837.74	837.74	Committed Undisbursed Balance (CUB)
<b>II. TE DHENA VJETORE</b>								<b>II. ANNUAL DATA (FLOWS)</b>
Terheqjet	90.45	343.79	343.74	461.13	206.01	119.74	1,564.86	Drawings
<u>Pagesat e Borxhit</u>	<u>48.48</u>	<u>57.34</u>	<u>84.04</u>	<u>282.50</u>	<u>102.58</u>	<u>42.63</u>	<u>617.58</u>	Debt Service
-Principal	32.00	34.44	42.13	239.35	53.75	28.41	430.08	-Principal
-Interes	16.49	22.90	41.91	43.15	48.83	14.23	187.50	-Interest

\*) Përfshihen të dhënat për periudhën 1991-2007

\*\*\*) Deri më 30.06.2012, të dhëna paraprake  
Në këtë tabelë nuk përfshihet kredia e FMN-se

\*) Cumulative data (1991-2007)

\*\*\*\*) As of Jun 30, 2012, data are preliminary  
IMF credit is not included

**BORXHI I JASHEM I GARANTUAR NGA QEVERIA QENDRORE  
TE DHENA PERMBLEDHESE**

**CENTRAL GOVERNMENT GUARANTEED DEBT  
SUMMARIZED DATA**

(in million EUR)

Klasifikimi	Deri ne 31.12.2007 Up to 31.12.2007	2008	2009	2010	2011	6M 2012	GJITHSEJ TOTAL	Classification
<b>I. TE DHENA KUMULATIVE</b>								<b>I. CUMULATIVE DATA (STOCK)</b>
Borxhi Neto	225.01	255.21	291.73	287.34	285.46	284.72	284.72	Debt Outstanding Disbursed (DOD)
Terheqjet	281.57	316.97	369.07	380.83	397.08	406.31	406.31	Drawings
<u>Pagesat e Borxhit</u>	<u>73.58</u>	<u>92.45</u>	<u>115.41</u>	<u>141.91</u>	<u>169.63</u>	<u>184.01</u>	<u>184.01</u>	<u>Debt Service</u>
-Principal	41.33	52.77	67.81	87.45	108.09	118.78	118.78	-Principal
-Interes	32.24	39.68	47.60	54.45	61.53	65.23	65.23	-Interest
Borxhi i nenshkruar i paterhequr	133.90	112.31	60.22	48.45	32.20	22.98	22.98	Committed Undisbursed Balance (CUB)
<b>II. TE DHENA VJETORE</b>								<b>II. ANNUAL DATA (FLOWS)</b>
Terheqjet	34.64	35.40	52.10	11.76	16.25	9.23	159.38	Drawings
<u>Pagesat e Borxhit</u>	<u>15.19</u>	<u>18.88</u>	<u>22.96</u>	<u>26.50</u>	<u>27.72</u>	<u>14.39</u>	<u>125.63</u>	<u>Debt Service</u>
-Principal	8.67	11.44	15.04	19.65	20.64	10.69	86.12	-Principal
-Interes	6.52	7.44	7.92	6.85	7.08	3.70	39.51	-Interest

\*) Përfshihen të dhënat për periudhën 1991-2007

\*\*\*) Deri më 30.06.2012, të dhëna paraprake

\*) Cumulative data (1991-2007)

\*\*\*) As of Jun 30, 2012, data are preliminary

**BORXHI I JASHEM\* AFATGJATE I SHQIPERISE**  
**TERHEQJET NE VITE NGA KREDITE E HUAJA SIPAS KREDITOREVE**  
**LONG-TERM EXTERNAL PUBLIC DEBT\***  
**DRAWINGS BY YEARS AND BY CREDITORS**

(in million EUR)

Sipas kreditoreve	Deri ne 31.12.2007 Up to 31.12.2007	2008	2009	2010	2011	3M 2012	6M 2012	TOTALI	By Creditors
-Shumepalesh (I)	1,009.94	112.97	136.80	111.20	165.49	46.35	55.01	1,637.75	-Multilateral (I)
CEB	18.38	15.41	21.83	21.30	25.14	0.63	5.40	108.09	CEB
IBRD	3.85	8.08	4.94	2.32	21.10	2.05	2.30	44.64	IBRD
EC	9.00	-	-	-	-	-	-	9.00	EC
EBRD	95.62	24.93	32.24	14.38	36.05	14.32	5.82	223.36	EBRD
EIB	130.32	31.76	28.19	27.28	29.65	13.00	12.83	273.03	EIB
IDA	660.07	18.53	25.02	19.61	17.26	6.93	4.81	752.23	IDA
IDB	39.01	9.45	14.80	13.38	30.44	8.25	23.36	138.68	IDB
IFAD	30.46	1.51	1.41	2.17	1.22	0.41	0.09	37.27	IFAD
OPEC	23.22	3.30	8.36	10.76	4.63	0.76	0.40	51.44	OPEC
-Dypalesh (II)	583.76	36.22	66.44	63.20	56.77	12.79	14.83	834.00	-Bilateral (II)
AUSTRIA	4.51	-	5.03	2.46	6.35	5.01	0.51	23.86	AUSTRIA
BULLGARI	0.08	-	-	-	-	-	-	0.08	BULGARIA
ÇEKI	8.49	-	-	-	-	-	-	8.49	CZECH REP.
GREQI	49.35	-	-	-	-	-	-	49.35	GREECE
GJERMANI	125.75	10.74	24.79	15.04	17.79	2.79	1.15	198.05	GERMANY
HUNGARI	11.92	-	-	-	-	-	-	11.92	HUNGARY
ITALI	141.47	17.10	23.24	39.19	29.28	2.72	12.47	265.48	ITALY
JAPONI	52.71	-	-	2.29	1.32	0.15	0.24	56.71	JAPAN
JUGOSLLAVI	0.05	-	-	-	-	-	-	0.05	YUGOSLAVIA
MAQEDONI	0.98	-	-	-	-	-	-	0.98	MACEDONIA
TURQI	26.86	-	-	-	-	-	-	26.86	TURKEY
KUVAIT	39.13	3.04	2.46	2.50	0.83	1.14	0.45	49.54	KUWAIT
KINE	41.09	-	-	-	-	-	-	41.09	CHINA
KOREA	21.85	0.21	-	-	-	-	-	22.05	SOUTH KOREA
POLONI	0.92	-	-	-	-	-	-	0.92	POLAND
RUMANI	4.50	-	-	-	-	-	-	4.50	ROMANIA
SPANJE	0.95	0.74	5.02	-	-	-	-	6.71	SPAIN
SLOVAKI	4.30	-	-	-	-	-	-	4.30	SLOVAKIA
SUEDI	3.14	-	-	-	-	-	-	3.14	SWEDEN
NORVEGJI	28.86	-	-	-	-	-	-	28.86	NORWAY
ARABIA SAUDITE	-	-	-	-	0.80	0.98	-	1.78	SAUDI ARABIA
HOLLANDE	-	4.40	5.90	1.72	0.40	-	0.01	12.42	NETHERLANDS
RUSIA	0.73	-	-	-	-	-	-	0.73	RUSSIA
SERBIA	5.93	-	-	-	-	-	-	5.93	SERBIA
ZVICRA	4.47	-	-	-	-	-	-	4.47	SWITZERLAND
SLOVENIA	2.91	-	-	-	-	-	-	2.91	SLOVENIA
BOSNIA-HERCEG	2.82	-	-	-	-	-	-	2.82	BOSNIA-HERCEG
Kreditore Private (III)	-	230.00	192.60	298.49	-	-	-	721.09	Private Creditors (III)
Kreditore Private	-	230.00	192.60	-	-	-	-	422.60	Private Creditors
EUROBONDI	-	-	-	298.49	-	-	-	298.49	EUROBOND
-Klubi i Parisit (IV)	91.49	-	-	-	-	-	-	91.49	-Paris Club (IV)
AUSTRI	8.85	-	-	-	-	-	-	8.85	AUSTRIA
ANGLI	0.02	-	-	-	-	-	-	0.02	UNITED KINGDOM
DANIMARKE	0.12	-	-	-	-	-	-	0.12	DENMARK
FRANCE	21.85	-	-	-	-	-	-	21.85	FRANCE
GJERMANI	13.14	-	-	-	-	-	-	13.14	GERMANY
HOLLANDE	1.18	-	-	-	-	-	-	1.18	NETHERLANDS
ITALI	7.57	-	-	-	-	-	-	7.57	ITALY
JAPONI	0.24	-	-	-	-	-	-	0.24	JAPAN
RUSI	38.52	-	-	-	-	-	-	38.52	RUSSIA
<b>GJITHSEJ (I+II+III+IV)</b>	<b>1,685.18</b>	<b>379.19</b>	<b>395.83</b>	<b>472.88</b>	<b>222.26</b>	<b>59.14</b>	<b>69.84</b>	<b>3,284.32</b>	<b>TOTAL (I+II+III+IV)</b>

\*) Përfshin borxhin shtetëror dhe shtetëror të garantuar (Tabela II.1 + Tabela II.2)

Ne kete tabelë nuk përfshihen kredia e FMN-se

\*\*) Deri me 30.06.2012, të dhëna paraprake

\*) Includes Central Government and Central Government Guaranteed debt

IMF credit is not included

\*\*) As of June 30, 2012, data are preliminary

**BORXHI I JASHEM I QEVERISE QENDRORE**  
**TERHEQJET NE VITE NGA KREDITE E HUAJA SIPAS KREDITOREVE**

**CENTRAL GOVERNMENT EXTERNAL DEBT**  
**DRAWINGS BY YEARS AND BY CREDITORS**

(in million EUR)

Sipas kreditoreve	Deri ne 31.12.2007 Up to 31.12.2007	2008	2009	2010	2011	3M 2012	6M 2012	TOTALI	By Creditors
-Shumepalesh (I)	889.79	83.58	103.69	105.42	156.37	39.42	53.69	1,431.96	-Multilateral (I)
CEB	18.38	15.41	21.83	21.30	25.14	0.63	5.40	108.09	CEB
IBRD	3.85	8.08	4.94	2.32	21.10	2.05	2.30	44.64	IBRD
EC	9.00	-	-	-	-	-	-	9.00	EC
EBRD	24.13	10.54	10.14	8.60	26.93	7.39	4.50	92.22	EBRD
EIB	81.67	16.76	17.19	27.28	29.65	13.00	12.83	198.38	EIB
IDA	660.07	18.53	25.02	19.61	17.26	6.93	4.81	752.23	IDA
IDB	39.01	9.45	14.80	13.38	30.44	8.25	23.36	138.68	IDB
IFAD	30.46	1.51	1.41	2.17	1.22	0.41	0.09	37.27	IFAD
OPEC	23.22	3.30	8.36	10.76	4.63	0.76	0.40	51.44	OPEC
-Dypalesh (II)	422.39	30.21	47.45	57.21	49.64	11.85	14.79	633.52	-Bilateral (II)
AUSTRIA	4.51	-	5.03	2.46	6.35	5.01	0.51	23.86	AUSTRIA
BULLGARI	0.08	-	-	-	-	-	-	0.08	BULGARIA
ÇEKI	8.49	-	-	-	-	-	-	8.49	CZECH REP.
GREQI	40.54	-	-	-	-	-	-	40.54	GREECE
GJERMANI	78.63	6.08	5.80	9.16	13.14	2.79	1.15	116.75	GERMANY
HUNGARI	11.92	-	-	-	-	-	-	11.92	HUNGARY
ITALI	94.43	15.95	23.24	39.08	26.80	1.78	12.43	213.72	ITALY
JAPONI	16.15	-	-	2.29	1.32	0.15	0.24	20.15	JAPAN
JUGOSLLAVI	0.05	-	-	-	-	-	-	0.05	YUGOSLAVIA
MAQEDONI	0.98	-	-	-	-	-	-	0.98	MACEDONIA
TURQI	26.86	-	-	-	-	-	-	26.86	TURKEY
KUVAIT	39.13	3.04	2.46	2.50	0.83	1.14	0.45	49.54	KUWAIT
KINE	41.09	-	-	-	-	-	-	41.09	CHINA
POLONI	0.92	-	-	-	-	-	-	0.92	POLAND
RUMANI	4.50	-	-	-	-	-	-	4.50	ROMANIA
SPANJE	0.95	0.74	5.02	-	-	-	-	6.71	SPAIN
SLOVAKI	4.30	-	-	-	-	-	-	4.30	SLOVAKIA
SUEDI	3.14	-	-	-	-	-	-	3.14	SWEDEN
NORVEGJI	28.86	-	-	-	-	-	-	28.86	NORWAY
Saudi Arabia	-	-	-	-	0.80	0.98	-	1.78	Saudi Arabia
HOLLANDE	-	4.40	5.90	1.72	0.40	-	0.009	12.42	NETHERLANDS
Russia	0.73	-	-	-	-	-	-	0.73	Russia
Serbia	5.93	-	-	-	-	-	-	5.93	Serbia
ZVICRA	4.47	-	-	-	-	-	-	4.47	SWITZERLAND
SLOVENIA	2.91	-	-	-	-	-	-	2.91	SLOVENIA
BOSNIA-HERCEG	2.82	-	-	-	-	-	-	2.82	BOSNIA-HERCEG
Kreditor Privat (III)	-	230.00	192.60	298.49	-	-	-	721.09	Private Creditors (III)
Kreditor Private kredi	-	230.00	192.60	-	-	-	-	422.60	Private Creditors Loans
EUROBONDI	-	-	-	298.49	-	-	-	298.49	EUROBOND
-Klubi i Parisit (IV)	91.44	-	-	-	-	-	-	91.44	-Paris Club (IV)
AUSTRI	8.85	-	-	-	-	-	-	8.85	AUSTRIA
ANGLI	0.02	-	-	-	-	-	-	0.02	UNITED KINGDOM
DANIMARKE	0.12	-	-	-	-	-	-	0.12	DENMARK
FRANCE	21.85	-	-	-	-	-	-	21.85	FRANCE
GJERMANI	13.14	-	-	-	-	-	-	13.14	GERMANY
HOLLANDE	1.18	-	-	-	-	-	-	1.18	NETHERLANDS
ITALI	7.57	-	-	-	-	-	-	7.57	ITALY
JAPONI	0.20	-	-	-	-	-	-	0.20	JAPAN
RUSI	38.52	-	-	-	-	-	-	38.52	RUSSIA
<b>GJITHSEJ (I+II+III+IV)</b>	<b>1,403.61</b>	<b>343.79</b>	<b>343.74</b>	<b>461.12</b>	<b>206.01</b>	<b>51.27</b>	<b>68.48</b>	<b>2,878.01</b>	<b>TOTAL (I+II+III+IV)</b>

Ne kete tabelë nuk përfshihen kredia e FMN-se  
 \*\*) Deri me 30.06.2012, të dhëna paraprake

IMF credit is not included  
 \*\*) As of June 30, 2012, data are preliminary

**BORXHI I JASHEM I GARANTUAR NGA QEVERIA QENDRORE  
TERHEQJET NE VITE NGA KREDITE E HUAJA SIPAS KREDITOREVE**

**CENTRAL GOVERNMENT GUARANTEED DEBT  
DRAWINGS BY YEARS AND BY CREDITORS**

(in million EUR)

Sipas kreditoreve	Deri ne 31.12.2007 Up to 31.12.2007	2008	2009	2010	2011	3M 2012	6M 2012	GJITHSEJ TOTAL	By Creditors
-Shumepalesh (I)	120.15	29.39	33.10	5.77	9.12	6.93	1.32	205.79	-Multilateral (I)
EBRD	71.50	14.39	22.10	5.77	9.12	6.93	1.32	131.14	EBRD
EIB	48.65	15.00	11.00	-	-	-	-	74.65	EIB
-Dypalesh (II)	161.37	6.01	18.99	5.99	7.13	0.94	0.04	200.48	-Bilateral (II)
GJERMANI	47.12	4.66	18.99	5.88	4.65	-	-	81.30	GERMANY
GREQI	8.80	-	-	-	-	-	-	8.80	GREECE
ITALI	47.04	1.15	-	0.11	2.48	0.94	0.04	51.76	ITALY
JAPONI	36.56	-	-	-	-	-	-	36.56	JAPAN
KOREA	21.85	0.21	-	-	-	-	-	22.05	SOUTH KOREA
-Klubi Parisit (III)	0.05	-	-	-	-	-	-	0.05	-Paris Club (III)
JAPONI	0.05	-	-	-	-	-	-	0.05	JAPAN
<b>GJITHSEJ (I+II+III)</b>	<b>281.57</b>	<b>35.40</b>	<b>52.10</b>	<b>11.76</b>	<b>16.25</b>	<b>7.87</b>	<b>1.36</b>	<b>406.32</b>	<b>TOTAL (I+II+III)</b>

\*\*) Deri me 30.06.2012, te dhena paraprake

\*\*) As of June 30, 2012, data are preliminary

TABELA III - TABLE III

**BORXHI I JASHEM\* AFATGJATE I SHQIPERISE  
TERHEQJET NE VITE SIPAS SEKTOREVE EKONOMIKE**

**LONG-TERM EXTERNAL PUBLIC DEBT\*  
DRAWINGS BY ECONOMIC SECTORS**

(in million EUR)

Sipas sektoreve ekonomike	Deri ne 31.12.2007 Up to 31.12.2007	2008	2009	2010	2011	3M 2012	6M 2012	GJITHSEJ TOTAL	By Economic Sectors
ADMINISTRATA SHTETERORE	32.88	-	-	-	-	-	-	32.88	Public Administration
ARESIMI	36.32	9.72	4.13	4.10	5.83	2.50	6.62	69.22	Education
BILANCI I PAGESAVE	18.35	-	-	-	-	-	-	18.35	Balance of Payment
BUJQESI, UJITJE	123.30	10.03	6.28	2.79	0.53	-	-	142.93	Agriculture-Irrigation
ENERGJETIKE	300.77	44.80	85.76	39.96	33.08	8.07	3.38	515.82	Energy
IMPORT MALLRASH DHE PAJISJESH	54.74	-	-	-	-	-	-	54.74	Import of Goods and Services
INDUSTRI E LEHTE	2.56	-	-	-	-	-	-	2.56	Light Industry
INFRASTRUKTURE URBANE DHE RURALE	48.76	7.21	4.78	1.96	3.28	-	0.35	66.35	Urban and Rural Infrastructure
KLUBI I PARISIT DHE RISKEDULIME TE TJERA	218.70	-	-	-	-	-	-	218.70	Paris Club & Other Rescheduling
MBESHETJE PER BUXHETIN	241.93	-	192.60	298.49	18.10	-	-	751.12	Budgetary Support
MBROJTJA	8.90	-	-	1.83	0.45	0.29	0.55	12.02	Defence
MBROJTJA E MJEDISIT	2.52	0.26	0.25	1.02	0.48	0.40	0.31	5.24	Environmental Protection
PYJE	7.22	-	-	-	-	-	-	7.22	Forestry
SHENDETESI	46.28	2.73	15.46	8.44	10.33	3.67	2.65	89.56	Health
SIGURIME SHOQ./TREGU I PUNES	13.20	2.83	0.17	0.31	0.73	0.56	0.08	17.87	Social Safety/Labor Market
STREHIMI	14.07	2.19	5.03	4.10	1.79	0.43	-	27.61	Housing
TELEKOMUNIKACION	14.69	-	-	-	-	-	-	14.69	Telecommunication
TRANSPORT	266.84	278.46	61.27	71.38	120.52	35.22	39.09	872.78	Transport
TRANSPORTI AJROR	23.64	-	-	-	-	-	-	23.64	Air Transport
TRANSPORTI HEKURUDHOR	3.10	-	-	-	-	-	-	3.10	Rail Transport
UJESJELLESA/KANALIZIME	105.56	13.80	17.71	22.16	21.38	6.65	5.85	193.11	Water Supply and Sewerage
ZHVILL. SEK.PRIVAT	42.10	5.13	0.00	11.23	1.61	0.87	10.78	71.73	Enterprise Sector Development
TE TJERA	26.53	-	-	-	-	-	-	26.53	Other
ZHVILLIMI RURAL	32.23	2.03	2.41	5.11	4.14	0.49	0.17	46.58	Rural Development
<b>GJITHSEJ</b>	<b>1,685.18</b>	<b>379.20</b>	<b>395.84</b>	<b>472.90</b>	<b>222.25</b>	<b>59.15</b>	<b>69.83</b>	<b>3,284.35</b>	<b>TOTAL</b>

\*) Perfshin borxhin shteteror dhe shteteror te garantuar

\*\*) Deri me 30.06.2012, te dhena paraprake

Ne kete table nuk perfshihet kredia e FMN-se

\*) Includes Central Government and Central Government Guaranteed debt

\*\*) As of June 30, 2012, data are preliminary

IMF credit is not included

**BORXHI I JASHEM\* AFATGJATE I SHQIPERISE**  
**BORXHI NETO SIPAS KREDITOREVE**

**LONG-TERM EXTERNAL PUBLIC DEBT\***  
**DEBT OUTSTANDING DISBURSED BY CREDITORS**

(in million EUR)

<b>Sipas kreditoreve</b>	<b>31.12.2008</b>	<b>31.12.2009</b>	<b>2010</b>	<b>2011</b>	<b>6M-2012</b>	<b>By Creditors</b>
<b>-Shumepalesh (I)</b>	<b>920.14</b>	<b>1,018.72</b>	<b>1,140.03</b>	<b>1,287.75</b>	<b>1,380.32</b>	<b>-Multilateral (I)</b>
CEB	33.16	54.84	76.17	100.56	106.35	CEB
EBRD	77.86	97.94	98.66	117.96	129.50	EBRD
EC	9.00	9.00	9.00	9.00	9.00	EC
EIB	134.17	155.55	175.49	196.94	217.63	EIB
IBRD	11.93	16.88	19.20	39.13	42.44	IBRD
IDA	577.31	587.69	636.83	662.67	679.00	IDA
IDB	38.63	51.70	66.04	97.15	130.01	IDB
IFAD	26.03	26.62	29.68	30.89	31.40	IFAD
OPEC	12.05	18.51	28.97	33.45	34.99	OPEC
<b>-Dypalesh (II)</b>	<b>357.68</b>	<b>408.85</b>	<b>466.23</b>	<b>506.73</b>	<b>526.10</b>	<b>-Bilateral (II)</b>
GJERMANI	116.96	139.27	147.79	158.85	159.30	GERMANY
GREQI	12.94	12.69	12.44	12.18	12.10	GREECE
AUSTRI		5.03	7.49	13.84	19.36	AUSTRIA
ITALI	129.87	147.79	181.66	204.99	218.35	ITALY
JAPONI	45.05	41.57	48.98	51.19	49.75	JAPAN
KINE	1.32	1.29	1.39	1.44	1.48	CHINA
KUVAIT	23.73	23.03	26.75	26.19	27.19	KUWAIT
NORVEGJI	6.14	4.29	2.78	0.96	-	NORWAY
HOLLANDE	4.40	9.98	10.60	9.74	9.10	NETHERLANDS
SPANJE	1.74	6.46	6.97	7.20	7.40	SPAIN
KOREA	15.52	17.44	19.38	19.33	20.20	SOUTH KOREA
ARABIA SAUDITE			-	0.83	1.87	SAUDI ARABIA
<b>Kreditore private (III)</b>	<b>230.00</b>	<b>422.60</b>	<b>530.00</b>	<b>530.00</b>	<b>530.00</b>	<b>Private Creditors (III)</b>
KREDITORE PRIVATE	230.00	422.60	230.00	230.00	230.00	PRIVATE CREDITORS
EUROBONDI			300.00	300.00	300.00	EUROBOND
<b>-Borxhi i riskeduluar (IV) (A+B)</b>	<b>70.75</b>	<b>88.94</b>	<b>83.23</b>	<b>79.45</b>	<b>80.31</b>	<b>-Rescheduled Debt (IV) (A+B)</b>
<b>-Klubi i Parisit (A)</b>	<b>27.21</b>	<b>25.60</b>	<b>26.58</b>	<b>26.25</b>	<b>26.24</b>	<b>-Paris Club (A)</b>
GJERMANI	0.33	-	-	-	-	GERMANY
ITALI	2.66	2.49	2.41	2.27	2.20	ITALY
RUSI	24.22	23.11	24.17	23.98	24.04	RUSSIA
<b>-Te tjere (B)</b>	<b>43.54</b>	<b>63.34</b>	<b>56.66</b>	<b>53.20</b>	<b>54.07</b>	<b>-Others (B)</b>
TURQI	11.65	9.87	9.01	7.61	6.93	TURKEY
GREQI		27.70	25.71	22.24	20.61	GREECE
KINE	16.41	13.75	12.37	10.22	9.19	CHINA
HUNGARI	5.04	3.94	3.19	2.19	2.25	HUNGARY
GJERMANI	1.47	0.74	-	-	-	GERMANY
RUMANIA	2.50	2.07	1.82	1.47	1.29	ROMANIA
SLLOVAKI	2.16	1.76	1.52	1.18	1.21	SLOVAK REP.
ÇEKI	4.31	3.51	3.03	2.35	2.41	CZECH REP.
SLOVENIA					2.30	SLOVENIA
BOSNIA-HERCEG					2.45	BOSNIA-HERCEG
SERBIA				5.94	5.43	SERBIA
<b>GJITHSEJ (I+II+III+IV)</b>	<b>1,578.57</b>	<b>1,939.11</b>	<b>2,219.49</b>	<b>2,403.93</b>	<b>2,516.73</b>	<b>TOTAL (I+II+III+IV)</b>

\*) Përfshin borxhin shtetëror dhe shtetëror të garantuar  
 Në këtë tabelë nuk përfshihet kredia e FMN-se

\*\*) Deri më 30.06.2012, të dhëna paraprake

\*) Includes Central Government and Central Government Guaranteed debt  
 IMF credit is not included

\*\*) As of June 30, 2012, data are preliminary



**BORXHI I JASHEM I QEVERISE QENDRORE  
BORXHI NETO SIPAS KREDITOREVE**

**CENTRAL GOVERNMENT EXTERNAL DEBT  
DEBT OUTSTANDING DISBURSED BY CREDITORS**

(in million EUR)

Sipas kreditoreve	31.12.2008	31.12.2009	2010	2011	6M-2012	By Creditors
-Shumepalesh (I)	813.64	890.11	1,017.75	1,169.35	1,260.40	-Multilateral (I)
CEB	33.16	54.84	76.17	100.56	106.35	CEB
EBRD	30.42	37.78	43.22	64.64	73.03	EBRD
EC	9.00	9.00	9.00	9.00	9.00	EC
EIB	75.12	87.10	108.65	131.86	154.18	EIB
IBRD	11.93	16.88	19.20	39.13	42.44	IBRD
IDA	577.31	587.69	636.83	662.67	679.00	IDA
IDB	38.63	51.70	66.04	97.15	130.01	IDB
IFAD	26.03	26.62	29.68	30.89	31.40	IFAD
OPEC	12.05	18.51	28.97	33.45	34.99	OPEC
-Dypalesh (II)	208.96	245.72	301.17	339.67	361.30	-Bilateral (II)
GJERMANI	71.17	76.78	83.39	93.77	96.21	GERMANY
GREQI	4.14	3.89	3.64	3.38	3.30	GREECE
AUSTRI	-	5.03	7.49	13.84	19.36	AUSTRIA
ITALI	83.42	103.14	142.52	164.93	178.18	ITALY
JAPONI	12.89	11.83	15.65	17.40	17.21	JAPAN
KINE	1.32	1.29	1.39	1.44	1.48	CHINA
KUVAIT	23.73	23.03	26.75	26.19	27.19	KUWAIT
NORVEGJI	6.14	4.29	2.78	0.96	-	NORWAY
HOLLAND	4.40	9.98	10.60	9.74	9.10	NETHERLANDS
SPANJA	1.74	6.46	6.97	7.20	7.40	SPAIN
Arabia Saudite				0.83	1.87	Saudi Arab
Kreditore Private (III)	230.00	422.60	530.00	530.00	530.00	Private Creditors(III)
KREDITORE PRIVATE	230.00	422.60	230.00	230.00	230.00	PRIVATE CREDITORS
EUROBONDI			300.00	300.00	300.00	EUROBOND
-Borxhi i riskedeluar (IV) (A+B)	70.75	88.94	83.23	79.45	80.31	-Rescheduled Debt (IV) (A+B)
-Klubi i Parisit (A)	27.21	25.60	26.58	26.25	26.24	-Paris Club (A)
GJERMANI	0.33	-	-	-	-	GERMANY
ITALI	2.66	2.49	2.41	2.27	2.20	ITALY
RUSI	24.22	23.11	24.17	23.98	24.04	RUSSIA
-Te tjere (B)	43.54	63.34	56.66	53.20	54.07	-Others (B)
TURQI	11.65	9.87	9.01	7.61	6.93	TURKEY
GREQI	-	27.70	25.71	22.24	20.61	GREECE
KINE	16.41	13.75	12.37	10.22	9.19	CHINA
HUNGARI	5.04	3.94	3.19	2.19	2.25	HUNGARY
GJERMANI	1.47	0.74	-	-	-	GERMANY
RUMANIA	2.50	2.07	1.82	1.47	1.29	ROMANIA
SLLOVAKI	2.16	1.76	1.52	1.18	1.21	SLOVAK REP.
ÇEKI	4.31	3.51	3.03	2.35	2.41	CZECH REP.
SLOVENIA					2.30	SLOVENIA
BOSNIA-HERCEG					2.45	BOSNIA-HERCEG
SERBIA				5.94	5.43	SERBIA
<b>GJITHSEJ (I+II+III+IV)</b>	<b>1,323.35</b>	<b>1,647.37</b>	<b>1,932.15</b>	<b>2,118.47</b>	<b>2,232.01</b>	<b>TOTAL (I+II+III+IV)</b>

Ne kete table nuk perfshihet kredia e FMN-se

\*\*) Deri me 30.06.2012, te dhena paraprake

IMF credit is not included

\*\*\*) As of June 30, 2012, data are preliminary

**BORXHI I JASHEM I GARANTUAR NGA QEVERIA QENDRORE  
BORXHI NETO SIPAS KREDITOREVE**

**CENTRAL GOVERNMENT GUARANTEED DEBT  
DEBT OUTSTANDING DISBURSED BY CREDITORS**

(in million EUR)

Sipas kreditoreve	31.12.2008	31.12.2009	2010	2011	6M-2012	By Creditors
-Shumepalesh (I)	106.50	128.61	122.28	118.40	119.92	-Multilateral (I)
EBRD	47.44	60.16	55.44	53.32	56.47	EBRD
EIB	59.06	68.45	66.84	65.08	63.45	EIB
-Dypalesh (II)	148.72	163.13	165.06	167.06	164.80	-Bilateral (II)
GJERMANI	45.79	62.49	64.40	65.08	63.09	GERMANY
GREQI	8.80	8.80	8.80	8.80	8.80	GREECE
ITALI	46.45	44.65	39.14	40.06	40.17	ITALY
JAPONI	32.15	29.74	33.34	33.79	32.54	JAPAN
KOREA	15.52	17.44	19.38	19.33	20.20	SOUTH KOREA
<b>GJITHSEJ (I+II)</b>	<b>255.21</b>	<b>291.73</b>	<b>287.34</b>	<b>285.46</b>	<b>284.72</b>	<b>TOTAL (I+II)</b>

\*\*) Deri me 30.06.2012, te dhena paraprake

\*\*) As of June 30, 2012, data are preliminary

**BORXHI I JASHEM\* AFATGJATE I SHQIPERISE**  
**BORXHI NETO SIPAS MONEDHAVE**

**LONG-TERM EXTERNAL PUBLIC DEBT\***  
**DOD BY CURRENCY**

(in million EUR)

Monedha Currency	2009		2010		2011		6M-2012	
	Amount	%	Amount	%	Amount	%	Amount	%
ACU	51.70	2.67	66.04	2.98	69.95	2.91%	71.36	2.84%
EUR	1,069.99	55.18	1,265.86	57.03	1,380.71	57.44%	1,450.00	57.61%
JPY	41.56	2.14	48.98	2.21	51.20	2.13%	49.75	1.98%
KWD	23.03	1.19	26.74	1.20	26.19	1.09%	27.19	1.08%
KRW	17.44	0.90	19.38	0.87	19.33	0.80%	20.20	0.80%
SAR					0.83	0.03%	1.87	0.07%
SDR	614.31	31.68	666.51	30.03	693.56	28.85%	710.41	28.23%
USD	121.07	6.24	125.99	5.68	162.17	6.75%	185.95	7.39%
<b>TOTAL</b>	<b>1,939.10</b>	<b>100.00</b>	<b>2,219.49</b>	<b>100.00</b>	<b>2,403.94</b>	<b>100.00%</b>	<b>2,516.73</b>	<b>100.00%</b>

\*) Përfshin borxhin e jashtëm shtetëror dhe shtetëror të garantuar

\*\*) Deri më 30.06.2012, të dhëna paraprake

Nuk përfshihet kredia e FMN-se

\*) Includes external public and external publicly guaranteed debt

\*\*) As of June 30, 2012, data are preliminary

IMF credit is not included

**BORXHI I JASHEM\* AFATGJATE I SHQIPERISE  
PJESA E PATERHEQUR E KREDIVE**

**LONG-TERM EXTERNAL PUBLIC DEBT\*  
COMMITTED UNDISBURSED BALANCE**

(in million EUR)

Sipas kreditoreve	2008	2009	2010	2011	6M-2012	By Creditors
<b>-Shumepalesh (I)</b>	<b>431.38</b>	<b>406.41</b>	<b>392.74</b>	<b>467.13</b>	<b>462.43</b>	<b>-Multilateral (I)</b>
CEB	38.85	62.01	40.75	15.63	9.60	CEB
EBRD	75.20	77.95	63.58	77.52	117.88	EBRD
EIB	110.06	81.88	104.60	74.95	49.12	EIB
IBRD	22.97	23.50	21.45	18.33	29.56	IBRD
IDA	122.26	100.27	85.99	67.63	56.69	IDA
IDB	42.98	34.97	54.10	196.46	168.13	IDB
IFAD	4.11	9.02	7.40	6.32	5.89	IFAD
OPEC	14.96	16.82	14.89	10.29	25.56	OPEC
<b>-Dypalesh (II)</b>	<b>354.21</b>	<b>311.86</b>	<b>372.88</b>	<b>385.67</b>	<b>398.29</b>	<b>-Bilateral (II)</b>
GJERMANI	54.96	49.23	125.18	153.39	149.46	GERMANY
GREQI		-	-	-	-	GREECE
ITALI	181.23	157.98	118.79	89.51	74.32	ITALY
JAPONI	87.55	85.88	100.00	106.90	106.21	JAPAN
KUVAIT	17.47	14.07	13.42	13.06	11.73	KUWAIT
AUSTRI		2.46	5.96	14.22	8.69	AUSTRIA
ARABIA SAUDITE			9.00	8.45	7.73	SAUDI ARABIA
HOLLANDE	8.05	2.15	0.43	0.03	0.02	NETHERLANDS
KINA	0.10	0.10	0.11	0.11	0.11	CHINA
SPANJA	4.87	-	-	-	-	SPAIN
KOREA	-	-	-	-	-	SOUTH KOREA
ABU DABI	112.31	-	-	-	40.02	
<b>GJITHSEJ (I+II)</b>	<b>785.59</b>	<b>718.28</b>	<b>765.62</b>	<b>852.80</b>	<b>860.72</b>	<b>TOTAL (I+II)</b>

\*) Përfshin borxhin shtetëror dhe shtetëror të garantuar

\*\*\*) Deri më 30.06.2012, të dhëna paraprake

Ne këto tabela nuk përfshihen kredia e FMN-se

\*) Includes Central Government and Central Government Guaranteed debt

\*\*) As of Jun. 30, 2012, data are preliminary

IMF credit is not included

**BORXHI I JASHEM I QEVERISE QENDRORE  
PJESA E PATERHEQUR E KREDIVE**

**CENTRAL GOVERNMENT EXTERNAL DEBT  
COMMITTED UNDISBURSED BALANCE**

(in million EUR)

Sipas kreditoreve	2008	2009	2010	2011	6M-2012	By Creditors
-Shumepalesh (I)	364.11	372.24	364.35	447.86	451.41	-Multilateral (I)
CEB	38.85	62.01	40.75	15.63	9.60	CEB
EBRD	18.92	43.79	35.18	58.25	106.86	EBRD
EIB	99.06	81.88	104.60	74.95	49.12	EIB
IBRD	22.97	23.50	21.45	18.33	29.56	IBRD
IDA	122.26	100.27	85.99	67.63	56.69	IDA
IDB	42.98	34.97	54.10	196.46	168.13	IDB
IFAD	4.11	9.02	7.40	6.32	5.89	IFAD
OPEC	14.96	16.82	14.89	10.29	25.56	OPEC
-Dypalesh (II)	309.17	285.81	352.82	372.74	386.33	-Bilateral (II)
GJERMANI	25.14	38.40	120.23	153.09	149.16	GERMANY
GREQI	-	-	-	-	-	GREECE
ITALI	166.01	142.76	103.68	76.88	62.66	ITALY
JAPONI	87.55	85.88	100.00	106.90	106.21	JAPAN
KUVAIT	17.47	14.07	13.42	13.06	11.73	KUWAIT
AUSTRI	-	2.46	5.96	14.22	8.69	AUSTRIA
HOLLANDE	8.05	2.15	0.43	0.03	0.02	NETHERLANDS
KINA	0.10	0.10	0.11	0.11	0.11	CHINA
ARABIA SAUDITE	-	-	9.00	8.45	7.73	SAUDI ARABIA
SPANJA	4.87	-	-	-	-	SPAIN
AbuDhabi	-	-	-	-	40.02	AbuDhabi
<b>GJITHSEJ (I+II)</b>	<b>673.28</b>	<b>658.06</b>	<b>717.17</b>	<b>820.60</b>	<b>837.74</b>	<b>TOTAL (I+II)</b>

\*\*) Deri me 30.06.2012, te dhena paraprake  
Ne kete tabelë nuk përfshihen kredia e FMN-se

\*\*) As of Jun. 30, 2012, data are preliminary  
IMF credit is not included

**BORXHI I JASHEM I GARANTUAR NGA QEVERIA QENDRORE  
PJESA E PATERHEQUR E KREDIVE**

**CENTRAL GOVERNMENT GUARANTEED DEBT  
COMMITTED UNDISBURSED BALANCE**

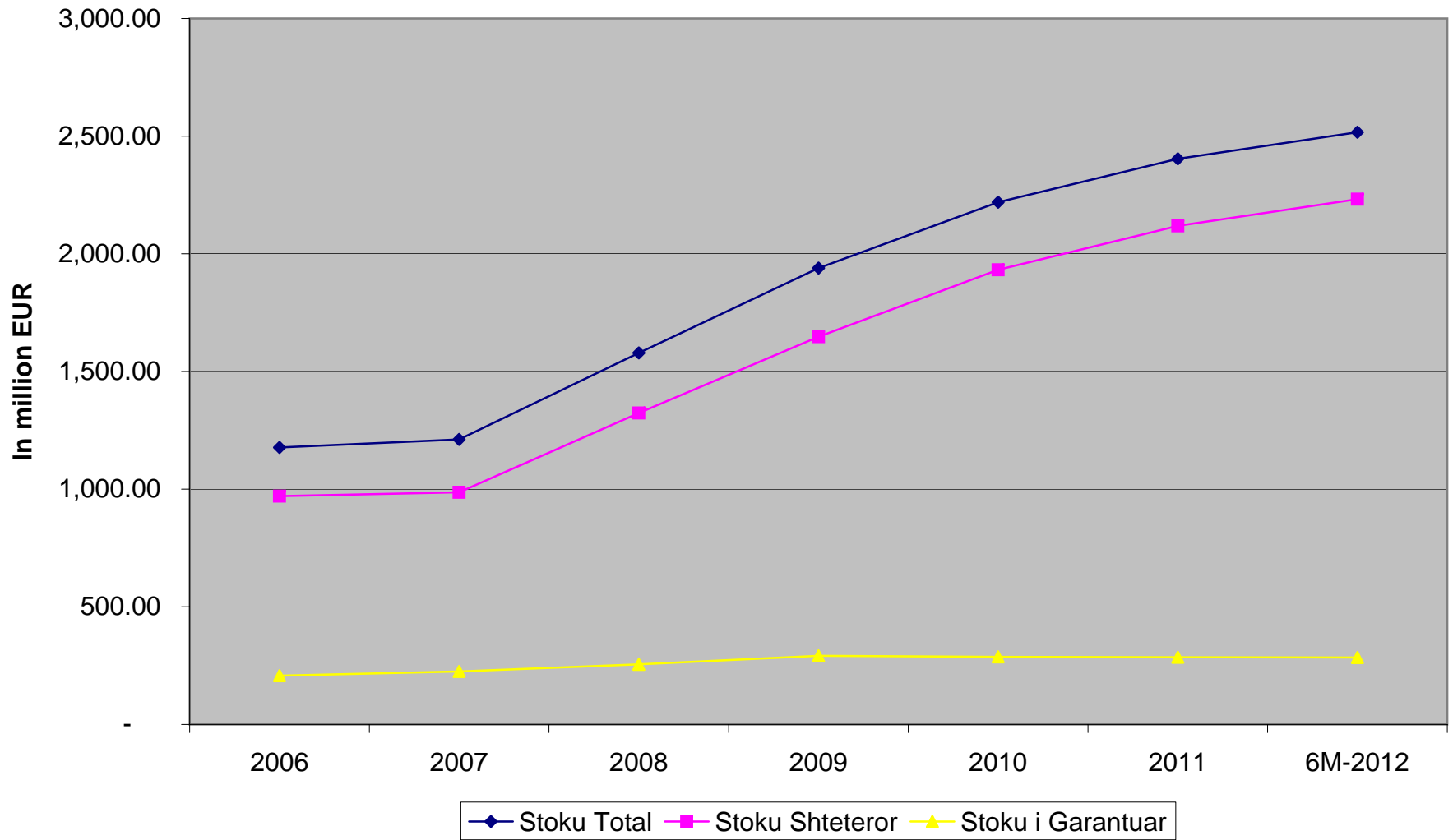
(in million EUR)

Sipas kreditoreve	2008	2009	2010	2011	6M-2012	By Creditors
-Shumepalesh (I)	67.27	34.17	28.40	19.27	11.02	-Multilateral (I)
EBRD	56.27	34.17	28.40	19.27	11.02	EBRD
EIB	11.00	-	-	-	-	EIB
-Dypalesh (II)	45.04	26.05	20.05	12.93	11.96	-Bilateral (II)
GJERMANI	29.82	10.83	4.95	0.30	0.30	GERMANY
ITALI	15.22	15.22	15.11	12.63	11.66	ITALY
KOREA	-	-	-	-	-	SOUTH KOREA
<b>GJITHSEJ (I+II)</b>	<b>112.31</b>	<b>60.22</b>	<b>48.45</b>	<b>32.20</b>	<b>22.98</b>	<b>TOTAL (I+II)</b>

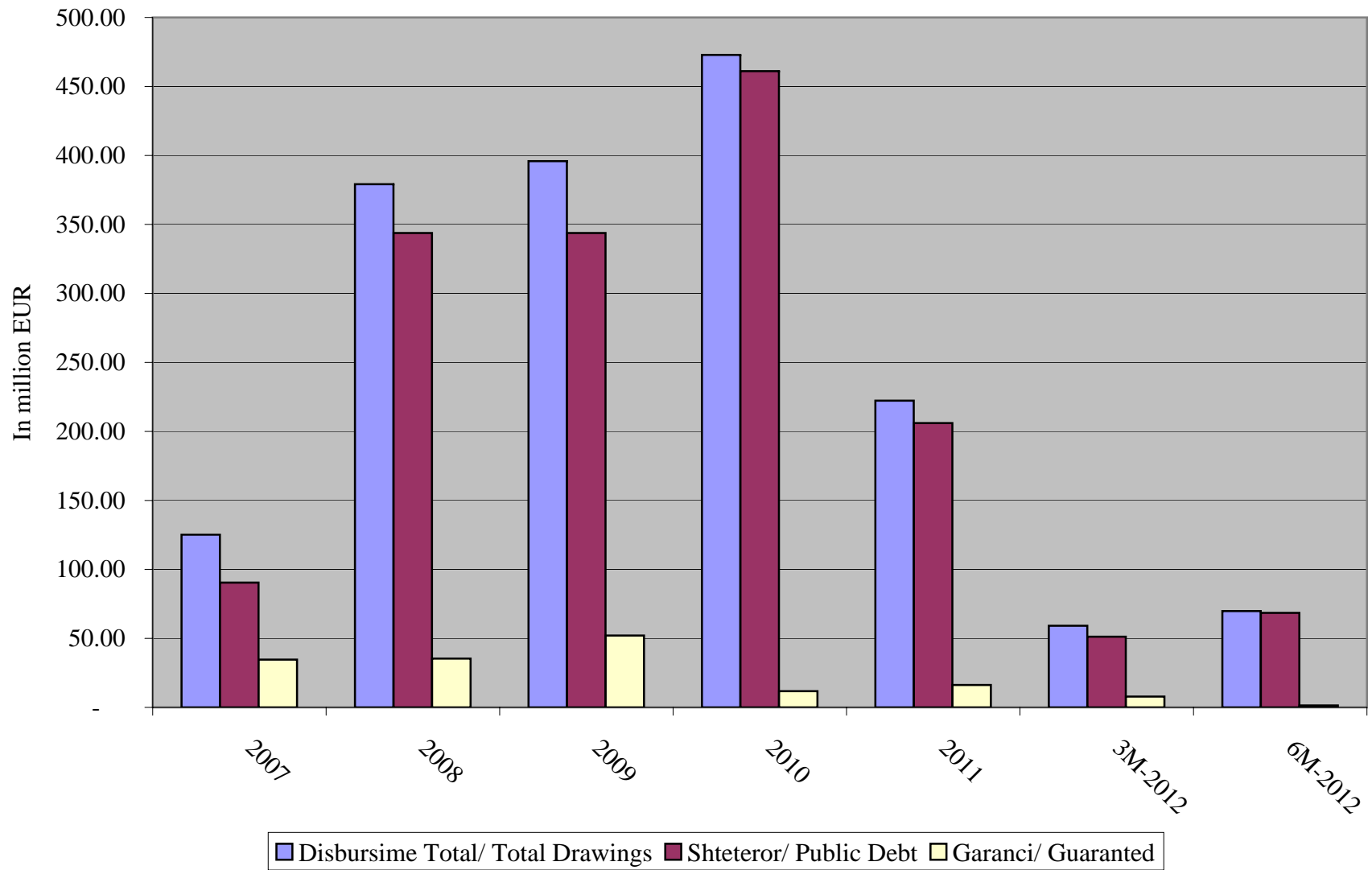
\*\*) Deri me 30.06.2012, te dhena paraprake

\*\*) As of Jun. 30, 2012, data are preliminary

## Paraqitja grafike e ecurise se stokut te borxhit te jashtem External Outstanding Debt

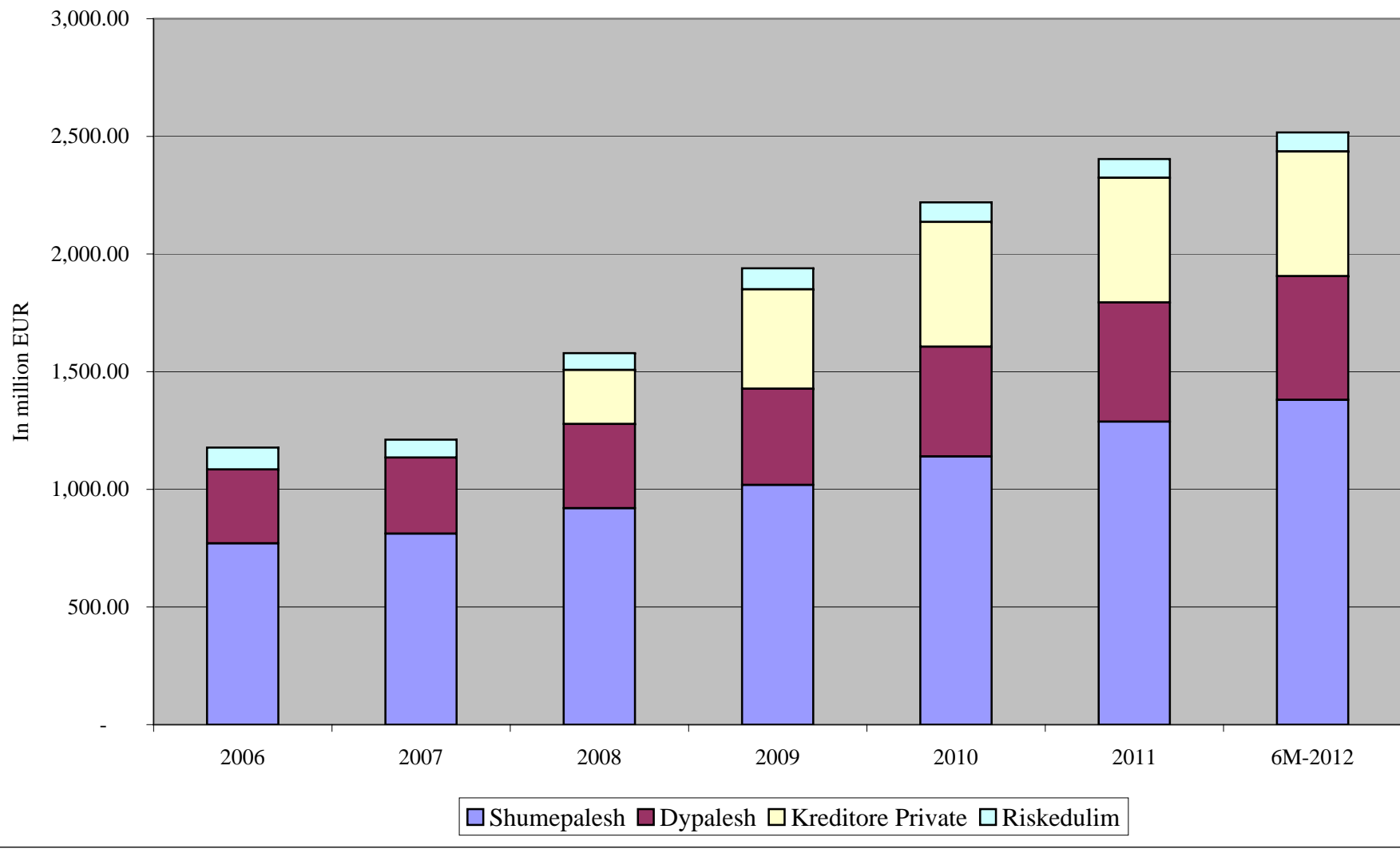


**Ecuria e Disbursimeve te Borxhit te Jashtem**  
**External Debt Drawings**

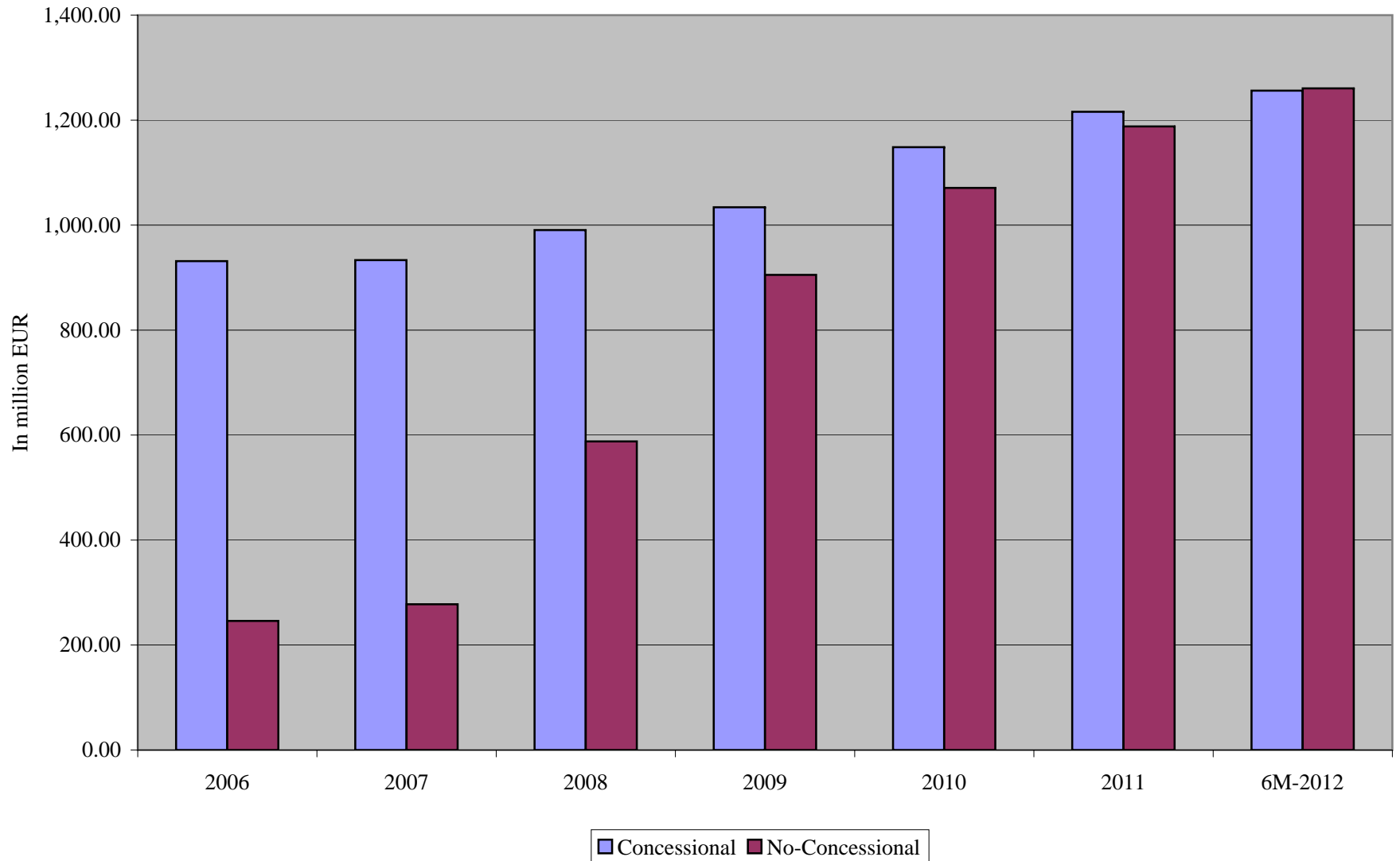




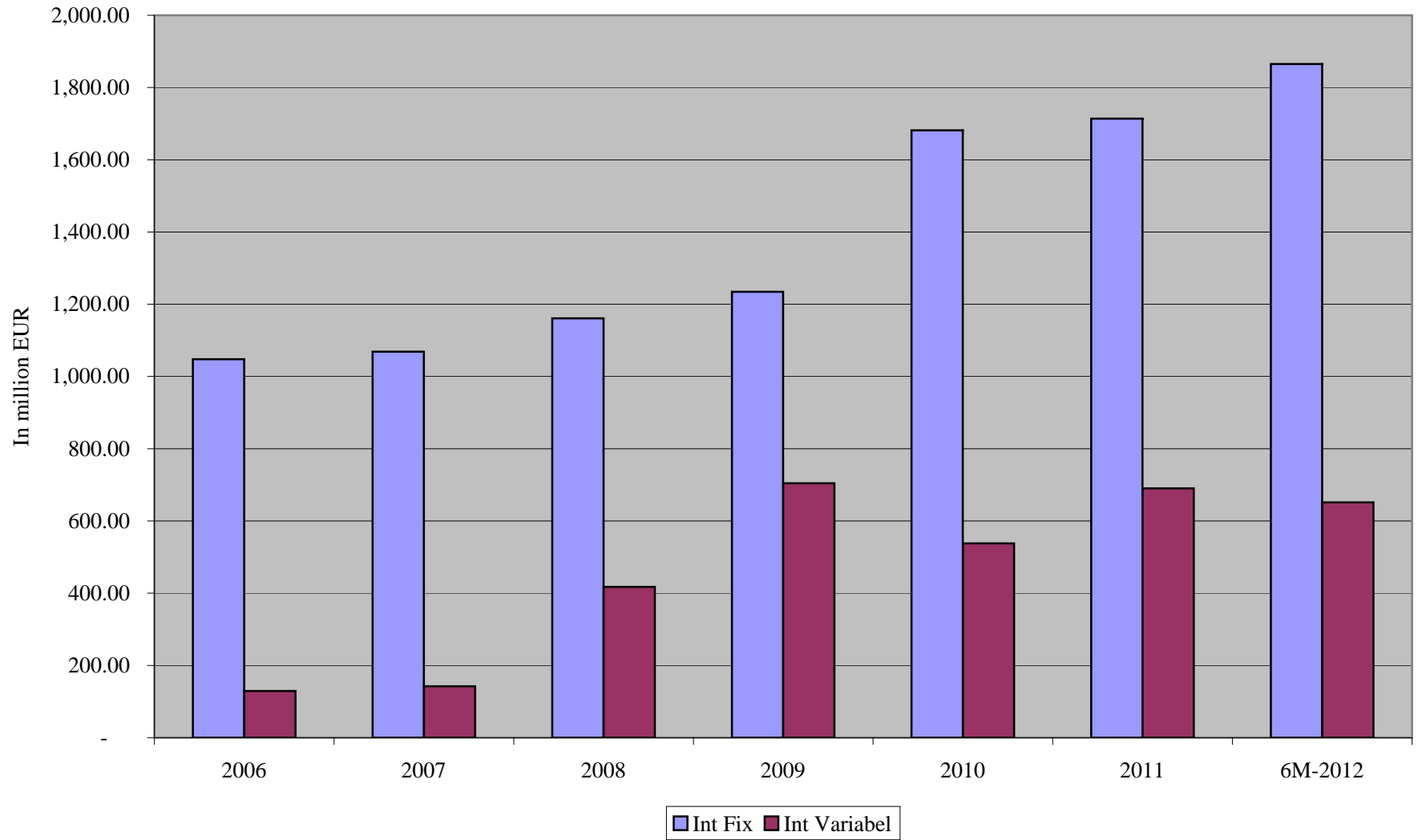
**Stoku i Borxhit te Jashtem sipas Kreditoreve**  
**Debt Outstanding by Creditor Type**



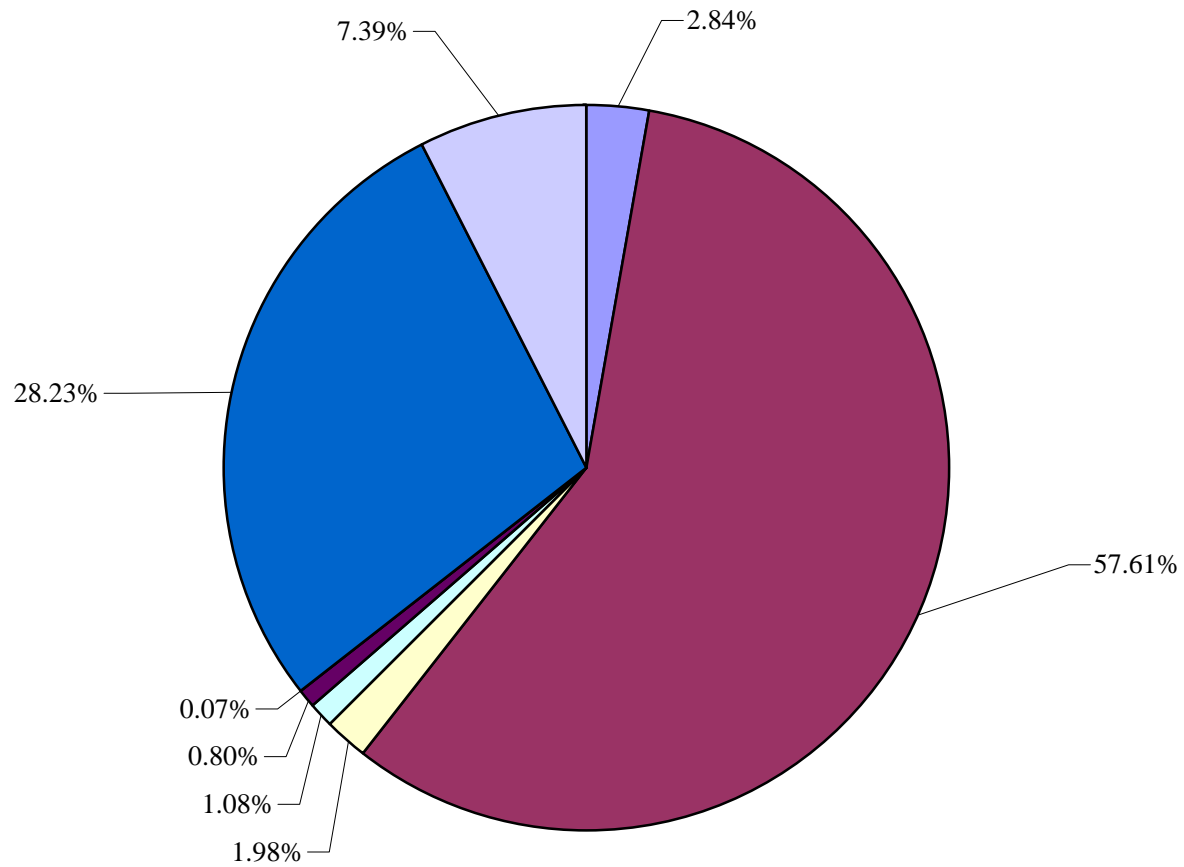
**Stoku I borxhit te jashtem sipas koncesionalitetit**  
**Debt Outstanding by concessionality**



**Stoku i borxhit te jashtem sipas interesit**  
**Debt Outstanding by Interest Type**



**Stoku i borxhit te jashtem sipas monedhave 3M-2012**  
**External Debt Outstanding by Currency 3M-2012**



ACU EUR JPY KWD KRW SAR SDR USD