



REPUBLIKA E SHQIPERISE
MINISTRIA E FINANCAVE
DREJTORIA E PERGJITHSHME E MENAXHIMIT TE BORXHIT PUBLIK



MINISTRIA E FINANCAVE

Treguesit e Borxhit – Viti 2010

Debt Indicators as of Dec 31, 2010

Ecuria e borxhit publik gjate vitit 2010

Ne fund te vitit 2010 stoku i borxhit publik arriti ne 715.5 miliarde leke ose 58.52% e PBB. Ky stok perbehet nga (i) borxhi i Qeverise Qendrore 58.51% te PBB dhe (ii) borxhi i pushtetit lokal me 0.01% te PBB.

Mbeshtetur ne ligjin per "Huamarrjen e qeverisjes vendore", gjate vitit 2010 disa bashki e komuna filluan te marrin hua ne tregun e brendshem per financimin e projekteve te ndryshme ne infrastrukture.

Nderkaq huamarrja e Qeverise Qendrore ka vazhduar ne perputhje me nevojat e buxhetit. Ne krahasim me vitin 2009, stoku i borxhit publik paraqitet me renie prej 1.15% ne raport me PBB.

Evoluimi i struktures se stokut te borxhit

Borxhi i Qeverise Qendrore perbehet nga *borxhi i brendshem*, qe ne fund te vitit 2010 ze rreth 57% te stokut dhe *borxhi i jashtem* me 43% te stokut. Keshtu edhe gjate vitit 2010 ndryshimi i struktures borxh i brendshem/borxh i jashtem ka vazhduar ne favor te ketij te fundit. Ne fund te vitit 2009 ky raport ishte 60.8% borxh i brendshem dhe 39.2% borxh i jashtem.

Borxhi i brendshem

98.6% e stokut te borxhit te brendshem perbehet nga borxhi shteteror dhe 1.4% nga borxhi i garantuar. Edhe gjate 2010 Ministria e Financave ka vazhduar politiken e saj te emetimit kryesisht te instrumentave afatgjate te borxhit. Per rrjedhoje, struktura e borxhit te brendshem shteteror sipas instrumentave ka ardhur duke u permiresuar ne favor te instrumentave afatgjate te cilet perfaqesojne 42.4% te tij.

Srukтура e mbajtesve te borxhit te brendshem shteteror gjithashtu ka pesuar ndryshime pozitive. 99% e mbajtesve te tij jane rezidente. Me e theksuar ka qene gjate ketij viti rritja e peshes specifike te individeve, te cilet perfaqesojne 12% te mbajtesve te borxhit te brendshem shteteror.

Persa i perket perberjes sipas monedhave, borxhi i brendshem shteteror perbehet ne masen 99.1% nga borxhi ne leke.

Borxhi i jashtem

Ne stokun e borxhit te jashtem, i cili ne fund te vitit 2010 arriti ne 307,985 milion leke, borxhi shteteror perfaqeson 87% te tij, ndersa borxhi i garantuar 13%.

Nje veçori e huamarrjes se huaj gjate vitit 2010 eshte emetimi per here te pare i eurobondit ne tregun e huaj te kapitaleve, duke sjelle nje *diversifikim te instrumentave te huamarrjes se huaj*. Te ardhurat nga eurobondi u perdoren per parapagimin e kredise sindikale te vitit 2009 si edhe per plotesimin e nevojave per financimin e buxhetit. Gjate ketij viti ka vazhduar ecuria pozitive e disbursimeve per projektet e financuara nga kredi te huaja.

Struktura e borxhit te jashtem sipas koncesionalitetit ka vazhduar tendencen e rritjes se stokut te borxhit me terma tregtare, i cili perfaqeson 48.3% te stokut, kundrejt 46.7% ne fund te vitit 2009.

Struktura e stokut sipas normes se interesit, ka pesuar ndryshime ne favor te borxhit me interes fiks, i cili perfaqeson 75.8% te stokut te borxhit te jashtem, kundrejt 63.7% qe perfaqesonte ne fund te vitit 2009. Ky ndryshim ka ardhur kryesisht si rezultat i parapagimit ne vitin 2010 te kredise sindikale te 2009, gje e cila solli edhe ulje te riskut te normave te interesit.

Persa i perket struktures se stokut te borxhit te jashtem sipas monedhave, EUR eshte monedha kryesore me 68.3% te stokut, e pasuar nga USD me 18.3% (ketu kemi parasysh edhe ndikimin e borxhit ne SDR dhe ndarjen e tij sipas monedhave perberese te SDR). Ky fakt tregon se stoku i borxhit te jashtem eshte mjaft i ndjeshem ndaj ndryshimeve te kursit te kembimit Leke/EURO.

Ecuria e kostos se sherbimit te borxhit

Megjithese gjate vitit 2010 u vu re nje ulje e normave te interesit te huamarrjes se brendshme ne pergjithesi, shtimi i peshes se instrumentave afatgjate si edhe normat me te larta qe u vune re ne vitin 2009 dhe vaçenerisht ne pjesen e dyte te vitit 2008, bene qe shpenzimet per interesat e brendshme ne vitin 2010 te jene rreth 13.3% me te larta se ne vitin 2009. Edhe shpenzimet per interesat e borxhit te jashtem kane patur rritje ne masen 23%, si rezultat i uljes se nivelit te koncesionalitetit te borxhit. Raporti i shpenzimeve per interesa me PBB nga 3.17% e PBB ne vitin 2009, arriti ne 3.4% ne fund te vitit 2010.

Stoku i Borxhit Publik
Public Debt Stock

million ALL

	2,009	2010	
Borxhi Publik	682,404	715,504	Public Debt Stock
- Borxhi i Qeverise Qendrore	682,404	715,357	Central Government Debt Stock
- Borxhi i pushtetit lokal	0	147	Local Government Debt Stock

Borxhi i Qeverise Qendrore
Central Government Debt Stock

million ALL

	2,009	2010	
Borxhi i Qeverise Qendrore, nga i cili:	682,404	715,357	Central Government Debt Stock, of which:
-Borxhi i brendshem	415,028	407,372	-Domestic Debt
-Borxhi i jashtem*	267,376	307,985	-Foreign Debt

*) Te dhenat per gjendjen me 31.12.2010 jane paraprake

*) Preliminary data for Dec. 31, 2010

Borxhi i Qeverise Qendrore
Central Government Debt Stock

million ALL

	2,009	2010	
Borxhi i Qeverise Qendrore, nga i cili:	682,404	715,357	Central Government Debt Stock, of which:
-Borxhi i Qeverise	636,629	669,932	-Central Government Debt
-Borxhi i garantuar nga Qeveria	45,775	45,425	-Central Government Guaranteed Debt

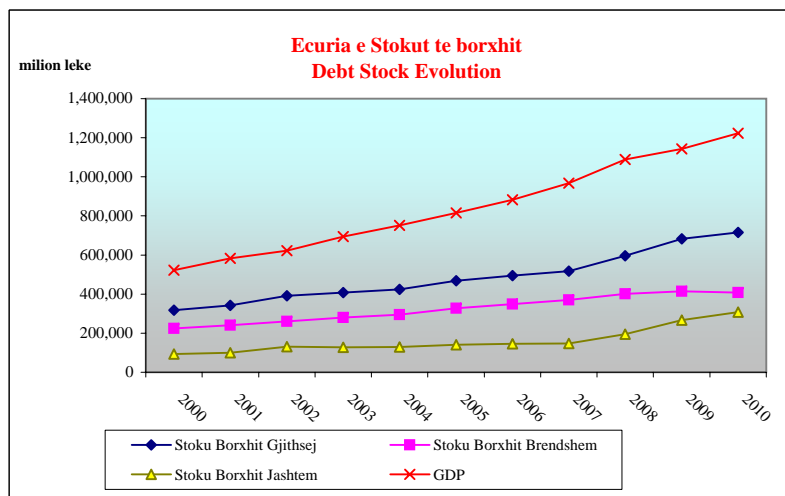
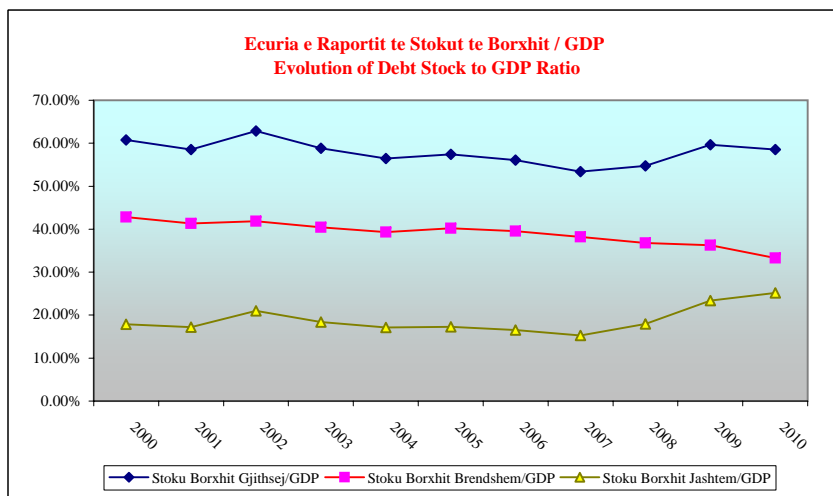
*) Te dhenat per gjendjen me 31.12.2010 jane paraprake

*) Preliminary data for Dec. 31, 2010

Stoku i Borxhit te Qeverise qendrore
Central Government Debt Stock

milion ALL

	2000	2001	2002	2003	2004	2005	2006	2007	2008	2009	2010	
Stoku Borxhit Gjithsej	317,659	341,521	391,308	408,300	423,965	467,974	494,637	516,923	595,786	682,404	715,357	Total Debt Stock
Stoku Borxhit Brendshem	224,120	241,161	260,752	280,767	295,200	327,353	348,935	369,536	400,456	415,028	407,372	Domestic Debt Stock
Stoku Borxhit Jashtem	93,539	100,360	130,556	127,533	128,765	140,621	145,702	147,387	195,330	267,376	307,985	External Debt Stock
GDP	523,043	583,369	622,711	694,098	751,022	814,797	882,209	967,670	1,088,132	1,143,609	1,222,631	GDP
Stoku Borxhit Gjithsej/GDP	60.73%	58.54%	62.84%	58.82%	56.45%	57.43%	56.07%	53.42%	54.75%	59.67%	58.51%	Total Debt Stock/GDP
Stoku Borxhit Brendshem/GDP	42.85%	41.34%	41.87%	40.45%	39.31%	40.18%	39.55%	38.19%	36.80%	36.29%	33.32%	Domestic Debt Stock/GDP
Stoku Borxhit Jashtem/GDP	17.88%	17.20%	20.97%	18.37%	17.15%	17.26%	16.52%	15.23%	17.95%	23.38%	25.19%	External Debt Stock/GDP



Borxhi i Qeverise Qendrore
Gross Central Government Debt

ALL millions

	2010Q1	2010Q2	2010Q3	2010Q4	
Gross Central Government Debt					Gross Central Government Debt
Sipas Maturimit dhe Instrumentave	639,059	658,280	666,019	669,932	By maturity and type of instrument:
Afat shkurtër sipas maturimit origjinal	239,025	247,988	250,078	231,436	Short-term by original maturity
Letra me vlere te borxhit	239,025	247,988	250,078	231,436	Debt securities
Kredi					Loans
Afat gjate sipas maturimit origjinal	400,034	410,292	415,941	438,497	Long-term, by original maturity:
Me shlyerje brenda nje viti	38,020	42,192	37,912	38,082	With payment due in one year or less:
Letra me vlere te borxhit	37,700	41,907	37,407	37,407	Debt securities
Kredi	320	285	505	675	Loans
Me shlyerje mbi nje vit	362,014	368,100	378,030	400,414	With payment due in more than one year:
Letra me vlere te borxhit	122,372	120,365	130,365	174,609	Debt securities
Kredi	239,642	247,735	247,665	225,805	Loans
Borxhi gjithsej	639,059	658,280	666,019	669,932	Total gross debt
Letra me vlere te borxhit	399,097	410,260	417,850	443,452	Debt securities
Kredi	239,962	248,020	248,169	226,480	Loans
Sipas monedhes se emetimit					By currency of denomination:
Monedhe kombetare	399,097	406,849	414,389	439,983	Domestic currency
Monedhe te huaj	239,962	251,431	251,631	229,950	Foreign currency
Sipas rezidences se kreditoreve					By residence of the creditor:
Kreditore vendas	396,922	406,378	413,968	397,911	Domestic creditors
Kreditore te huaj	242,137	251,902	252,051	272,021	External creditors
Memorandum item:					Memorandum item:
Borxhi i Brendshem i garantuar	5,568	5,458	5,538	5,551	Domestic Guaranteed Debt
Borxhi i jashtem i garantuar	41,190	40,423	40,284	39,874	External Guaranteed Debt
Borxhi i garantuar gjithsej	46,758	45,881	45,822	45,425	Total Guaranteed Debt

Financimi i brendshem i Deficitit Buxhetor Viti 2010
Domestic Deficit Financing as of Dec 31, 2010

mije leke

mije ALL

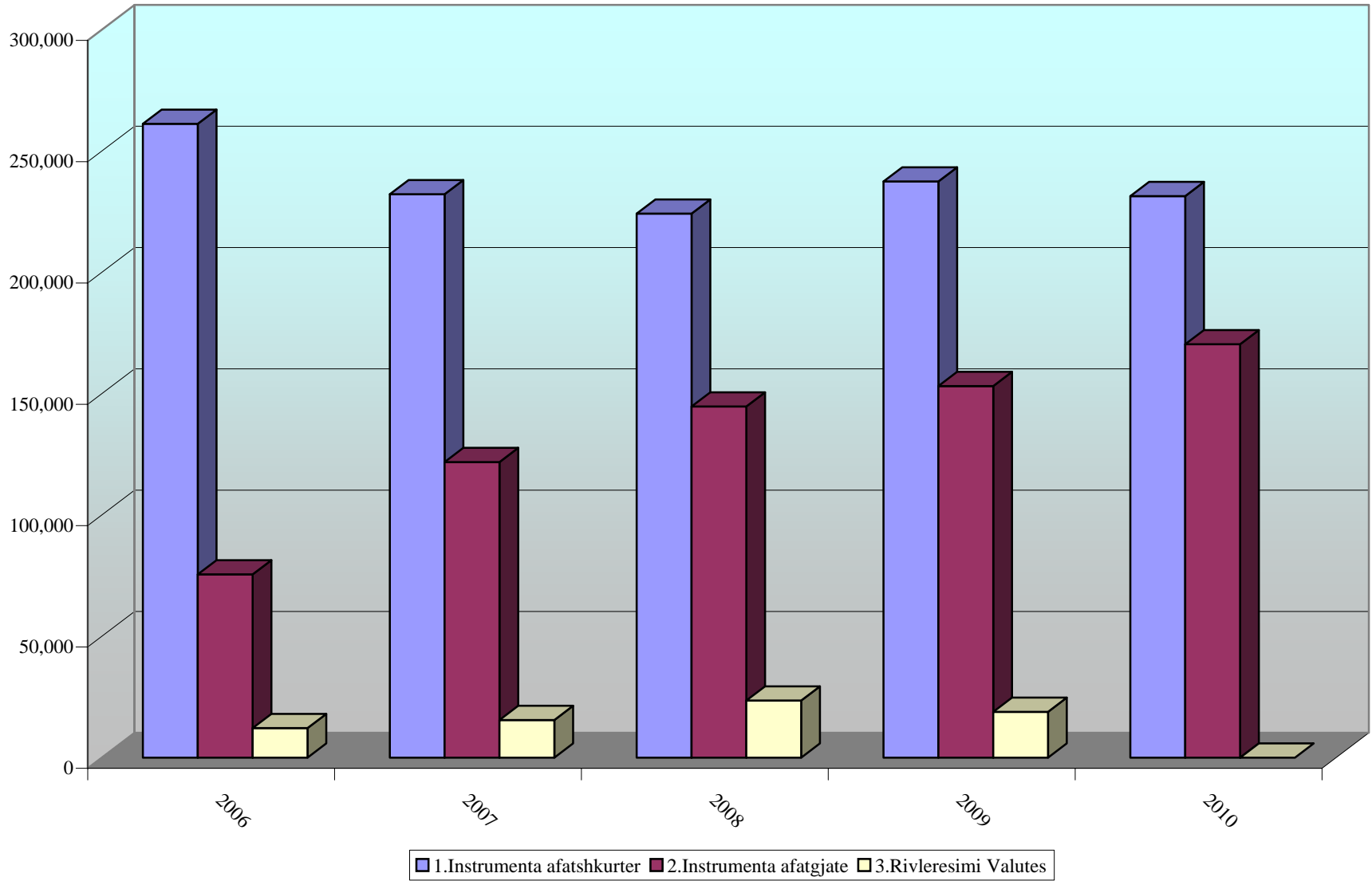
Periudha	viti 2010	
Financimi i Deficitit	11,136,940.53	Deficit financing
Nga i cili:		of which :
Instrumenta Afatshkurter	-6,086,259.47	Short term instruments
- Bono Thesari Leke	-9,350,563.81	Tbills (leke)
- Bono Thesari Euro	3,264,304.34	Tbills (EURO)
- Kredi Direkte	0.00	Credit from BOA
Instrumenta Afatgjate	17,223,200.00	Long term instruments
- Oblig.e qeverise 2 vjecare	5,710,000.00	2 y bonds
- Oblig.e qeverise 3 vjecare	13,200.00	3 y bonds
- Oblig.e qeverise 5 vjecare	11,500,000.00	5 y bonds
- Oblig.e qeverise 7 vjecare	0.00	7 y bonds
GDP	1,222,631,000	GDP
Financimi i Deficitit / GDP	0.91%	Deficit financing / GDP
Instrumenta Afatshkurter / GDP	-0.50%	Short term instruments / GDP
Instrumenta Afatgjate / GDP	1.41%	Long term instruments / GDP

Borxhi i Brendshem sipas instrumentave
Domestic Debt Stock by Instruments

milion ALL

	31,12,2007		31,12,2008		31.12.2009		31.12.2010		
	Purchase value	%	Purchase value	%	Purchase value	%	Purchase value	%	
Stoku I Borxhit Gjithsej	369,536		400,456		415,028		407,372		Total Debt Stock
I.Borxhi Shteteror	369,536	100.00	395,504	98.76	409,501	98.67	401,821	98.64	I.Public Debt
1.Instrumenta afatshkurter	232,211	62.84	224,224	55.99	237,469	57.22	231,436	56.81	I.Short term Instruments
Bono 3/M	30,695	8.31	25,774	6.44	22,870	5.51	11,495	2.82	3 Month Bills
Bono 6/M	57,911	15.67	54,631	13.64	47,647	11.48	44,188	10.85	6 Month Bills
Bono 9/M							3,317	0.83	9 Month Bills
Bono 12/M	143,605	38.86	143,819	35.91	166,952	40.23	172,436	42.33	1 Year Bills
2.Instrumenta afatgjate	121,820	32.97	144,740	36.14	153,162	36.90	170,385	41.83	II. Long term Instruments
Oblig.2/Vj	66,460	17.98	65,730	16.41	65,247	15.72	70,957	17.42	2 Year Note
Oblig.3/Vj	25,250	6.83	21,100	5.27	15,600	3.76	15,613	3.83	3 Year Note
Oblig.5/Vj	24,110	6.52	45,910	11.46	60,315	14.53	71,815	17.63	5 Year Note
Oblig.7/Vj	6,000	1.62	12,000	3.00	12,000	2.89	12,000	2.95	7 Year Note
3. Kredi Direkte	0	0.00	3,000	0.75	0.00	0.00	0.00	0.00	Central Bank Credits
4.Rivleresimi Valutes	15,505	4.20	23,540	5.88	18,870	4.55	0	0.00	Forgn.Ex.Res.Evalu.
II.Borxhi i Garantuar	0	0.00	4,952	1.24	5,527	1.33	5,551	1.36	II.Publicly Guaranteed Debt
1. Garanci Treg.Brend.	0	0.00	4,952	1.24	5,527	1.33	5,551	1.36	Domestic Guarantees

Struktura e Borxhit te Brendshem
Domestic Debt Structure



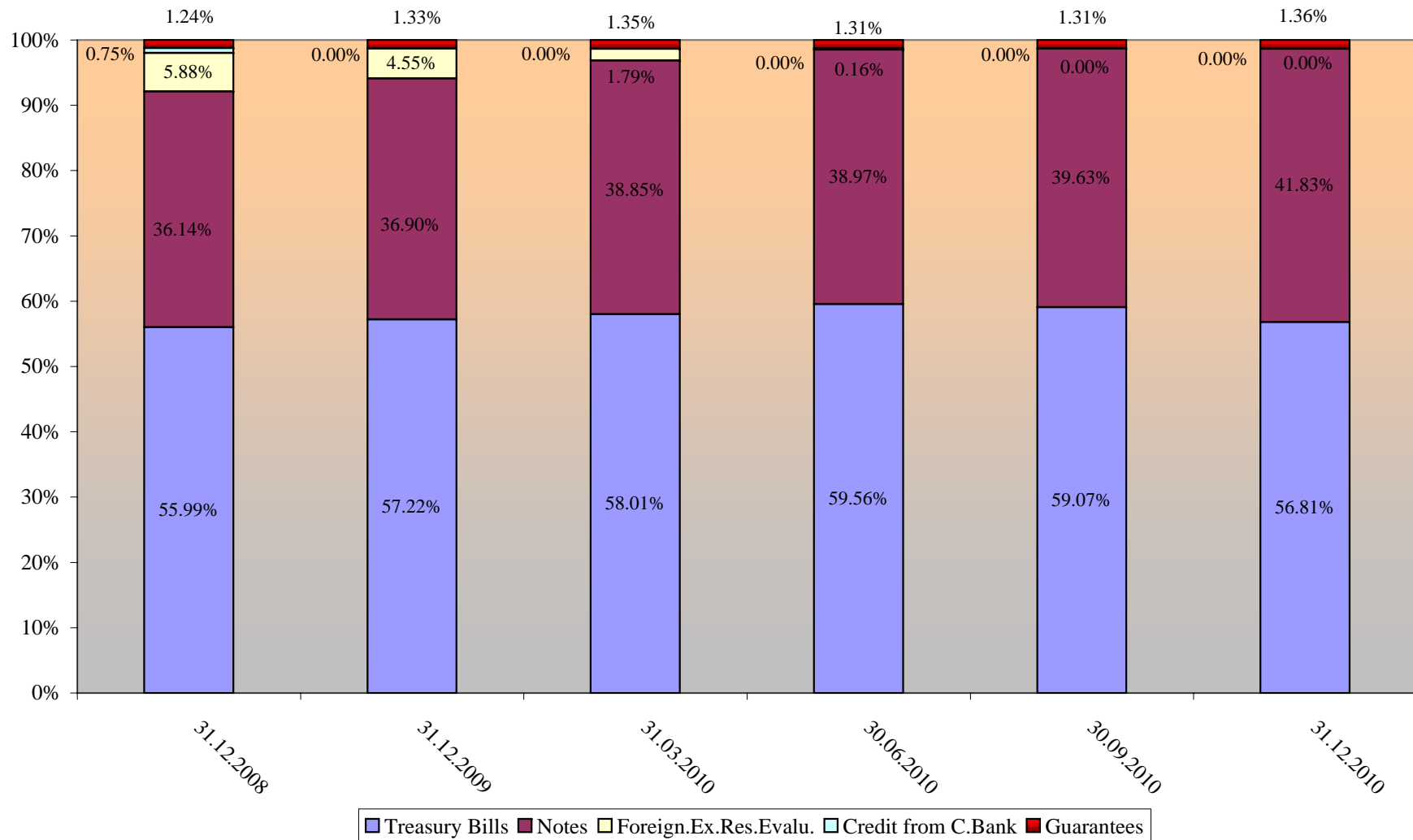
Struktura e Borxhit te Brendshem Shteteror *
Structure of Central Government Domestic Debt

	2009		2010		
	million ALL	%	million ALL	%	
- Sipas Instrumentave	390,631		401,821		- By instruments
Instrumenta afatshkurter	237,469	60.79%	231,436	57.60%	short tern
Instrumenta afatgjate	153,162	39.21%	170,385	42.40%	long term
-Sipas monedhes	390,631		401,821		- By currency
-Monedhe kombetare	390,631	100.00%	398,352	99.14%	domestic currency
-Monedhe huaj	0	0.00%	3,469	0.86%	foreing currency
- Sipas rezidences se kreditorit	390,631		401,821		- By creditor's residence
- rezidente	388,456	99.44%	397,911	99.03%	residents
- jo rezidente	2,175	0.56%	3,910	0.97%	non residents

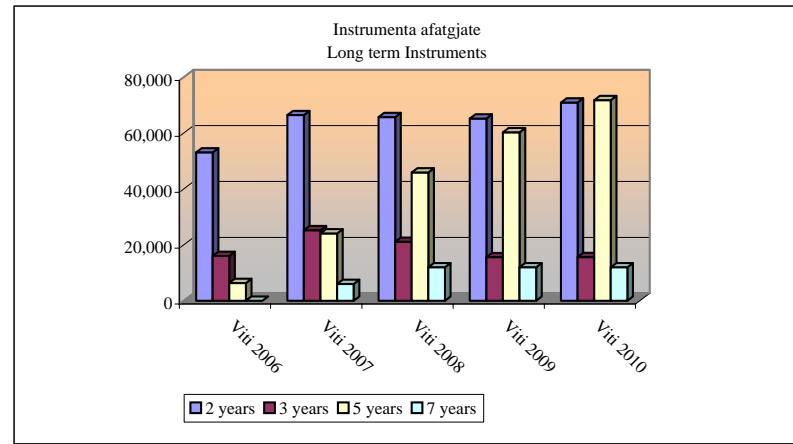
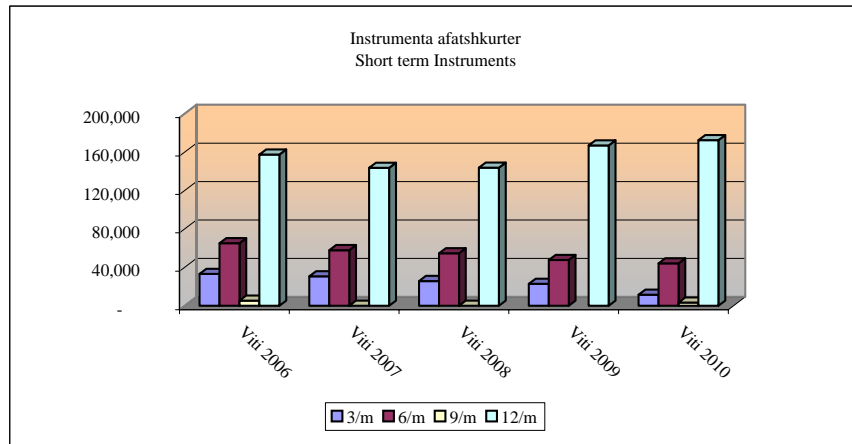
* Nuk perfshihet rivleresimi i valutes dhe garancite e brendshme

* Forgn.Ex.Res.Evalu. and domestic guaranties are not includet

Stoku i Borxhit te Brendshem sipas instrumentave
Domestic Debt Stock by Instruments

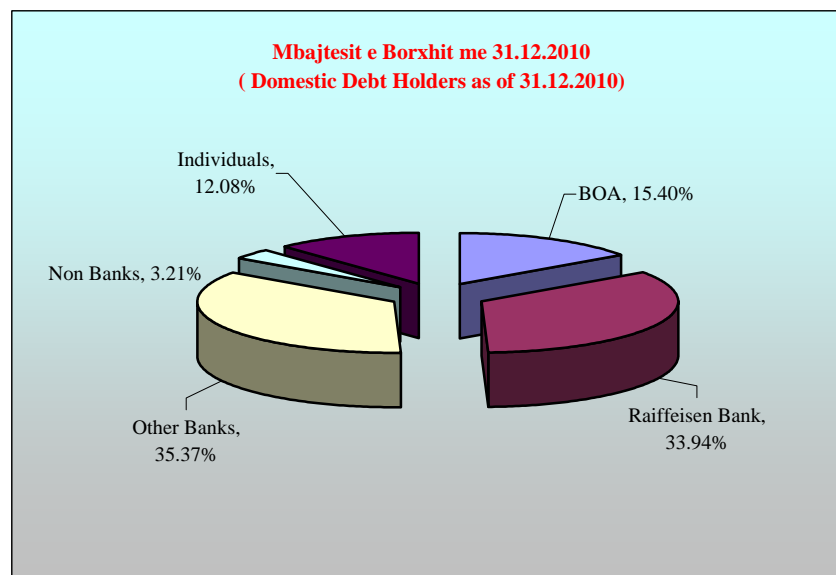
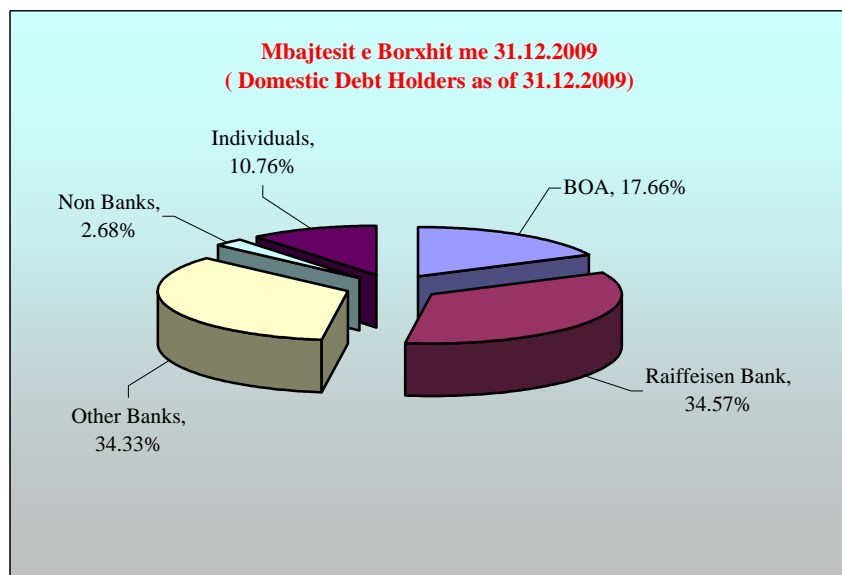


Ecuria e instrumentave te borxhit te brendshem
Evolution of Domestic Debt Instruments



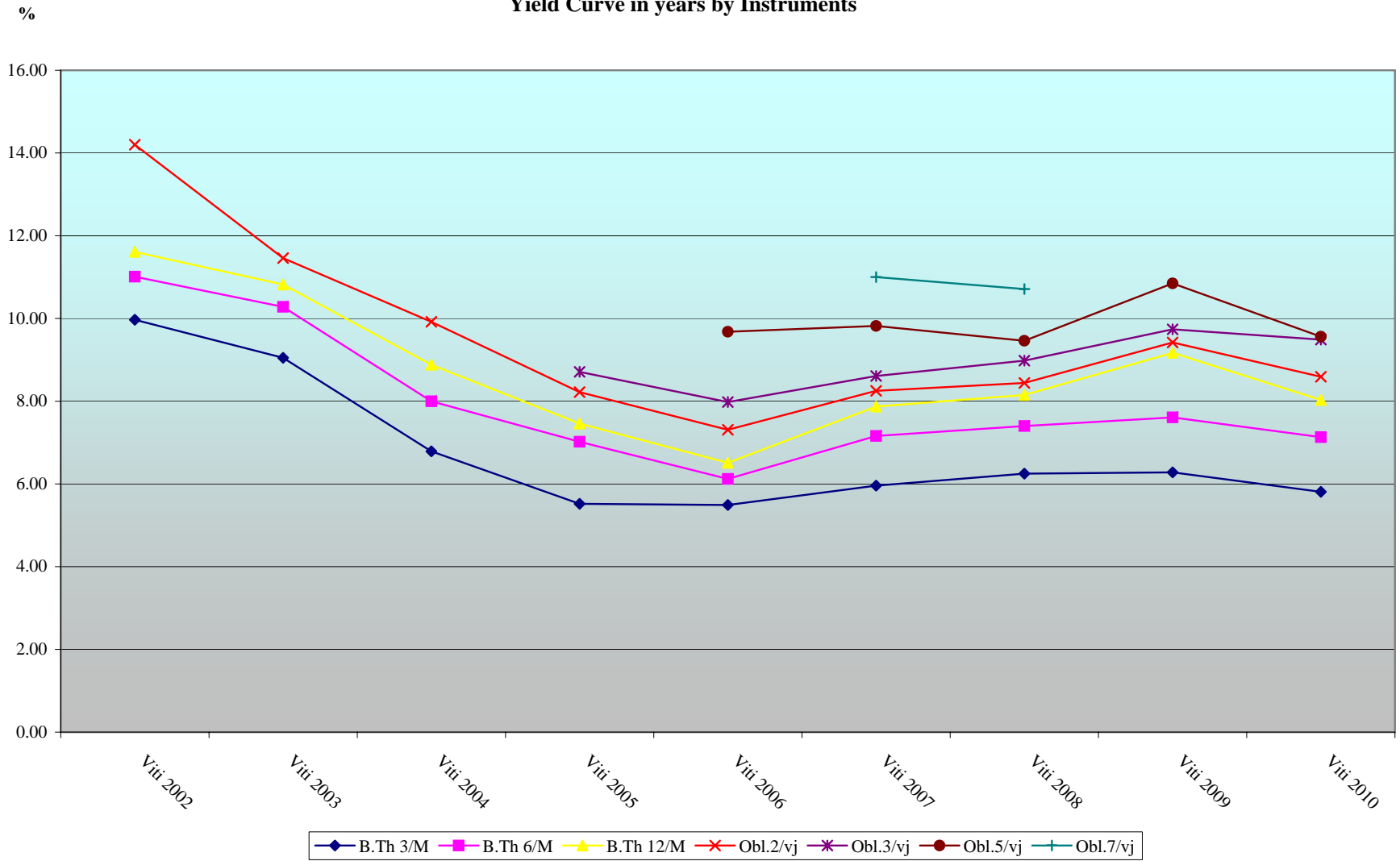
Mbajtesit e Borxhit te Brendshem * ne Çmim Blerje
Domestic Debt Holders * in Purchase Value

	31.12.2008	31.12.2009	31.12.2010	
BOA	17.75%	17.66%	15.40%	BOA
Raiffeisen Bank	36.88%	34.57%	33.94%	Banka Raiffeisen
Other Banks	34.58%	34.33%	35.37%	Bankat e tjera
Non Banks	2.46%	2.68%	3.21%	Jo Banka
Individuals	8.33%	10.76%	12.08%	Individet

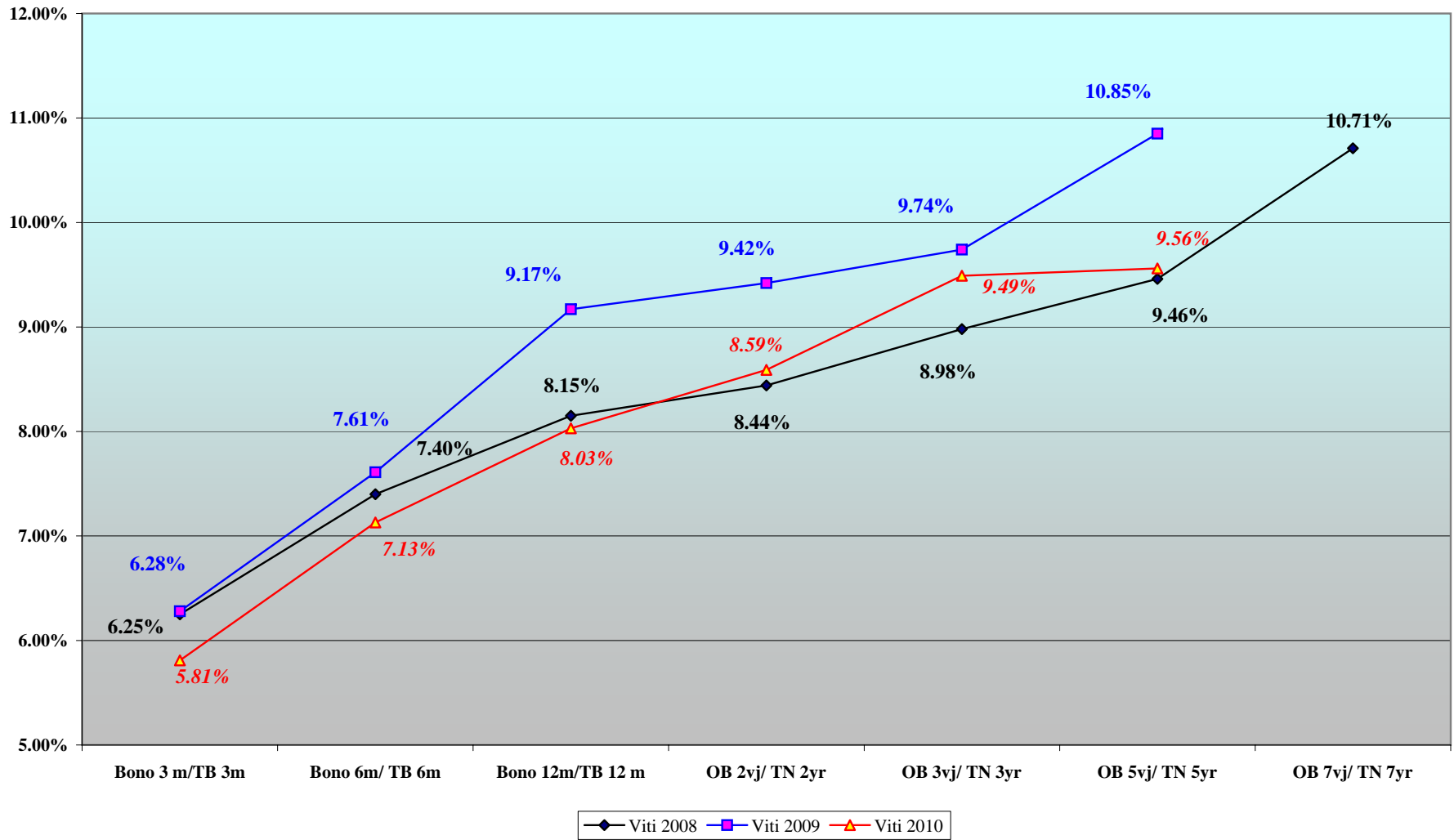


***) Nuk perfshihen Rivleresimi i valutes dhe Garancite.**
Foreing exchange reserves reevaluation and Guarantees are not included

Interesat e Letrave me vlere ne vite sipas Instrumentave
Yield Curve in years by Instruments



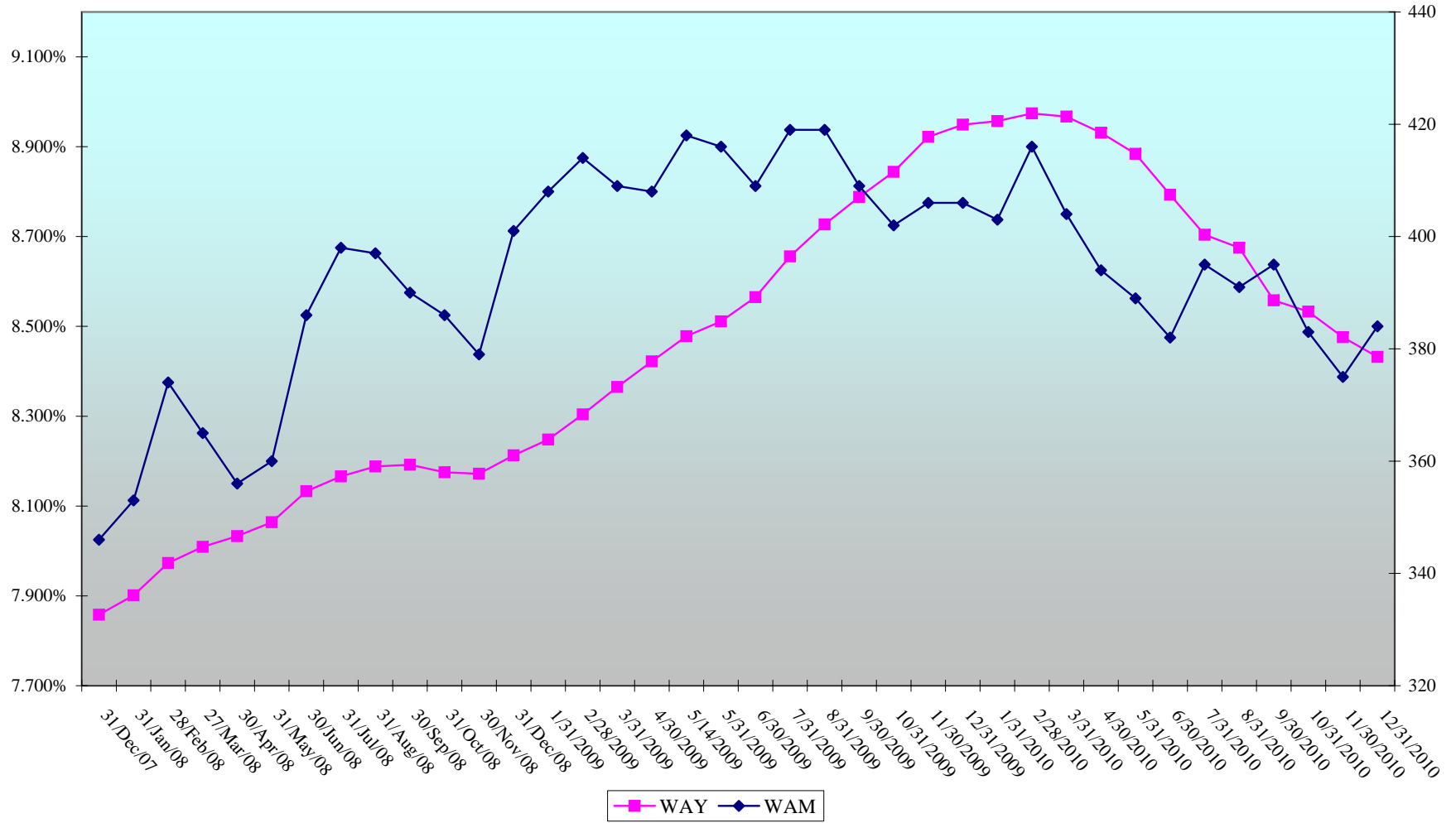
**Kurba e Yield-it te Letrave me Vlere
Yield Curve Of Albanian Securities**



Letrat me vlere te Qeverise
Yield Mesatar & Dite Mesatare ne maturim
Albanian Government Securities
Weighted Average Yield & Weighted Average Maturity

Yield

Days



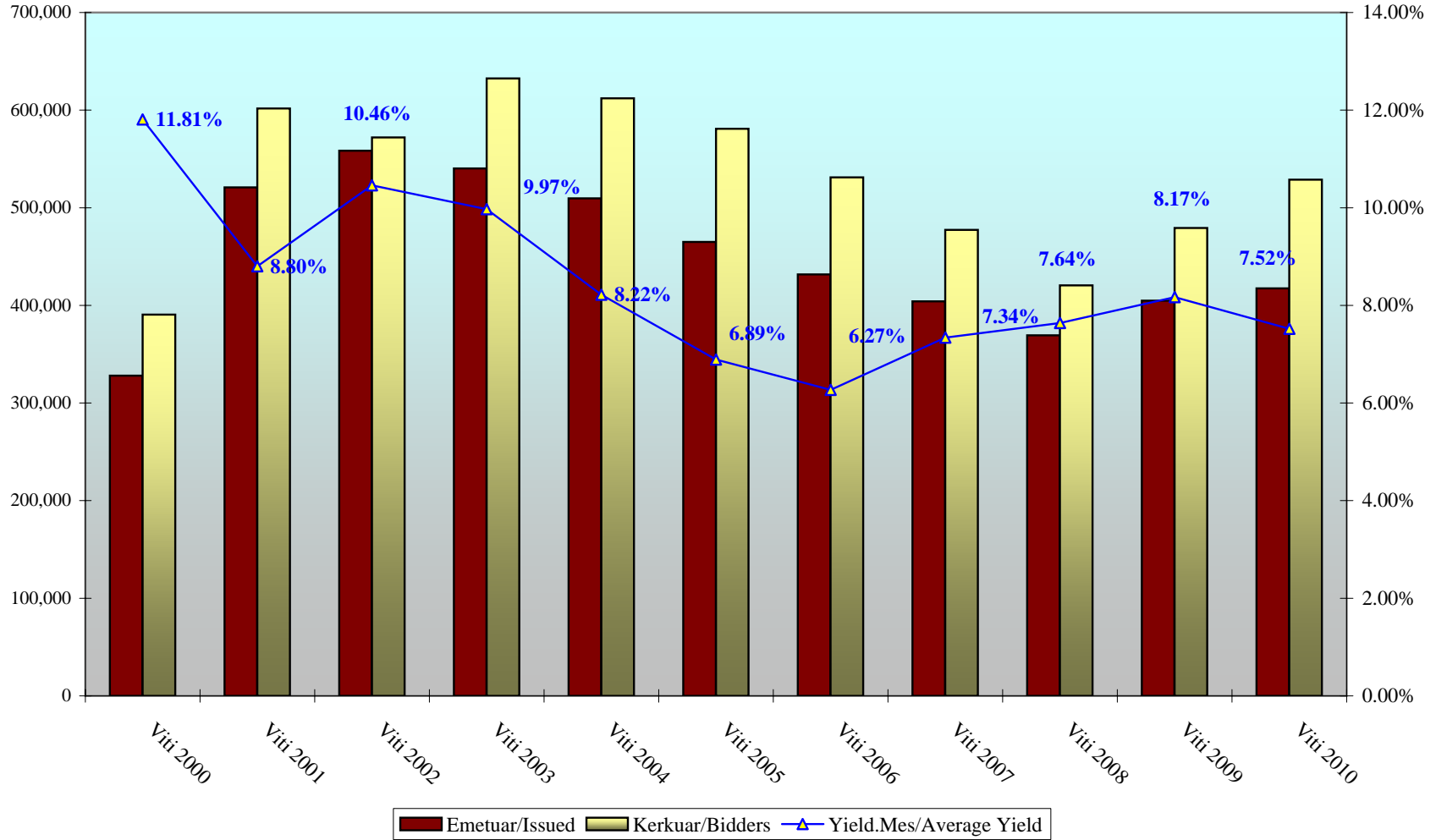
Dite Mesatare ne Maturim & Yield-i Mesatar i Ponderuar
Weighted Average Maturity & Weighted Average Yield

	Average Maturity	Average Yield	Averg. Mat Pa BOA	Averg Yield Pa BOA
31,12,2005	195	7.427	223	7.589
31,12,2006	242	6.744	284	6.807
31,12,2007	346	7.858	409	8.070
31.12.2008	401	8.213	470	8.461
31.01.2009	408	8.248	475	8.507
29.02.2009	414	8.304	485	8.572
31.03.2009	409	8.365	485	8.647
30.04.2009	408	8.422	482	8.702
31.05.2009	416	8.511	492	8.791
30.06.2009	409	8.565	486	8.844
31.07.2009	419	8.656	494	8.950
31.08.2009	419	8.727	492	9.000
30.09.2009	409	8.788	481	9.068
31.10.2009	402	8.844	471	9.129
30.11.2009	406	8.922	475	9.207
31.12.2009	406	8.949	471	9.236
31.01.2010	403	8.957	465	9.255
28.02.2010	416	8.974	484	9.289
31.03.2010	404	8.967	472	9.286
30.04.2010	394	8.931	460	9.263
31.05.2010	389	8.884	456	9.218
30.06.2010	382	8.793	445	9.120
31.07.2010	395	8.704	456	9.030
31.08.2010	391	8.675	455	8.998
30.09.2010	395	8.558	460	8.878
31.10.2010	383	8.533	448	8.857
30.11.2010	375	8.476	442	8.797
31.12.2010	384	8.432	438	8.705

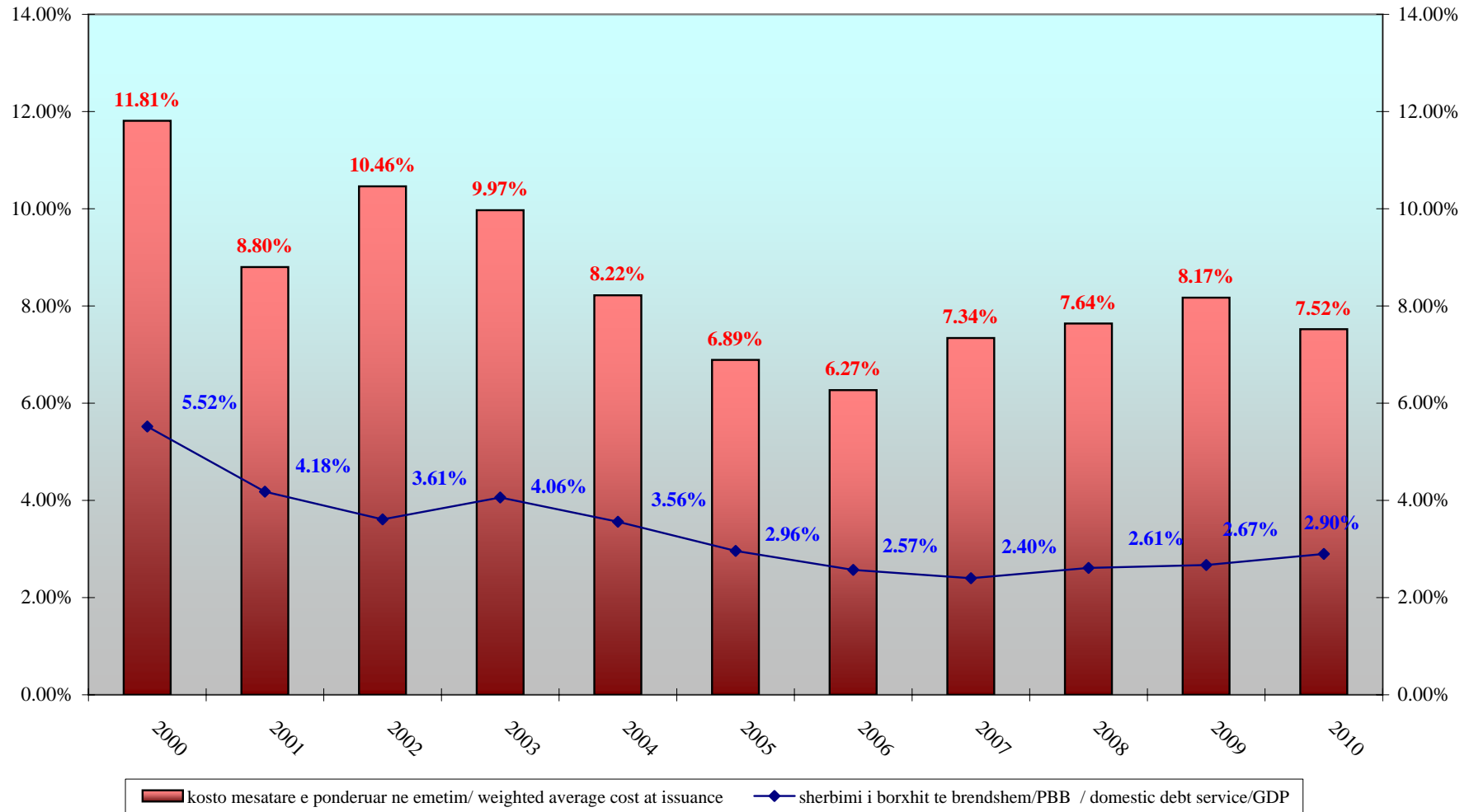
Letrat me vlere te Qeverise: Emetuar, Kerkuar, Yield Mesatar i Ponderuar
Government Securities: Issued, Bidded, Average Yield

milion leke

Yield

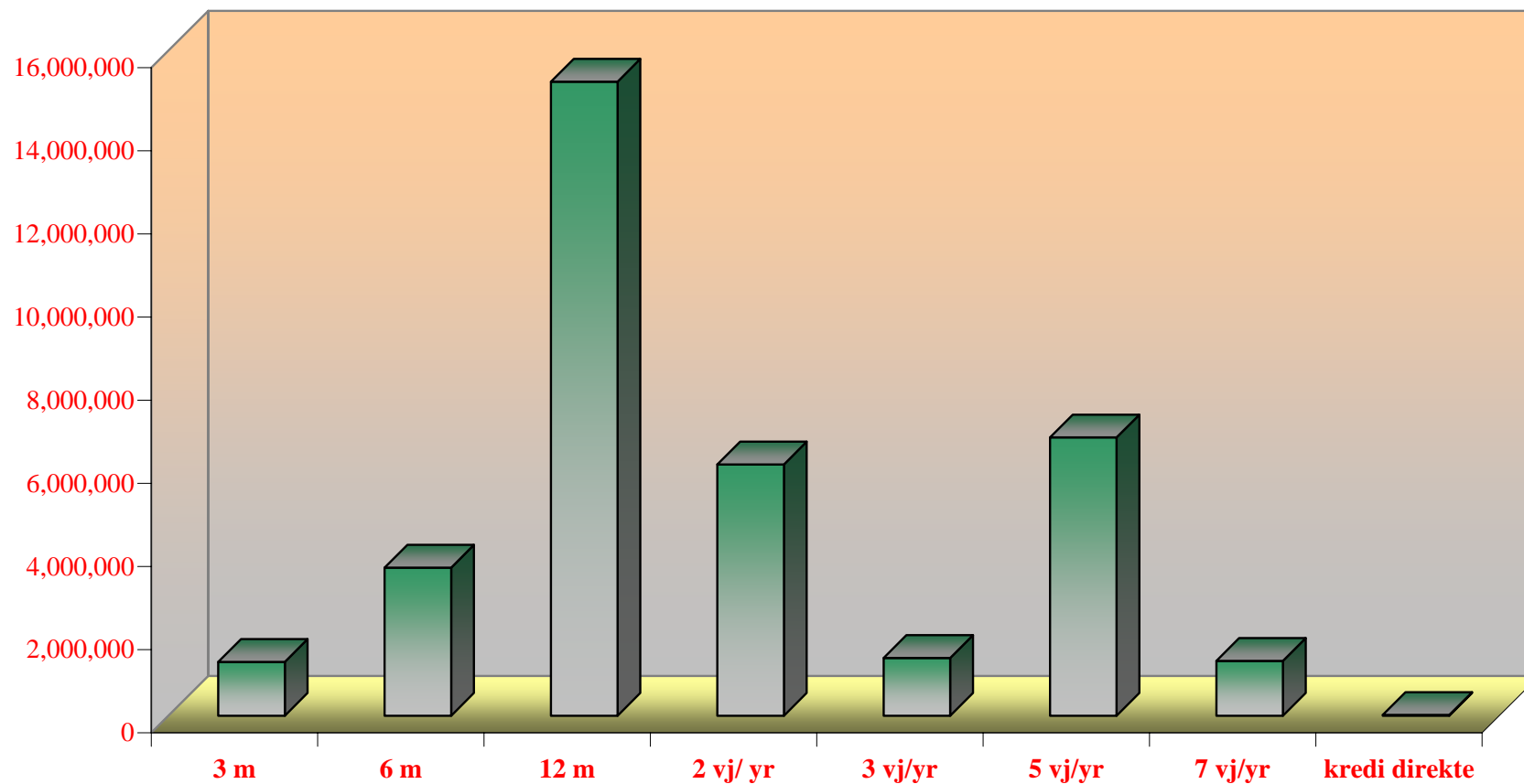


Sherbimi Borxhit te Brendshem/GDP & Kosto Mesatare e Ponderuar ne Emetim
Domestic Debt Service/GDP & Weighted Average Cost at Issuance

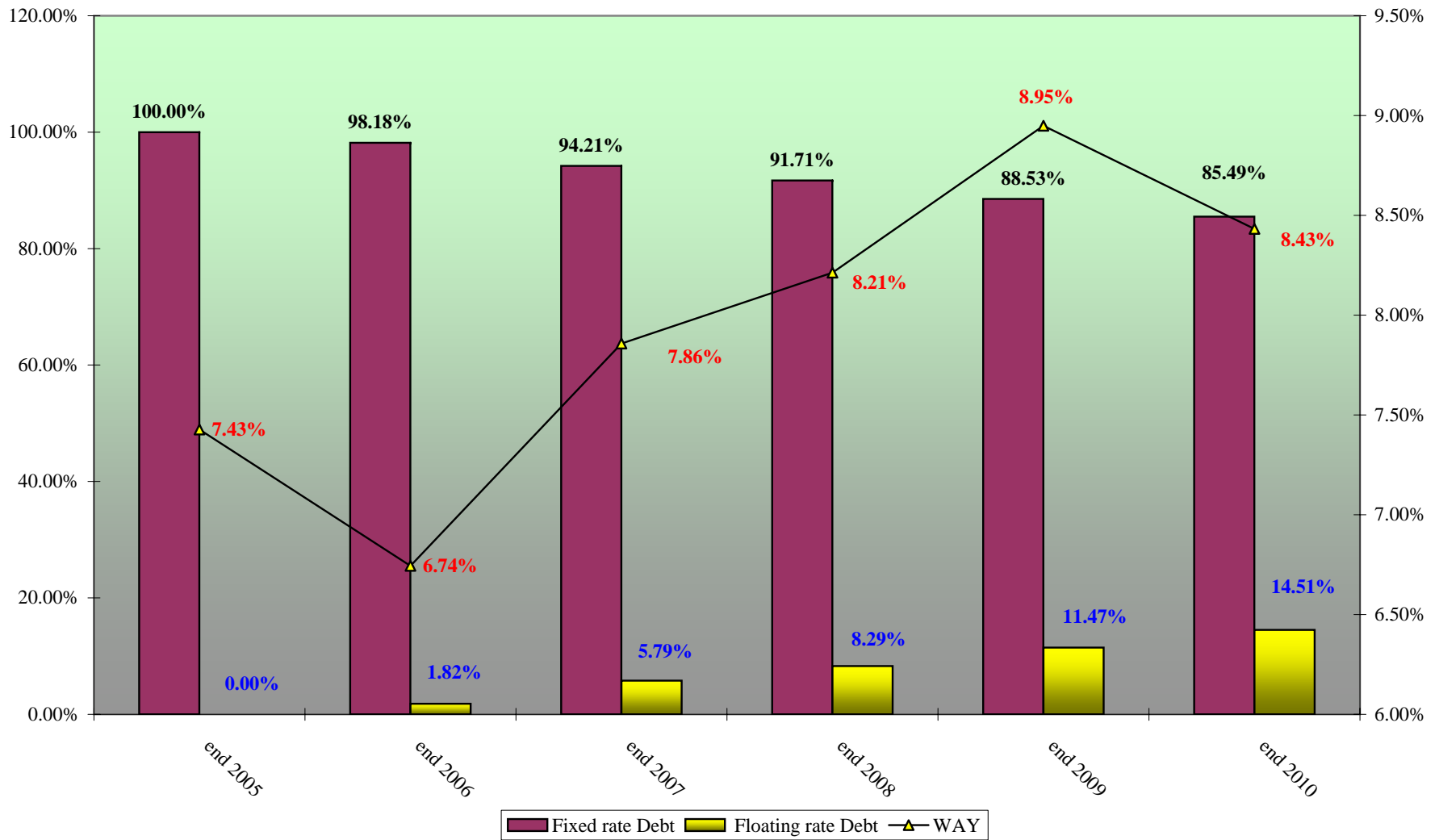


Shpenzimet per Interesa per Borxhin e Brendshem Viti 2010
Domestic Debt Service 2010

mije leke



Ecuria e Struktures se Borxhit te Brendshem & Yield-I Mesatar i Ponderuar
Evolution of Domestic Debt Structure and Weighted Average Yield



**BORXHI I JASHEM* AFATGJATE I SHQIPERISE
TE DHENA PERMBLEDHESE**

**LONG-TERM EXTERNAL PUBLIC DEBT*
SUMMARIZED DATA**

(in million EUR)

Klasifikimi	Deri ne 31.12.2006 Up to 31.12.2006	2007	2008	2009	2010	GJITHSEJ TOTAL	Classification
I. TE DHENA KUMULATIVE							I. CUMULATIVE DATA (STOCK)
Borxhi Neto	1,176.69	1,210.27	1,577.79	1,938.07	2,219.39	2,219.39	Debt Outstanding Disbursed (DOD)
Terheqjet	1,547.69	1,672.79	2,051.98	2,447.55	2,921.94	2,921.94	Drawings
Pagesat e Borxhit	394.72	458.43	534.41	641.41	950.25	950.25	Debt Service
-Principal	201.22	241.89	287.49	344.58	603.51	603.51	-Principal
-Interes	193.50	216.54	246.92	296.83	346.75	346.75	-Interest
Borxhi i nenshkruar i paterhequr	439.26	667.17	783.75	717.44	764.79	764.79	Committed Undisbursed Balance (CUB)
II. TE DHENA VJETORE							II. ANNUAL DATA (FLOWS)
Terheqjet	1,547.69	125.09	379.19	395.56	474.39	2,921.94	Drawings
Pagesat e Borxhit	394.72	63.71	75.98	107.00	308.85	950.25	Debt Service
-Principal	201.22	40.67	45.60	57.09	258.93	603.51	-Principal
-Interes	193.50	23.04	30.38	49.91	49.92	346.75	-Interest

*) Përfshin borxhin shtetëror dhe shtetëror të garantuar (Tabela I.1 + Tabela I.2)

**) Përfshihen të dhënat për periudhën 1991-2006

***) Deri më 31.12.2010, të dhëna paraprake

Ne këtë Tabelë nuk përfshihen kredia e FMN-se

*) Includes Central Government and Central Government Guaranteed debt (Table I.1 + Table I.2)

**) Cumulative data (1991-2006)

***) As of Dec. 31, 2010, data are preliminary

IMF credit is not included

**BORXHI I JASHEM I QEVERISE QENDRORE
TE DHENA PERMBLEDHESE**

**CENTRAL GOVERNMENT EXTERNAL DEBT
SUMMARIZED DATA**

(in million EUR)

Klasifikimi	Deri ne 31.12.2006 Up to 31.12.2006	2007	2008	2009	2010	GJITHSEJ TOTAL	Classification
I. TE DHENA KUMULATIVE							I. CUMULATIVE DATA (STOCK)
Borxhi Neto	969.29	985.26	1,322.58	1,646.33	1,932.06	1,932.06	Debt Outstanding Disbursed (DOD)
Terheqjet	1,300.77	1,391.22	1,735.01	2,078.48	2,541.11	2,541.11	Drawings
Pagesat e Borxhit	336.34	384.85	441.95	525.99	808.35	808.35	Debt Service
-Principal	168.56	200.56	234.72	276.77	516.05	516.05	-Principal
-Interes	167.78	184.30	207.24	249.23	292.29	292.29	-Interest
Borxhi i nenshkruar i paterhequr	286.37	533.21	671.22	657.08	716.19	716.19	Committed Undisbursed Balance (CUB)
II. TE DHENA VJETORE							II. ANNUAL DATA (FLOWS)
Terheqjet	1,300.77	90.45	343.79	343.46	462.63	2,541.11	Drawings
Pagesat e Borxhit	336.34	48.51	57.10	84.04	282.35	808.35	Debt Service
-Principal	168.56	32.00	34.16	42.05	239.29	516.05	-Principal
-Interes	167.78	16.51	22.94	41.99	43.07	292.29	-Interest

*) Perfshihen te dhenat per periudhen 1991-2006

**) Deri me 31.12.2010, te dhena paraprake
Ne kete tabele nuk perfshihet kredia e FMN-se

*) Cumulative data (1991-2006)

**) As of Dec. 31, 2010, data are preliminary
IMF credit is not included

**BORXHI I JASHEM I GARANTUAR NGA QEVERIA QENDRORE
TE DHENA PERMBLEDHESE**

**CENTRAL GOVERNMENT GUARANTEED DEBT
SUMMARIZED DATA**

(in million EUR)

Klasifikimi	Deri ne 31.12.2006 Up to 31.12.2006	2007	2008	2009	2010	GJITHSEJ TOTAL	Classification
I. TE DHENA KUMULATIVE							I. CUMULATIVE DATA (STOCK)
Borxhi Neto	207.40	225.01	255.21	291.74	287.34	287.34	Debt Outstanding Disbursed (DOD)
Terheqjet	246.93	281.57	316.97	369.07	380.83	380.83	Drawings
Pagesat e Borxhit	58.38	73.58	92.45	115.41	141.91	141.91	Debt Service
-Principal	32.66	41.33	52.77	67.81	87.46	87.46	-Principal
-Interes	25.72	32.24	39.68	47.60	54.45	54.45	-Interest
Borxhi i nenshkruar i paterhequr	152.90	133.97	112.53	60.36	48.60	48.60	Committed Undisbursed Balance (CUB)
II. TE DHENA VJETORE							II. ANNUAL DATA (FLOWS)
Terheqjet	246.93	34.64	35.40	52.10	11.76	380.83	Drawings
Pagesat e Borxhit	58.38	15.19	18.88	22.96	26.50	141.91	Debt Service
-Principal	32.66	8.67	11.44	15.04	19.65	87.46	-Principal
-Interes	25.72	6.52	7.44	7.92	6.85	54.45	-Interest

*) Perfshihen te dhenat per periudhen 1991-2006

**) Deri me 31.12.2010, te dhena paraprake

*) Cumulative data (1991-2006)

**) As of Dec. 31, 2010, data are preliminary

BORXHI I JASHEM* AFATGJATE I SHQIPERISE
TERHEQJET NE VITE NGA KREDITE E HUAJA SIPAS KREDITOREVE

LONG-TERM EXTERNAL PUBLIC DEBT*
DRAWINGS BY YEARS AND BY CREDITORS

Sipas kreditoreve	Deri ne 31.12.2006 Up to 31.12.2006	2007	2008	2009	2010				TOTALI	By Creditors
					Q1	Q2	Q3	Q4		
-Shumepalesh (I)	910.80	99.14	112.97	136.80	39.56	27.61	26.03	18.00	1,370.90	-Multilateral (I)
CEB	9.98	8.40	15.41	21.83	14.00	1.07	4.23	2.00	76.92	CEB
IBRD	-	3.85	8.08	4.94	0.15	1.55	0.18	0.44	19.19	IBRD
EC	9.00	-	-	-	-	-	-	-	9.00	EC
EBRD	80.96	14.67	24.93	32.24	3.42	3.66	2.48	4.82	167.17	EBRD
EIB	99.37	30.95	31.76	28.19	10.54	6.24	6.50	4.00	217.55	EIB
IDA	625.05	35.02	18.53	25.02	5.15	6.44	4.31	3.70	723.23	IDA
IDB	34.07	4.94	9.45	14.80	2.49	5.60	4.30	0.98	76.63	IDB
IFAD	29.73	0.73	1.51	1.41	0.84	0.73	0.21	0.39	35.55	IFAD
OPEC	22.64	0.58	3.30	8.36	2.97	2.32	3.81	1.66	45.65	OPEC
-Dypalesh (II)	545.41	25.95	36.22	66.17	9.91	20.82	13.77	18.70	736.96	-Bilateral (II)
AUSTRIA	4.51	-	-	5.03	0.14	-	1.95	0.37	11.99	AUSTRIA
BULLGARI	0.08	-	-	-	-	-	-	-	0.08	BULGARIA
ÇEKI	8.49	-	-	-	-	-	-	-	8.49	CZECH REP.
GREQI	49.35	-	-	-	-	-	-	-	49.35	GREECE
GJERMANI	112.22	13.53	10.74	24.67	3.83	3.58	3.30	4.33	176.20	GERMANY
HUNGARI	11.92	-	-	-	-	-	-	-	11.92	HUNGARY
ITALI	134.69	6.79	17.10	23.09	3.66	15.54	7.18	12.81	220.86	ITALY
JAPONI	52.71	-	-	-	1.19	-	0.60	0.51	55.01	JAPAN
JUGOSLLAVI	0.05	-	-	-	-	-	-	-	0.05	YUGOSLAVIA
MAQEDONI	0.98	-	-	-	-	-	-	-	0.98	MACEDONIA
TURQI	26.86	-	-	-	-	-	-	-	26.86	TURKEY
KUVAIT	37.49	1.64	3.04	2.46	0.30	0.94	0.75	0.51	47.12	KUWAIT
KINE	41.09	-	-	-	-	-	-	-	41.09	CHINA
KOREA	18.80	3.05	0.21	-	-	-	-	-	22.05	SOUTH KOREA
POLONI	0.92	-	-	-	-	-	-	-	0.92	POLAND
RUMANI	4.50	-	-	-	-	-	-	-	4.50	ROMANIA
SPANJE	-	0.95	0.74	5.02	-	-	-	-	6.71	SPAIN
SLOVAKI	4.30	-	-	-	-	-	-	-	4.30	SLOVAKIA
SUEDI	3.14	-	-	-	-	-	-	-	3.14	SWEDEN
NORVEGJI	28.86	-	-	-	-	-	-	-	28.86	NORWAY
HOLLANDE	-	-	4.40	5.90	0.78	0.77	-	0.17	12.02	NETHERLANDS
ZVICRA	4.47	-	-	-	-	-	-	-	4.47	SWITZERLAND
Kreditore Private (III)	-	-	230.00	192.60	-	-	-	300.00	722.60	Private Creditors (III)
Kreditore Private	-	-	230.00	192.60	-	-	-	-	422.60	Private Creditors
EUROBONDI	-	-	-	-	-	-	-	300.00	300.00	EUROBOND
-Klubi i Parisit (IV)	91.44	-	-	-	-	-	-	-	91.44	-Paris Club (IV)
AUSTRI	8.85	-	-	-	-	-	-	-	8.85	AUSTRIA
ANGLI	0.02	-	-	-	-	-	-	-	0.02	UNITED KINGDOM
DANIMARKE	0.12	-	-	-	-	-	-	-	0.12	DENMARK
FRANCE	21.85	-	-	-	-	-	-	-	21.85	FRANCE
GJERMANI	13.14	-	-	-	-	-	-	-	13.14	GERMANY
HOLLANDE	1.18	-	-	-	-	-	-	-	1.18	NETHERLANDS
ITALI	7.57	-	-	-	-	-	-	-	7.57	ITALY
JAPONI	0.20	-	-	-	-	-	-	-	0.20	JAPAN
RUSI	38.52	-	-	-	-	-	-	-	38.52	RUSSIA
GJITHSEJ (I+II+III+IV)	1,547.65	125.09	379.19	395.56	49.47	48.43	39.80	336.69	2,921.89	TOTAL (I+II+III+IV)

*) Përfshin borxhin shtetëror dhe shtetëror të garantuar (Tabela II.1 + Tabela II.2)

Ne këto tabela nuk përfshihen kredia e FMN-se

**) Deri më 31.12.2010, të dhëna paraprake

*) Includes Central Government and Central Government Guaranteed debt

IMF credit is not included

**) As of Dec. 31, 2010, data are preliminary

**BORXHI I JASHEM I QEVERISE QENDRORE
TERHEQJET NE VITE NGA KREDITE E HUAJA SIPAS KREDITOREVE**

**CENTRAL GOVERNMENT EXTERNAL DEBT
DRAWINGS BY YEARS AND BY CREDITORS**

(in million EUR)

Sipas kreditoreve	Deri ne 31.12.2006 Up to 31.12.2006	2007	2008	2009	2010				TOTALI	By Creditors
					Q1	Q2	Q3	Q4		
-Shumepalesh (I)	817.18	72.61	83.58	103.69	37.59	24.86	25.48	17.49	1,182.48	-Multilateral (I)
CEB	9.98	8.40	15.41	21.83	14.00	1.07	4.23	2.00	76.92	CEB
IBRD	-	3.85	8.08	4.94	0.15	1.55	0.18	0.44	19.19	IBRD
EC	9.00	-	-	-	-	-	-	-	9.00	EC
EBRD	16.99	7.14	10.54	10.14	1.45	0.91	1.93	4.32	53.40	EBRD
EIB	69.72	11.95	16.76	17.19	10.54	6.24	6.50	4.00	142.90	EIB
IDA	625.05	35.02	18.53	25.02	5.15	6.44	4.31	3.70	723.23	IDA
IDB	34.07	4.94	9.45	14.80	2.49	5.60	4.30	0.98	76.63	IDB
IFAD	29.73	0.73	1.51	1.41	0.84	0.73	0.21	0.39	35.55	IFAD
OPEC	22.64	0.58	3.30	8.36	2.97	2.32	3.81	1.66	45.65	OPEC
-Dypalesh (II)	392.15	17.84	30.21	47.17	9.18	18.73	11.94	17.36	544.58	-Bilateral (II)
AUSTRIA	4.51	-	-	5.03	0.14	-	1.95	0.37	11.99	AUSTRIA
BULLGARI	0.08	-	-	-	-	-	-	-	0.08	BULGARIA
ÇEKI	8.49	-	-	-	-	-	-	-	8.49	CZECH REP.
GREQI	40.54	-	-	-	-	-	-	-	40.54	GREECE
GJERMANI	69.20	9.43	6.08	5.68	3.16	1.49	1.49	3.03	99.55	GERMANY
HUNGARI	11.92	-	-	-	-	-	-	-	11.92	HUNGARY
ITALI	88.61	5.82	15.95	23.09	3.61	15.54	7.16	12.77	172.56	ITALY
JAPONI	16.15	-	-	-	1.19	-	0.60	0.51	18.44	JAPAN
JUGOSLLAVI	0.05	-	-	-	-	-	-	-	0.05	YUGOSLAVIA
MAQEDONI	0.98	-	-	-	-	-	-	-	0.98	MACEDONIA
TURQI	26.86	-	-	-	-	-	-	-	26.86	TURKEY
KUVAIT	37.49	1.64	3.04	2.46	0.30	0.94	0.75	0.51	47.12	KUWAIT
KINE	41.09	-	-	-	-	-	-	-	41.09	CHINA
POLONI	0.92	-	-	-	-	-	-	-	0.92	POLAND
RUMANI	4.50	-	-	-	-	-	-	-	4.50	ROMANIA
SPANJE	-	0.95	0.74	5.02	-	-	-	-	6.71	SPAIN
SLOVAKI	4.30	-	-	-	-	-	-	-	4.30	SLOVAKIA
SUEDI	3.14	-	-	-	-	-	-	-	3.14	SWEDEN
NORVEGJI	28.86	-	-	-	-	-	-	-	28.86	NORWAY
HOLLANDE	-	-	4.40	5.90	0.78	0.77	-	0.17	12.02	NETHERLANDS
ZVICRA	4.47	-	-	-	-	-	-	-	4.47	SWITZERLAND
Kreditor Privat (III)	-	-	230.00	192.60	-	-	-	300.00	722.60	Private Creditors (III)
Kreditor Private kredi	-	-	230.00	192.60	-	-	-	-	422.60	Private Creditors Loans
EUROBONDI	-	-	-	-	-	-	-	300.00	300.00	EUROBOND
-Klubi i Parisit (IV)	91.44	-	-	-	-	-	-	-	91.44	-Paris Club (IV)
AUSTRI	8.85	-	-	-	-	-	-	-	8.85	AUSTRIA
ANGLI	0.02	-	-	-	-	-	-	-	0.02	UNITED KINGDOM
DANIMARKE	0.12	-	-	-	-	-	-	-	0.12	DENMARK
FRANCE	21.85	-	-	-	-	-	-	-	21.85	FRANCE
GJERMANI	13.14	-	-	-	-	-	-	-	13.14	GERMANY
HOLLANDE	1.18	-	-	-	-	-	-	-	1.18	NETHERLANDS
ITALI	7.57	-	-	-	-	-	-	-	7.57	ITALY
JAPONI	0.20	-	-	-	-	-	-	-	0.20	JAPAN
RUSI	38.52	-	-	-	-	-	-	-	38.52	RUSSIA
GJITHSEJ (I+II+III+IV)	1,300.77	90.45	343.79	343.46	46.77	43.59	37.42	334.85	2,541.10	TOTAL (I+II+III+IV)

Ne kete tabelë nuk përfshihen kredia e FMN-se

***) Deri me 31.12.2010, të dhëna paraprake

IMF credit is not included

**) As of Dec. 31, 2010, data are preliminary

**BORXHI I JASHEM I GARANTUAR NGA QEVERIA QENDRORE
TERHEQJET NE VITE NGA KREDITE E HUAJA SIPAS KREDITOREVE**

**CENTRAL GOVERNMENT GUARANTEED DEBT
DRAWINGS BY YEARS AND BY CREDITORS**

(in million EUR)

Sipas kreditoreve	Deri ne 31.12.2006 Up to 31.12.2006	2007	2008	2009	2010				GJITHSEJ TOTAL	By Creditors
					Q1	Q2	Q3	Q4		
-Shumepalesh (I)	93.62	26.53	29.39	33.10	1.97	2.75	0.55	0.50	188.42	-Multilateral (I)
EBRD	63.97	7.53	14.39	22.10	1.97	2.75	0.55	0.50	113.77	EBRD
EIB	29.65	19.00	15.00	11.00	-	-	-	-	74.65	EIB
-Dypalesh (II)	153.26	8.11	6.01	18.99	0.73	2.09	1.83	1.34	192.37	-Bilateral (II)
GJERMANI	43.02	4.10	4.66	18.99	0.67	2.09	1.81	1.30	76.65	GERMANY
GREQI	8.80	-	-	-	-	-	-	-	8.80	GREECE
ITALI	46.08	0.96	1.15	-	0.06	-	0.02	0.04	48.30	ITALY
JAPONI	36.56	-	-	-	-	-	-	-	36.56	JAPAN
KOREA	18.80	3.05	0.21	-	-	-	-	-	22.05	SOUTH KOREA
-Klubi Parisit (III)	0.05	-	-	-	-	-	-	-	0.05	-Paris Club (III)
JAPONI	0.05	-	-	-	-	-	-	-	0.05	JAPAN
GJITHSEJ (I+II+III)	246.93	34.64	35.40	52.10	2.70	4.84	2.38	1.84	380.84	TOTAL (I+II+III)

**) Deri me 31.12.2010, te dhena paraprake

**) As of Dec. 31, 2010, data are preliminary

TABELA III - TABLE III

**BORXHI I JASHEM* AFATGJATE I SHQIPERISE
TERHEQJET NE VITE SIPAS SEKTOREVE EKONOMIKE**

**LONG-TERM EXTERNAL PUBLIC DEBT*
DRAWINGS BY ECONOMIC SECTORS**

Sipas sektoreve ekonomike	Deri ne 31.12.2006 Up to 31.12.2006	2007	2008	2009	2010				GJITHSEJ TOTAL	By Economic Sectors
					Q1	Q2	Q3	Q4		
					ADMINISTRATA SHETETORE	31.16	1.72	(0.00)		
ARESIMI	26.60	9.72	9.72	4.13	2.65	1.45	-	-	54.27	Education
BILANCI I PAGESAVE	18.35	-	-	-	-	-	-	-	18.35	Balance of Payment
BUJQESI, UJITJE	114.76	8.54	10.03	6.28	1.56	0.42	0.24	0.58	142.40	Agriculture-Irrigation
ENERGJETIKE	261.88	38.89	44.80	85.76	9.75	10.26	6.60	13.35	471.29	Energy
IMPORT MALLRASH DHE PAJISJESH	54.74	-	-	-	-	-	-	-	54.74	Import of Goods and Services
INDUSTRI E LEHTE	2.56	-	-	-	-	-	-	-	2.56	Light Industry
INFRASTRUKTURE URBANE DHE RURALE	45.52	3.25	7.21	4.78	0.04	0.06	1.47	0.39	62.72	Urban and Rural Infrastructure
KLUBI I PARISIT DHE RISKEDULIME TE TJERA	206.31	-	-	-	-	-	-	-	206.31	Paris Club & Other Rescheduling
MBESHETJE PER BUXHETIN	234.58	7.34	-	192.60	-	-	-	300.00	734.53	Budgetary Support
MBROJTJA	8.90	-	-	-	-	1.83	-	-	10.73	Defence
MBROJTJA E MJEDISIT	1.39	1.13	0.26	0.25	-	0.74	-	0.28	4.05	Environmental Protection
PYJE	7.22	-	-	-	-	-	-	-	7.22	Forestry
SHENDETESI	39.58	6.70	2.73	15.31	0.69	1.68	3.95	2.12	72.76	Health
SIGURIME SHOQ./TREGU I PUNES	11.48	1.72	2.83	0.17	0.16	0.04	-	0.10	16.50	Social Safety/Labor Market
STREHIMI	14.07	-	2.19	5.03	-	1.07	3.03	-	25.39	Housing
TELEKOMUNIKACION	14.69	-	-	-	-	-	-	-	14.69	Telecommunication
TRANSPORT	236.96	29.88	278.46	61.27	28.74	10.47	18.31	13.87	677.95	Transport
TRANSPORTI AJROR	23.64	-	-	-	-	-	-	-	23.64	Air Transport
TRANSPORTI HEKURUDHOR	3.10	-	-	-	-	-	-	-	3.10	Rail Transport
UJESJELLESA/KANALIZIME	90.73	14.83	13.80	17.59	4.39	9.60	5.24	2.92	159.09	Water Supply and Sewerage
ZHVILL. SEK.PRIVAT	41.45	0.65	5.13	0.00	0.15	10.09	0.54	0.45	58.47	Enterprise Sector Development
TE TJERA	26.53	-	-	-	-	-	-	-	26.53	Other
ZHVILLIMI RURAL	31.50	0.73	2.03	2.41	1.32	0.73	0.42	2.65	41.78	Rural Development
GJITHSEJ	1,547.69	125.09	379.19	395.56	49.47	48.43	39.80	336.70	2,921.94	TOTAL

*) Përfshin borxhin shtetëror dhe shtetëror të garantuar
Ne kete tabelë nuk përfshihet kredia e FMN-se

**) Deri me 31.12.2010, të dhëna paraprake

*) Includes Central Government and Central Government Guaranteed debt
IMF credit is not included

**) As of Dec. 31, 2010, data are preliminary

BORXHI I JASHEM* AFATGJATE I SHQIPERISE
BORXHI NETO SIPAS KREDITOREVE

LONG-TERM EXTERNAL PUBLIC DEBT*
DEBT OUTSTANDING DISBURSED BY CREDITORS

(in million EUR)

Sipas kreditoreve	31.12.2007	31.12.2008	31.12.2009	31.12.2010	By Creditors
-Shumepalesh (I)	810.94	919.37	1,017.81	1,139.80	-Multilateral (I)
CEB	17.59	33.17	54.84	76.16	CEB
EBRD	61.57	77.86	97.94	98.65	EBRD
EC	9.00	9.00	9.00	9.00	EC
EIB	106.70	134.17	155.55	175.48	EIB
IBRD	3.85	11.93	16.88	19.20	IBRD
IDA	549.79	577.31	587.69	636.82	IDA
IDB	28.40	37.85	50.78	65.84	IDB
IFAD	24.36	26.03	26.62	29.68	IFAD
OPEC	9.67	12.05	18.51	28.97	OPEC
-Dypalesh (II)	323.41	357.67	408.72	466.05	-Bilateral (II)
GJERMANI	107.82	116.96	139.15	147.67	GERMANY
GREQI	13.19	12.94	12.69	12.42	GREECE
AUSTRI			5.03	7.48	AUSTRIA
ITALI	117.64	129.86	147.79	181.66	ITALY
JAPONI	36.39	45.05	41.57	48.98	JAPAN
KINE	1.26	1.32	1.29	1.39	CHINA
KUVAIT	21.79	23.73	23.03	26.74	KUWAIT
NORVEGJI	7.56	6.14	4.29	2.77	NORWAY
HOLLANDE		4.40	9.98	10.59	NETHERLANDS
SPANJE	0.95	1.74	6.46	6.97	SPAIN
KOREA	16.81	15.52	17.44	19.38	SOUTH KOREA
Kreditore private (III)		230.00	422.60	530.00	Private Creditors (III)
KREDITORE PRIVATE		230.00	422.60	230.00	PRIVATE CREDITORS
EUROBONDI				300.00	EUROBOND
-Borxhi i riskeduluar (IV) (A+B)	75.93	70.75	88.94	83.55	-Rescheduled Debt (IV) (A+B)
-Klubi i Parisit (A)	27.36	27.21	25.60	26.56	-Paris Club (A)
GJERMANI	1.00	0.33	-	-	GERMANY
ITALI	2.75	2.66	2.49	2.40	ITALY
RUSI	23.61	24.22	23.11	24.16	RUSSIA
-Te tjere (B)	48.57	43.54	63.34	56.99	-Others (B)
TURQI	12.64	11.65	9.87	9.01	TURKEY
GREQI			27.70	25.70	GREECE
KINE	17.96	16.41	13.75	12.37	CHINA
HUNGARI	5.78	5.04	3.94	3.18	HUNGARY
GJERMANI	2.21	1.47	0.74	0.37	GERMANY
RUMANIA	2.76	2.50	2.07	1.82	ROMANIA
SLLOVAKI	2.41	2.16	1.76	1.51	SLOVAK REP.
ÇEKI	4.82	4.31	3.51	3.03	CZECH REP.
GJITHSEJ (I+II+III+IV)	1,210.27	1,577.79	1,938.07	2,219.39	TOTAL (I+II+III+IV)

*) Përfshin borxhin shtetëror dhe shtetëror të garantuar
 Në këtë tabelë nuk përfshihen kredia e FMN-se

**) Deri më 31.12.2010, të dhëna paraprake

*) Includes Central Government and Central Government Guaranteed debt
 IMF credit is not included

**) As of Dec. 31, 2010, data are preliminary

**BORXHI I JASHEM I QEVERISE QENDRORE
BORXHI NETO SIPAS KREDITOREVE**

**CENTRAL GOVERNMENT EXTERNAL DEBT
DEBT OUTSTANDING DISBURSED BY CREDITORS**

(in million EUR)

Sipas kreditoreve	31.12.2007	31.12.2008	31.12.2009	2010	By Creditors
-Shumepalesh (I)	725.89	812.87	889.20	1,017.52	-Multilateral (I)
CEB	17.59	33.17	54.84	76.16	CEB
EBRD	21.29	30.42	37.78	43.21	EBRD
EC	9.00	9.00	9.00	9.00	EC
EIB	61.92	75.12	87.10	108.64	EIB
IBRD	3.85	11.93	16.88	19.20	IBRD
IDA	549.79	577.31	587.69	636.82	IDA
IDB	28.40	37.85	50.78	65.84	IDB
IFAD	24.36	26.03	26.62	29.68	IFAD
OPEC	9.67	12.05	18.51	28.97	OPEC
-Dypalesh (II)	183.45	208.95	245.60	300.99	-Bilateral (II)
GJERMANI	66.06	71.17	76.66	83.27	GERMANY
GREQI	4.39	4.14	3.89	3.62	GREECE
AUSTRI	-	-	5.03	7.48	AUSTRIA
ITALI	70.98	83.41	103.14	142.52	ITALY
JAPONI	10.46	12.89	11.83	15.64	JAPAN
KINE	1.26	1.32	1.29	1.39	CHINA
KUVAIT	21.79	23.73	23.03	26.74	KUWAIT
NORVEGJI	7.56	6.14	4.29	2.77	NORWAY
HOLLAND	-	4.40	9.98	10.59	NETHERLANDS
SPANJA	0.95	1.74	6.46	6.97	SPAIN
Kreditore Private (III)		230.00	422.60	530.00	Private Creditors(III)
KREDITORE PRIVATE		230.00	422.60	230.00	PRIVATE CREDITORS
EUROBONDI				300.00	EUROBOND
-Borxhi i riskeduluar (IV) (A+B)	75.93	70.75	88.94	83.55	-Rescheduled Debt (IV) (A+B)
-Klubi i Parisit (A)	27.36	27.21	25.60	26.56	-Paris Club (A)
GJERMANI	1.00	0.33	-	-	GERMANY
ITALI	2.75	2.66	2.49	2.40	ITALY
RUSI	23.61	24.22	23.11	24.16	RUSSIA
-Te tjere (B)	48.57	43.54	63.34	56.99	-Others (B)
TURQI	12.64	11.65	9.87	9.01	TURKEY
GREQI	-	-	27.70	25.70	GREECE
KINE	17.96	16.41	13.75	12.37	CHINA
HUNGARI	5.78	5.04	3.94	3.18	HUNGARY
GJERMANI	2.21	1.47	0.74	0.37	GERMANY
RUMANIA	2.76	2.50	2.07	1.82	ROMANIA
SLOVAKI	2.41	2.16	1.76	1.51	SLOVAK REP.
ÇEKI	4.82	4.31	3.51	3.03	CZECH REP.
GJITHSEJ (I+II+III+IV)	985.26	1,322.58	1,646.33	1,932.06	TOTAL (I+II+III+IV)

Ne kete table nuk perfshihet kredia e FMN-se

**) Deri me 31.12.2010, te dhena paraprake

IMF credit is not included

**) As of Dec. 31, 2010, data are preliminary

**BORXHI I JASHEM I GARANTUAR NGA QEVERIA QENDRORE
BORXHI NETO SIPAS KREDITOREVE**

**CENTRAL GOVERNMENT GUARANTEED DEBT
DEBT OUTSTANDING DISBURSED BY CREDITORS**

(in million EUR)

Sipas kreditoreve	31.12.2007	31.12.2008	31.12.2009	2010	By Creditors
-Shumepalesh (I)	85.06	106.50	128.61	122.28	-Multilateral (I)
EBRD	40.28	47.44	60.16	55.44	EBRD
EIB	44.78	59.06	68.45	66.84	EIB
-Dypalesh (II)	139.95	148.72	163.13	165.06	-Bilateral (II)
GJERMANI	41.76	45.79	62.49	64.40	GERMANY
GREQI	8.80	8.80	8.80	8.80	GREECE
ITALI	46.66	46.45	44.65	39.14	ITALY
JAPONI	25.92	32.15	29.74	33.34	JAPAN
KOREA	16.81	15.52	17.44	19.38	SOUTH KOREA
GJITHSEJ (I+II)	225.01	255.21	291.74	287.34	TOTAL (I+II)

**) Deri me 31.12.2010, te dhena paraprake

**) As of Dec. 31, 2010, data are preliminary

BORXHI I JASHEM* AFATGJATE I SHQIPERISE
BORXHI NETO SIPAS MONEDHAVE

LONG-TERM EXTERNAL PUBLIC DEBT*
DOD BY CURRENCY

(in million EUR)

Monedha Currency	2009		2010	
	Amount	%	Amount	%
ACU	50.78	2.62	65.85	2.97
EUR	1,069.97	55.21	1,265.85	57.04
JPY	41.56	2.14	48.98	2.21
KWD	23.03	1.19	26.74	1.20
KRW	17.44	0.90	19.38	0.87
SDR	614.31	31.70	666.51	30.03
USD	121.08	6.25	125.99	5.68
TOTAL	1,938.17	100.00	2,219.29	100.00

*) Përfshin borxhin e jashtëm shtetëror dhe shtetëror të garantuar

**) Deri më 31.12.2010, të dhëna paraprake

Nuk përfshihet kredia e FMN-se

*) Includes external public and external publicly guaranteed debt

**) As of Dec. 31, 2010, data are preliminary

IMF credit is not included

**BORXHI I JASHEM* AFATGJATE I SHQIPERISE
PJESA E PATERHEQUR E KREDIVE**

**LONG-TERM EXTERNAL PUBLIC DEBT*
COMMITTED UNDISBURSED BALANCE**

(in million EUR)

Sipas kreditoreve	2007	2008	2009	2010	By Creditors
-Shumepalesh (I)	399.83	429.74	405.56	391.89	-Multilateral (I)
CEB	38.13	38.82	62.01	40.75	CEB
EBRD	64.44	75.88	78.10	63.72	EBRD
EIB	117.83	109.06	80.88	103.60	EIB
IBRD	31.05	22.97	23.50	21.45	IBRD
IDA	102.65	122.26	100.27	85.99	IDA
IDB	22.73	41.69	34.97	54.10	IDB
IFAD	5.49	4.11	9.02	7.40	IFAD
OPEC	17.51	14.96	16.82	14.89	OPEC
-Dypalesh (II)	267.45	354.11	311.88	372.90	-Bilateral (II)
GJERMANI	58.20	54.96	49.34	125.30	GERMANY
GREQI			-	-	GREECE
ITALI	198.38	181.23	157.98	118.79	ITALY
JAPONI	-	87.55	85.88	100.00	JAPAN
KUVAIT	5.30	17.47	14.07	13.42	KUWAIT
AUSTRI			2.46	5.96	AUSTRIA
ArabiaSaudit				9.00	
HOLLANDE		8.05	2.15	0.43	NETHERLANDS
SPANJA	5.38	4.87	-	-	SPAIN
KOREA	0.19	-			SOUTH KOREA
GJITHSEJ (I+II)	667.27	783.85	717.44	764.79	TOTAL (I+II)

*) Përfshin borxhin shtetëror dhe shtetëror të garantuar

**) Deri më 31.12.2010, të dhëna paraprake

Ne këto tabele nuk përfshihen kredia e FMN-se

*) Includes Central Government and Central Government Guaranteed debt

**) As of Dec. 31, 2010, data are preliminary

IMF credit is not included

**BORXHI I JASHEM I QEVERISE QENDRORE
PJESA E PATERHEQUR E KREDIVE**

**CENTRAL GOVERNMENT EXTERNAL DEBT
COMMITTED UNDISBURSED BALANCE**

(in million EUR)

Sipas kreditoreve	2007	2008	2009	2010	By Creditors
-Shumepalesh (I)	316.85	362.15	371.24	363.35	-Multilateral (I)
CEB	38.13	38.82	62.01	40.75	CEB
EBRD	7.46	19.29	43.79	35.18	EBRD
EIB	91.83	98.06	80.88	103.60	EIB
IBRD	31.05	22.97	23.50	21.45	IBRD
IDA	102.65	122.26	100.27	85.99	IDA
IDB	22.73	41.69	34.97	54.10	IDB
IFAD	5.49	4.11	9.02	7.40	IFAD
OPEC	17.51	14.96	16.82	14.89	OPEC
-Dypalesh (II)	216.36	309.07	285.83	352.84	-Bilateral (II)
GJERMANI	23.72	25.14	38.52	120.36	GERMANY
GREQI	-	-	-	-	GREECE
ITALI	181.96	166.01	142.76	103.68	ITALY
JAPONI	-	87.55	85.88	100.00	JAPAN
KUVAIT	5.30	17.47	14.07	13.42	KUWAIT
AUSTRI	-	-	2.46	5.96	AUSTRIA
HOLLANDE	-	8.05	2.15	0.43	NEITHERLANDS
ArabiaSaudit	-	-	-	9.00	ArabiaSaudit
SPANJA	5.38	4.87	-	-	SPAIN
GJITHSEJ (I+II)	533.21	671.22	657.08	716.19	TOTAL (I+II)

**) Deri me 31.12.2010, te dhena paraprake
Ne kete tabele nuk perfshihet kredia e FMN-se

**) As of Dec. 31, 2010, data are preliminary
IMF credit is not included

**BORXHI I JASHEM I GARANTUAR NGA QEVERIA QENDRORE
PJESA E PATERHEQUR E KREDIVE**

**CENTRAL GOVERNMENT GUARANTEED DEBT
COMMITTED UNDISBURSED BALANCE**

(in million EUR)

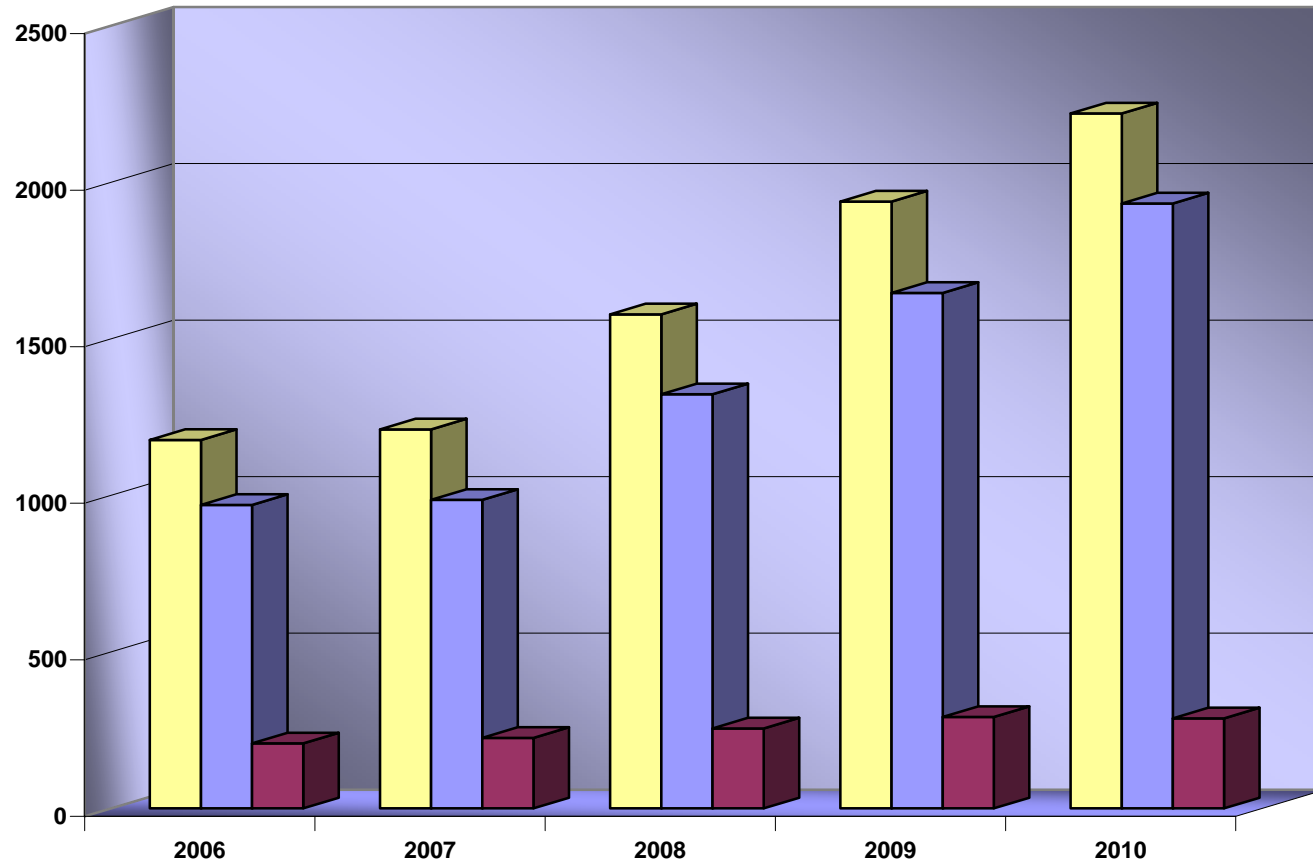
Sipas kreditoreve	2007	2008	2009	2010	By Creditors
-Shumepalesh (I)	82.98	67.59	34.32	28.54	-Multilateral (I)
EBRD	56.98	56.59	34.32	28.54	EBRD
EIB	26.00	11.00	-	-	EIB
-Dypalesh (II)	51.09	45.04	26.05	20.05	-Bilateral (II)
GJERMANI	34.48	29.82	10.83	4.95	GERMANY
ITALI	16.42	15.22	15.22	15.11	ITALY
KOREA	0.19	-	-	-	SOUTH KOREA
GJITHSEJ (I+II)	134.07	112.63	60.36	48.60	TOTAL (I+II)

**) Deri me 31.12.2010, te dhena paraprake

**) As of Dec. 31, 2010, data are preliminary

Paraqitja Grafike e Ecurise se Stokut te Borxhit te Jashtem
External Outstanding Debt

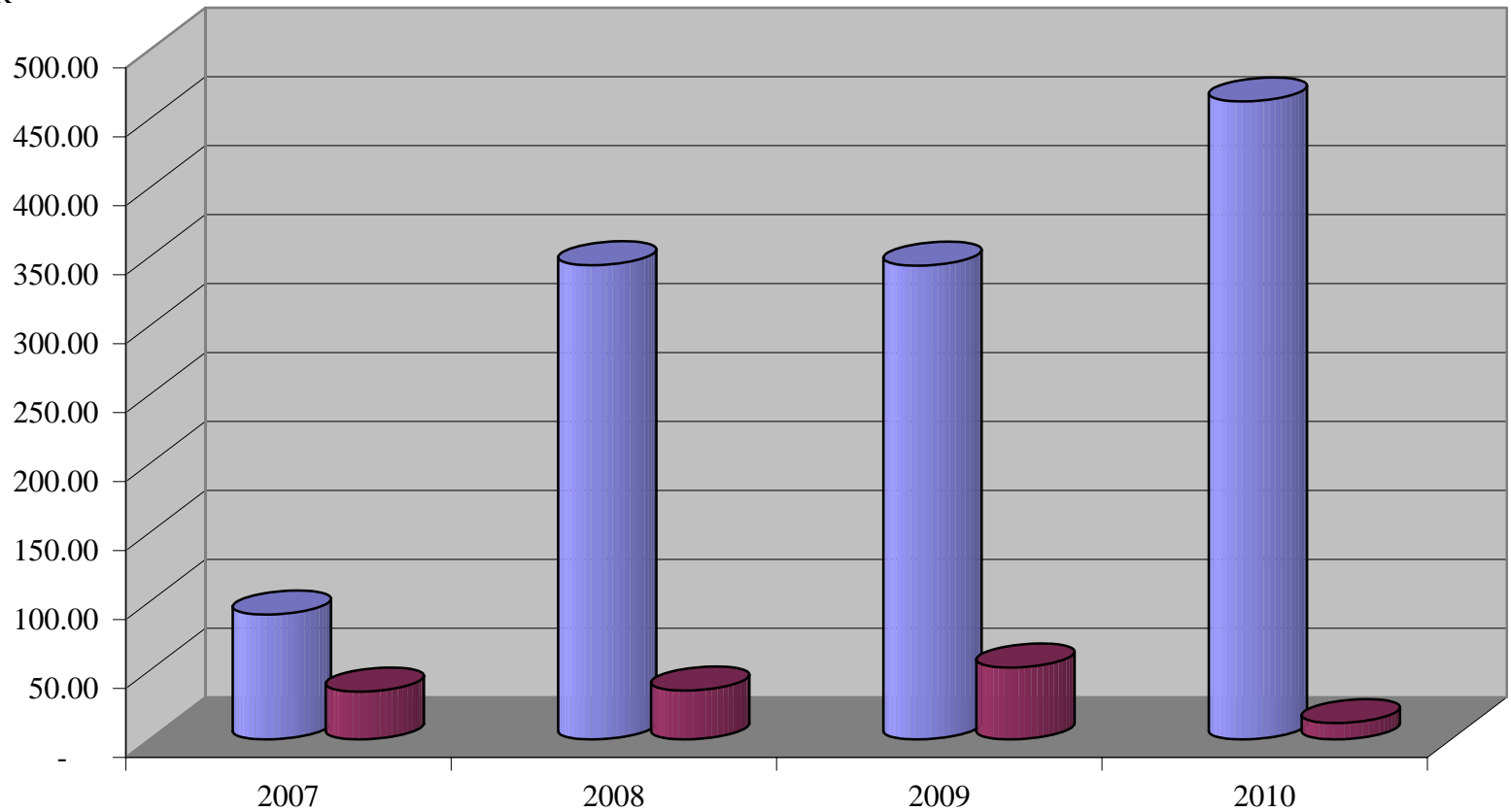
In million Euro



■ Stoku Total Total Debt outstanding ■ Stoku Shteteror Public Debt Outstanding ■ Stoku Garantuar Guaranteed Debt Outstanding

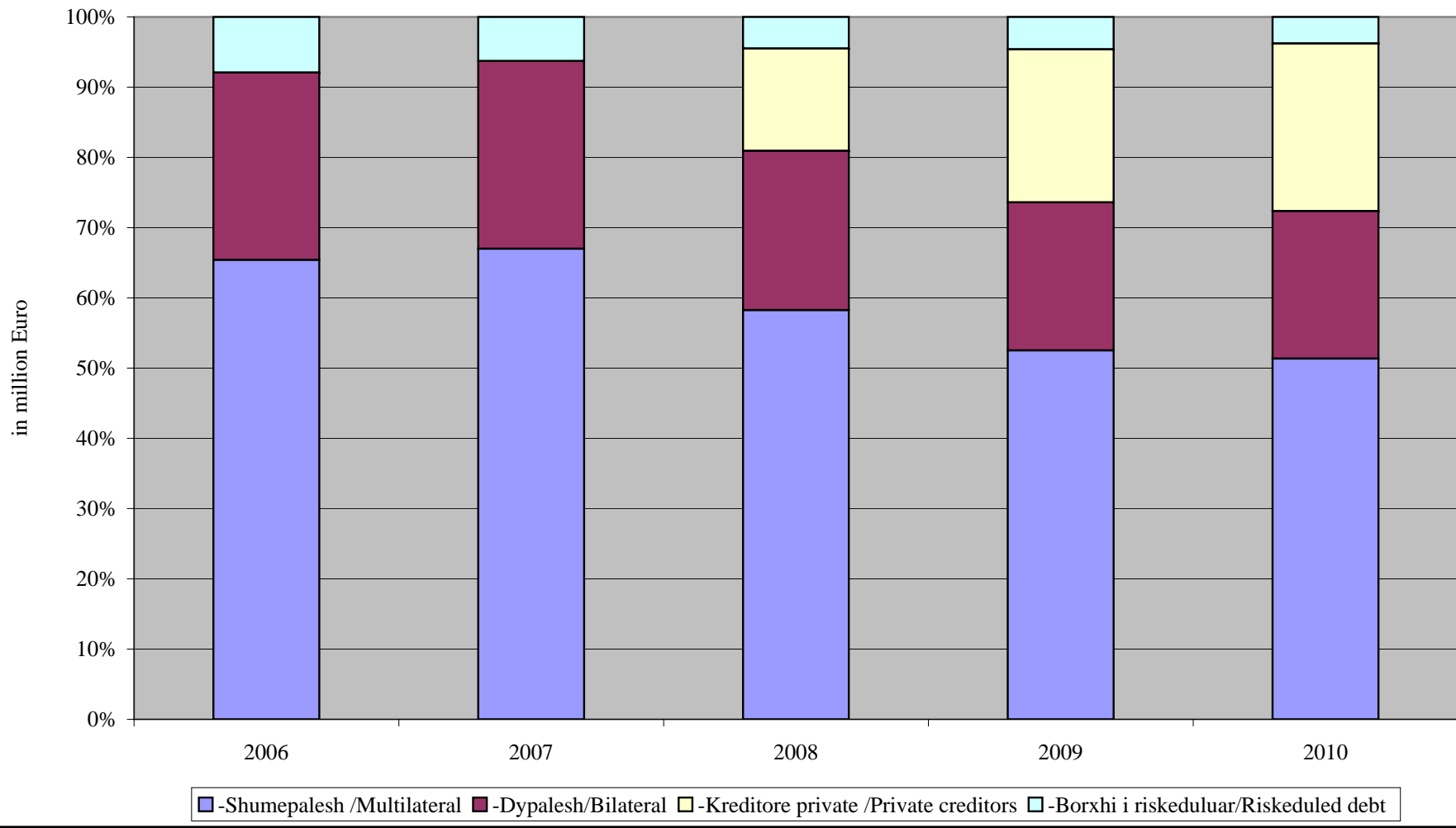
Ecuria e Disbursimeve te Borxhit te Jashtem External Debt Drawings

in million EUR



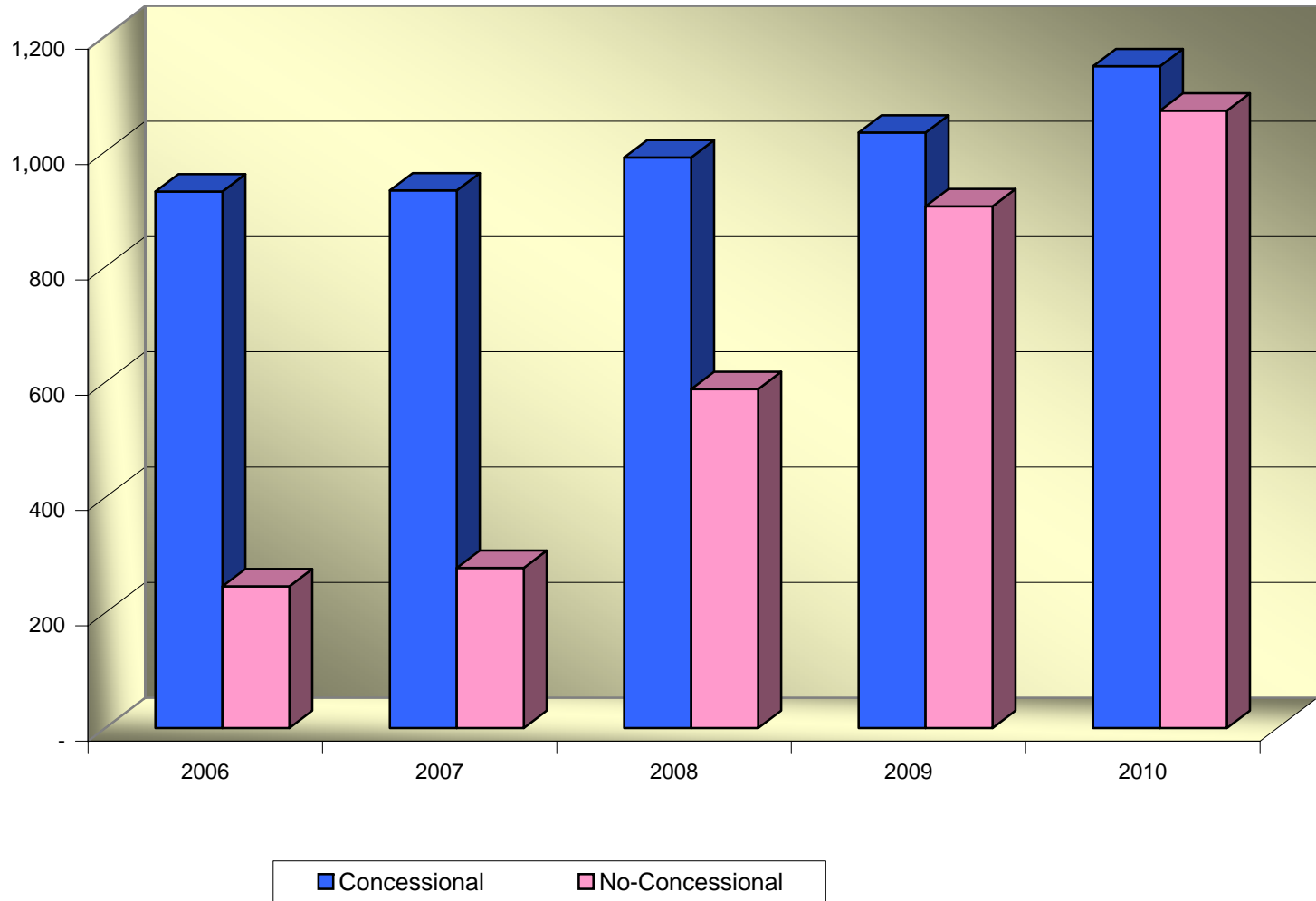
■ BJ Shtetroror/ Central Gov. Debt ■ BJ garantuar/ External Guaranteed Debt

Stoku i Borxhit te Jashtem Sipas Kreditoreve
Debt Outstanding by Creditor Type



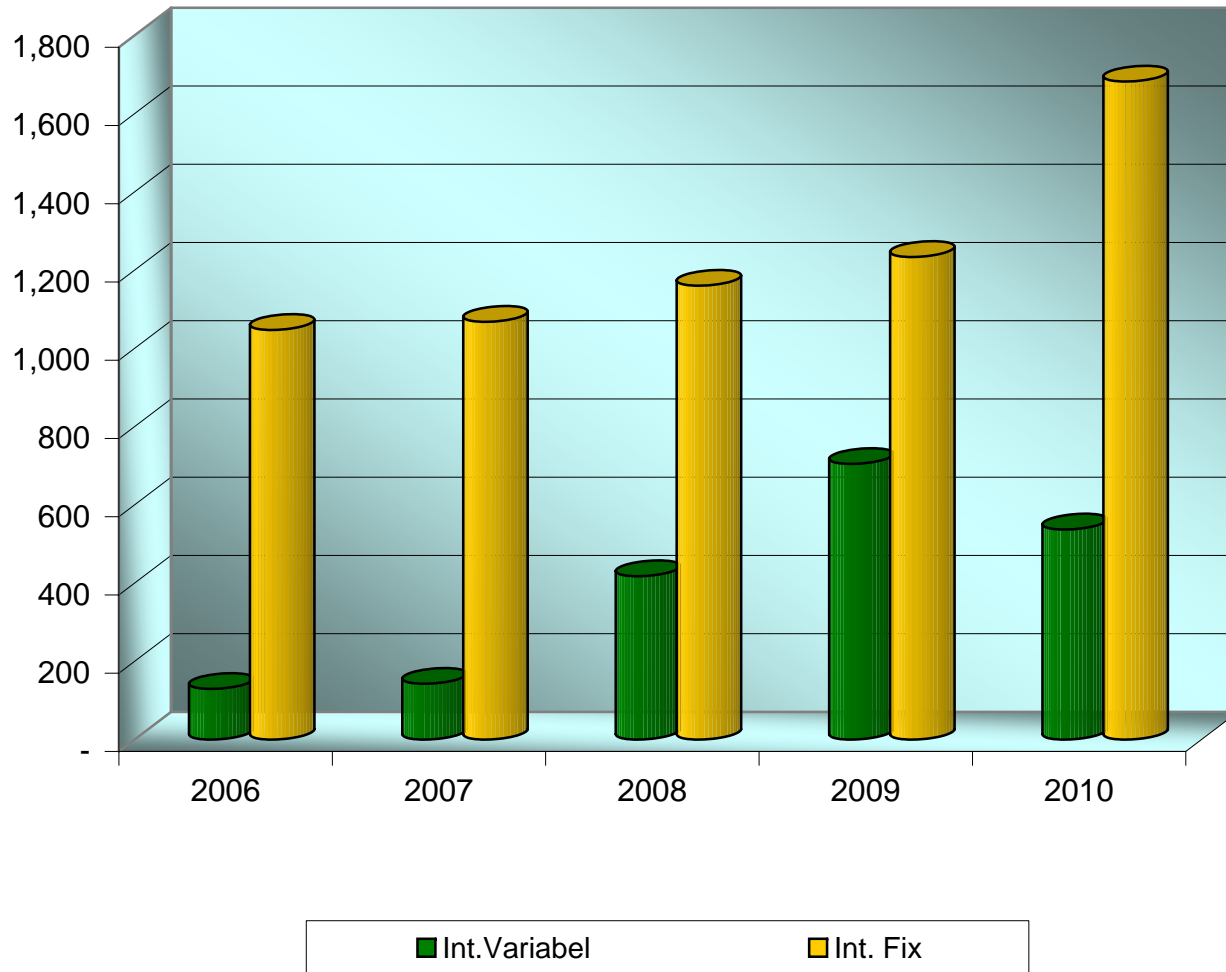
Stoku i Borxhit te Jashtem sipas Koncesionalitetit Debt Outstanding by Concessionality

in million Euro



Stoku i Borxhit te Jashtem sipas Interesit Debt Outstanding by Interest Type

in million Euro



Stoku i Borxhit te Jashtem sipas Monedhave
External Debt Outstanding by Currency

