



REPUBLIKA E SHQIPËRISE
MINISTRIA E FINANCAVE

DREJTORIA E PËRGJITHSHME E SHËRBIMEVE FINANCIARE
DREJTORIA E DREJTIMIT TË BORXHIT PUBLIK
Sektori i Shërbimit të Borxhit



Treguesit e Borxhit – 6/M I-re 2014

Debt Indicators as of June 30, 2014

Konceptoi: Juljeta Jorgo, specialist

Juli Lubonja, specialist

Irena Gjika , pergjegjes sektori

Konfirmoi: Irena Gjika, Pergjegjes sektori

Miratoi: Milbana Treska, Drejtor Drejtorie

Stoku i Borxhit Publik**
Public Debt Stock**

në milion Lekë

ALL milion

	2009	2010	2011	2012	2013	Q2 2014	
Borxhi Publik	682,547	715,517	772,735	828,268	885,083	918,049	Public Debt Stock
- Borxhi i Qeverisë Qëndrore	682,547	715,370	772,517	827,981	884,692	917,641	Central Government Debt Stock
- Borxhi i pushtetit lokal	-	147	218	288	391	408	Local Government Debt Stock
PBB*	1,148,082	1,222,462	1,282,300	1,326,000	1,358,000	1,418,000	GDP*
Stoku borxhit publik/PBB	59.45%	58.53%	60.26%	62.46%	65.18%	64.74%	Public Debt Stock/GDP
Stoku borxhit Qeverisë Qëndrore/PBB	59.45%	58.52%	60.24%	62.44%	65.15%	64.71%	Central Government Debt Stock/GDP
Stoku borxhit lokal/PBB	-	0.01%	0.02%	0.02%	0.03%	0.03%	Local Government Debt Stock/GDP

*PBB mbi baza vjetore/ Annual GDP

**Nuk perfshihen detyrimet e prapambetura të Qeverisë/Government arrears are not included

Borxhi i Qeverisë Qëndrore*
Central Government Debt Stock*

në milion Lekë

ALL milion

	2009	2010	2011	2012	2013	Q2 2014	
Borxhi i Qeverisë Qëndrore, nga i cili:	682,547	715,370	772,517	827,981	884,692	917,641	Central Government Debt Stock, of which:
-Borxhi i brëndshëm	415,028	407,372	438,582	470,358	520,786	543,425	-Domestic Debt
-Borxhi i jashtëm*	267,519	307,999	333,935	357,622	363,906	374,216	-Foreign Debt

*Nuk perfshihen detyrimet e prapambetura të Qeverisë/Government arrears are not included

Borxhi i Qeverisë Qëndrore*
Central Government Debt Stock*

në milion Lekë

ALL milion

	2009	2010	2011	2012	2013	Q2 2014	
Borxhi i Qeverisë Qëndrore, nga i cili:	682,547	715,371	772,516	827,981	884,692	917,641	Central Government Debt Stock, of which:
-Borxhi i Qeverisë	636,773	669,946	724,200	774,528	833,367	866,474	-Central Government Debt
-Borxhi i garantuar nga Qeveria	45,775	45,425	48,316	53,453	51,324	51,167	-Central Government Guaranteed Debt

*Nuk perfshihen detyrimet e prapambetura të Qeverisë/Government arrears are not included

Borxhi i Qeverisë Qëndrore*
Gross Central Government Debt position*

në milion Lekë

ALL milion

	2013 Q3	2013 Q4	2014 Q1	2014 Q2	
Gross Central Government Debt					Gross Central Government Debt
<u>Sipas maturimit dhe Instrumentave</u>	<u>872,531</u>	<u>884,692</u>	<u>897,386</u>	<u>917,643</u>	<u>By maturity and type of instrument:</u>
Afatshkurter sipas maturimit origjinal	269,272	265,700	269,666	277,332	Short-term by original maturity
Letra me Vlere te Borxhit	249,249	245,782	247,900	256,197	Debt securities
Kredi	20,023	19,918	21,766	21,135	Loans
Afatgjate sipas maturimit origjinal	603,259	618,992	627,720	640,311	Long-term, by original maturity:
Me shlyerje brenda nje viti	60,807	53,860	50,723	54,347	With payment due in one year or less:
Letra me Vlere te Borxhit	59,690	52,930	50,001	53,828	Debt securities
Kredi	1,117	930	722	520	Loans
Me shlyerje mbi nje vit	542,452	565,132	576,997	585,963	With payment due in more than one year:
Letra me Vlere te Borxhit	213,678	244,216	253,711	254,343	Debt securities
Kredi	328,774	320,916	323,286	331,620	Loans
Borxhi gjithsej	872,531	884,692	897,386	917,643	Total gross debt
Letra me Vlere te Borxhit	522,616	542,928	551,613	564,368	Debt securities
Kredi	349,915	341,764	345,774	353,274	Loans
<u>Sipas Monedhes se emetimit</u>	<u>872,531</u>	<u>884,692</u>	<u>897,386</u>	<u>917,643</u>	<u>By currency of denomination:</u>
Monedhe Kombetare	481,486	501,364	511,024	528,763	Domestic currency
Monedhe e Huaj	391,045	383,328	386,363	388,880	Foreign currency
<u>Sipas rezidences se kreditoreve</u>	<u>872,531</u>	<u>884,692</u>	<u>897,386</u>	<u>917,643</u>	<u>By residence of the creditor:</u>
Kreditore vendas	511,204	531,861	542,377	554,504	Domestic creditors
Kreditore te huaj	361,327	352,831	355,009	363,139	External creditors

*) Përfshin borxhin e jashtëm dhe të brendshëm, shtetëror dhe të garantuar. Nuk përfshihen detyrimet e prapambetura të Qeverisë

*) Includes government external and domestic debt and Government guaranteed debt. Government arrears are not included

Stoku i Borxhit të Qeverisë Qëndrore**
Central Government Debt Stock

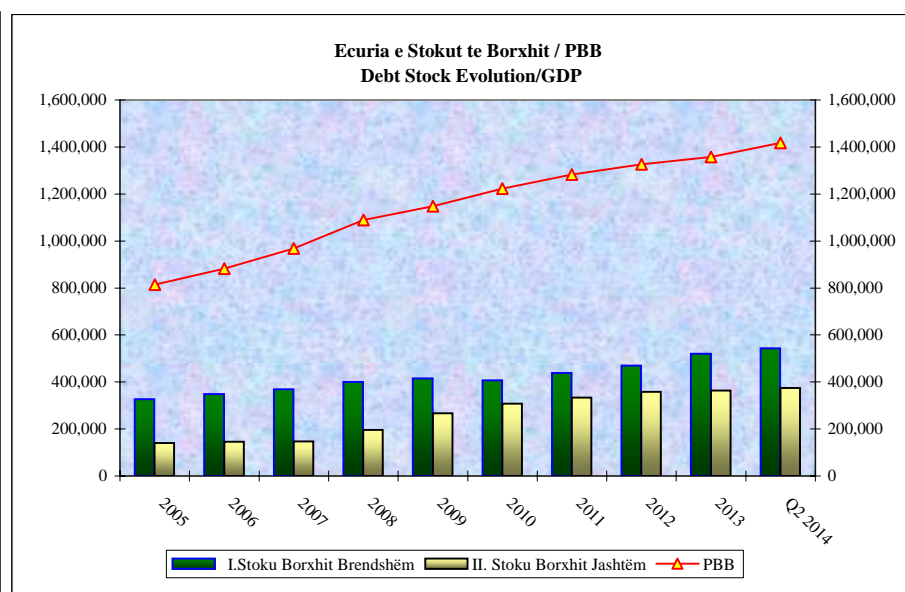
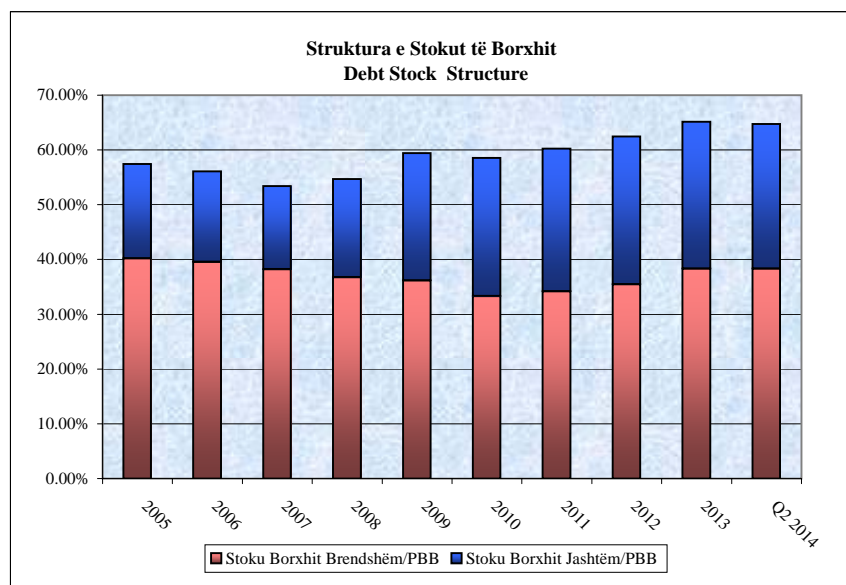
në milion Lekë

ALL milion

	2004	2005	2006	2007	2008	2009	2010	2011	2012	2013	Q2 2014	
Stoku Borxhit** Gjithsej (I+II)	423,962	468,050	494,737	517,031	595,883	682,546	715,371	772,517	827,981	884,692	917,641	Total Debt Stock**
I.Stoku Borxhit Brendshëm	295,200	327,353	348,935	369,536	400,456	415,028	407,372	438,582	470,358	520,786	543,425	Domestic Debt Stock
-shtetëror	295,200	327,353	348,935	369,536	395,504	409,501	401,821	429,925	454,695	500,868	522,290	Central Government Debt
-garantuar					4,952	5,527	5,551	8,657	15,663	19,918	21,135	Central Government Guaranteed Debt
II. Stoku Borxhit Jashtëm	128,762	140,697	145,802	147,495	195,427	267,518	307,999	333,935	357,622	363,906	374,216	External Debt Stock
-shtetëror	109,161	119,256	120,147	120,094	163,831	227,271	268,124	294,276	319,833	332,500	344,184	Central Government Debt
-garantuar	19,601	21,440	25,655	27,401	31,596	40,247	39,875	39,659	37,790	31,406	30,032	Central Government Guaranteed Debt
PBB	751,022	814,797	882,209	967,670	1,089,293	1,148,082	1,222,462	1,282,300	1,326,000	1,358,000	1,418,000	GDP*
Stoku Borxhit Gjithsej/PBB	56.45%	57.44%	56.08%	53.43%	54.70%	59.45%	58.52%	60.24%	62.44%	65.15%	64.71%	Total Debt Stock/GDP
Stoku Borxhit Brendshëm/PBB	39.31%	40.18%	39.55%	38.19%	36.76%	36.15%	33.32%	34.20%	35.47%	38.35%	38.32%	Domestic Debt Stock/GDP
Stoku Borxhit Jashtëm/PBB	17.14%	17.27%	16.53%	15.24%	17.94%	23.30%	25.19%	26.04%	26.97%	26.80%	26.39%	External Debt Stock/GDP

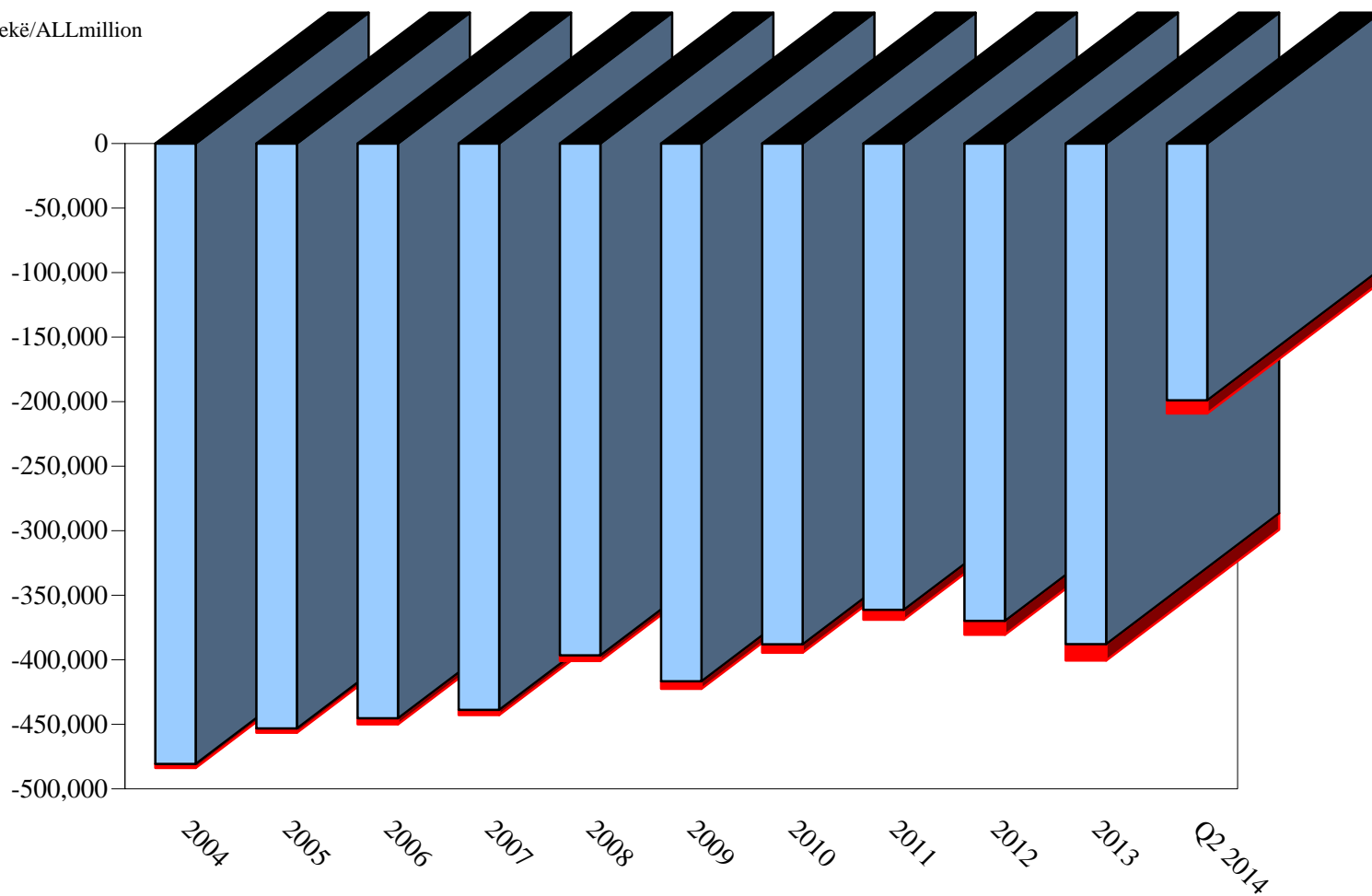
*PBB mbi baza vjetore/ Annual GDP

**) nuk përfshihen detyrimet e prapambetura ndaj biznesit



Maturime/Maturities

në milion lekë/ALLmillion



■ Maturime Bono & Obligacione ■ Principali Borxhit të Jashtëm

**Shërbimi i Borxhit
Debt Service**

në milion Lekë

ALL milion

	2004	2005	2006	2007	2008	2009	2010	2011	2012	2013	Q2 2014	
Shërbimi Borxhit gjithsej (I+II)	31,448	29,393	29,596	29,693	35,555	42,061	48,116	48,734	52,166	56,109	30,614	Total Debt Service (I+II)
Interesat e Borxhit Gjithsej (I)	28,423	26,029	25,006	25,594	31,307	36,301	41,604	41,121	41,497	43,335	20,489	Total interests (I)
Interesat e Borxhit të Brëndshëm	26,711	24,184	22,978	23,499	28,386	31,408	35,583	34,253	34,005	35,890	17,937	Domestic Debt Interests
Interesat e Borxhit të Jashtëm	1,712	1,845	2,028	2,096	2,921	4,893	6,021	6,868	7,492	7,445	2,552	External Debt Interests
Principali Borxhit të Jashtëm (II)	3,025	3,364	4,590	4,098	4,248	5,760	6,512	7,613	10,669	12,774	10,125	Repayments (II)
PBB*	751,022	814,797	882,209	967,670	1,089,293	1,148,082	1,222,462	1,282,300	1,326,000	1,358,000	1,418,000	GDP*
Shërbimi Borxhit gjithsej/ PBB	4.19%	3.61%	3.35%	3.07%	3.26%	3.66%	3.94%	3.80%	3.93%	4.13%	2.16%	Total Debt Service /GDP
Interesat e Borxhit Gjithsej/PBB	3.78%	3.19%	2.83%	2.64%	2.87%	3.16%	3.40%	3.21%	3.13%	3.19%	1.44%	Total Interests/GDP
Interesat e Borxhit Brëndshëm/PBB	3.56%	2.97%	2.60%	2.43%	2.61%	2.74%	2.91%	2.67%	2.56%	2.64%	1.26%	Domestic Debt Interests/GDP
Interesat e Borxhit Jashtëm/PBB	0.23%	0.23%	0.23%	0.22%	0.27%	0.43%	0.49%	0.54%	0.57%	0.55%	0.18%	External Debt Interests /GDP
Principali B.Jashtëm/ PBB	0.40%	0.41%	0.52%	0.42%	0.39%	0.50%	0.53%	0.59%	0.80%	0.94%	0.71%	Repayments/GDP
Stoku Borxhit Gjithsej	423,962	468,050	494,737	517,031	595,883	682,546	715,371	772,517	827,981	884,692	916,941	Total Debt Stock
Interesat e Borxhit Gjithsej/Stoku gjithsej	6.70%	5.56%	5.05%	4.95%	5.25%	5.32%	5.82%	5.32%	5.01%	4.90%	2.23%	Total Debt Service/Total Debt Stock

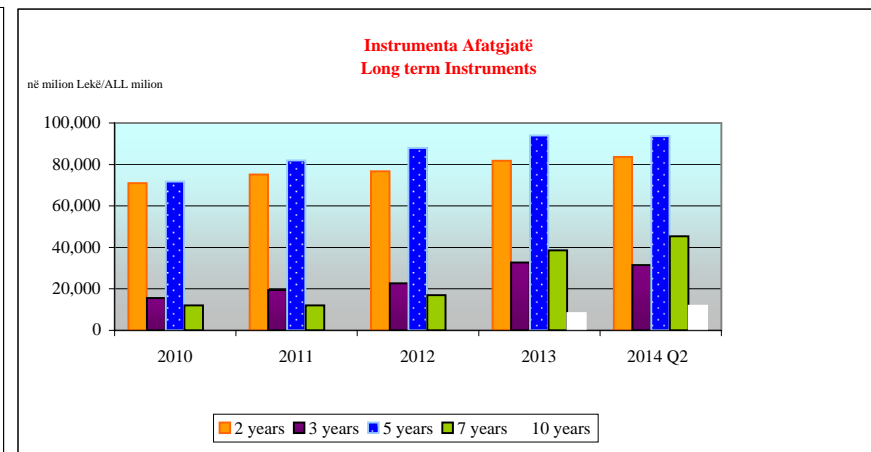
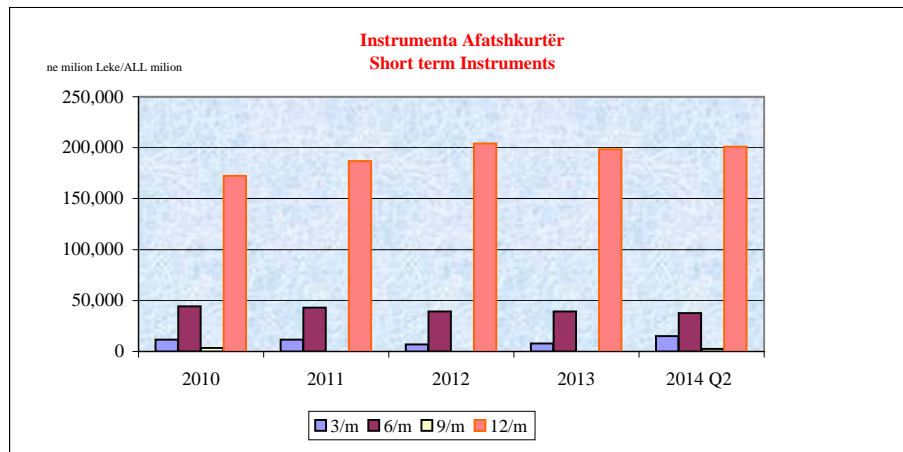
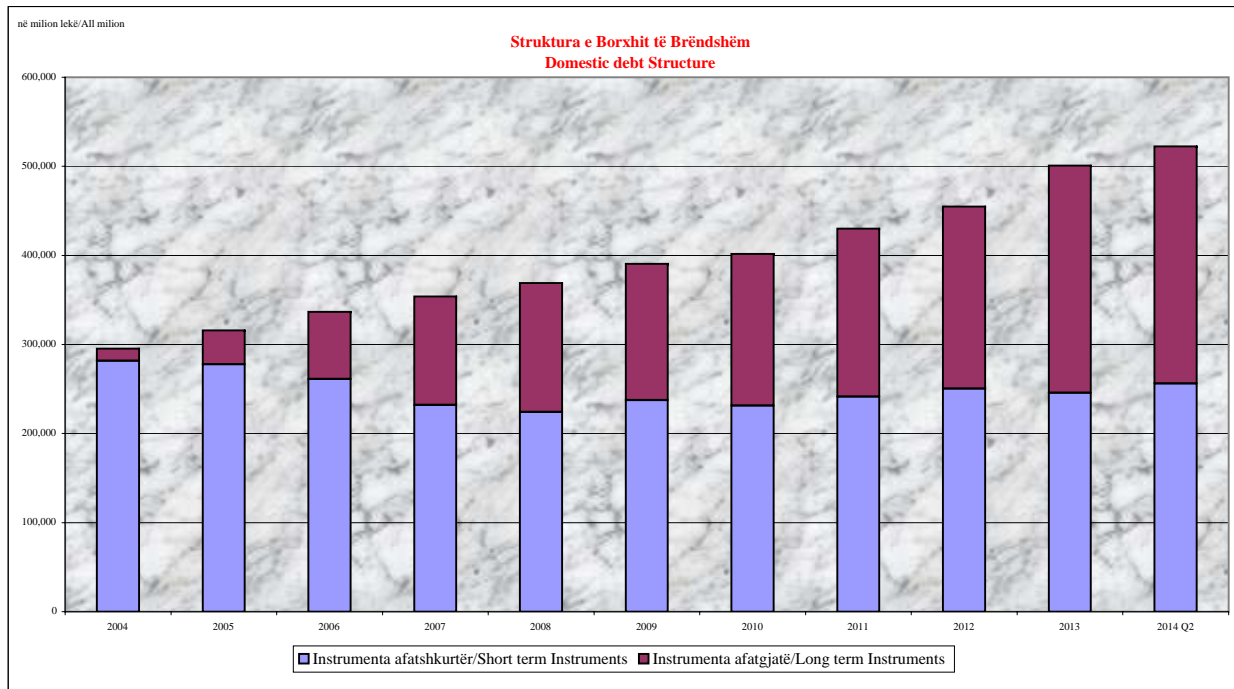
*PBB mbi baza vjetore/ Annual GDP

Stoku i Borxhit të Brëndshëm sipas instrumentave
Domestic Debt Stock by Instruments

në milion Lekë

ALL milion

	31.12.2010		31.12.2011		31.12.2012		31.12.2013		30.06.2014		
	shuma/amount	%	shuma/amount	%	shuma/amount	%	shuma/amount	%	shuma/amount	%	
Stoku i Borxhit Gjithsej	407,372		438,582		470,358		520,786		543,425		Total Debt Stock
I.Borxhi Shtetëror	401,821	98.64	429,924	98.03	454,695	96.67	500,868	96.18	522,290	96.11	I.Public Debt
I. Instrumenta afatshkurtër	231,436	56.81	241,385	55.04	250,352	53.23	245,782	47.19	256,197	47.14	I.Short term Instruments
Bono Thesari 3/M	11,495	2.82	11,579	2.64	6,998	1.49	7,959	1.53	15,077	2.77	3 Month Bills
Bono Thesari 6/M	44,188	10.85	42,914	9.78	39,129	8.32	39,242	7.54	37,769	6.95	6 Month Bills
Bono Thesari 9/M	3,317	0.83	0	0.00	0	0.00	0	0.00	2,439	0.47	9 Month Bills
Bono Thesari 12/M	172,436	42.33	186,892	42.61	204,225	43.42	198,581	38.13	200,913	36.97	1 Year Bills
II. Instrumenta afatgjatë	170,385	41.83	188,539	42.99	204,343	43.44	255,086	48.98	266,093	48.97	II. Long term Instruments
Obligacione 2/ Vjeçare	70,957	17.42	75,141	17.13	76,742	16.32	81,731	15.69	83,578	15.38	2 Year Note
Obligacione 3/ Vjeçare	15,613	3.83	19,387	4.42	22,625	4.81	32,655	6.27	31,484	5.79	3 Year Note
Obligacione 5/ Vjeçare	71,815	17.63	82,012	18.70	87,994	18.71	93,910	18.03	93,739	17.25	5 Year Note
Obligacione 7/ Vjeçare	12,000	2.95	12,000	2.74	16,982	3.61	38,517	7.40	45,415	8.36	7 Year Note
Obligacione 10/ Vjeçare							8,274	1.59	11,877	2.19	10 Year Note
II.Borxhi i Garantuar	5,551	1.36	8,657	1.97	15,663	3.33	19,918	3.82	21,135	3.89	II.Publicly Guaranteed Debt
Garanci e Tregut të Brëndshëm	5,551	1.36	8,657	1.97	15,663	3.33	19,918	3.82	21,135	3.89	Domestic Guarantees



Financimi me huamarrje të brëndshme i Deficitit Buxhetor
Domestic Deficit Financing

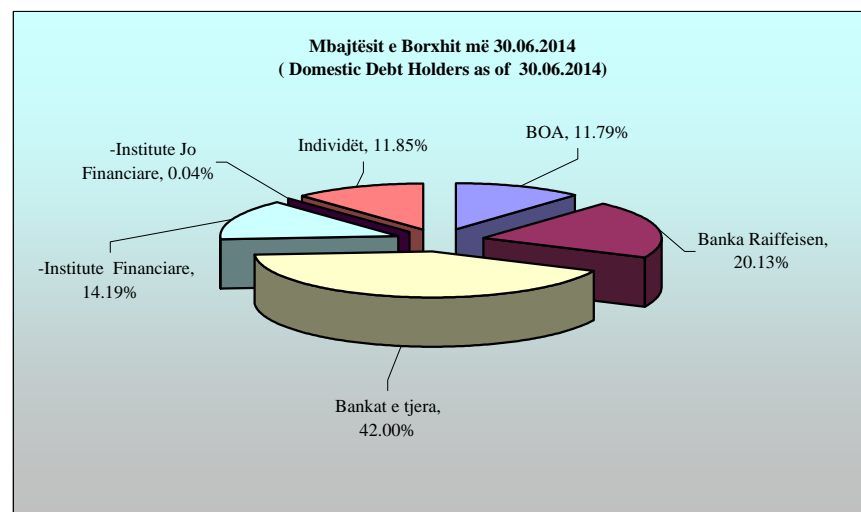
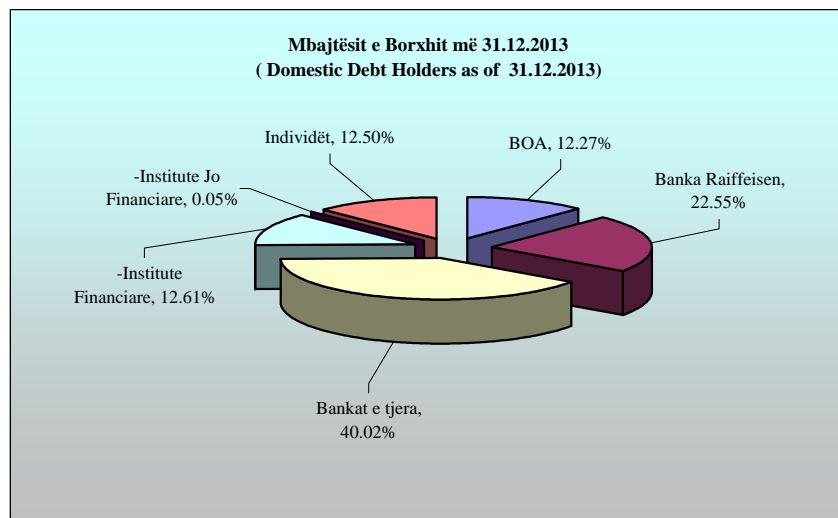
në milion Lekë

ALL milion

Periudha	2014 Q2	
Financimi i Deficitit	21,419.10	Deficit financing
Nga i cili:		of which :
Instrumenta Afatshkurtër	10,413.90	Short term instruments
- Bono Thesari Lekë	10,413.90	Tbills (leke)
- Bono Thesari Euro	0.00	Tbills (EURO)
Instrumenta Afatgjatë	11,005.20	Long term instruments
- Obligacione të qeverisë 2 vjeçare	1,846.00	2 y bonds
- Obligacione të qeverisë 3 vjeçare	-1,170.50	3 y bonds
- Obligacione të qeverisë 5 vjeçare	-170.30	5 y bonds
- Obligacione të qeverisë 7 vjeçare	6,897.70	7 y bonds
- Obligacione të qeverisë 10 vjeçare	3,602.30	10 y bonds
- Obligacione të qeverisë 2 vjeçare Euro	0.00	2 y bonds EUR
PBB	1,418	GDP
Financimi i Deficitit / PBB	1.51%	Deficit financing / GDP
Instrumenta Afatshkurtër / PBB	0.73%	Short term instruments / GDP
Instrumenta Afatgjatë / PPB	0.78%	Long term instruments / GDP

Mbajtësit e Borxhit të Brëndshëm *
Domestic Debt Holders *

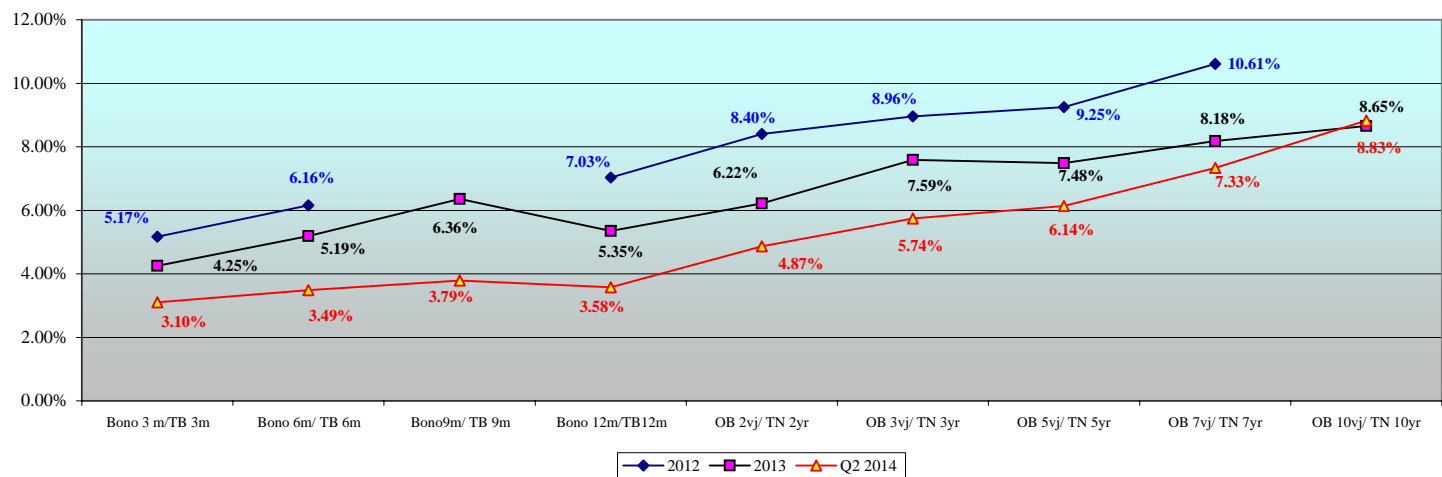
	31.12.2010	31.12.2011	31.12.2012	31.12.2013	31.03.2014	30.06.2014	
BOA	15.41%	14.30%	12.48%	12.27%	12.06%	11.79%	BOA
Banka Raiffeisen	34.90%	34.20%	29.43%	22.55%	21.79%	20.13%	Raiffeisen Bank
Bankat e tjera	34.40%	34.85%	37.45%	40.02%	40.37%	42.00%	Other Banks
Jo Banka	3.21%	3.73%	6.16%	12.66%	13.57%	14.23%	Non Banks
-Institute Financiare	1.16%	3.69%	6.06%	12.61%	13.53%	14.19%	-Finan. Inst.
-Institute Jo Financiare	2.05%	0.04%	0.10%	0.05%	0.04%	0.04%	-Non Finan. Inst.
Individët	12.08%	12.92%	14.48%	12.50%	12.21%	11.85%	Individuals



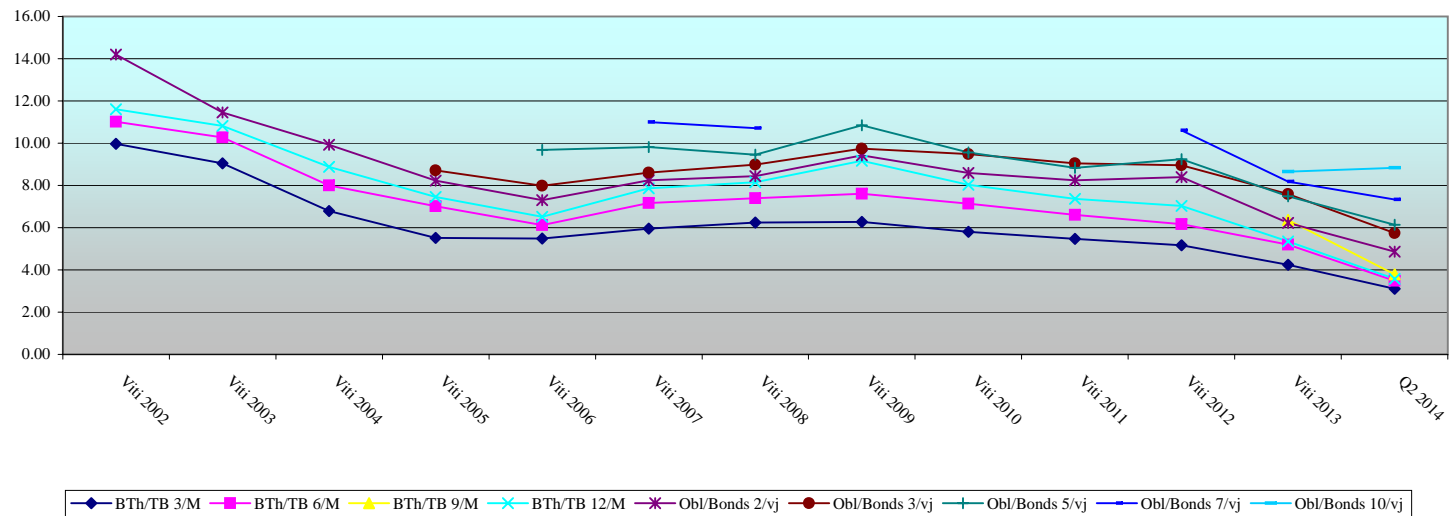
*) Nuk përfshihen Rivleresimi i valutës dhe Garancitë.

*) Foreign exchange reserves reevaluation and Guarantees are not included

Kurba e Yield-it te Letrave me Vlerë mesatar i Ponderuar
Average Yield Curve Of Albanian Securities



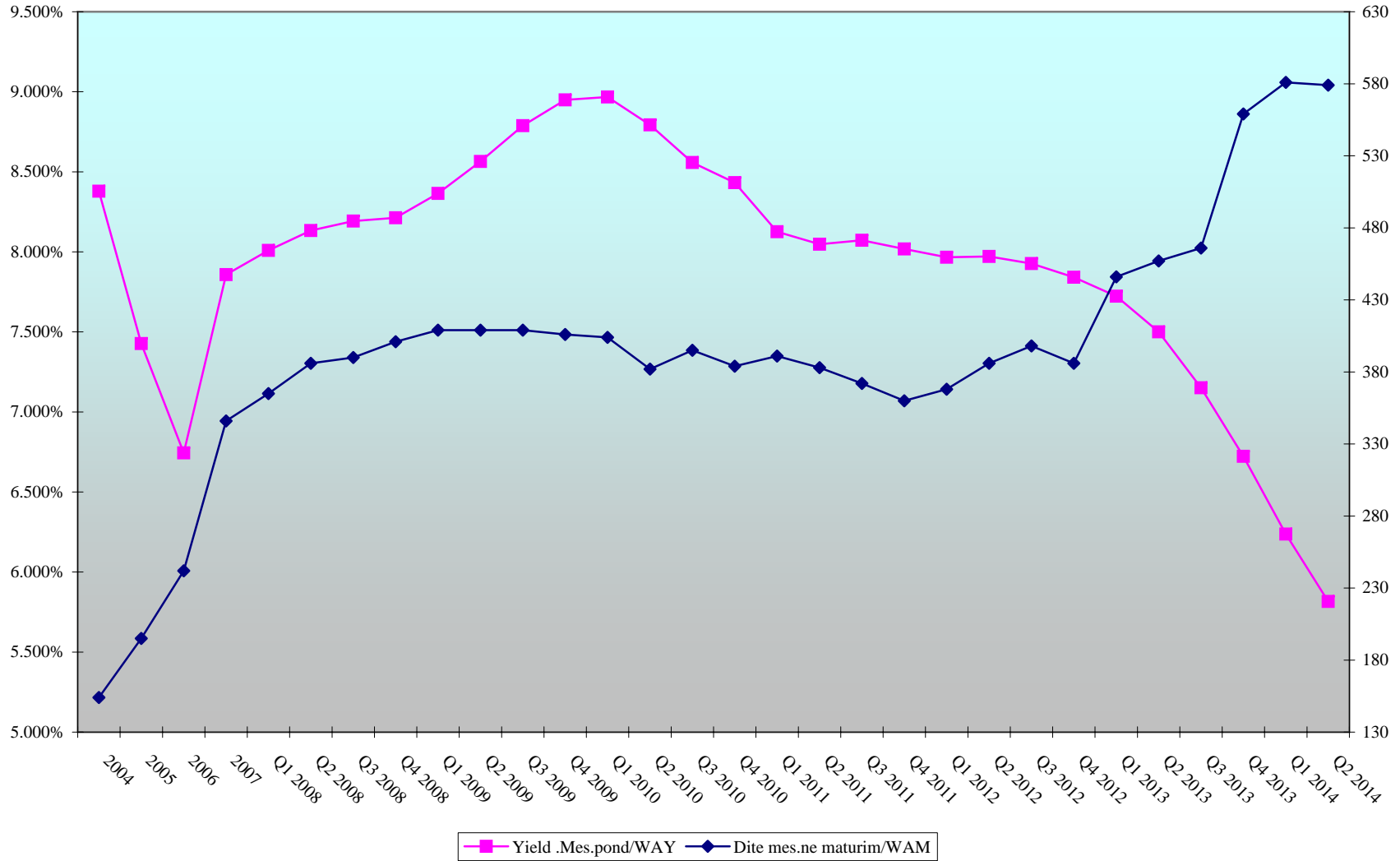
Interesi mesatar ponderuar i Letrave me vlerë në vite sipas Instrumentave
Average Yield Curve in years by Instruments



Letrat me vlerë të Qeverisë
Yield Mesatar & Ditë Mesatare në maturim
Albanian Government Securities
Weighted Average Yield & Weighted Average Maturity

Yield

Ditë/Days



Ditë Mesatare në Maturim & Yield-i Mesatar i Ponderuar
Weighted Average Yild & Weighted Average Maturity

	DMM WAM	YMP WAY	DMM (pa BoA) WAM (with out BoA)	YMP (pa BoA) WAY(with out BoA)
31,12,1994	74	13.868	76	14.232
31,12,1995	173	15.399	173	15.399
31,12,1996	162	20.363	162	20.354
31,12,1997	160	34.19	153	34.207
31,12,1998	162	27.352	176	27.777
31,12,1999	133	18.359	139	18.423
31,12,2000	118	11.822	137	12.707
31,12,2001	112	9.400	127	9.594
31,12,2002	124	11.445	144	11.516
31,12,2003	135	9.885	156	10.294
31,12,2004	154	8.379	173	8.706
31,12,2005	195	7.427	223	7.589
31,12,2006	242	6.744	284	6.807
31,12,2007	346	7.858	409	8.070
31.12.2008	401	8.213	470	8.461
31.12.2009	406	8.949	471	9.236
31.12.2010	384	8.432	438	8.705
31.12.2011	360	8.018	404	8.256
31.01.2012	350	7.986	391	8.241
29.02.2012	364	7.963	405	8.213
31.03.2012	368	7.966	408	8.212
30.04.2012	359	7.956	396	8.197
31.05.2012	379	7.958	418	8.202
30.06.2012	386	7.971	428	8.220
31.07.2012	382	7.964	421	8.210
31.08.2012	394	7.933	437	8.190
30.09.2012	398	7.927	442	8.162
31.10.2012	384	7.917	428	8.145
30.11.2012	398	7.884	442	8.101
31.12.2012	386	7.840	428	8.049
31.01.2013	398	7.806	438	8.023
28.02.2013	425	7.760	469	8.016
31.03.2013	446	7.723	491	7.942
30.04.2013	435	7.687	480	7.904
31.05.2013	458	7.580	505	7.813
30.06.2013	457	7.500	505	7.730
31.07.2013	457	7.411	503	7.658
31.08.2013	463	7.261	512	7.513
30.09.2013	466	7.146	518	7.396
31.10.2013	510	7.031	569	7.279
30.11.2013	517	6.954	584	7.218
31.12.2013	559	6.719	624	6.978
31.01.2014	570	6.497	631	6.794
28.02.2014	576	6.347	635	6.657
31.03.2014	581	6.237	641	6.560
30.04.2014	575	6.162	637	6.482
31.05.2014	579	5.929	638	6.253
30.06.2014	579	5.816	638	6.131

Ecuria e Struktures së Borxhit të Brëndshëm & Yield-i Mesatar i Ponderuar
Evolution of Domestic Debt Structure and Weighted Average Yield

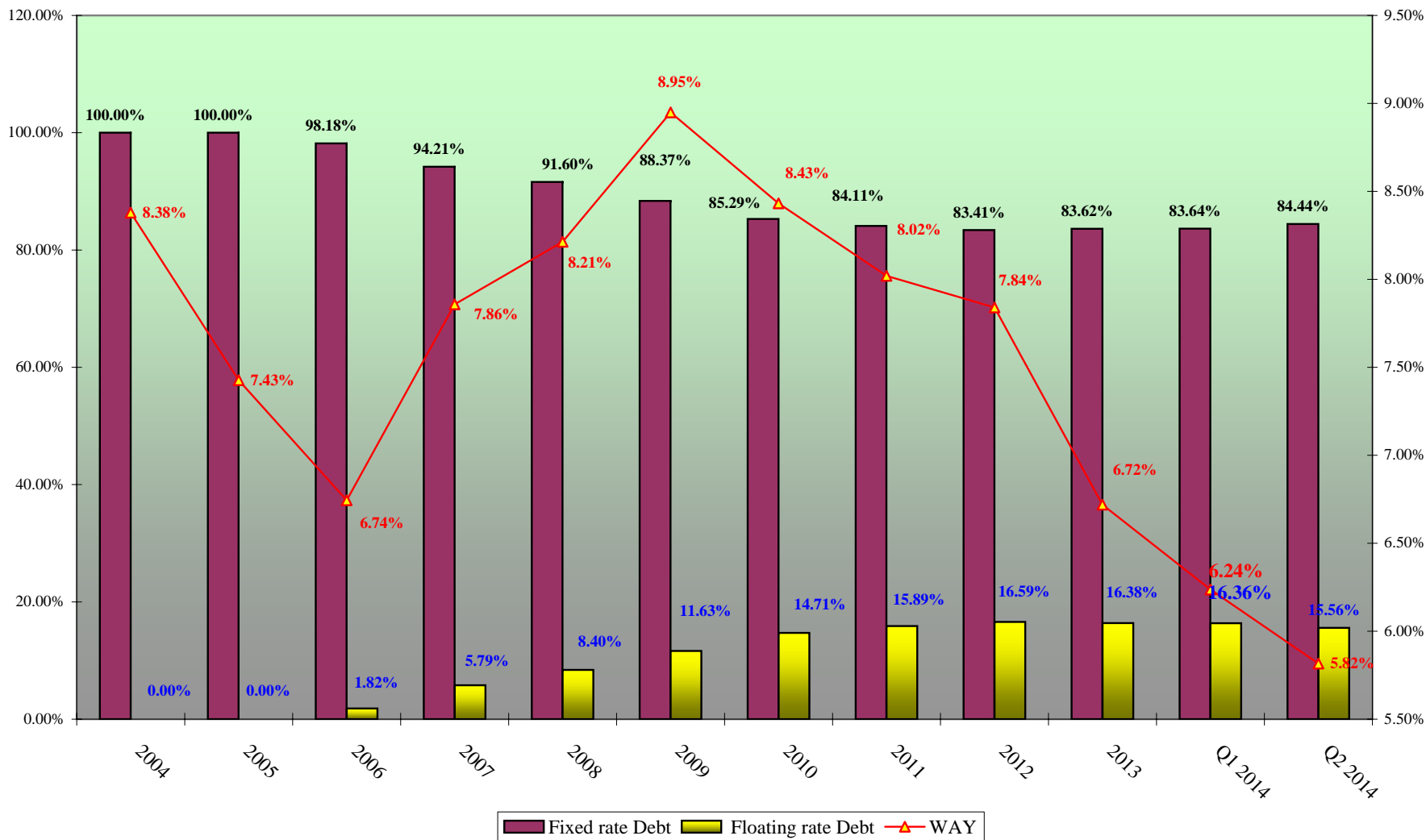


TABELA I - TABLE I
BORXHI I JASHTËM* I SHQIPËRISË
TE DHËNA PËRMBLEDHËSE

EXTERNAL DEBT* OF ALBANIA
SUMMARIZED DATA

Klasifikimi	Deri më 31.12.2007 Up to 31.12.2007	2008	2009	2010	2011	2012	2013	2014** Q2	GJITHSEJ TOTAL	(in million EUR)	
										Classification	
I. TE DHËNA KUMULATIVE											
Borxhi Neto	1,211.16	1,578.56	1,939.10	2,219.49	2,403.62	2,561.95	2,595.62	2,668.02	2,668.02	I. CUMULATIVE DATA (STOCK)	
Tërheqjet	1,691.49	2,070.68	2,466.52	2,939.41	3,161.42	3,439.27	3,624.30	3,756.33	3,756.33	Debt Outstanding Disbursed (DOD)	
Pagesat e Borxhit	458.43	534.62	641.62	950.61	1,080.91	1,223.03	1,374.44	1,467.25	1,467.25	Drawings	
-Principjal	241.89	287.77	344.94	603.93	678.32	762.97	859.64	933.67	933.67	Debt Service	
-Interes	216.51	246.85	296.68	346.68	402.59	460.06	514.80	533.58	533.58	-Principal	
Borxhi i nënshkruar i patërhequr	667.22	785.59	718.28	765.62	856.05	757.54	812.37	1,183.03	1,183.03	-Interest	
II. TE DHËNA VJETORE											
Tërheqjet	125.09	379.19	395.84	472.89	222.01	277.85	185.04	132.02	2,189.93	Committed Undisbursed Balance (CUB)	
Pagesat e Borxhit	63.68	75.98	107.00	309.00	130.30	142.12	151.41	92.81	1,072.29	II. ANNUAL DATA (FLOWS)	
-Principjal	40.67	45.60	57.17	259.00	74.39	84.65	96.67	74.03	732.17	Drawings	
-Interes	23.01	30.38	49.83	50.00	55.91	57.47	54.74	18.78	340.12	Debt Service	

*) Përfshih borxhin shtetëror dhe shtetëror të garantuar (Tabela I.1 + Tabela I.2)

**) Deri më 30.06.2014, të dhëna paraprake

*) Includes Central Government and Central Government Guaranteed debt (Table I.1 + Table I.2)

**) As of June 30, 2014, data are preliminary

TABELA I.1 - TABLE I.1
BORXHI I JASHTËM I QEVERISË QËNDRORE
TË DHËNA PËRMBLEDHËSE

CENTRAL GOVERNMENT EXTERNAL DEBT
SUMMARIZED DATA

Klasifikimi	Deri më 31.12.2007 Up to 31.12.2007	2008	2009	2010	2011	2012	2013	2014* Q2	GJITHSEJ TOTAL	(in million EUR)	
										Classification	
I. TE DHËNA KUMULATIVE											
Borxhi Neto	986.15	1,323.35	1,647.37	1,932.15	2,118.16	2,291.23	2,371.61	2,453.90	2,453.90	I. CUMULATIVE DATA (STOCK)	
Tërheqjet	1,409.92	1,753.71	2,097.45	2,558.58	2,764.34	3,031.95	3,211.63	3,343.65	3,343.65	Debt Outstanding Disbursed (DOD)	
Pagesat e Borxhit	384.85	441.95	526.21	808.71	911.29	1,023.83	1,147.45	1,225.65	1,225.65	Drawings	
-Principjal	200.56	235.00	277.13	516.48	570.23	632.40	706.72	768.85	768.85	Debt Service	
-Interes	184.27	207.17	249.08	292.23	341.06	391.43	440.73	456.80	456.80	-Principal	
Borxhi i nënshkruar i patërhequr	533.32	673.28	658.06	717.17	823.84	735.58	795.76	1,166.42	1,166.42	-Interest	
II. TE DHËNA VJETORE											
Tërheqjet	90.45	343.79	343.74	461.13	205.76	267.61	179.68	132.02	2,024.18	Committed Undisbursed Balance (CUB)	
Pagesat e Borxhit	48.48	57.34	84.04	282.50	102.58	112.54	123.62	78.20	889.31	II. ANNUAL DATA (FLOWS)	
-Principjal	32.00	34.44	42.13	239.35	53.75	62.17	74.33	62.13	600.30	Drawings	
-Interes	16.49	22.90	41.91	43.15	48.83	50.37	49.30	16.07	289.01	Debt Service	

*) Deri më 30.06.2014, të dhëna paraprake

*) As of June 30, 2014, data are preliminary

TABELA I.2 - TABLE I.2
BORXHI I JASHTËM I GARANTUAR NGA QEVERIA QËNDRORE
TË DHËNA PËRMBLEDHËSE

CENTRAL GOVERNMENT GUARANTEED DEBT
SUMMARIZED DATA

Klasifikimi	Deri më 31.12.2007 Up to 31.12.2007	2008	2009	2010	2011	2012	2013	2014* Q2	GJITHSEJ TOTAL	(in million EUR)	
										Classification	
I. TE DHËNA KUMULATIVE											
Borxhi Neto	225.01	255.21	291.73	287.34	285.46	270.72	224.01	214.12	214.12	I. CUMULATIVE DATA (STOCK)	
Tërheqjet	281.57	316.97	369.07	380.83	397.08	407.32	412.68	412.68	412.68	Debt Outstanding Disbursed (DOD)	
Pagesat e Borxhit	73.58	92.45	115.41	141.91	169.63	199.20	226.99	241.60	241.60	Drawings	
-Principjal	41.33	52.77	67.81	87.45	108.09	130.57	152.91	164.81	164.81	Debt Service	
-Interes	32.24	39.68	47.60	54.45	61.53	68.63	74.08	76.79	76.79	-Principal	
Borxhi i nënshkruar i patërhequr	133.90	112.31	60.22	48.45	32.21	21.96	16.61	16.61	16.61	-Interest	
II. TE DHËNA VJETORE											
Tërheqjet	34.64	35.40	52.10	11.76	16.25	10.24	5.36	-	165.75	Committed Undisbursed Balance (CUB)	
Pagesat e Borxhit	15.19	18.88	22.96	26.50	27.72	29.58	27.79	14.61	183.22	II. ANNUAL DATA (FLOWS)	
-Principjal	8.67	11.44	15.04	19.65	20.64	22.48	22.34	11.90	132.15	Drawings	
-Interes	6.52	7.44	7.92	6.85	7.08	7.10	5.44	2.71	51.07	Debt Service	

*) Deri më 30.06.2014, të dhëna paraprake

*) As of June 30, 2014, data are preliminary

TABELA II - TABLE II
BORXHI I JASHTËM* I SHQIPËRISË
TËRHEQJET NË VITE NGA KREDITË E HUAJA SIPAS KREDITORËVE
EXTERNAL DEBT* OF ALBANIA
DRAWINGS BY YEARS AND BY CREDITORS

Sipas kreditorëve	(in million EUR)									
	Deri më 31.12.2007 Up to 31.12.2007	2008	2009	2010	2011	2012	2013	2014** Q12	TOTALI	By Creditors
-Shumëpalësh (I)	1,009.94	112.97	136.80	111.20	165.24	220.03	132.49	101.60	1,990.26	-Multilateral (I)
CEB	18.38	15.41	21.83	21.30	25.14	8.68	2.79	-	113.53	CEB
IBRD	3.85	8.08	4.94	2.32	21.10	8.20	5.92	13.31	67.72	IBRD
EC	9.00	-	-	-	-	-	-	-	9.00	EC
EBRD	95.62	24.93	32.24	14.38	36.05	37.88	16.45	13.02	270.57	EBRD
EIB	130.32	31.76	28.19	27.28	29.65	31.52	25.50	5.00	309.22	EIB
IDA	660.07	18.53	25.02	19.61	17.26	21.66	11.38	8.45	781.98	IDA
IDB	39.01	9.45	14.80	13.38	30.19	79.46	58.15	7.37	251.80	IDB
IFAD	30.46	1.51	1.41	2.17	1.22	1.68	2.14	0.59	41.18	IFAD
OPEC	23.22	3.30	8.36	10.76	4.63	30.95	10.16	0.86	92.25	OPEC
FMN	-	-	-	-	-	-	-	53.00	53.00	IMF
-Dypalësh (II)	590.07	36.22	66.44	63.20	56.77	57.82	52.55	30.42	953.48	-Bilateral (II)
AUSTRIA	4.51	-	5.03	2.46	6.35	10.47	8.38	2.78	39.98	AUSTRIA
BULLGARI	0.08	-	-	-	-	-	-	-	0.08	BULGARIA
ÇEKI	8.49	-	-	-	-	-	-	-	8.49	CZECH REP.
GREQI	49.35	-	-	-	-	-	-	-	49.35	GREECE
GJERMANI	125.75	10.74	24.79	15.04	17.79	9.85	13.43	8.50	225.89	GERMANY
HUNGARI	11.92	-	-	-	-	-	-	-	11.92	HUNGARY
ITALI	141.47	17.10	23.24	39.19	29.28	18.12	4.45	0.19	273.05	ITALY
JAPONI	52.71	-	-	2.29	1.32	1.09	0.97	14.75	73.14	JAPAN
JUGOSLLAVI	0.05	-	-	-	-	-	-	-	0.05	YUGOSLAVIA
MAQEDONI	2.39	-	-	-	-	-	-	-	2.39	FYROM
TURQI	26.86	-	-	-	-	-	-	-	26.86	TURKEY
KUVAIT	39.13	3.04	2.46	2.50	0.83	3.46	3.99	0.17	55.57	KUWAIT
KINE	41.09	-	-	-	-	-	-	-	41.09	CHINA
KOREA	21.85	0.21	-	-	-	-	-	-	22.05	SOUTH KOREA
POLONI	0.92	-	-	-	-	-	-	-	0.92	POLAND
RUMANI	4.50	-	-	-	-	-	-	-	4.50	ROMANIA
SPANJE	0.95	0.74	5.02	-	-	-	-	-	6.71	SPAIN
SLOVAKI	4.30	-	-	-	-	-	-	-	4.30	SLOVAKIA
SUEDI	3.14	-	-	-	-	-	-	-	3.14	SWEDEN
NORVEGJI	28.86	-	-	-	-	-	21.32	3.79	53.97	NORWAY
ABU DHABI	-	-	-	-	-	13.64	0.01	0.24	13.89	ABU DHABI
ARABIA SAUDITE	-	-	-	0.80	1.17	-	-	-	1.97	SAUDI ARABIA
HOLLANDE	-	4.40	5.90	1.72	0.40	0.02	-	-	12.43	NETHERLANDS
RUSIA	0.73	-	-	-	-	-	-	-	0.73	RUSSIA
SERBIA	5.93	-	-	-	-	-	-	-	5.93	SERBIA
ZVICRA	4.47	-	-	-	-	-	-	-	4.47	SWITZERLAND
MALI I ZI	0.43	-	-	-	-	-	-	-	0.43	MONTENEGRO
KROACIA	4.47	-	-	-	-	-	-	-	4.47	CROATIA
SLLOVENIA	2.91	-	-	-	-	-	-	-	2.91	SLOVENIA
BOSNJA-HERCEGOVINA	2.82	-	-	-	-	-	-	-	2.82	BOSNIA-HERCEG
Kreditorë Privatë (III)	-	230.00	192.60	298.49	-	-	-	-	721.09	Private Creditors (III)
Kreditorë Privatë	-	230.00	192.60	-	-	-	-	-	422.60	Private Creditors
EUROBONDI	-	-	-	298.49	-	-	-	-	298.49	EUROBOND
-Klubi i Parisit (IV)	91.49	-	-	-	-	-	-	-	91.49	-Paris Club (IV)
AUSTRI	8.85	-	-	-	-	-	-	-	8.85	AUSTRIA
ANGLI	0.02	-	-	-	-	-	-	-	0.02	UNITED KINGDOM
DANIMARKE	0.12	-	-	-	-	-	-	-	0.12	DENMARK
FRANCE	21.85	-	-	-	-	-	-	-	21.85	FRANCE
GJERMANI	13.14	-	-	-	-	-	-	-	13.14	GERMANY
HOLLANDE	1.18	-	-	-	-	-	-	-	1.18	NETHERLANDS
ITALI	7.57	-	-	-	-	-	-	-	7.57	ITALY
JAPONI	0.24	-	-	-	-	-	-	-	0.24	JAPAN
RUSI	38.52	-	-	-	-	-	-	-	38.52	RUSSIA
GJITHSEJ (I+II+III+IV)	1,691.49	379.19	395.83	472.88	222.01	277.85	185.04	132.02	3,756.31	TOTAL (I+II+III+IV)

*) Përfshin borxhin shtetëror dhe shtetëror të garantuar (Tabela II.1 + Tabela II.2)

**) Deri më 30.06.2014, të dhëna paraprake

*) Includes Central Government and Central Government Guaranteed debt

**) As of June 30, 2014, data are preliminary

TABELA II.1 - TABLE II.1

**BORXHI I JASHTËM I QEVERISË QËNDRORE
TËRHEQJET NË VITE NGA KREDITË E HUAJA SIPAS KREDITORËVE**
**CENTRAL GOVERNMENT EXTERNAL DEBT
DRAWINGS BY YEARS AND BY CREDITORS**

(in million EUR)										
Sipas kreditorëve	Deri më 31.12.2007 Up to 31.12.2007	2008	2009	2010	2011	2012	2013	2014* Q2	TOTALI	By Creditors
-Shumëpalësh (I)	899.79	83.58	103.69	105.42	156.12	211.01	127.52	101.60	1,778.73	-Multilateral (I)
CEB	18.38	15.41	21.83	21.30	25.14	8.68	2.79		113.53	CEB
IBRD	3.85	8.08	4.94	2.32	21.10	8.20	5.92	13.31	67.72	IBRD
EC	9.00	-	-	-	-	-	-	-	9.00	EC
EBRD	24.13	10.54	10.14	8.60	26.93	28.86	11.48	13.02	133.70	EBRD
EIB	81.67	16.76	17.19	27.28	29.65	31.52	25.50	5.00	234.57	EIB
IDA	660.07	18.53	25.02	19.61	17.26	21.66	11.38	8.45	781.98	IDA
IDB	39.01	9.45	14.80	13.38	30.19	79.46	58.15	7.37	251.80	IDB
IFAD	30.46	1.51	1.41	2.17	1.22	1.68	2.14	0.59	41.18	IFAD
OPEC	23.22	3.30	8.36	10.76	4.63	30.95	10.16	0.86	92.25	OPEC
FMN	-	-	-	-	-	-	-	53.00	53.00	IMF
-Dypalësh (II)	428.70	30.21	47.45	57.21	49.64	56.60	52.16	30.42	752.37	-Bilateral (II)
AUSTRIA	4.51	-	5.03	2.46	6.55	10.47	8.38	2.78	39.98	AUSTRIA
BULLGARI	0.08	-	-	-	-	-	-	-	0.08	BULGARIA
ÇEKI	8.49	-	-	-	-	-	-	-	8.49	CZECH REP.
GREQI	40.54	-	-	-	-	-	-	-	40.54	GREECE
GJERMANI	78.63	6.08	5.80	9.16	13.14	9.64	13.43	8.50	144.38	GERMANY
HUNGARI	11.92	-	-	-	-	-	-	-	11.92	HUNGARY
ITALI	94.43	15.95	23.24	39.08	26.80	17.11	4.06	0.19	220.87	ITALY
JAPONI	16.15	-	-	2.29	1.32	1.09	0.97	14.75	36.57	JAPAN
JUGOSLLAVI	0.05	-	-	-	-	-	-	-	0.05	YUGOSLAVIA
MAQEDONI	2.39	-	-	-	-	-	-	-	2.39	FYROM
TURQI	26.86	-	-	-	-	-	-	-	26.86	TURKEY
KUVAIT	39.13	3.04	2.46	2.50	0.83	3.46	3.99	0.17	55.57	KUWAIT
KINE	41.09	-	-	-	-	-	-	-	41.09	CHINA
POLONI	0.92	-	-	-	-	-	-	-	0.92	POLAND
RUMANI	4.50	-	-	-	-	-	-	-	4.50	ROMANIA
SPANJE	0.95	0.74	5.02	-	-	-	-	-	6.71	SPAIN
SLOVAKI	4.30	-	-	-	-	-	-	-	4.30	SLOVAKIA
SUEDI	3.14	-	-	-	-	-	-	-	3.14	SWEDEN
NORVEGI	28.86	-	-	-	-	-	-	-	28.86	NORWAY
ABU DHABI	-	-	-	-	0.80	13.64	21.32	3.79	38.75	ABU DHABI FUND
ARABIA SAUDITE	-	-	-	-	0.40	0.02	0.01	0.24	2.22	SAUDI ARABIA
HOLLANDE	-	4.40	5.90	1.72	-	-	-	-	12.43	NETHERLANDS
RUSIA	0.73	-	-	-	-	-	-	-	0.73	RUSSIA
SERBIA	5.93	-	-	-	-	-	-	-	5.93	SERBIA
ZVJERA	4.47	-	-	-	-	-	-	-	4.47	SWITZERLAND
MALIZI	0.43	-	-	-	-	-	-	-	0.43	MONTENEGRO
KROACIA	4.47	-	-	-	-	-	-	-	4.47	CROATIA
SLOVENIA	2.91	-	-	-	-	-	-	-	2.91	SLOVENIA
BOSNIA-HERCEGOVINA	2.82	-	-	-	-	-	-	-	2.82	BOSNIA-HERCEG
Kreditor Privat (III)	-	230.00	192.60	298.49	-	-	-	-	721.09	Private Creditors (III)
Kreditor Privat kredi	-	230.00	192.60	-	-	-	-	-	422.60	Private Creditors Loans
EUROBONDI	-	-	-	298.49	-	-	-	-	298.49	EUROBOND
-Klubi i Parisit (IV)	91.44	-	-	-	-	-	-	-	91.44	-Paris Club (IV)
AUSTRI	8.85	-	-	-	-	-	-	-	8.85	AUSTRIA
ANGLI	0.02	-	-	-	-	-	-	-	0.02	UNITED KINGDOM
DANIMARKE	0.12	-	-	-	-	-	-	-	0.12	DENMARK
FRANCE	21.85	-	-	-	-	-	-	-	21.85	FRANCE
GJERMANI	13.14	-	-	-	-	-	-	-	13.14	GERMANY
HOLLANDE	1.18	-	-	-	-	-	-	-	1.18	NETHERLANDS
ITALI	7.57	-	-	-	-	-	-	-	7.57	ITALY
JAPONI	0.20	-	-	-	-	-	-	-	0.20	JAPAN
RUSI	38.52	-	-	-	-	-	-	-	38.52	RUSSIA
GJITHSEJ (I-II-III-IV)	1,409.92	343.79	343.74	461.12	205.76	267.61	179.68	132.02	3,343.63	TOTAL (I-II-III-IV)

*) Deri më 30.06.2014, të dhëna paraprake

*) As of June 30, 2014, data are preliminary

TABELA II.2 - TABLE II.2

**BORXHI I JASHTËM I GARANTUAR NGA QEVERIA QËNDRORE
TËRHEQJET NË VITE NGA KREDITË E HUAJA SIPAS KREDITORËVE**
**CENTRAL GOVERNMENT GUARANTEED DEBT
DRAWINGS BY YEARS AND BY CREDITORS**

(in million EUR)										
Sipas kreditorëve	Deri më 31.12.2007 Up to 31.12.2007	2008	2009	2010	2011	2012	2013	2014* Q2	GJITHSEJ TOTALI	By Creditors
-Shumëpalësh (I)	120.15	29.39	33.10	5.77	9.12	9.02	4.97	-	211.53	-Multilateral (I)
EBRD	71.50	14.39	22.10	5.77	9.12	9.02	4.97	-	136.88	EBRD
EIB	48.65	15.00	11.00	-	-	-	-	-	74.65	EIB
-Dypalësh (II)	161.37	6.01	18.99	5.99	7.13	1.22	0.39	-	201.11	-Bilateral (II)
GJERMANI	47.12	4.66	18.99	5.88	4.65	0.21	-	-	81.51	GERMANY
GREQI	8.80	-	-	-	-	-	-	-	8.80	GREECE
ITALI	47.04	1.15	-	0.11	2.48	1.01	0.39	-	52.18	ITALY
JAPONI	36.56	-	-	-	-	-	-	-	36.56	JAPAN
KOREA	21.85	0.21	-	-	-	-	-	-	22.05	SOUTH KOREA
-Klubi Parisit (III)	0.05	-	-	-	-	-	-	-	0.05	-Paris Club (III)
JAPONI	0.05	-	-	-	-	-	-	-	0.05	JAPAN
GJITHSEJ (I-II-III)	281.57	35.40	52.10	11.76	16.25	10.24	5.36	-	412.68	TOTAL (I-II-III)

*) Deri më 30.06.2014, të dhëna paraprake

*) As of June 30, 2014, data are preliminary

TABELA III - TABLE III

BORXHI I JASHTËM* I SHQIPËRISË
TËRHEQJET NË VITE SIPAS SEKTORËVE EKONOMIKË

EXTERNAL DEBT* OF ALBANIA
DRAWINGS BY ECONOMIC SECTORS

(million EUR)

(in million EUR)

Sipas sektorëve ekonomikë	Deri më 31.12.2007 Up to 31.12.2007	2008	2009	2010	2011	2012	2013	2014** Q2	GJITHSEJ TOTAL	By Economic Sectors
ADMINISTRATA SHETËTORE	32.88	-	-	-	-	-	4.64	2.78	40.30	Public Administration
ARËSIMI	36.32	9.72	4.13	4.10	5.83	9.12	0.71	(0.39)	69.54	Education
BILANCI I PAGESAVE	18.35	-	-	-	-	-	-	-	18.35	Balance of Payment
BUJQËSI, UJITJE	123.30	10.03	6.28	2.79	0.53	-	-	-	142.93	Agriculture-Irrigation
ENERGJETIKË	300.77	44.80	85.76	39.96	33.08	17.82	19.89	12.57	554.65	Energy
IMPORT MALLRASH DHE PAJISJESH	54.74	-	-	-	-	-	-	-	54.74	Import of Goods and Services
INDUSTRI E LEHTË	2.56	-	-	-	-	-	-	-	2.56	Light Industry
INFRASTRUKTURË URBANE DHE RURALE	48.76	7.21	4.78	1.96	3.28	0.56	6.17	2.99	75.72	Urban and Rural Infrastructure
KLUBI I PARISIT DHE RISKEDULIME TË TJERA	225.01	-	-	-	-	-	-	-	225.01	Paris Club & Other Rescheduling
MBËSHETETJE PËR BUXHETIN	241.93	-	192.60	298.49	18.10	-	-	59.05	810.17	Budgetary Support
MBROJTJA	8.90	-	-	1.83	0.45	1.79	2.27	-	15.24	Defence
MBROJTJA E MJEDISIT	2.52	0.26	0.25	1.02	0.48	1.05	-	-	5.58	Environmental Protection
PYJE	7.22	-	-	-	-	-	-	-	7.22	Forestry
SHËNDETËSI	46.28	2.73	15.46	8.44	10.08	10.75	0.47	-	94.21	Health
SIGURIME SHOQ./TREGU I PUNËS	13.20	2.83	0.17	0.31	0.73	1.80	2.66	-	21.69	Social Safety/Labor Market
STREHIMI	14.07	2.19	5.03	4.10	1.79	0.43	-	-	27.61	Housing
TELEKOMUNIKACION	14.69	-	-	-	-	-	-	-	14.69	Telecommunication
TRANSPORT	266.84	278.46	61.27	71.38	120.52	193.22	129.15	28.79	1,149.63	Transport
TRANSPORTI AJROR	23.64	-	-	-	-	-	-	-	23.64	Air Transport
TRANSPORTI HEKURUDHOR	3.10	-	-	-	-	-	-	-	3.10	Rail Transport
UJËSJELLËSA/KANALIZIME	105.56	13.80	17.71	22.16	21.38	25.48	16.55	25.63	248.27	Water Supply and Sewerage
ZHVILL. SEK.PRIVAT	42.10	5.13	0.00	11.23	1.61	13.79	(0.01)	-	73.86	Enterprise Sector Development
TË TJERA	26.53	-	-	-	-	-	-	-	26.53	Other
ZHVILLIMI RURAL	32.23	2.03	2.41	5.11	4.14	2.03	2.54	0.59	51.08	Rural Development
GJITHSEJ	1,691.49	379.20	395.84	472.90	222.00	277.84	185.04	132.01	3,756.32	TOTAL

*) Përfshin borxhin shtetëror dhe shtetëror të garantuar

**) Deri më 30.06.2014, të dhëna paraprake

*) Includes Central Government and Central Government Guaranteed debt

**) As of June 30, 2014, data are preliminary

TABELA IV - TABLE IV

BORXHI I JASHTËM* I SHQIPËRISË
BORXHI NETO SIPAS KREDITORËVE
EXTERNAL DEBT* OF ALBANIA
DEBT OUTSTANDING DISBURSED BY CREDITORS

(milion EUR)

(in million EUR)

Sipas kreditorëve	2008	2009	2010	2011	2012	2013	2014** Q2	By Creditors
-Shumëpalësh (I)	920.14	1,018.72	1,140.03	1,287.44	1,419.99	1,455.66	1,535.07	-Multilateral (I)
CEB	33.16	54.84	76.17	100.56	108.24	109.30	108.48	CEB
EBRD	77.86	97.94	98.66	117.96	138.09	133.06	135.01	EBRD
EC	9.00	9.00	9.00	9.00	9.00	9.00	9.00	EC
EIB	134.17	155.55	175.49	196.94	218.00	233.70	231.92	EIB
IBRD	11.93	16.88	19.20	39.13	45.12	48.65	60.86	IBRD
IDA	577.31	587.69	636.83	662.67	662.78	632.81	639.85	IDA
IDB	38.63	51.70	66.04	96.84	168.85	213.34	220.61	IDB
IFAD	26.03	26.62	29.68	30.89	31.19	31.22	31.53	IFAD
OPEC	12.05	18.51	28.97	33.45	38.72	44.59	44.53	OPEC
FMN							53.29	IMF
-Dypalësh (II)	357.68	408.85	466.23	506.73	538.69	558.88	581.52	-Bilateral (II)
GJERMANI	116.96	139.27	147.79	158.85	160.88	164.85	166.84	GERMANY
GREQI	12.94	12.69	12.44	12.18	11.93	11.69	11.56	GREECE
AUSTRI		5.03	7.49	13.84	24.31	32.69	35.48	AUSTRIA
ITALI	129.87	147.79	181.66	204.99	219.12	220.40	219.11	ITALY
JAPONI	45.05	41.57	48.98	51.19	43.10	32.27	47.66	JAPAN
KINË	1.32	1.29	1.39	1.44	1.41	1.35	1.36	CHINA
KUVAIT	23.73	23.03	26.75	26.19	26.65	26.91	25.98	KUWAIT
NORVEGI	6.14	4.29	2.78	0.96	-	-	-	NORWAY
HOLLANDË	4.40	9.98	10.60	9.74	8.46	7.16	6.51	NETHERLANDS
SPANJË	1.74	6.46	6.97	7.20	7.06	6.76	6.82	SPAIN
KOREA	15.52	17.44	19.38	19.33	20.67	19.94	20.99	SOUTH KOREA
ABU DHABI					13.15	32.96	37.06	ABU DHABI FUND
ARABIA SAUDITE			-	0.83	1.96	1.90	2.15	SAUDI ARABIA
Kreditorë privatë (III)	230.00	422.60	530.00	530.00	530.00	530.00	507.00	Private Creditors (III)
KREDITORË PRIVATË	230.00	422.60	230.00	230.00	230.00	230.00	207.00	PRIVATE CREDITORS
EUROBONDI			300.00	300.00	300.00	300.00	300.00	EUROBOND
-Borxhi i rriskeuluar (IV) (A+B)	70.75	88.94	83.23	79.45	73.25	51.08	44.43	-Rescheduled Debt (IV) (A+B)
-Klubi i Parisit (A)	27.21	25.60	26.58	26.25	24.39	21.90	21.21	-Paris Club (A)
GJERMANI	0.33	-	-	-	-	-	-	GERMANY
ITALI	2.66	2.49	2.41	2.27	2.07	1.84	1.75	ITALY
RUSI	24.22	23.11	24.17	23.98	22.32	20.05	19.46	RUSSIA
-Të tjerë (B)	43.54	63.34	56.66	53.20	48.87	29.19	23.22	-Others (B)
TURQI	11.65	9.87	9.01	7.61	5.80	3.97	3.20	TURKEY
GREQI		27.70	25.71	22.24	17.54	13.30	11.93	GREECE
KINË	16.41	13.75	12.37	10.22	7.50	4.80	3.63	CHINA
HUNGARI	5.04	3.94	3.19	2.19	2.15	-	-	HUNGARY
GJERMANI	1.47	0.74	-	-	-	-	-	GERMANY
RUMANIA	2.50	2.07	1.82	1.47	1.03	0.59	0.40	ROMANIA
SLLOVAKI	2.16	1.76	1.52	1.18	0.77	0.37	0.37	SLOVAK REP.
MALI I ZI					0.20	-	-	MONTENEGRO
KROACI					3.12	1.00	-	CROATIA
MAQEDONI					1.36	0.43	-	FYROM
ÇEKI	4.31	3.51	3.03	2.35	1.54	0.74	0.74	CZECH REP.
SLOVENIA					1.46	-	-	SLOVENIA
BOSNJA-HERCEGOVINA					1.87	0.90	0.45	BOSNIA-HERCEG
SËRBI			-	5.94	4.53	3.10	2.50	SERBIA
GJITHSEJ (I+II+III+IV)	1,578.57	1,939.11	2,219.49	2,403.62	2,561.94	2,595.62	2,668.02	TOTAL (I+II+III+IV)

*) Përfshin borxhin shtetëror dhe shtetëror të garantuar

**) Deri më 30.06.2014, të dhëna paraprake

*) Includes Central Government and Central Government Guaranteed debt

**) As of June 30, 2014, data are preliminary

TABELA IV.1 - TABLE IV.1

BORXHI I JASHTËM I QEVERISË QËNDRORE
BORXHI NETO SIPAS KREDITORËVE
CENTRAL GOVERNMENT EXTERNAL DEBT
DEBT OUTSTANDING DISBURSED BY CREDITORS

(million EUR)								(in million EUR)	
Sipas kreditorëve	2008	2009	2010	2011	2012	2013	2014* Q2	By Creditors	
-Shumëpalësh (I)	813.64	890.11	1,017.75	1,169.04	1,306.11	1,351.43	1,439.01	-Multilateral (I)	
CEB	33.16	54.84	76.17	100.56	108.24	109.30	108.48	CEB	
EBRD	30.42	37.78	43.22	64.64	85.84	86.54	93.94	EBRD	
EC	9.00	9.00	9.00	9.00	9.00	9.00	9.00	EC	
EIB	75.12	87.10	108.65	131.86	156.37	175.99	176.93	EIB	
IBRD	11.93	16.88	19.20	39.13	45.12	48.65	60.86	IBRD	
IDA	577.31	587.69	636.83	662.67	662.78	632.81	639.85	IDA	
IDB	38.63	51.70	66.04	96.84	168.85	213.34	220.61	IDB	
IFAD	26.03	26.62	29.68	30.89	31.19	31.22	31.53	IFAD	
OPEC	12.05	18.51	28.97	33.45	38.72	44.59	44.53	OPEC	
FMN	-	-	-	-	-	-	53.29	IMF	
-Dypalësh (II)	208.96	245.72	301.17	339.67	381.85	439.09	463.46	-Bilateral (II)	
GERMANI	71.17	76.78	83.39	93.77	100.06	131.15	135.12	GERMANY	
GREQI	4.14	3.89	3.64	3.38	3.13	2.88	2.76	GREECE	
AUSTRI	-	5.03	7.49	13.84	24.31	32.69	35.48	AUSTRIA	
ITALI	83.42	103.14	142.52	164.93	180.30	183.17	182.80	ITALY	
JAPONI	12.89	11.83	15.65	17.40	15.37	12.16	27.42	JAPAN	
KINË	1.32	1.29	1.39	1.44	1.41	1.35	1.36	CHINA	
KUVAIT	23.73	23.03	26.75	26.19	26.65	26.91	25.98	KUWAIT	
NORVEGJI	6.14	4.29	2.78	0.96	-	-	-	NORWAY	
HOLLANDË	4.40	9.98	10.60	9.74	8.46	7.16	6.51	NETHERLANDS	
SPANJA	1.74	6.46	6.97	7.20	7.06	6.76	6.82	SPAIN	
ABU DHABI	-	-	-	-	13.15	32.96	37.06	ABU DHABI FUND	
ARABIA SAUDITE	-	-	-	0.83	1.96	1.90	2.15	SAUDI ARABIA	
Kreditorë Private (III)	230.00	422.60	530.00	530.00	530.00	530.00	507.00	Private Creditors(III)	
KREDITORE PRIVATË	230.00	422.60	230.00	230.00	230.00	230.00	207.00	PRIVATE CREDITORS	
EUROBONDI	-	-	300.00	300.00	300.00	300.00	300.00	EUROBOND	
-Borxhi i riseduluar (IV) (A+B)	70.75	88.94	83.23	79.45	73.26	51.08	44.43	-Rescheduled Debt (IV) (A+B)	
-Klubi i Parisit (A)	27.21	25.60	26.58	26.25	24.39	21.90	21.21	-Paris Club (A)	
GERMANI	0.33	-	-	-	-	-	-	GERMANY	
ITALI	2.66	2.49	2.41	2.27	2.07	1.84	1.75	ITALY	
RUSI	24.22	23.11	24.17	23.98	22.32	20.05	19.46	RUSSIA	
-Te tjere (B)	43.54	63.34	56.66	53.20	48.87	29.19	23.22	-Others (B)	
TURQI	11.65	9.87	9.01	7.61	5.80	3.97	3.20	TURKEY	
GREQI	-	27.70	25.71	22.24	17.54	13.30	11.93	GREECE	
KINË	16.41	13.75	12.37	10.22	7.51	4.80	3.63	CHINA	
HUNGARI	5.04	3.94	3.19	2.19	2.15	-	-	HUNGARY	
GERMANI	1.47	0.74	-	-	-	-	-	GERMANY	
RUMANIA	2.50	2.07	1.82	1.47	1.03	0.59	0.40	ROMANIA	
SLOVAKI	2.16	1.76	1.52	1.18	0.77	0.37	0.37	SLOVAK REP.	
MALI I ZI	-	-	-	-	0.20	-	-	MONTENEGRO	
KROACI	-	-	-	-	3.12	1.00	-	CROATIA	
MAQEDONI	-	-	-	-	1.36	0.43	-	FYROM	
ÇEKI	4.31	3.51	3.03	2.35	1.54	0.74	0.74	CZECH REP.	
SLOVENIA	-	-	-	-	1.46	-	-	SLOVENIA	
BOSNIA-HERCEGOVINA	-	-	-	-	1.87	0.90	0.45	BOSNIA-HERCEG	
SERBIA	-	-	-	5.94	4.53	3.10	2.50	SERBIA	
GJITHSEJ (I-II-III+IV)	1,323.35	1,647.37	1,932.15	2,118.16	2,291.23	2,371.61	2,453.90	TOTAL (I-II-III+IV)	

*) Deri më 30.06.2014, të dhëna paraprake

*) As of June 30, 2014, data are preliminary

TABELA IV.2 - TABLE IV.2

BORXHI I JASHTËM I GARANTUAR NGA QEVERIA QËNDRORE
BORXHI NETO SIPAS KREDITORËVE
CENTRAL GOVERNMENT GUARANTEED DEBT
DEBT OUTSTANDING DISBURSED BY CREDITORS

(million EUR)								(in million EUR)	
Sipas kreditorëve	2008	2009	2010	2011	2012	2013	2014* Q2	By Creditors	
-Shumëpalësh (I)	106.50	128.61	122.28	118.40	113.88	104.22	96.06	-Multilateral (I)	
EBRD	47.44	60.16	55.44	53.32	52.25	46.51	41.07	EBRD	
EIB	59.06	68.45	66.84	65.08	61.63	57.71	54.99	EIB	
-Dypalësh (II)	148.72	163.13	165.06	167.06	156.84	119.79	118.06	-Bilateral (II)	
GERMANI	45.79	62.49	64.40	65.08	60.82	33.70	31.72	GERMANY	
GREQI	8.80	8.80	8.80	8.80	8.80	8.80	8.80	GREECE	
ITALI	46.45	44.65	39.14	40.06	38.82	37.23	36.31	ITALY	
JAPONI	32.15	29.74	33.34	33.79	27.73	20.11	20.24	JAPAN	
KOREA	15.52	17.44	19.38	19.33	20.67	19.94	20.99	SOUTH KOREA	
GJITHSEJ (I+II)	255.22	291.73	287.34	285.46	270.72	224.01	214.12	TOTAL (I+II)	

*) Deri më 30.06.2014, të dhëna paraprake

*) As of June 30, 2014, data are preliminary

TABELA V - TABLE V

BORXHI I JASHTËM* I SHQIPËRISË
BORXHI NETO SIPAS MONEDHAVE

EXTERNAL DEBT* OF ALBANIA
DOD BY CURRENCY

(milion EUR)

(in million EUR)

Monedha Currency	2009		2010		2011		2012		2013		2014** - Q2	
	Amount	%	Amount	%	Amount	%	Amount	%	Amount	%	Amount	%
ACU	51.70	2.67	66.04	2.98	69.63	2.90%	70.72	2.76%	69.99	2.70%	70.99	2.66%
AED							13.15	0.51%	32.963	1.27%	37.06	1.39%
EUR	1,069.99	55.18	1,265.86	57.03	1,390.52	57.85%	1,469.38	57.35%	1,495.44	57.61%	1,486.90	55.73%
JPY	41.56	2.14	48.98	2.21	51.20	2.13%	43.10	1.68%	32.27	1.24%	47.66	1.79%
KWD	23.03	1.19	26.74	1.20	26.19	1.09%	26.65	1.04%	26.91	1.04%	25.98	0.97%
KRW	17.44	0.90	19.38	0.87	19.33	0.80%	20.66	0.81%	19.95	0.77%	20.99	0.79%
SAR					0.83	0.03%	1.96	0.08%	1.90	0.07%	2.15	0.08%
SDR	614.31	31.68	666.51	30.03	693.56	28.85%	693.97	27.09%	664.03	25.58%	724.67	27.16%
USD	121.07	6.24	125.99	5.68	152.36	6.34%	222.37	8.68%	252.18	9.72%	251.62	9.43%
TOTAL	1,939.10	100.00	2,219.49	100.00	2,403.62	100.00%	2,561.96	100.00%	2,595.62	100.00%	2,668.02	100.00%

*) Përfshin borxhin e jashtëm shtetëror dhe shtetëror të garantuar

**) Deri më 30.06.2014, të dhëna paraprake

*) Includes external public and external publicly guaranteed debt

**) As of June 30, 2014, data are preliminary

TABELA VI - TABLE VI

**BORXHI I JASHËM* I SHOQIPËRISË
PJESA E PATËRHEQUR E KREDIVE**
**EXTERNAL DEBT* OF ALBANIA
COMMITTED UNDISBURSED BALANCE**

(in million EUR)								(in million EUR)	
Sipas kreditoreve	2008	2009	2010	2011	2012	2013	2014**Q2	By Creditors	
-Shumëpalësh (I)	431.38	406.41	392.74	467.38	339.24	430.31	809.63	-Multilateral (I)	
CEB	38.85	62.01	40.75	15.62	6.94	4.15	4.15	CEB	
EBRD	75.20	77.95	63.58	77.53	47.14	96.39	83.36	EBRD	
EIB	110.06	81.88	104.60	74.95	46.43	55.93	50.93	EIB	
IBRD	22.97	23.50	21.45	18.33	63.61	87.92	224.11	IBRD	
IDA	122.26	100.27	85.99	67.62	39.94	26.46	17.12	IDA	
IDB	42.98	34.97	54.10	196.72	114.28	151.40	142.25	IDB	
IFAD	4.11	9.02	7.40	6.32	4.58	2.20	1.74	IFAD	
OPEC	14.96	16.82	14.89	10.29	16.32	5.85	5.00	OPEC	
FMN	-	-	-	-	-	-	280.97	IMF	
-Dypalësh (II)	354.21	311.86	372.88	385.67	367.30	382.07	373.40	-Bilateral (II)	
GERMANI	54.96	49.23	125.18	153.39	157.54	147.51	139.00	GERMANY	
GREQI	-	-	-	-	-	-	-	GREECE	
ITALI	181.23	157.98	118.79	89.51	71.38	91.94	91.75	ITALY	
JAPONI	87.55	85.88	100.00	106.90	93.27	72.20	60.66	JAPAN	
KUVAIT	17.47	14.07	13.42	13.06	9.33	5.01	4.56	KUWAIT	
AUSTRI	2.46	2.46	5.96	14.22	3.74	7.67	4.89	AUSTRIA	
ARABIA SAUDITE	-	-	9.00	8.45	7.13	6.82	24.96	SAUDI ARABIA	
HOLLANDE	8.05	2.15	0.43	0.03	0.02	0.02	0.02	NETHERLANDS	
KINA	0.10	0.10	0.11	0.11	0.11	0.10	0.10	CHINA	
SPANJA	4.87	-	-	-	-	-	-	SPAIN	
KOREA	-	-	-	-	-	-	-	SOUTH KOREA	
ABU DHABI	-	-	-	-	24.78	50.80	47.46	ABU DHABI FUND	
GJITHSHEJ (I-II)	785.59	718.28	765.62	853.05	706.54	812.37	1,183.03	TOTAL (I-II)	

*) Përshkrimi besohet identifikues dhe shprehësiv të gjasimit

**) Deri më 30.06.2014, si dhëna paraprake

*) Includes Central Government and Central Government Guaranteed debt

**) As of June 30, 2014, data are preliminary

TABELA VI.1 - TABLE VI.1

**BORXHI I JASHËM I QEVERISË QËNDRORE
PJESA E PATËRHEQUR E KREDIVE**
**CENTRAL GOVERNMENT EXTERNAL DEBT
COMMITTED UNDISBURSED BALANCE**

(in million EUR)								(in million EUR)	
Sipas kreditoreve	2008	2009	2010	2011	2012	2013	2014**Q2	By Creditors	
-Shumëpalësh (I)	364.11	372.24	364.35	448.10	328.99	425.03	804.35	-Multilateral (I)	
CEB	38.85	62.01	40.75	15.62	6.94	4.15	4.15	CEB	
EBRD	18.92	43.79	35.18	58.25	36.89	91.11	78.08	EBRD	
EIB	99.06	81.88	104.60	74.95	46.43	55.93	50.93	EIB	
IBRD	22.97	23.50	21.45	18.33	63.61	87.92	224.11	IBRD	
IDA	122.26	100.27	85.99	67.62	39.94	26.46	17.12	IDA	
IDB	42.98	34.97	54.10	196.72	114.28	151.40	142.25	IDB	
IFAD	4.11	9.02	7.40	6.32	4.58	2.20	1.74	IFAD	
OPEC	14.96	16.82	14.89	10.29	16.32	5.85	5.00	OPEC	
FMN	-	-	-	-	-	-	280.97	IMF	
-Dypalësh (II)	309.17	285.61	352.82	372.74	355.59	370.24	362.07	-Bilateral (II)	
GERMANI	25.14	38.40	120.23	153.09	157.45	147.42	138.91	GERMANY	
GREQI	-	-	-	-	-	-	-	GREECE	
ITALI	166.01	142.76	103.68	76.88	59.76	80.70	80.51	ITALY	
JAPONI	87.55	85.88	100.00	106.90	93.27	72.20	60.66	JAPAN	
KUVAIT	17.47	14.07	13.42	13.06	9.33	5.01	4.56	KUWAIT	
AUSTRI	-	2.46	5.96	14.22	3.74	7.67	4.89	AUSTRIA	
HOLLANDE	8.05	2.15	0.43	0.03	0.02	0.02	0.02	NETHERLANDS	
KINA	0.10	0.10	0.11	0.11	0.11	0.10	0.10	CHINA	
ARABIA SAUDITE	-	-	9.00	8.45	7.13	6.82	24.96	SAUDI ARABIA	
SPANJA	4.87	-	-	-	-	-	-	SPAIN	
ABU DHABI	-	-	-	-	24.78	50.80	47.46	ABU DHABI FUND	
GJITHSHEJ (I-II)	673.28	658.06	717.17	820.84	684.58	795.76	1,166.42	TOTAL (I-II)	

*) Deri më 30.06.2014, si dhëna paraprake

**) As of June 30, 2014, data are preliminary

TABELA VI.2 - TABLE VI.2

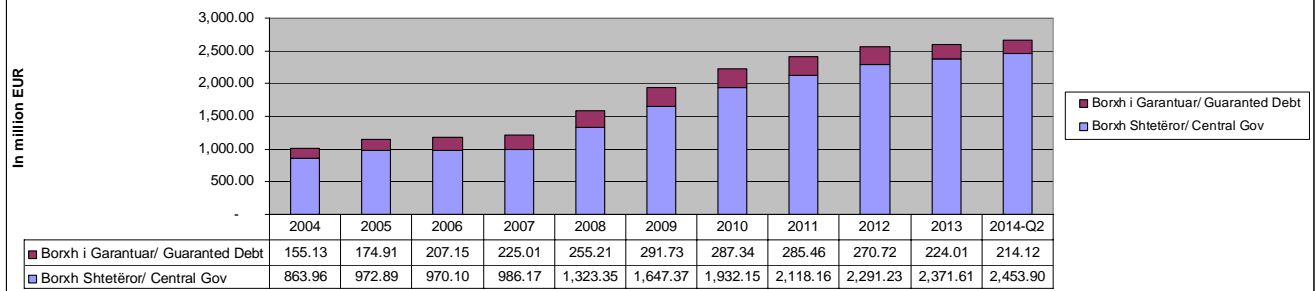
**BORXHI I JASHËM I GARANTUAR NGA QEVERIA QËNDRORE
PJESA E PATËRHEQUR E KREDIVE**
**CENTRAL GOVERNMENT GUARANTEED DEBT
COMMITTED UNDISBURSED BALANCE**

(in million EUR)								(in million EUR)	
Sipas kreditoreve	2008	2009	2010	2011	2012	2013	2014**Q2	By Creditors	
-Shumëpalësh (I)	67.27	34.17	38.40	19.28	10.25	5.28	5.28	-Multilateral (I)	
EBRD	56.27	34.17	38.40	19.28	10.25	5.28	5.28	EBRD	
EIB	11.00	-	-	-	-	-	-	EIB	
-Dypalësh (II)	45.04	26.05	20.05	12.93	11.71	11.33	11.33	-Bilateral (II)	
GERMANI	29.82	10.83	4.95	0.30	0.09	0.09	0.09	GERMANY	
ITALI	15.22	15.22	15.11	12.63	11.62	11.24	11.24	ITALY	
KOREA	-	-	-	-	-	-	-	SOUTH KOREA	
GJITHSHEJ (I-II)	112.31	60.22	48.45	32.21	21.96	16.61	16.61	TOTAL (I-II)	

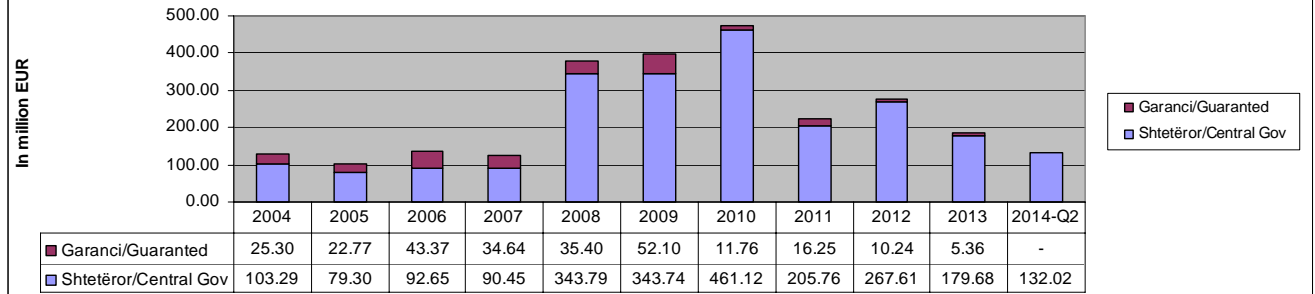
*) Deri më 30.06.2014, si dhëna paraprake

**) As of June 30, 2014, data are preliminary

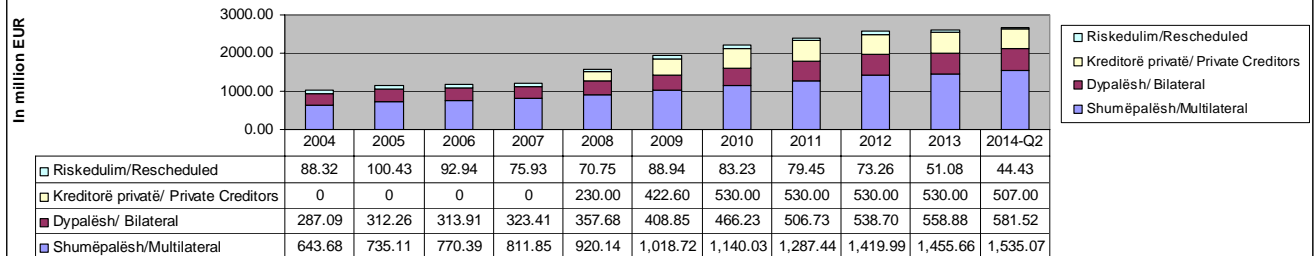
Paraqitja grafike e ecurisë së stokut të borxhit të jashtëm
External Outstanding Debt



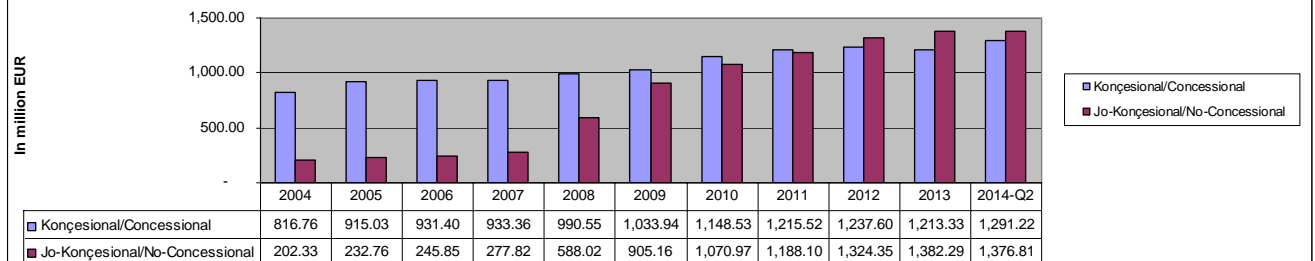
Ecuria e Disbursimeve të Borxhit të Jashtëm
External Debt Drawings



Stoku i borxhit të jashtëm sipas kreditorëve
External Outstanding Debt by Creditors



Stoku i borxhit të jashtëm sipas koncesionalitetit
Debt Outstanding by concessionality



Stoku i borxhit të jashtëm sipas tipit të interesit
Debt Outstanding by interest rate type

